

Bill No. 64
2024

By-law No. S.- ____ - ____

A by-law to assume certain works and services
in the City of London. (Edgevalley Subdivision
Phase 1, Plan 33M-757)

WHEREAS the Deputy City Manager, Environment and Infrastructure of
The Corporation of the City of London has reported that works and services have been
constructed to their satisfaction in Edgevalley Subdivision Phase 1, Plan 33M-757;

AND WHEREAS it is deemed expedient to assume the said works and
services;

NOW THEREFORE the Municipal Council of The Corporation of the City
of London enacts as follows:

1. The Corporation of the City of London assumes the following works and
services, namely:

Edgevalley Subdivision Phase 1, Plan 33M-757
Drewlo Holdings Inc.

Edgevalley Road (Highbury Avenue – Agathos Street);
Drew Street – All;
Dylan Street – All;
Purser Street – All;
Block 131 – All;

2. The warranty period for the works and services in the subdivision referred
to in Section 1 of this by-law will commence for a duration of one calendar year from
January 29, 2024.

3. This by-law comes into force and effect on the day it is passed subject to
the provisions of PART VI.1 of the *Municipal Act*, 2001.

PASSED in Open Council on February 13, 2024 subject to the provisions
of PART VI.1 of the *Municipal Act*, 2001.

Josh Morgan
Mayor

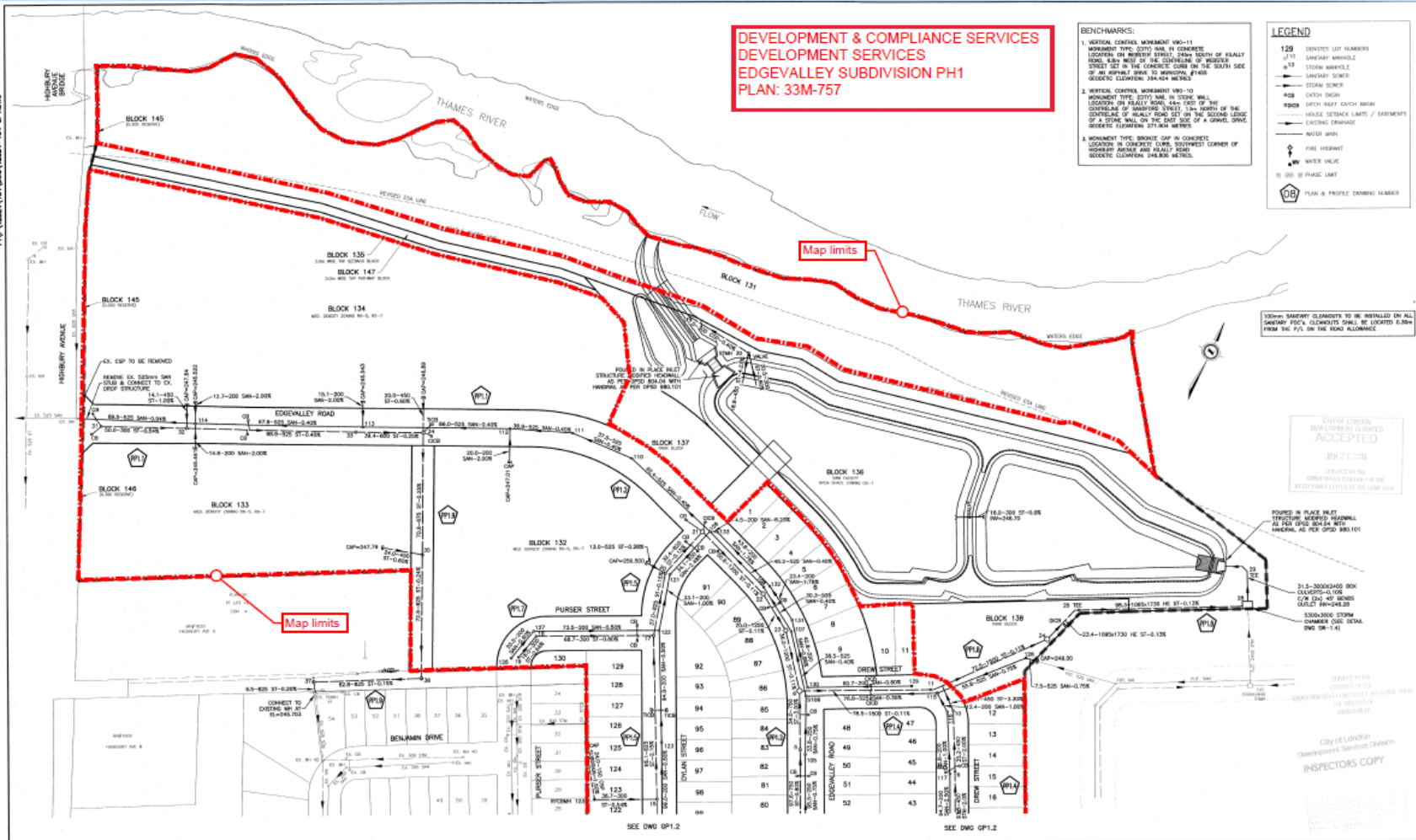
Michael Schulthess
City Clerk

First Reading – February 13, 2024
Second Reading – February 13, 2024
Third Reading – February 13, 2024

**DEVELOPMENT & COMPLIANCE SERVICES
EDGEVALLEY SUBDIVISION PH1
PLAN: 33M-757**

- BENCHMARKS:**
1. VERTICAL CONTROL MONUMENT WMO-11
MONUMENT TYPE: 20770 MM IN CONCRETE
LOCATION: IN WEST ST STREET, 200M SOUTH OF HEALY ROAD, 8.8M W OF THE CENTERLINE OF WEST ST STREET SET IN THE CENTERLINE ON THE SOUTH SIDE OF AN ASPHALT DRIVE TO INDIVIDUAL #145
GEOIDIC ELEVATION: 271.924 Meters
 2. VERTICAL CONTROL MONUMENT WMO-10
MONUMENT TYPE: 20770 MM IN CONCRETE
LOCATION: IN HEALY ROAD, 445M EAST OF THE CENTERLINE OF HARBURY STREET, 12M NORTH OF THE CENTERLINE OF HEALY ROAD SET ON THE SECOND LEDGE OF A STONE WALL ON THE EAST SIDE OF A GRAVEL DRIVE
GEOIDIC ELEVATION: 271.924 Meters
 3. MONUMENT TYPE: BRONZE CAP IN CONCRETE
LOCATION: IN CONCRETE CURB, SOUTHWEST CORNER OF HARBURY AVENUE AND HEALY ROAD
GEOIDIC ELEVATION: 271.924 Meters

- LEGEND**
- 129 DEDUCTS LOT NUMBERS
 - 273 SANITARY MANHOLE
 - 274 STORM MANHOLE
 - SANITARY SERVICE
 - STORM SERVICE
 - CATCH BASIN
 - HOUSE HOLE CATCH BASIN
 - HOUSE SETBACK LIMITS / EASEMENTS
 - EXISTING DRAINAGE
 - ROAD MARK
 - FIRE HYDRANT
 - WATER VALVE
 - 200 M PHASE LIMIT
 - PLAN & PROFILE DRAWING NUMBER



300mm SANITARY CLEANOUTS TO BE INSTALLED ON ALL SANITARY FEEDS. CLEANOUTS SHALL BE LOCATED 0.30m FROM THE P/S ON THE ROAD ALLOWANCE

CITY OF LONDON
DEVELOPMENT SERVICES DIVISION
ACCEPTED
2018-07-20

POURED IN PLACE REINFORCED CONCRETE MANHOLE AS PER SP25 880.101
300mm SANITARY CLEANOUTS TO BE INSTALLED ON ALL SANITARY FEEDS. CLEANOUTS SHALL BE LOCATED 0.30m FROM THE P/S ON THE ROAD ALLOWANCE

City of London
Development Services Division
INSPECTOR'S COPY

EXISTING SERVICES	DRAWING #, SOURCE	DATE	CONSTRUCTED SERVICES	COMPLETION	REVISIONS	NO.	REVISIONS	DATE	CONTRIBUTOR	COMPLETED OR NOT
					ISSUED FOR PERMIT	1	ISSUED FOR PERMIT	2018-07-20	MTE	
					ISSUED FOR PERMIT	2	ISSUED FOR PERMIT	2018-07-20	MTE	
					ISSUED FOR PERMIT	3	ISSUED FOR PERMIT	2018-07-20	MTE	
					ISSUED FOR PERMIT	4	ISSUED FOR PERMIT	2018-07-20	MTE	

MTE
Engineers | Scientists | Surveyors

PROFESSIONAL ENGINEER
S. W. KARIM
2018-07-20

CORPORATION OF THE CITY OF LONDON
London
CANADA

EDGE VALLEY SUBDIVISION
DREWLO HOLDINGS INC.

MASTER PLAN OF SERVICES
(North Section)

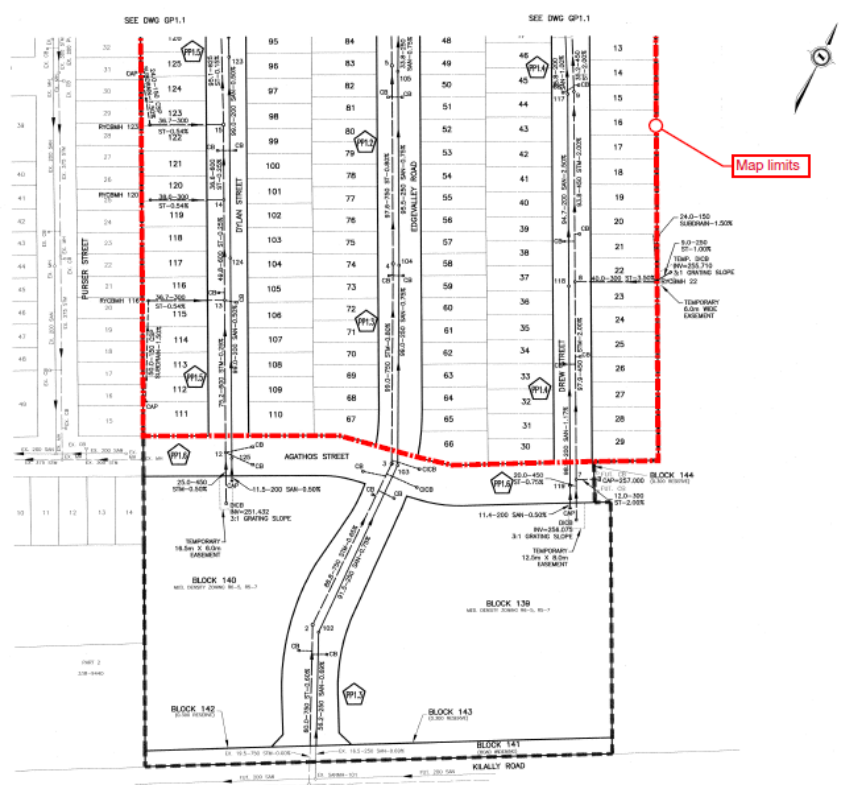
PROJ. NO. 42024-104
SHEET NO. GP1.1

DATE: 2018-07-20

SCALE: 1:1000

City of London
Development Services Division
INSPECTOR'S COPY

P:\P\42254\104\DWG\42254-104 GP1.DWG



LEGEND

- 129 INDICATES LOT NUMBERS
- PTD SANITARY MANHOLE
- STORM MANHOLE
- SANITARY SEWER
- STORM SEWER
- CATCH BASIN
- INLET BULLET CATCH BASIN
- HOUSE SEWER EMITS / EXHAUSTS
- COSTING DRAINAGE
- WATER MAIN
- FIRE HYDRANT
- WATER VALVE
- FRANCHISE
- PLAN & PREPARE DRAWING NUMBER

150mm SANITARY CLEVERETS TO BE INSTALLED ON ALL SANITARY PIPES. CLEVERETS SHALL BE LOCATED 0.30m FROM THE P.V. ON THE TRAIL ALLOWANCE.

- BENCHMARKS:**
- VERTICAL CONTROL MONUMENT 950-11 MONUMENT TYPE: CITY MARK IN CONCRETE. LOCATION ON REAR SIDE OF 124m SOUTH OF KILALLY ROAD. BEARING: 315.000. DISTANCE TO CENTERLINE OF SEWER STREET SET IN THE CONCRETE CURB ON THE SOUTH SIDE OF AN ADJACENT DRIVE TO MONUMENT #400. GEODETIC ELEVATION: 264.424 METRES.
 - VERTICAL CONTROL MONUMENT 960-10 MONUMENT TYPE: CITY MARK IN CONCRETE. LOCATION ON PUBLIC ROAD, WEST SIDE OF THE CENTRELINE OF EDGEMOUNT STREET, 12m NORTH OF THE CENTRELINE OF EDGEMOUNT STREET SET ON THE SECOND LEGGE OF A STEEP WALL ON THE EAST SIDE OF A URMAL DRAIN. GEODETIC ELEVATION: 271.000 METRES.
 - VERTICAL CONTROL MONUMENT 960-11 MONUMENT TYPE: CONCRETE CURB IN CONCRETE. LOCATION IN CONCRETE CURB, SOUTHWEST CORNER OF HOBBY AVENUE AND KILALLY ROAD. GEODETIC ELEVATION: 246.896 METRES.

PROFESSIONAL SEAL AND SIGNATURE
ACCEPTED
 30/10/2010
 PROJECT NO. 42254-104
 DRAWING NO. GP1.2

City of London
 Infrastructure Services Division
 INSPECTOR'S COPY

DRAWING SERVICES	DRAWING #	SOURCE	DATE	CONSTRUCTED SERVICES	COMPLETION	DETAILS	No.	REVISIONS	DATE	CONGLAWNT
						SEWER	200	1	2010 FOR CITY REVIEW	04/04/10
						SEWER	200	2	2010 FOR THE SUBMISSION	04/04/10
						SEWER	200	3	2010 FOR THE SUBMISSION	04/04/10
						SEWER	200	4	2010 FOR THE SUBMISSION	04/04/10



EDGE VALLEY SUBDIVISION
 DREWLO HOLDINGS INC.
MASTER PLAN OF SERVICES
 (SOUTH SECTION)
 City of London
 Infrastructure Services Division

PROJECT NO. 42024-104
 SHEET NO. GP1.2
 PLAN FILE NO.