

Richmond Street Pedestrian Crossing

Richmond Street North of Sunningdale Road



Integrated Transportation and Community Advisory
Committee

January 17, 2024



Agenda

1. Project Background
2. Site Plan
3. Architectural Concept
4. Design Details
5. Traffic Impacts and Management
6. Schedule
7. Questions & Comments

1. Project Background

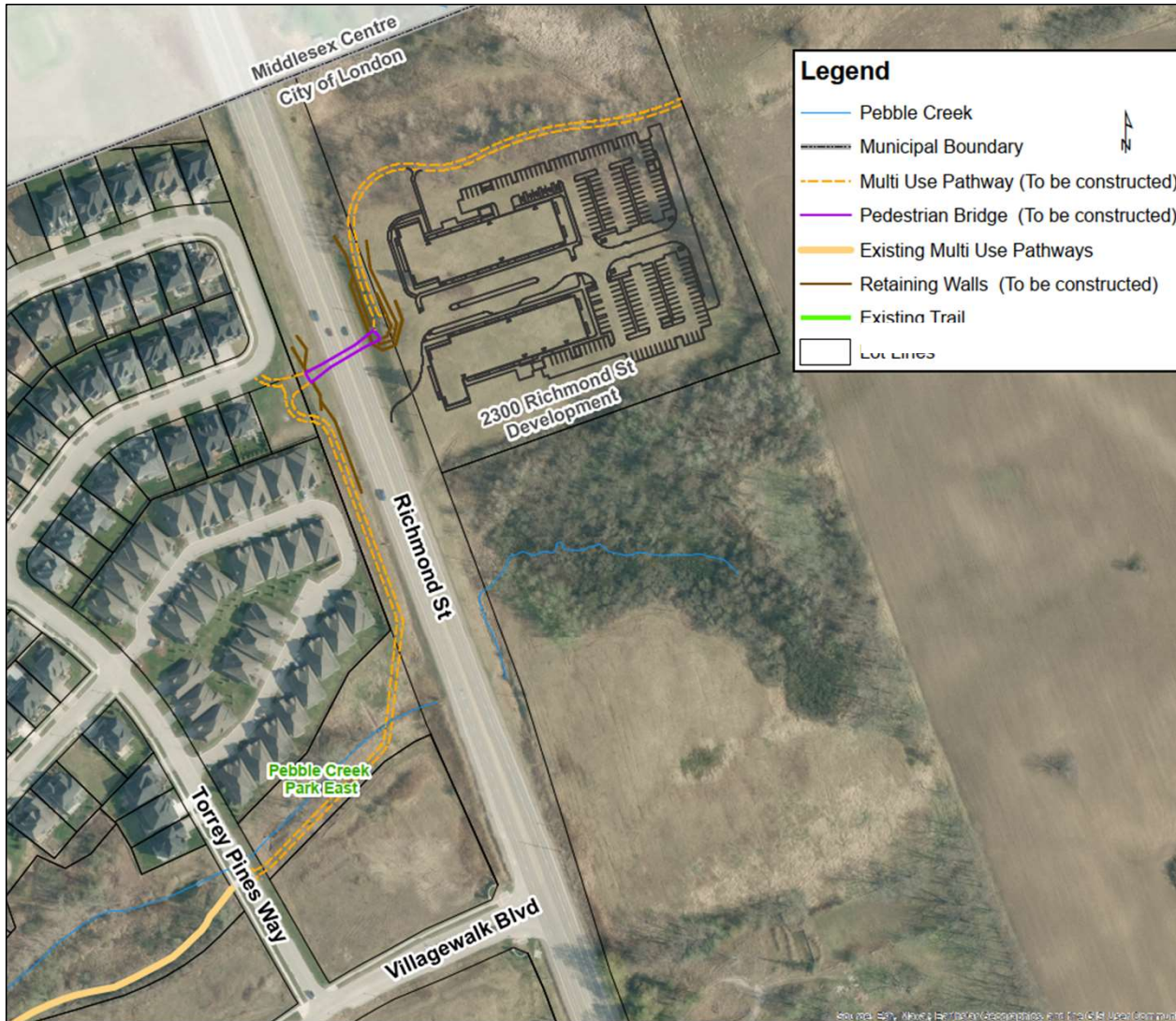


Cycling Master Plan

- Long-term objectives for multi-use pathway connections are outlined in the City's Cycling Master Plan (CMP).
- CMP recommended an east-west recreational pathway corridor along the northern boundary of the City, including a Richmond St. crossing.
- Subdivision development in London, North of Sunningdale Rd., is rapidly progressing to the point where municipal park corridors and large sections of recreational pathways are being implemented.
- Section of path constructed between Sunningdale Rd. to Torrey Pines Way.
- Plan for new bridge crossing over Medway Creek with active transportation underpass.

- Proposed Multi-Use Pathway
- Desired Connection
- Constructed Multi-Use Pathway

1. Project Background



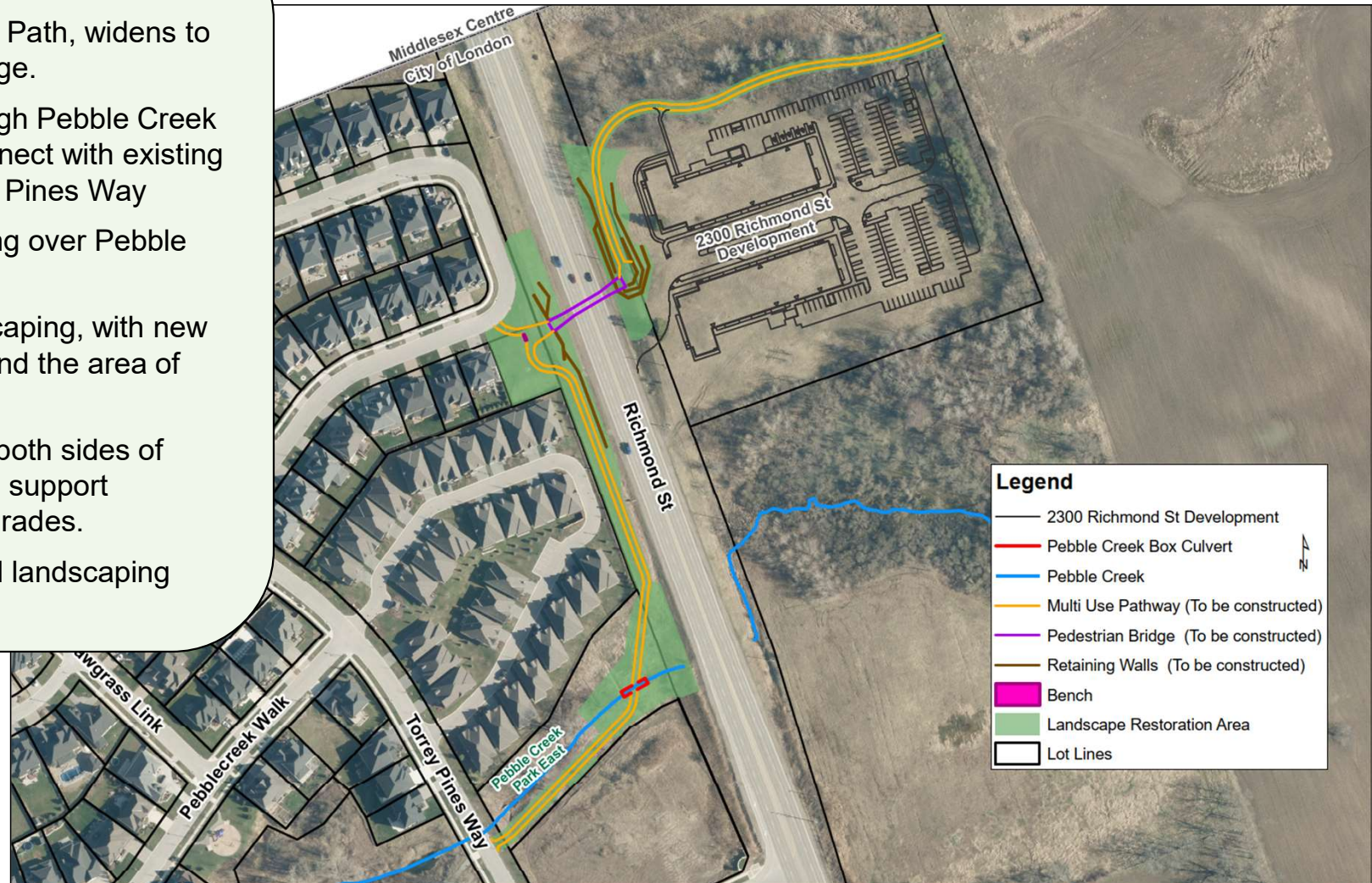
Municipal Class EA

- MECA study completed in 2016 to determine appropriate means of linking recreational pathway east and west of Richmond St., north of Sunningdale R.
- Terminus points of the study included existing pathway connection west of Torrey Pines Way ('A') and the northern City limit east of the Arva Moraine Wetland.
- Multiple pathway alignments and crossing types were considered. The preferred solution was an overpass crossing.
- Recommendations included:
 - Lookout with view of Woodland and Wetland areas
 - Sitting area
 - Curved or cambered girders
 - Themed design concept
 - Wider deck width

2. Site Plan

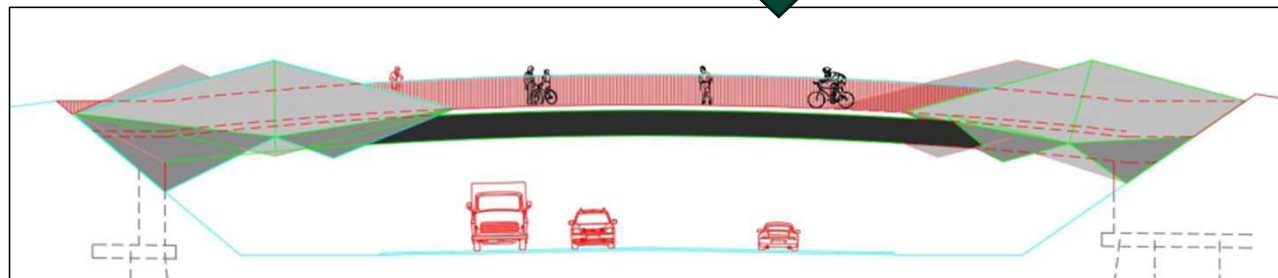
Site Plan

- 3 m wide Multi-Use Path, widens to (min) 3.4 m on bridge.
- Path extends through Pebble Creek Park East, and connect with existing path west of Torrey Pines Way
- New culvert crossing over Pebble Creek.
- Grading and landscaping, with new tree plantings beyond the area of impact.
- Retaining walls on both sides of Richmond Street to support elevated pathway grades.
- Site restoration and landscaping throughout.



3. Architectural Concept

- Multiple architectural concepts were considered.
- **MORaine** concept was selected, which references the Arva Moraine landform and wetland at the northern City limit and extending beyond.
- The concept references materials and influences of the Arva Moraine: the glacial landform provides a natural landing for the bridge, with folded steel side panels 'pushing out' from the hilltops.
- This project represents a linkage of the City's park path network and a northern gateway as defined in the London Plan.



4. Design Details

South Bridge Elevation
(Facing North)

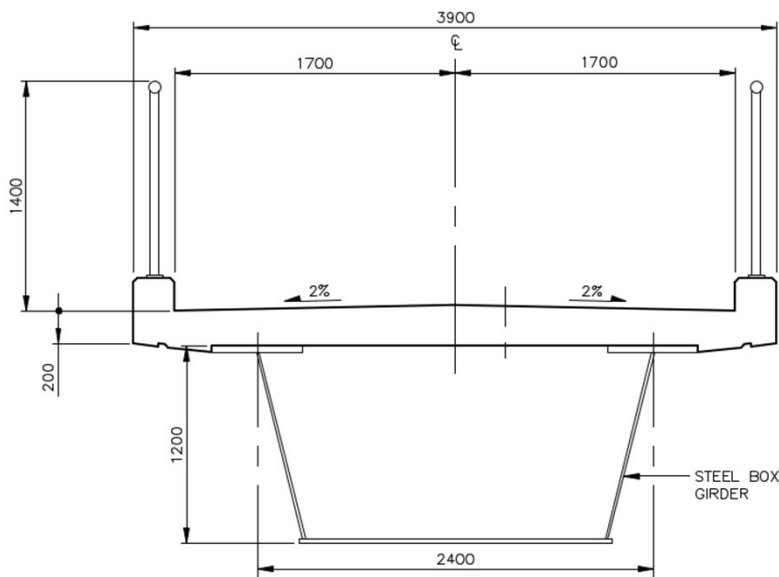
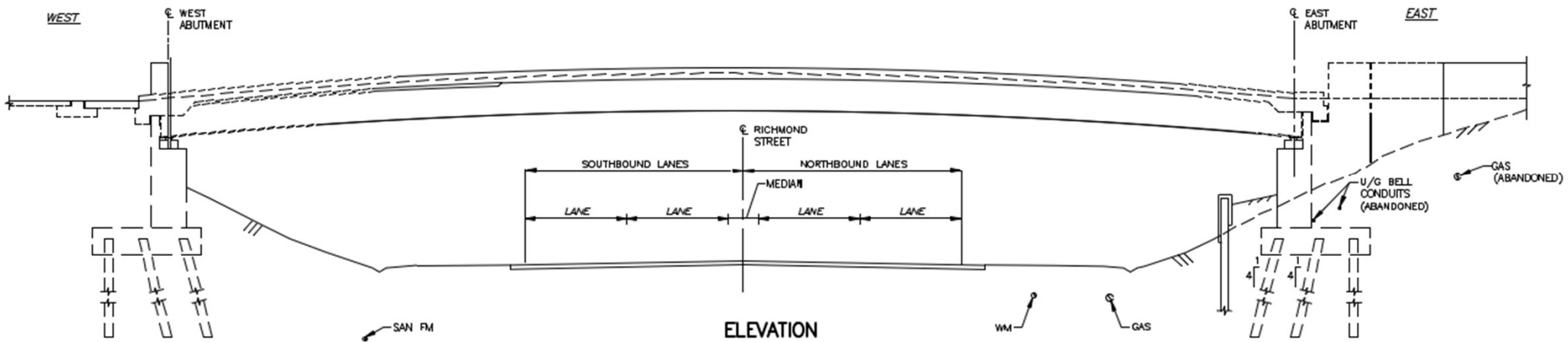


4. Design Details



- North Bridge Elevation (facing South)**
- Folded metal, perforated panels fixed to the sides of the bridge.
 - Architectural railing on curb (1.4 m high overall).
 - Retaining walls with steel (sheet pile) and concrete surfaces.
 - Single steel box girder, consisting of weathering steel material.

4. Design Details



SECTION

Bridge Details:

- 41.0 m clear span.
- Concrete deck and single steel box girder.
- 1.4 m high railing with LED strip lighting to illuminate deck.
- Minimum 3.9 m wide deck, with 3.4 m wide pathway surface. Deck widens at both ends.
- Minimum 5.3 m vertical clearance below bridge deck.
- Design accommodates future sidewalks and cycling facilities.
- Richmond St. cross section is unchanged.

4. Design Details

West Bridge Approach

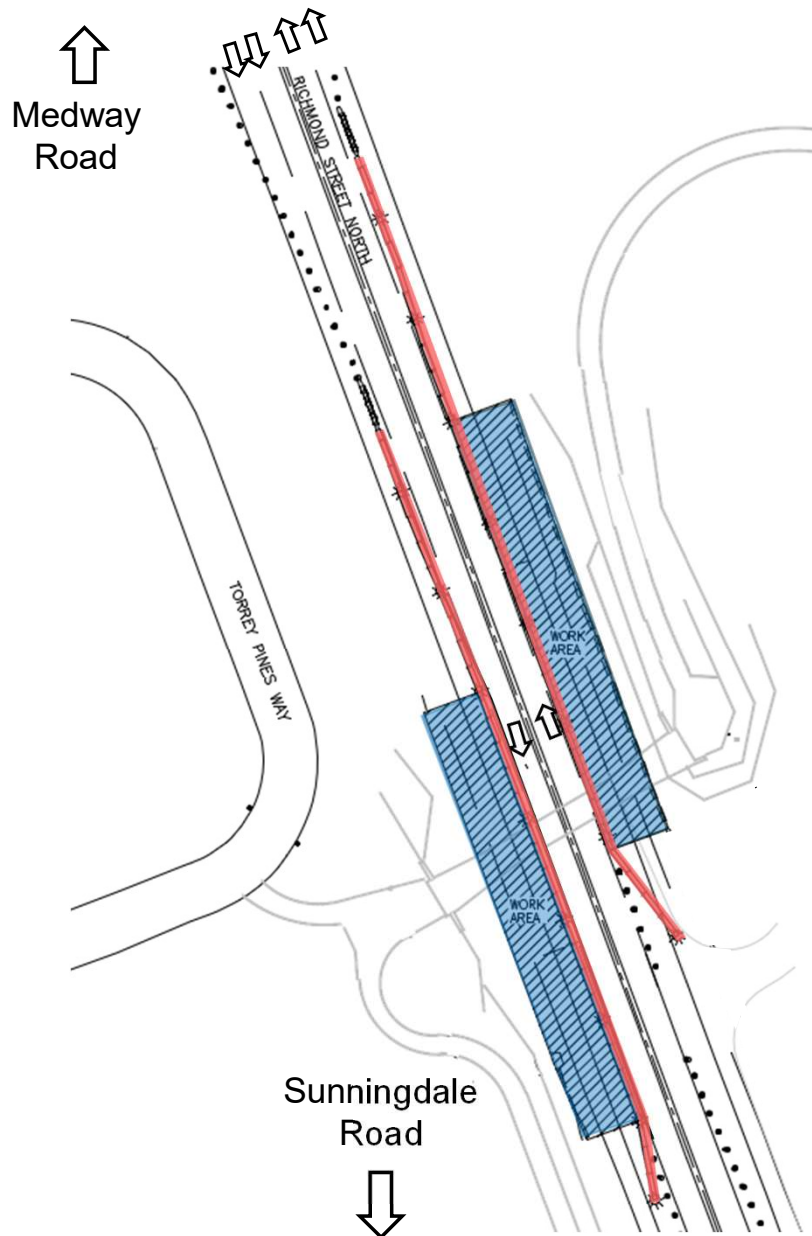
- Landing with bench.
- Parkette with branching multi-use path, connecting to Torrey Pines Way and extending southerly beside Richmond St.
- New trees, shrubs and landscaping with mindfulness for sightlines.
- Pathway lighting to Pebble Creek Park.



East Bridge Approach

- Large elevated landing with lookout to Arva Moraine.
- New section of multi-use path extending east.
- Pedestrian guards with minimum 1.4 m height adjacent the pathway for cyclists, and 1.1 m height elsewhere.

5. Traffic Impacts and Management



Richmond St. Lane Reductions

- Long duration lane reductions on Richmond Street, north of Villagewalk Boulevard to City limits.
- One lane maintained for each northbound and southbound traffic.
- Anticipated 6-month lane reductions.
- Girder installation requires 1 Hour full closure during night hours, with detour route. Timing to be coordinated with any adjacent work.

- Temporary concrete barriers
- Work Area

6. Schedule



Schedule

- 100% Contract Documents – February 2024
- Tendering and Construction timing subject to approved project budget

Note: Richmond St & Sunningdale Rd intersection work anticipated 2024 construction season.

7. Questions & Comments

