

Report to Strategic Priorities and Policy Committee

To: Chair and Members
Strategic Priorities and Policy Committee

From: Kelly Scherr, P.Eng., MBA, FEC
Deputy City Manager, Environment & Infrastructure

Anna Lisa Barbon, CPA, CGA
Deputy City Manager, Finance Supports

Subject: 2024 Water and Wastewater Rates

Date: November 21, 2023

Recommendation

That, on the recommendation of the Deputy City Manager, Environment & Infrastructure and the Deputy City Manager, Finance Supports, the following actions be taken with respect to the 2024 Water and Wastewater rates and charges:

- a) the proposed attached by-law (Appendix “A”) to amend By-law WM-28 being “A by-law for regulation of wastewater and stormwater drainage systems in the City of London” **BE INTRODUCED** at the Municipal Council meeting to be held November 28, 2023 to effect rates and charges increases of 4.0 percent for wastewater and stormwater services effective January 1, 2024; and,
- b) the proposed attached by-law (Appendix “B”) to amend By-law W-8 being “A by-law to provide for the Regulation of Water Supply in the City of London” **BE INTRODUCED** at the Municipal Council meeting to be held November 28, 2023 to effect rates and charges increases of 2.5 percent for water services effective January 1, 2024.

Executive Summary

2023 is the final year of the 2020-2023 Multi-Year Budget process with the new 2024-2027 Multi-Year Budget to be released in December 2023 and approved in March 2024. Consistent with the previous multi-year budget, water and wastewater rate changes are recommended in advance of approval of the 2024-2027 Water and Wastewater Budgets. The rate is approved in advance of the conclusion of the budget process to ensure the revenue related to the rate increase corresponds with the budget’s fiscal year. If Council chooses to make significant changes to the water or wastewater budgets during budget deliberations, the rate would be re-adjusted in spring 2024.

The most recent Water Financial Plan completed in 2020 included 2.5% annual rate increase projections moving forward and this continues to be supported for 2024 based on updated financial projections. For the wastewater rate, which includes wastewater collection and treatment and stormwater management, an increase of 4.0% is recommended for 2024. This is due to higher than anticipated inflation in recent years and projected reserve fund balances.

Linkage to the Corporate Strategic Plan

This recommendation supports the following 2023-2027 Strategic Plan areas of focus:

- Climate Action and Sustainable Growth:
 - The infrastructure gap is managed for all assets
 - London’s infrastructure is built, maintained, and secured to support future growth and protect the environment;

- Well-Run City
 - London’s finances are maintained in a transparent, sustainable, and well-planned manner, incorporating intergenerational equity, affordability and environmental, social, and governance considerations.

1.0 Background Information

1.1 Previous Reports Related to this Matter

October 20, 2020 Strategic Priorities and Policy Committee Report – 2021-2023 Water and Wastewater Rates: <https://pub-london.escribemeetings.com/filestream.ashx?DocumentId=75628>

April 15, 2020 Civic Works Committee Report – Water Service Area Financial Plan Update: <https://pub-london.escribemeetings.com/filestream.ashx?DocumentId=72487>

November 25, 2019 Strategic Priorities and Policy Committee Report – 2020 Water and Wastewater Rates: <https://pub-london.escribemeetings.com/filestream.ashx?DocumentId=68975>

2.0 Discussion and Considerations

2.1 Discussion

London’s rates and forecasts for rates are based on expenditure projections outlined in the upcoming 2024-2027 Multi-Year Budget and the 20-year water and wastewater capital plans. Future rate increases are updated each budget cycle (and reviewed annually during each budget update) and are generally consistent with the approved Water Financial Plan that was updated and submitted to the Ministry of Environment and Climate Change in 2020.

The following tables outline prior year approved rate increases for the 2020-2023 Multi-Year Budget period, along with recommended rate increases for the upcoming 2024-2027 Multi-Year Budget cycle, noting that approval for 2024 rate increases only are the subject of this report. Rate increases for 2025 through 2027 will be brought forward in 2024 pending approval of the 2024-2027 Water and Wastewater Budgets.

Previously Approved Rate Increases

	2020	2021 ¹	2022	2023
Water	2.5%	2.5%	2.5%	2.5%
Wastewater	2.5%	5.2%	2.5%	2.5%

Note 1: The 2021 Wastewater and Treatment rate increase included a 2.5% increase effective January 1, 2021, with an additional 2.7% rate increase effective July 1, 2021 associated with the transfer of a portion of the Conservation Authorities’ costs from the property tax supported budget to the wastewater budget, as approved through the 2020-2023 Multi-Year Budget process.

Recommended Rate Increases

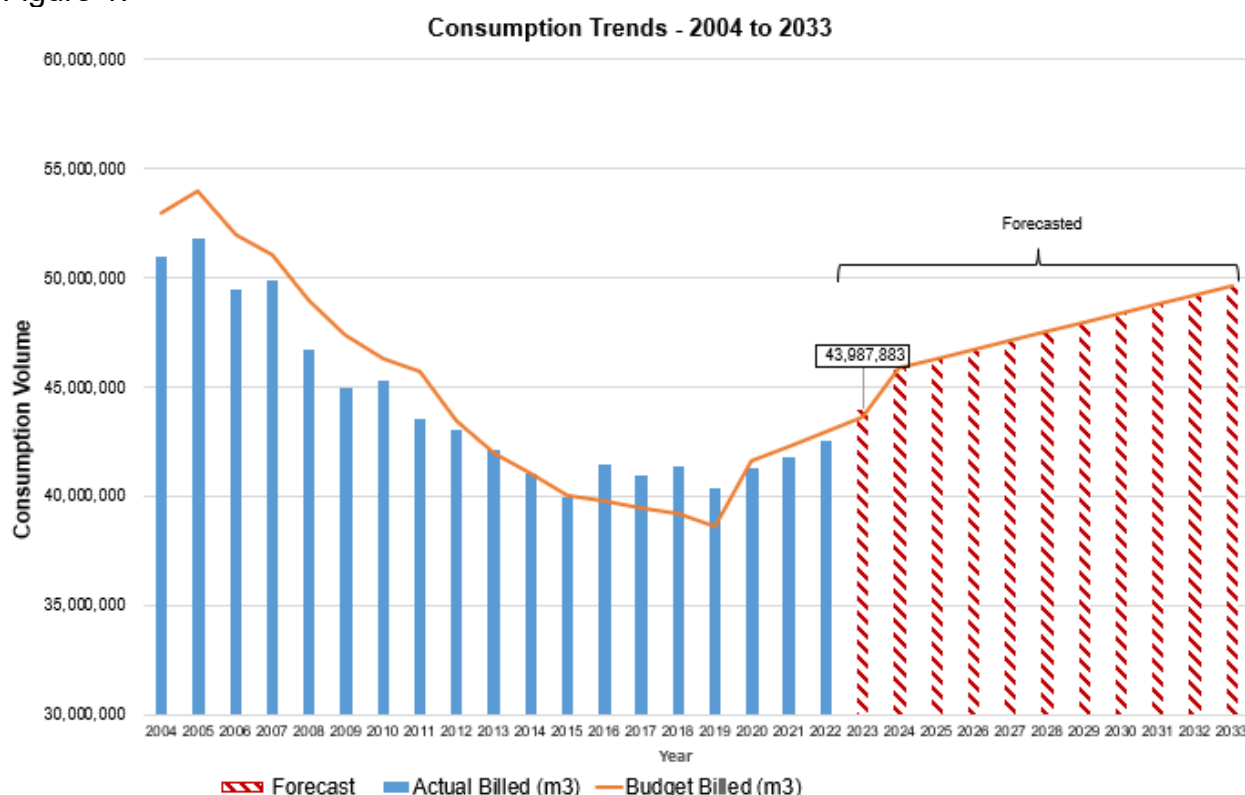
	2024	2025	2026	2027
Water	2.5%	2.5%	2.5%	2.5%
Wastewater	4.0%	4.0%	4.0%	4.0%

The following sections address several of the factors that influence water and wastewater rates.

Water Consumption

Despite the implementation of a new water and wastewater rate structure in March 2013, which shifted a greater proportion of total revenues to fixed charges, revenues continue to be heavily influenced by water consumption volumes. Previously, the trend across Ontario has been an overall decrease in residential water consumption. This was attributed to new construction with more efficient water fixtures, retrofitting of inefficient fixtures, and conservation efforts. However, water consumption for London has been on an upward trend since 2015 due to growth in all sectors. This trend is expected to remain consistent over the next multi-year budget period.

Figure 1:



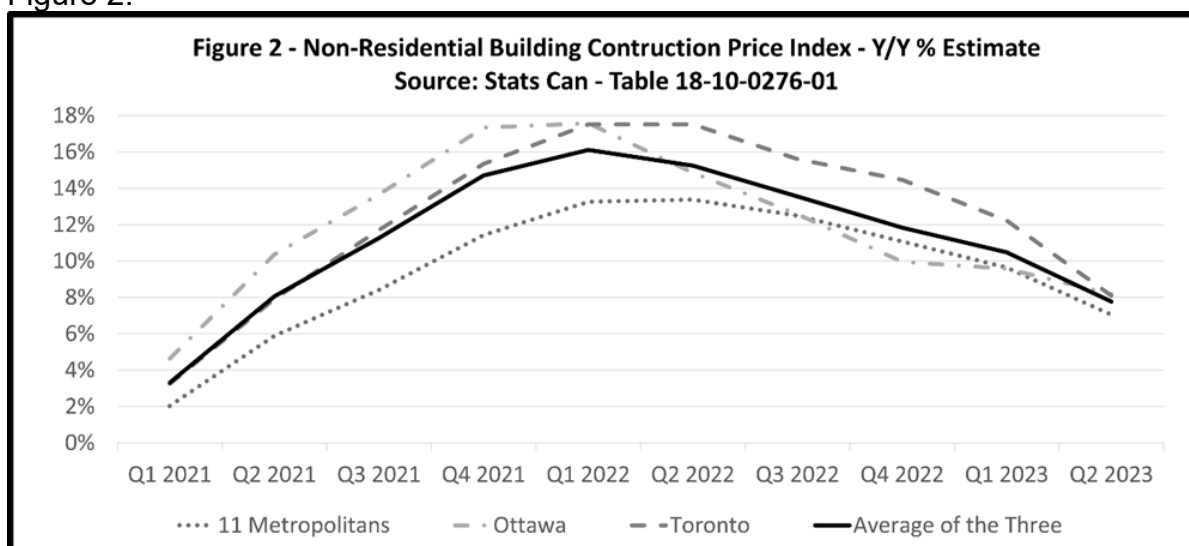
Although water conservation efforts across the City continue to reduce per capita water consumption, the growth in the number of customers appears to have overtaken the impacts of reduced consumption resulting in a net increase in consumption.

Recent Rates of Inflation

As Canada's economy has emerged from the pandemic, inflationary pressures developed in 2021 and 2022 and have persisted through 2023. The Consumer Price Index (CPI) is one of the most watched and reported measures in Canada as it relates to inflation. While not necessarily indicative of the nature of goods and services purchased by a municipality (and specifically the Water and Wastewater & Treatment services), this index represents changes in prices as experienced by Canadian consumers and is a general barometer of inflationary pressures in the economy. The CPI target range for the Bank of Canada continues to be one to three percent. Levels of inflation have fallen from a peak of 8.1% in the summer of 2022 to 3.8% in September 2023, however inflation may be more persistent than originally predicted. The Bank of Canada is forecasting for CPI to increase at an annual average of 3.7% in 2023. In comparison, the average annual increase was 6.8% in 2022, 3.4% in 2021, and 0.7% in 2020.

Given the capital-intensive nature of the Water and Wastewater & Treatment services, construction prices are also informative to illustrate the inflationary pressures facing the utilities. Of particular importance to the City of London is the Non-Residential Building Construction Price Index, which is presented in Figure 2 for the Q1 2021 to Q2 2023 period.

Figure 2:



This graph represents a striking change in the construction environment since the approval of the 2020 to 2023 Multi-Year Budget. Capital projects in the City’s 10-year capital plan did account for inflation; however, the 2.4% factor used during 2020-2023 Multi-Year Budget development has been significantly outpaced. As a result, many projects in the 10-year capital plan for lifecycle renewal, growth, and service improvement do not fully reflect the funding requirements to complete the projects as originally planned. Rates increases for the 2024 to 2027 period will need to reflect the updated costing of the utilities’ capital plans and associated financing requirements.

While inflation may be showing signs of easing (albeit still at elevated levels), it should be noted that long term construction price deflation (i.e. falling construction prices) is very rare and typically only seen during significant economic downturns. Pausing or deferring capital projects in this environment may not reduce our future costs with respect to the City’s capital works and may in fact have detrimental effects on London’s economic recovery. Additionally, deferring a significant number of capital projects would likely cause operational issues as projects stack up in future years, calling into question the ability to execute many deferred projects in a compressed period.

Purchase of Water Costs

The cost of purchasing water from the Lake Huron and Elgin Area Primary Water Supply Systems is a significant component of the Water budget, comprising approximately 30% of the overall total Water budget. The water financial model includes the most up-to-date rate forecasts from the water boards, including the currently approved 5% and 3.5% rate increases for 2024 for the Huron and Elgin systems respectively.

Energy Prices

Although inflation is a significant factor in current and future rate forecasts, price increases in energy commodities – specifically electricity and natural gas – could have a significant impact on future rate forecasts as they are a relatively large component (approximately 10%) of Wastewater operating expenditures (excluding financial expenses) and have historically increased at rates higher than general inflation trends (6-10%). Energy conservation improvements have been made through energy efficiency work at major reservoirs and pumping stations and the installation of the Organic Rankine Cycle engine which recovers waste heat at the Greenway Pollution Control Plant. The energy price variability continues to pose a significant financial risk and will continue to be monitored over the next multi-year budget period.

Infrastructure Gap

The capital needs of the Water and Wastewater & Treatment systems continue to be significant drivers of current and future rate increases. The City of London’s 2023

Corporate Asset Management Plan identified that the value of the City’s water, wastewater, and stormwater systems is \$20.7 billion and represents 73% of the replacement value of the City’s assets. The Corporate Asset Management Plan identified the following infrastructure gaps (as of 2022) related to water, stormwater, and wastewater infrastructure:

	Infrastructure Gap to Maintain Current Levels of Service (\$000’s)	Infrastructure Gap to Achieve Proposed Levels of Service (\$000’s)
Water	None	None
Sanitary	\$57,685	\$58,185
Stormwater	\$9,158	\$11,358

The water, wastewater, and stormwater portion of the City’s overall infrastructure gap to maintain current levels of service is a relatively small proportion at 7% of the City’s total infrastructure gap to maintain current levels of service. A further discussion of the Corporate Asset Management Plan’s recommendations and the implications on the water and wastewater financial plans will be provided in the multi-year water and wastewater budget document.

Maintaining Adequate Reserve Fund Balances

It is critical that water and wastewater reserve fund balances are maintained at sufficient levels to support the renewal and enhancement needs of this significant asset base, smooth out capital budget pressures and provide a funding source for unforeseen expenditures. Maintaining adequate reserve fund balances is also important to ensuring the financial flexibility to manage future strategic investments as well. The target balances for the Water Works Renewal Reserve Fund and Sewage Works Renewal Reserve Fund (which are the two primary capital reserve funds) have been set at an amount equal to one year’s average annual lifecycle renewal capital budget based on the current ten-year capital plan, consistent with the City’s other capital asset renewal and replacement reserve funds. This would represent a target reserve fund balance of at least \$53 million for Water and \$71 million for Wastewater, noting that reserve fund balances fluctuate from year-to-year and these represent long-term targets to work toward over a period of time. These targets, and the progress towards achieving them, will be regularly reviewed alongside the Corporation’s full suite of capital asset renewal and replacement reserve funds.

Water Financial Plan

Ontario Regulation 453/07 *Financial Plans* under the *Safe Drinking Water Act, 2002* mandates the preparation of a Financial Plan as part of the Municipal Drinking Water License program. This regulation was designed by the Ministry of the Environment in response to Justice Dennis O’Connor’s Walkerton Inquiry recommendations. The intent is to ensure that municipalities plan for the long-term financial sustainability of their drinking water systems. The Financial Plan must be updated prior to the renewal of a municipal drinking water license every 5 years. London’s Water Financial Plan was last updated in April 2020. The Financial Plan will be updated to include the outcome of the Multi-Year Budget deliberations and will be brought forward to a future meeting of the Civic Works Committee.

Customer Impact

The impact to the average residential customer of a 2.5% increase in Water rates and 4.0% increase in Wastewater rates is summarized below. Note that the Storm and Sanitary rates are combined as the Wastewater rate.

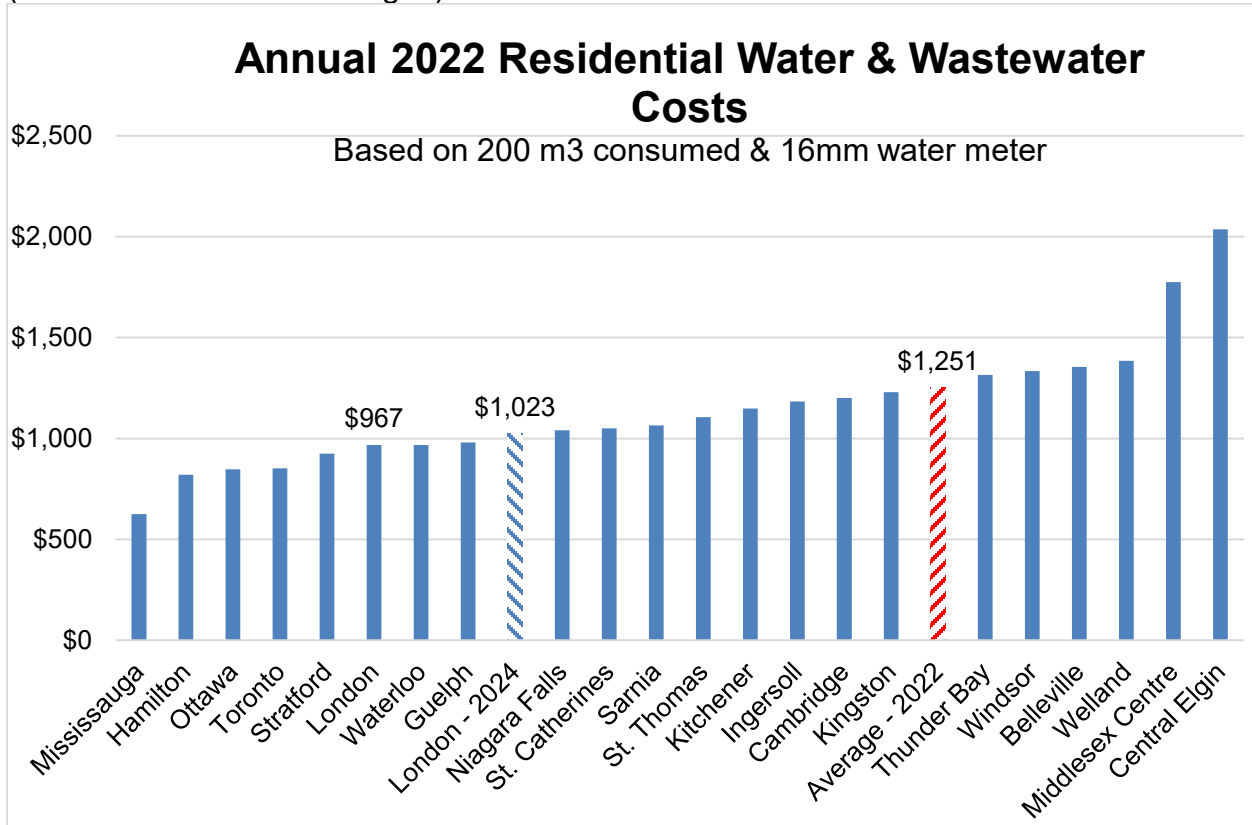
	Budgeted Residential Cost at 2023 Rates ⁽¹⁾	2024 Increase	Forecast Residential Cost at 2024 Rates
Water	\$537	\$13	\$550
Sanitary	\$458	\$18	\$476
Storm	\$221	\$10	\$231
Total	\$1,216	\$41	\$1,257

Subject to rounding

Note 1: The budgeted residential cost is based on an average residential consumption of 200 m³ (2022 BMA Municipal Study).

The following figures show the 2022 annual cost of water and sanitary services in other municipalities which can be compared to the recommended 2024 cost for London inclusive of the impacts of the recommended 2.5% increase in water rates and the 4% increase in wastewater rates. The estimated 2024 cost to the average user based on recommended 2024 rates remains below the average 2022 costs for other comparator municipalities. Note that the following graphs exclude stormwater costs, as some other municipalities recover these costs from property taxes rather than wastewater charges.

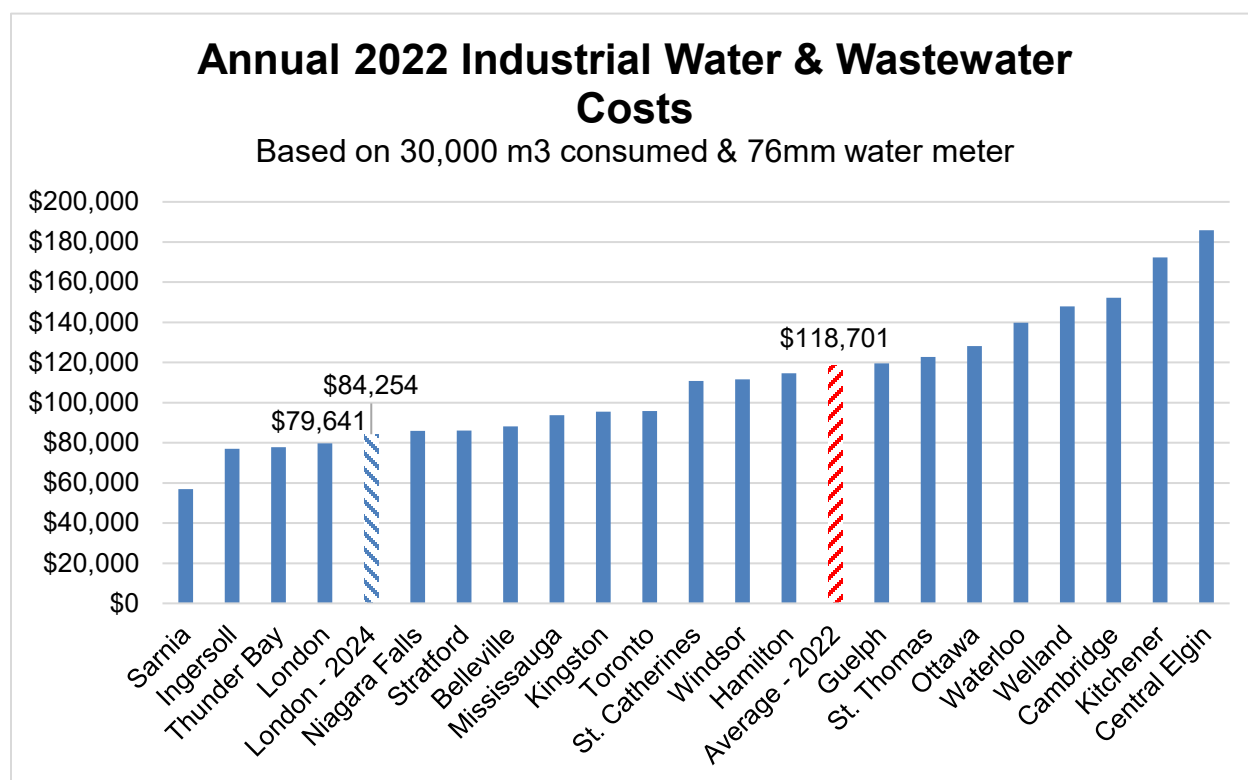
Figure 3: Comparison of Average Annual Residential Water and Wastewater Costs (excludes stormwater charges)



Source: 2022 BMA Study

Note: The “London - 2024” bar reflects the recommended 2024 rate increases of 2.5% and 4% for water and wastewater respectively. It also excludes the customer assistance charge of \$0.25 per month which is factored into the Customer Impact table above, as this charge is not included in other municipalities’ charges.

Figure 4: Comparison of Average Annual Industrial Water and Wastewater Costs (excludes stormwater charges)



Source: 2022 BMA Study

3.0 Next Steps

The 2024-2027 Multi-Year Budget will be released in December 2023 and approved in March 2024. The 2024 water and wastewater rates are approved in advance of the conclusion of the budget process to ensure the revenue related to the rate increase corresponds with the budget’s fiscal year. If Council chooses to make significant changes to the water or wastewater budget during budget deliberations the rate would be re-adjusted in spring 2024.

Rate increases for the remainder of the Multi-Year Budget period (2025 through 2027) will be brought forward in 2024 and will reflect any rate impacts of the decisions made during the budget process.

Conclusion

The recommended 2024 rate increases are the result of a comprehensive re-evaluation of the 20-year water and wastewater plans including the review of servicing strategies and adjusting for recent higher rates of inflation. With the completion of the 2023 Corporate Asset Management Plan, the infrastructure gap remains manageable and is relatively low compared to other corporate asset classes. London’s water and wastewater rates remain extremely competitive with comparable municipalities. The recommended water and wastewater rates provide an excellent value to the citizens of London and a competitive advantage for the City’s industrial, commercial, and institutional customers.

Submitted by:

**Ashley Rammeloo, MMSc., P.Eng.
Director, Water, Wastewater, and Stormwater**

**Kyle Murray, CPA, CA
Director, Financial Planning & Business Support**

Recommended by:

**Kelly Scherr, P. Eng., MBA, FEC
Deputy City Manager, Environment & Infrastructure**

**Anna Lisa Barbon, CPA, CGA
Deputy City Manager, Finance Supports**

Attach:

**Appendix A: Wastewater Rates and Charges Amendment
By-Law**

Appendix B: Water Rates and Charges Amendment By-Law

Appendix A

Bill No.
2023

By-law No. WM-28 - _____

A by-law to amend By-law WM-28 being “A by-law for regulation of wastewater and stormwater drainage systems in the City of London”, as amended, by providing for an increase in the rates and charges.

WHEREAS subsection 5(3) of the *Municipal Act, 2001*, S.O. 2001, c.25, as amended, provides that a municipal power shall be exercised by by-law;

AND WHEREAS section 11 of the *Municipal Act, 2001*, provides for a municipality to pass by-laws respecting matters within the sphere of jurisdiction, including Public Utilities, which includes systems to provide for services relating to sewage, which is defined to include wastewater and stormwater and other drainage from land and commercial wastes and industrial wastes that are disposed of in a sewage (wastewater or stormwater) system;

AND WHEREAS subsection 391(1) of the *Municipal Act, 2001* provides that a municipality may impose fees or charges on persons:

- (a) for services and activities provided or done by or on behalf of it;
- (b) for costs payable by it for services and activities provided or done by or on behalf of any other municipality or local board; and
- (c) for the use of its property including property under its control;

AND WHEREAS it is deemed expedient to pass this by-law;

NOW THEREFORE the Municipal Council of The Corporation of the City of London enacts as follows:

1. That By-law WM-28 being “A by-law for regulation of wastewater and stormwater drainage systems in the City of London”, as amended, be amended by deleting Schedule “A” – Wastewater and Stormwater Charges in its entirety and by replacing it with a new Schedule “A” – Wastewater and Stormwater Charges attached to this by-law as Schedule “A”.
2. This by-law comes into force and effect on January 1, 2024.

PASSED in Open Council on November 28, 2023.

Josh Morgan
Mayor

Michael Schulthess
City Clerk

First Reading – November 28, 2023
Second Reading – November 28, 2023
Third Reading – November 28, 2023

SCHEDULE "A"
WASTEWATER AND STORMWATER CHARGES

This Schedule should be read in conjunction with Wastewater and Stormwater By-law, Drainage By-law and Waste Discharge By-law.

1. Monthly Wastewater Usage Charges

A Wastewater Usage Charge shall be based on the amount of Water consumption on a per cubic metre basis for each respective Water Meter at the rates as indicated in the table below. Where a Customer has an approved Flow Monitor, the monthly Wastewater Usage Charge will be based on that volume. The total monthly Wastewater Usage Charge is the sum of usage in all blocks at the rate for each block.

Range within Block (m³)	Monthly Water Consumption (m³)	January 1, 2024 Rate (\$/m³)
0 - 7	First 7	\$0
8 - 15	Next 8	\$2.3583
16 -25	Next 10	\$3.0321
26 - 35	Next 10	\$3.3690
36 - 250	Next 215	\$1.2799
251 - 7,000	Next 6,750	\$1.2129
7,001 - 50,000	Next 43,000	\$1.1050
50,001+	Over 50,000	\$0.9838

2. Monthly Wastewater Fixed Charges

Wastewater Fixed Charges shall be the infrastructure connection charge based on the Meter or Flow Monitor size as shown in the table below.

Meter Size (mm)	January 1, 2024 Monthly Charge (\$)
16	\$15.78
19	\$23.64
25	\$39.42
40	\$78.82
50	\$126.11
76	\$275.87
100	\$472.89
150	\$1,103.45
200	\$1,891.60
250	\$2,365.19

3. Monthly Stormwater Fixed Charges

Stormwater Fixed Charges shall be the infrastructure connection charge as shown in the table below.

Property Type & Size	January 1, 2024 Storm Drainage Charge
Residential, Land area equal to or below 0.40 hectares without storm sewer within 90m of property	\$14.45 (\$/Month)
Land area equal to or below 0.40 hectares	\$19.22 (\$/Month)
Land area above 0.40 hectares	\$159.99 (\$/hectare/Month)

4. Miscellaneous Rates and Charges

4.1 Frontage Charge

A Frontage Charge shall be levied as shown in the table below.

Type of Sewer Connection	January 1, 2024 Frontage Charge (\$ per metre of calculated frontage)
Sanitary Sewer	\$293.36
Storm Sewer – Residential	\$271.58
Storm Sewer – All Lands, excluding Residential	\$543.19

4.2 Private Drain Connection (PDC) Charges

Services provided by the Engineer – single detached residential, low density residential dwellings	Each PDC (\$)
<u>Repair or replace existing PDC – no construction</u> the repair or replacement of an existing private drain connection	\$5,750.00

4.3 Hauled Liquid Waste Disposal

The Hauled Liquid Waste Disposal charge shall be levied based on the volume of waste at the rate shown in the table below.

Type of Waste	January 1, 2024 Rate (\$ per 1,000 litres)
Hauled Liquid Waste, excluding Leachate	\$16.69
Leachate	\$30.76

4.4 High Strength Sewage Service Charge

The High Strength Sewage Service charge shall be levied based on the volume of Wastewater measured by a Meter or Flow Monitor approved by the Engineer at the rate shown in the table below.

Type of Service	January 1, 2024 Rate (\$ per m³)
High Strength Sewage Service	\$0.774

Appendix B

Bill No.
2023

By-law No. W-8-_____

A by-law to amend By-law W-8 being “A by-law to provide for the Regulation of Water Supply in the City of London”, as amended, by providing for an increase in the rates and charges.

WHEREAS subsection 5(3) of the *Municipal Act, 2001*, S.O .2001, c.25, as amended, provides that a municipal power shall be exercised by by-law;

AND WHEREAS section 11 of the *Municipal Act, 2001*, provides for a municipality to pass by-laws respecting matters within the sphere of jurisdiction, including Public Utilities which incorporates a system that is used to provide water services for the public;

AND WHEREAS subsection 391(1) of the *Municipal Act, 2001* provides that a municipality may impose fees or charges on persons:

- (a) for services and activities provided or done by or on behalf of it;
- (b) for costs payable by it for services and activities provided or done by or on behalf of any other municipality or any local board; and
- (c) for the use of its property including property under its control;

AND WHEREAS it is deemed expedient to pass this by-law;

NOW THEREFORE the Municipal Council of The Corporation of the City of London enacts as follows:

1. That By-law W-8 being “A by-law to provide for the Regulation of Water Supply in the City of London”, as amended, be amended by deleting Schedule “A” – Water Rates and Charges in its entirety and by replacing it with a new Schedule “A” – Water Rates and Charges attached to this by-law as Schedule “A”.
2. This by-law comes into force and effect on January 1, 2024.

PASSED in Open Council on November 28, 2023.

Josh Morgan
Mayor

Michael Schulthess
City Clerk

First Reading – November 28, 2023
Second Reading – November 28, 2023
Third Reading – November 28, 2023

**SCHEDULE “A”
WATER RATES AND CHARGES**

1. Monthly Water Usage Charges - Water rates

The Water consumed on all properties in the City shall be charged on a per cubic metre basis for each respective Meter at the rates as indicated in the table below. The total monthly Water Usage Charge is the sum of usage in all blocks at the rate for each block.

Range within Block (m³)	Monthly Water Consumption (m³)	January 1, 2024 Rate (\$/m³)
0 - 7	First 7	\$0
8 - 15	Next 8	\$2.5464
16 -25	Next 10	\$3.2739
26 - 35	Next 10	\$3.6377
36 - 250	Next 215	\$1.3824
251 - 7,000	Next 6,750	\$1.3095
7,001 - 50,000	Next 43,000	\$1.1933
50,001+	Over 50,000	\$1.0623

2. Monthly Water Fixed Charges

Water monthly fixed charges shall be the sum of infrastructure connection charge, fire protection charge and customer assistance charge (as applicable) as noted in the tables below.

2.1 Infrastructure Connection charge

All Customers shall be charged an infrastructure connection charge based on the Meter size as shown in the table below.

Meter Size (mm)	January 1, 2024 Monthly Charge (\$)
16	\$17.88
19	\$26.81
25	\$44.69
40	\$89.40
50	\$143.03
76	\$312.87
100	\$536.35
150	\$1,251.50
200	\$2,145.41
250	\$2,681.90

2.2 Fire Protection Charge

All Customers shall be charged a fire protection charge as shown in the table below.

Property Classification	January 1, 2024 Monthly Charge (\$)
Residential and Low-density Residential	\$1.83
Institutional, Commercial, Industrial, Medium-density Residential, High Rise under 5.0 hectares	\$12.26
Institutional, Commercial, Industrial, Medium-density Residential, High Rise 5.0 hectares and over	\$61.31

2.3 Customer Assistance Charge

All Residential individually metered Customers shall pay the charges as noted in the table below to provide funding for low income crisis support, low income crisis prevention and the customer assistance program.

Property Classification	Monthly Charge (\$)
Residential	\$0.25

3. Miscellaneous Water Rates and Charges

3.1 Temporary connection charges for construction

Temporary connection charges shall be charged as shown in the table below.

Building Type	January 1, 2024 Charge (\$)
Single Family	\$66.23
Duplex	\$66.23
Up to 4 Units	\$82.75
5 to 10 Units	\$124.05
11 to 15 Units	\$165.45
16 to 20 Units	\$206.88
21 to 25 Units	\$249.06
26 to 30 Units	\$289.52
31 to 35 Units	\$331.06
36 to 40 Units	\$372.43
41 to 50 Units	\$413.75
Over 50 Units	\$8.38 per unit
Other Buildings	\$16.84 per 93 m ² of floor space (min charge \$42.08)

3.2 Main Tap charges

Main Tap charges shall be charged as shown in the table below.

Type of Main Tap	January 1, 2024 Charge (\$)
Tap size 50 mm or less	\$397.31
Tap size greater than 50 mm	\$794.64

Tapping concrete Mains or tap size of greater than 300 mm	\$2,383.91
---	------------

3.3 Miscellaneous Charges

Miscellaneous charges shall be as noted in the table below.

Service or Activity	January 1, 2024 Charge
Change of occupancy/ Account set-up/ Security deposit	As set by London Hydro
Late payment	As set by London Hydro
NSF cheques	As set by London Hydro
Collection charges	As set by London Hydro
Bulk Water User charges Cost of Water per 1,000 litres	\$4.25
Inspecting Waterworks installations/ disconnections	\$147.08 per hour
Disconnection of Water Service During regular hours After regular hours	\$35.88 \$189.63
Arrears Certificate charges (non-payment/arrears)	As set by and payable to London Hydro
Disconnect and Reconnect Meter at customer request 16 and 19 mm 25 mm and larger	\$139.99 \$279.99
Install Water Meter and Remote Read-Out Unit at customer request 16 and 19 mm 25 mm and larger	\$339.43 Time and material
Repair damaged Water Meter 16 and 19 mm 25 mm and larger	\$260.22 Time and Material
Meter checked for accuracy at customer's request and found to be accurate 16 and 19 mm 25 mm and larger	\$299.82 \$446.91
Builder and Developer Frontage Charges: (based on actual frontage which directly abuts City right-of-way) Residential (maximum 50 metres) Commercial, Institutional and Industrial	\$258.65 per metre \$275.11 per metre
Illegal Hydrant Connection	\$848.56/offence + water Consumption
Temporary Hydrant Connection Hydrant connection/disconnection Hydrant occupancy Water consumption	\$436.68 \$45.26/week

Service or Activity	January 1, 2024 Charge
Minimum charge (up to 300 m ³)	\$1,243.82
All additional m ³	\$4.15/m ³
Water Meter Installation Options (by application):	
Radio Device Wired to Outside of House	No Charge
Touch Pad Wired Outside of House	Materials
Meter Pit Installation	Time and Material (\$2,500.00 deposit)
Valve Rod Extensions (by length):	
2 Foot	\$74.64
2 1/2 Foot	\$76.07
3 Foot	\$77.46
3 1/2 Foot	\$78.89
4 Foot	\$80.30
4 1/2 Foot	\$81.74
5 Foot	\$83.15
5 1/2 Foot	\$84.57
6 Foot	\$85.99
6 1/2 Foot	\$87.40
7 Foot	\$88.81
7 1/2 Foot	\$90.23
8 Foot	\$91.67
9 Foot	\$94.48
10 Foot	\$97.32