

Bill No. 276
2018

By-law No. S.-_____

A by-law to lay out, constitute, establish and assume lands in the City of London as public highway (as widening to Westdel Bourne, south of Longwoods Road)

WHEREAS it is expedient to establish the lands hereinafter described as public highway;

NOW THEREFORE the Municipal Council of The Corporation of the City of London enacts as follows:

1. The lands and premises hereinafter described are laid out, constituted, established and assumed as public highway as widening to Westdel Bourne, south of Longwoods Road, namely:

“Part of Lot 2 in the Gore Concession, in the geographic Township of Westminster, now in the City of London and County of Middlesex designated as Part 14 on Reference Plan 33R-19979.”

2. This by-law comes into force and effect on the day it is passed.

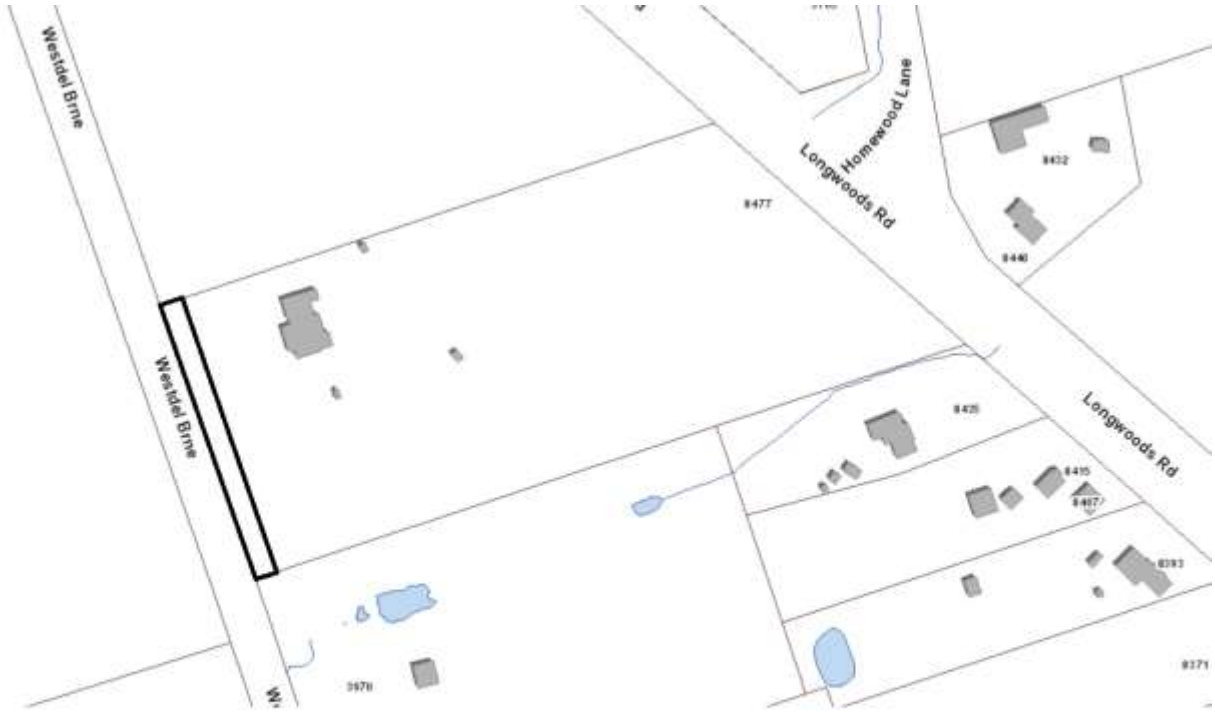
PASSED in Open Council on June 12, 2018.

Matt Brown
Mayor

Catharine Saunders
City Clerk

First Reading – June 12, 2018
Second Reading – June 12, 2018
Third Reading – June 12, 2018

LOCATION MAP



 SUBJECT LANDS