

Western Research Parks



The Work of Transforming our Tomorrow ...

... Continues Today



Fast Facts

- 50 Hectares
- 500 sf Commercial space
- 97% Occupancy in London
- 70 High-tech tenants
- 30 Early stage companies
- 1,100 Knowledge workers
- Estimated \$130 million contribution to regional economy each year



Sample Package

Anchors	Early Stage	Research Centres	Support Network
Lanxess	EVG	Surface Science	Techalliance
Enbridge	EK3	Fraunhofer	IRAP
Nova Chemical	Voices.com	NRC	OCE
Worley Parsons	COTI	WindEEE	WORLDiscoveries
Curocom	Sernova	Cimtec	Unlab
LHSC	BioAmber	Lambton College	SWOAG
	Enable		



Vision

Western's Research Parks are world- renowned destinations where:

talent and technology,
industry and invention,
dreams and discoveries

converge to create extraordinary works for the
benefit of our world and our future.



Mission

To serve as an enabler and catalyst for
invention, economic growth, employment,
wealth-creation and social good in the London
region.



Goals

1. **Generate Economic and Social Value**
2. **Facilitate World-Class RD&C** (Research, Development and Commercialization)
3. **Build the Community Brand**
4. **Align with Western's Research Interests**
5. **Run a Self-Sustaining Operation**



WESTERN RESEARCH PARKS



Discovery Park

Health Sciences
IT
Medical Devices
Imaging
Analytics



Advanced Manufacturing Park

Materials
Wind
Automotion
Power
Environment



Sarnia-Lambton Research Park

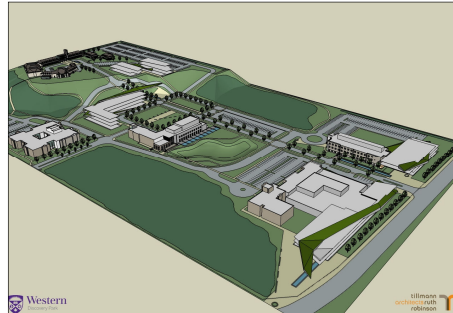
Bio-Industrial
Chemical
Energy
Agriculture

Effectively Links the Region's Research Strengths with Commercial Opportunity

Strategies

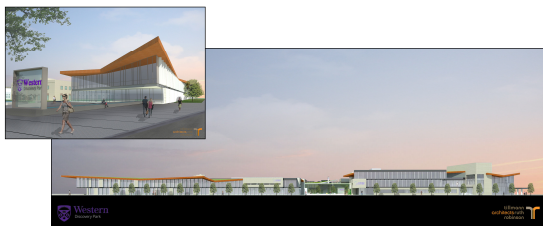
1. **Maintain Anchor/Incubator Balance** (2/3 1/3 ratio)
2. **Continue Sound Business Practices.**
3. **Establish Discovery Park as a leading RD&C Centre in Convergent Sciences.**
4. **Establish AMP as the hub for the next generation of manufacturing in Canada.**
5. **Trumpet our Tenant Successes.**
6. **Ramp Up Our Capacity.**

Discovery Park Plans



Discovery Park Plans

Establish new Western University Hospital Gateway



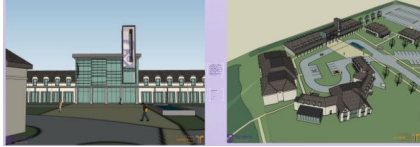
Discovery Park Plans

Expand Stiller Centre and NRC Centre to accommodate Medical Innovation and Commercialization Network



Discovery Park Plans

Convert Windermere Manor into new
International Innovation Village



The International Innovation Village

- emulates the MaRS model,
- provides a distinct focal point for London's growing RD&C capacity,
- serves as an international attraction tool for the world's best and brightest,
- provides a home for student entrepreneurs, start ups and spin-offs, embedded business leaders
- unites the community's capacity and capabilities to grow London's knowledge economy under one roof.

The International Innovation Village

Tech Catalysts

Techalliance, Regional Alliance, BizInc, UnLab, WORLDdiscoveries

Investor Row

Southwest Ontario Angel Group BDC, VC's

Solution Provider Network

Accounting, Legal, Web Services, Emerging Leaders Pillar

Incubator Row Tech Start-Ups

Collaboration Centre

New Media Centre

Business Library

The Price Tag

Facility Expense	(\$Millions)
AMP Centre Expansion	10
Stiller Centre Expansion	33
BioMedical Imaging/Simulation Centre	22
Innovation Village	15
TOTAL	90

The Upside

1. Double RD&C capacity
2. Add 500-750 new knowledge jobs
3. Increase economic output by an additional \$70 million annually
4. Expand our youth employment opportunities
5. Attract new industry through industry scale
6. Amplify international reputation



Timetable

1. Aggressive application for fund support in September 2013
2. Favourable announcements in Spring 2014
3. Construction to begin Fall 2014
4. Project completion by Spring 2017



Western  Research Parks

