

Bill No. 350
2023

By-law No. S.- ____ - ____

A by-law to assume certain works and services
in the City of London. (Westfield Village
Estates, Phase 1 – Stage 2, Plan 33M-621)

WHEREAS the Deputy City Manager, Environment & Infrastructure of The Corporation of the City of London has reported that works and services have been constructed to their satisfaction in Westfield Village Estates Subdivision Phase 1 – Stage 2, Plan 33M-621;

AND WHEREAS it is deemed expedient to assume the said works and services;

NOW THEREFORE the Municipal Council of The Corporation of the City of London enacts as follows:

1. The Corporation of the City of London assumes the following works and services, namely:

Westfield Village Estates Subdivision Phase 1 – Stage 2, Plan 33M-621
York Developments

Tillman Road - All

2. The warranty period for the works and services in the subdivision referred to in Section 1 of this by-law will commence for a duration of one calendar year from September 5, 2023.

3. This by-law comes into force and effect on the day it is passed subject to the provisions of PART VI.1 of the *Municipal Act, 2001*.

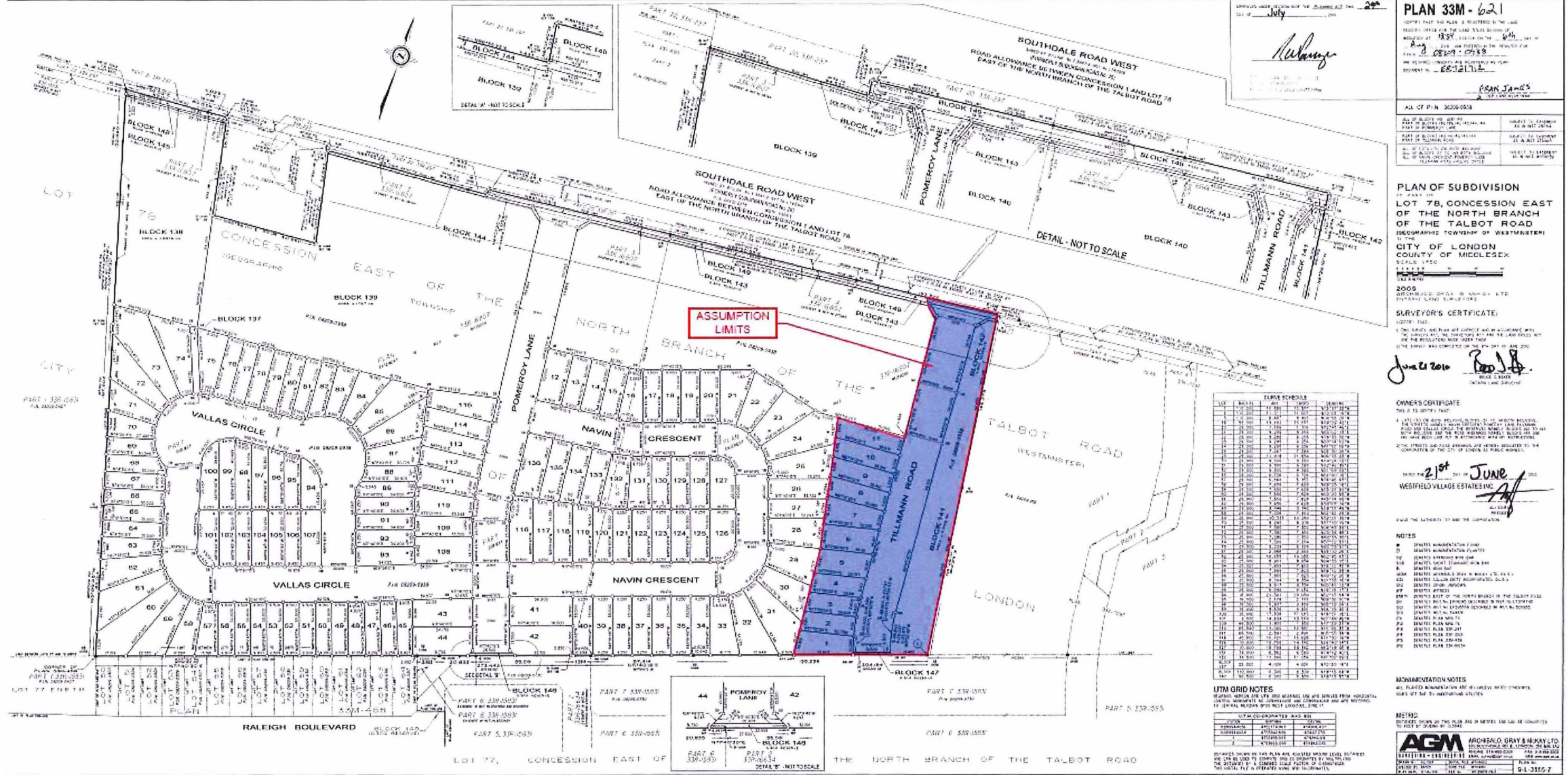
PASSED in Open Council on September 26, 2023 subject to the provisions of PART VI.1 of the *Municipal Act, 2001*.

Josh Morgan
Mayor

Michael Schulthess
City Clerk

First Reading – September 26, 2023
Second Reading – September 26, 2023
Third Reading – September 26, 2023

Assumption Limits



PLAN 33M-621
 IAN JAMES
 SURVEYOR

ALL OF PLAN 30209-003	APPLY TO EXEMPT
ALL OF BLOCK 140	APPLY TO EXEMPT
PART 1 OF BLOCK 140	APPLY TO EXEMPT
PART 2 OF BLOCK 140	APPLY TO EXEMPT
PART 3 OF BLOCK 140	APPLY TO EXEMPT
PART 4 OF BLOCK 140	APPLY TO EXEMPT
PART 5 OF BLOCK 140	APPLY TO EXEMPT
PART 6 OF BLOCK 140	APPLY TO EXEMPT
PART 7 OF BLOCK 140	APPLY TO EXEMPT
PART 8 OF BLOCK 140	APPLY TO EXEMPT

PLAN OF SUBDIVISION
 OF PART 78
 LOT 78, CONCESSION EAST
 OF THE NORTH BRANCH
 OF THE TALBOT ROAD
 (FORMERLY TOWNSHIP OF WESTMINSTER)
 IN THE
 CITY OF LONDON
 COUNTY OF MIDDLESEX
 T.C.M.S. 1752

SURVEYOR'S CERTIFICATE
 I, IAN JAMES, SURVEYOR, DO HEREBY CERTIFY THAT THE SURVEY AND PLAN ARE CORRECT AND ACCORDANT WITH THE SURVEY ACT, 1881, AND THE SURVEY ACT, 1924, AND THAT THE SURVEY WAS COMPLETED ON THE 21st DAY OF JUNE 2006.

June 21st 2006 *Ian James*
 IAN JAMES
 SURVEYOR

OWNER'S CERTIFICATE
 I, WESTFIELD VILLAGE ESTATES INC, DO HEREBY CERTIFY THAT THE SURVEY AND PLAN ARE CORRECT AND ACCORDANT WITH THE SURVEY ACT, 1881, AND THE SURVEY ACT, 1924, AND THAT THE SURVEY WAS COMPLETED ON THE 21st DAY OF JUNE 2006.

June 21st 2006 *Westfield Village Estates Inc*
 WESTFIELD VILLAGE ESTATES INC
 OWNER

- NOTES**
1. THE SURVEY AND PLAN ARE CORRECT AND ACCORDANT WITH THE SURVEY ACT, 1881, AND THE SURVEY ACT, 1924, AND THAT THE SURVEY WAS COMPLETED ON THE 21st DAY OF JUNE 2006.
 2. THE SURVEY AND PLAN ARE CORRECT AND ACCORDANT WITH THE SURVEY ACT, 1881, AND THE SURVEY ACT, 1924, AND THAT THE SURVEY WAS COMPLETED ON THE 21st DAY OF JUNE 2006.
 3. THE SURVEY AND PLAN ARE CORRECT AND ACCORDANT WITH THE SURVEY ACT, 1881, AND THE SURVEY ACT, 1924, AND THAT THE SURVEY WAS COMPLETED ON THE 21st DAY OF JUNE 2006.
 4. THE SURVEY AND PLAN ARE CORRECT AND ACCORDANT WITH THE SURVEY ACT, 1881, AND THE SURVEY ACT, 1924, AND THAT THE SURVEY WAS COMPLETED ON THE 21st DAY OF JUNE 2006.
 5. THE SURVEY AND PLAN ARE CORRECT AND ACCORDANT WITH THE SURVEY ACT, 1881, AND THE SURVEY ACT, 1924, AND THAT THE SURVEY WAS COMPLETED ON THE 21st DAY OF JUNE 2006.
 6. THE SURVEY AND PLAN ARE CORRECT AND ACCORDANT WITH THE SURVEY ACT, 1881, AND THE SURVEY ACT, 1924, AND THAT THE SURVEY WAS COMPLETED ON THE 21st DAY OF JUNE 2006.
 7. THE SURVEY AND PLAN ARE CORRECT AND ACCORDANT WITH THE SURVEY ACT, 1881, AND THE SURVEY ACT, 1924, AND THAT THE SURVEY WAS COMPLETED ON THE 21st DAY OF JUNE 2006.
 8. THE SURVEY AND PLAN ARE CORRECT AND ACCORDANT WITH THE SURVEY ACT, 1881, AND THE SURVEY ACT, 1924, AND THAT THE SURVEY WAS COMPLETED ON THE 21st DAY OF JUNE 2006.
 9. THE SURVEY AND PLAN ARE CORRECT AND ACCORDANT WITH THE SURVEY ACT, 1881, AND THE SURVEY ACT, 1924, AND THAT THE SURVEY WAS COMPLETED ON THE 21st DAY OF JUNE 2006.
 10. THE SURVEY AND PLAN ARE CORRECT AND ACCORDANT WITH THE SURVEY ACT, 1881, AND THE SURVEY ACT, 1924, AND THAT THE SURVEY WAS COMPLETED ON THE 21st DAY OF JUNE 2006.

UTM GRID NOTES

UTM COORDINATES AND ELEVATION

UTM	Easting	Northing	Elevation
44	42	53	55
44	42	54	55
44	42	55	55
44	42	56	55
44	42	57	55
44	42	58	55
44	42	59	55
44	42	60	55
44	42	61	55
44	42	62	55
44	42	63	55
44	42	64	55
44	42	65	55
44	42	66	55
44	42	67	55
44	42	68	55
44	42	69	55
44	42	70	55
44	42	71	55
44	42	72	55
44	42	73	55
44	42	74	55
44	42	75	55
44	42	76	55
44	42	77	55
44	42	78	55
44	42	79	55
44	42	80	55
44	42	81	55
44	42	82	55
44	42	83	55
44	42	84	55
44	42	85	55
44	42	86	55
44	42	87	55
44	42	88	55
44	42	89	55
44	42	90	55
44	42	91	55
44	42	92	55
44	42	93	55
44	42	94	55
44	42	95	55
44	42	96	55
44	42	97	55
44	42	98	55
44	42	99	55
44	42	100	55

MONUMENTATION NOTES

ALL PLATED MONUMENTATION HAS BEEN CHECKED AND FOUND TO BE CORRECT AND ACCORDANT WITH THE SURVEY AND PLAN.

METRIC

ALL DIMENSIONS ON THIS PLAN ARE IN METRES AND SHALL BE CONSIDERED TO BE IN METRES UNLESS OTHERWISE STATED.

AGM ARCHON/O. GRAY & HUNAY LTD
 SURVEYORS
 211 RIVER STREET, LONDON, W1R 2EJ
 TEL: 020 7493 8100
 FAX: 020 7493 8101
 EMAIL: info@agm.co.uk