

Bill No. 345
2023

By-law No. C.P.-1512()-___

A by-law to amend The Official Plan for the City of London, 2016 relating to 1918 to 2304 and 2005 to 2331 Kilally Road (excluding 2065 Kilally Road)

The Municipal Council of The Corporation of the City of London enacts as follows:

1. Amendment No. ___ to The Official Plan for the City of London Planning Area – 2016, as contained in the text attached hereto and forming part of this by-law, is adopted.
2. This Amendment shall come into effect in accordance with subsection 17(27) or 17(27.1) of the *Planning Act*, R.S.O. 1990, c.P.13.

PASSED in Open Council on September 26, 2023, subject to the provisions of PART VI.1 of the *Municipal Act*, 2001.

Josh Morgan
Mayor

Michael Schulthess
City Clerk

First Reading – September 26, 2023
Second Reading – September 26, 2023
Third Reading – September 26, 2023

AMENDMENT NO.
to the
OFFICIAL PLAN FOR THE CITY OF LONDON

A. PURPOSE OF THIS AMENDMENT

The purpose of this Amendment is:

1. To change the Place Type of 1918 to 2304 and 2005 to 2331 Kilally Road (excluding 2065 Kilally Road) described herein from Neighbourhood and Environmental Review to Green Space and from Environmental Review to Neighbourhood to align with the limits of the Kilally South, East Basin Environmentally Significant Area on Schedule "A", Map 1 – Place Type, to The Official Plan for the City of London.
2. To change the Place Type of certain lands described herein from Neighbourhood to Environmental Review on Schedule "A", Map 1 – Place Type, to The Official Plan for the City of London.
3. To change the designation from Potential Environmentally Significant Area to Environmentally Significant Area on Map 5 - Natural Heritage.
4. To add unevaluated wetlands and unevaluated vegetation patches on Map 5 - Natural Heritage.

B. LOCATION OF THIS AMENDMENT

1. This Amendment applies to 1918 to 2304 and 2005 to 2331 Kilally Road, excluding 2065 Kilally Road, in the City of London.

C. BASIS OF THE AMENDMENT

Based on more detailed information that has been made available through the completion of the Kilally South, East Basin Environmental Impact Study, the final land use designations and Natural Heritage features can now be accurately confirmed in the Official Plan.

D. THE AMENDMENT

The Official Plan for the City of London is hereby amended as follows:

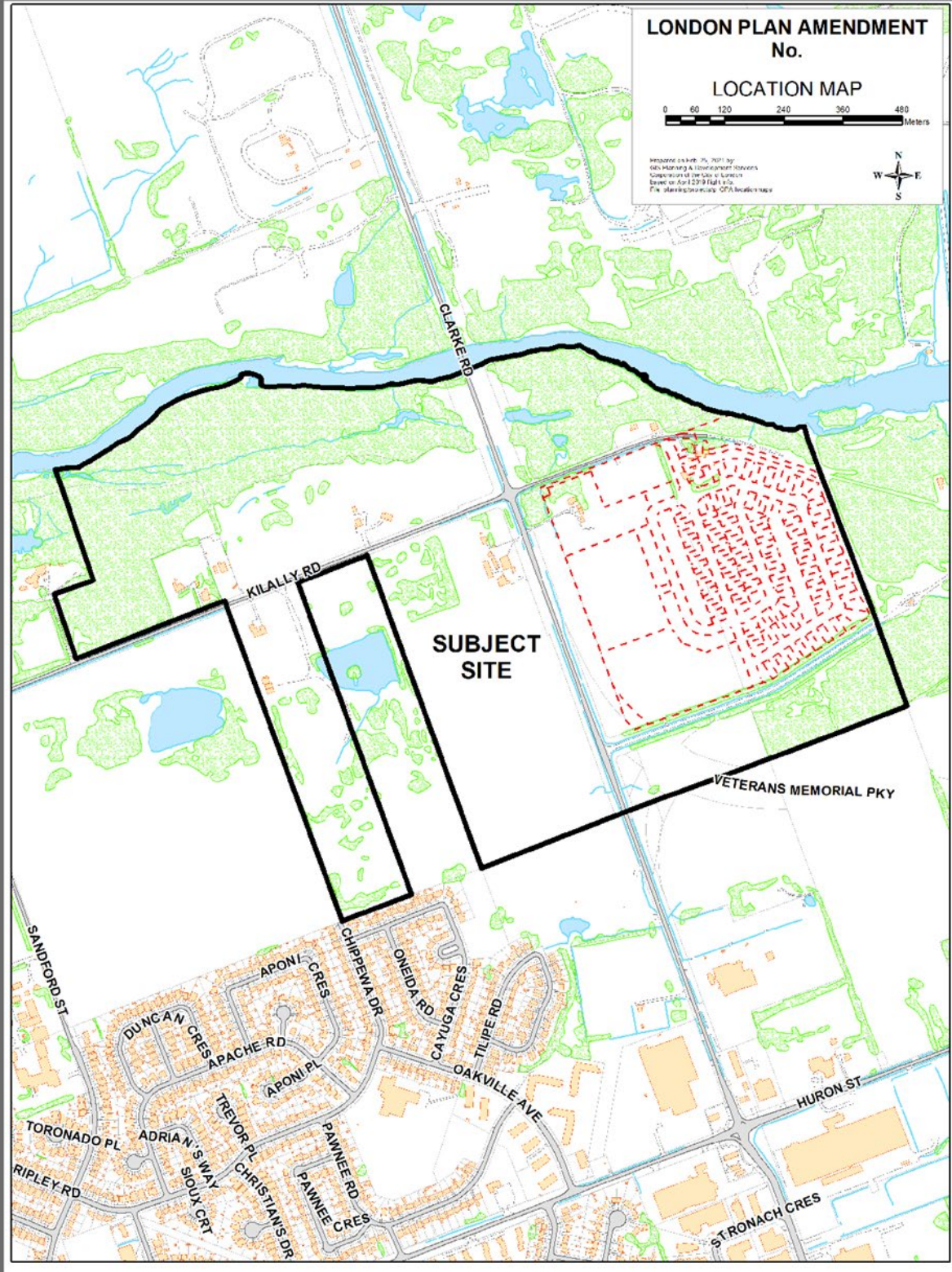
1. Map 1 - Place Types, to The Official Plan for the City of London Planning Area is amended by designating those lands located within the Kilally South, East Basin Environmentally Significant Area in the City of London, as indicated on "Schedule 1" attached hereto from Neighbourhoods and Environmental Review to Green Space and from Environmental Review to Neighbourhoods.
2. Map 1- Place Types, to The Official Plan for the City of London Planning Area is amended by changing Neighbourhood to Environmental Review as indicated on "Schedule 1" attached hereto.
3. Map 5 - Natural Heritage, to The Official Plan for the City of London Planning Area is amended by designating those lands located within the Kilally South, East Basin Environmentally Significant Area the City of London, as indicated on "Schedule "2" attached hereto to change the designation Potential Environmentally Significant Area and Unevaluated Vegetation Patch to Environmentally Significant Area.
4. Map 5 - Natural Heritage, to The Official Plan for the City of London Planning Area is amended by adding Unevaluated Vegetation Patches and Unevaluated Wetlands as indicated on "Schedule "2" attached hereto.

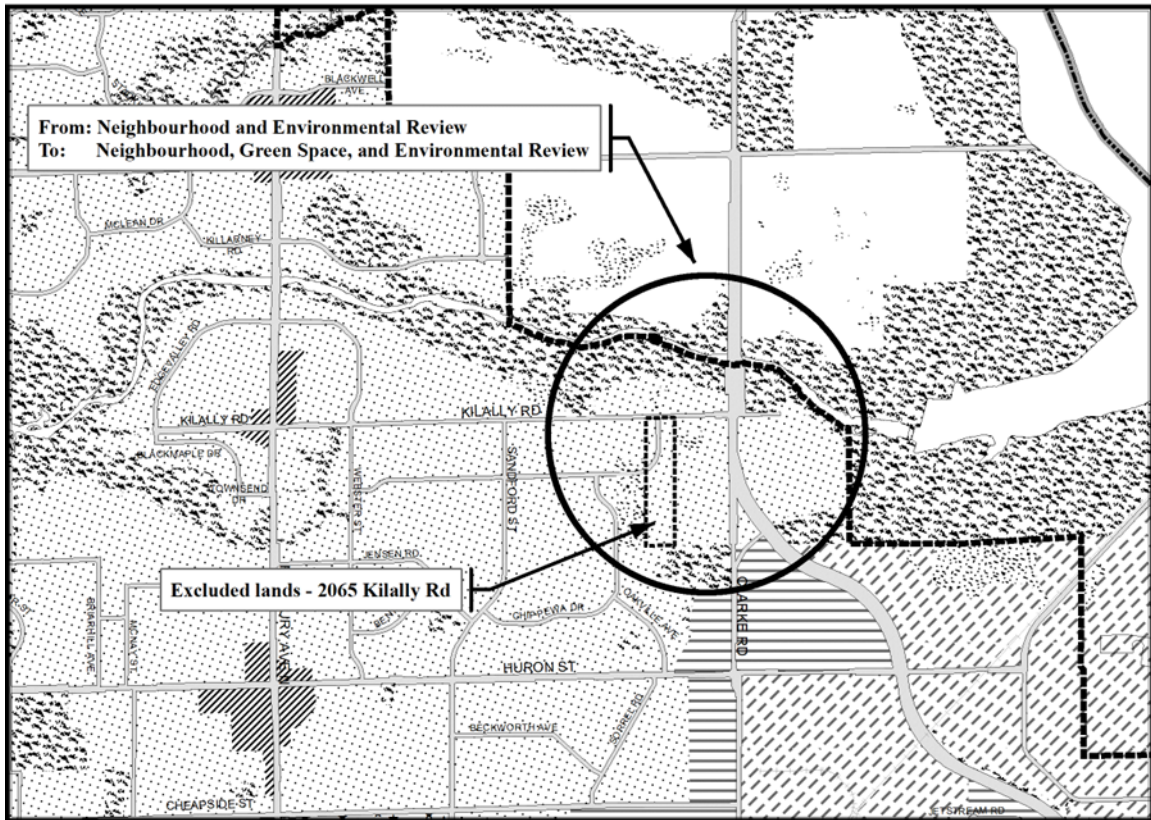
LONDON PLAN AMENDMENT
No.

LOCATION MAP



Prepared by: City of London
City Planning & Development Services
Competition of the City of London
Project No. 2019-01-001
File: 2019-01-001-CPA-LocationMap





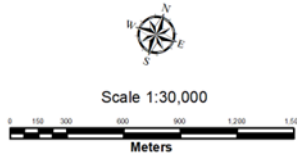
Legend

- | | | |
|------------------------|--------------------------|---|
| Downtown | Future Community Growth | Environmental Review |
| Transit Village | Heavy Industrial | Farmland |
| Shopping Area | Light Industrial | Rural Neighbourhood |
| Rapid Transit Corridor | Future Industrial Growth | Waste Management Resource Recovery Area |
| Urban Corridor | Commercial Industrial | Urban Growth Boundary |
| Main Street | Institutional | |
| Neighbourhood | Green Space | |

*This is an excerpt from the Planning Division's working consolidation of Map 1 - Place Types of the London Plan, with added notations.
 At the time of the printing of this map, the Rapid Transit EA is in progress. This map shows the Rapid Transit Corridors and Urban Corridors to recognize potential alignments. These Place Types will be modified to align with the results of the EA process for the final version of The London Plan.*

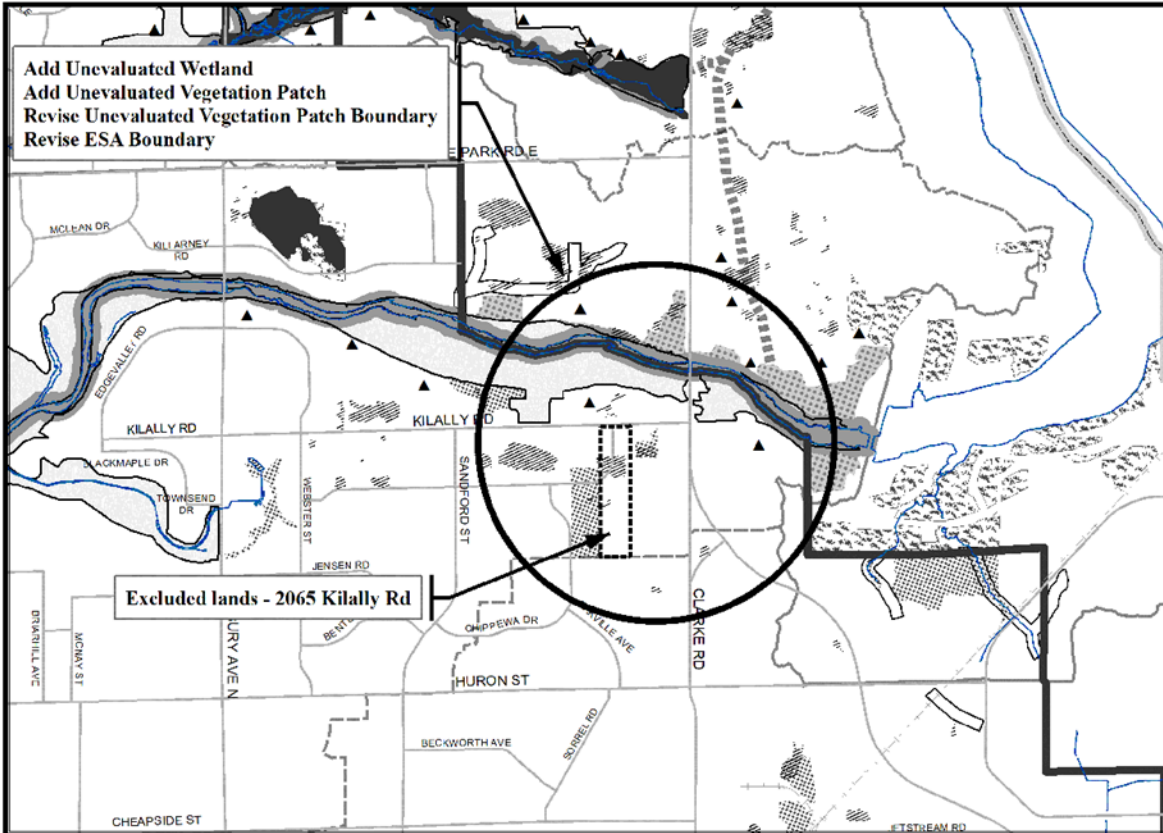
SCHEDULE #
TO
THE LONDON PLAN
 AMENDMENT NO. _____

PREPARED BY: Planning Services



FILE NUMBER: OZ--9275
PLANNER: CS
TECHNICIAN: MB
DATE: 4/15/2021

AMENDMENT NO:



NATURAL HERITAGE SYSTEM

- Provincially Significant Wetlands
- Wetlands
- Unevaluated Wetlands
- Significant Woodlands
- Woodlands
- Significant Valley Lands
- Valley Lands

- Areas of Natural and Scientific Interest
- Environmentally Significant Areas (ESA)
- Potential ESAs
- Upland Corridors
- Potential Naturalization Areas
- Unevaluated Vegetation Patches

Base Map Features

- Railways
- Water Courses/Ponds
- Streets (see Map 3)
- Conservation Authority Boundary
- Subwatershed Boundary

This is an excerpt from the Planning Division's working consolidation of Map 5 - Natural Heritage of the London Plan, with added notations.

<p align="center">SCHEDULE # TO THE LONDON PLAN</p> <p>AMENDMENT NO. _____</p> <p>PREPARED BY: Planning Services</p>	<p align="center"> Scale 1:30,000 Meters </p>	<p>FILE NUMBER: OZ-9275</p> <p>PLANNER: CS</p> <p>TECHNICIAN: MB</p> <p>DATE: 4/15/2021</p>
---	---	---