

RECEIVED  
2011-11-11

**FARHI**  
HOLDINGS CORPORATION

Councilor Bud Polhill  
Chair, Built and Natural Environment Committee  
London City Council

November 7, 2011

Chair Polhill and BNEC members:

Re: Former Lagrou Farms property on Dundas Street, East, known municipally as CON 1 NRT N PT Lots 1&2 RP 33R13782 Parts 1-3

Please accept this letter as a formal request to have the above property included within the new urban growth boundaries now under consideration.

Upon receiving such approval it would be our intention to develop this parcel to provide modestly-priced housing, for which demand in London is steadily growing. Given that our city's industrial development strategy has a focus on the east end, we believe it makes good sense to provide homes in the same area for the people who will be working in the new factories and warehouses the city has attracted and hopes to continue to attract.

Such proximity would also contribute to reducing London's carbon footprint, in that shorter commute times mean reduced automotive air pollution. They also mean less time stuck in traffic and more time for families.

But it should also be noted that economic development will continue along the 401 corridor to the east of the city. Having a new community of modestly-priced homes easily accesible to people working there would encourage more of them to live here in London, thereby increasing our assessment and tax base.

Although we would proceed with the development in stages, our ultimate goal would be to create an entire new neighbourhood of quality-built homes with all the local amenities required to make it an attractive place to live, work and raise children. yet still priced within the reach of working families on a budget.

We ask for your careful consideration of this request, and would appreciate the opportunity to make a more detailed presentation at the pleasure of your committee and/or city council.

Sincerely yours,

  
Shmuel Farhi

CITY OF LONDON  
PLANNING DIVISION

NOV 25 2011

Heather

FORWARDED TO

SEQUENT REFERRALS

ACTION

RECORDING

---

**From:** Shmuel Farhi  
**Sent:** Friday, November 25, 2011 4:21 PM  
**To:** Fleming, John M.; Fielding, Jeff  
**Cc:** Polhill, Bud; Barrett, Gregg; McNeely, Heather; Galloway, Sean; 'fontana@rogers.blackberry.net'; Jim Chapman  
**Subject:** RE: Letter re: Official Plan Review and Former Lagrou Farms

Hi John:

As I said in my letter to council, I believe this is a unique opportunity to create a very special development in east London, one that will provide quality housing for people who may not necessarily have higher incomes, while providing proximity to the growing industrial base in the east end of the city, and further east along the 401 corridor.

I would consider it a personal favour if you would be so kind as to keep me up to date on the boundary review process, and Farhi Holdings is ready, willing and able to work with the city as closely as possible to bring this new development to fruition, to the betterment of our city.

I look forward to talking with you further on this matter in the very near future.

Best Regards,

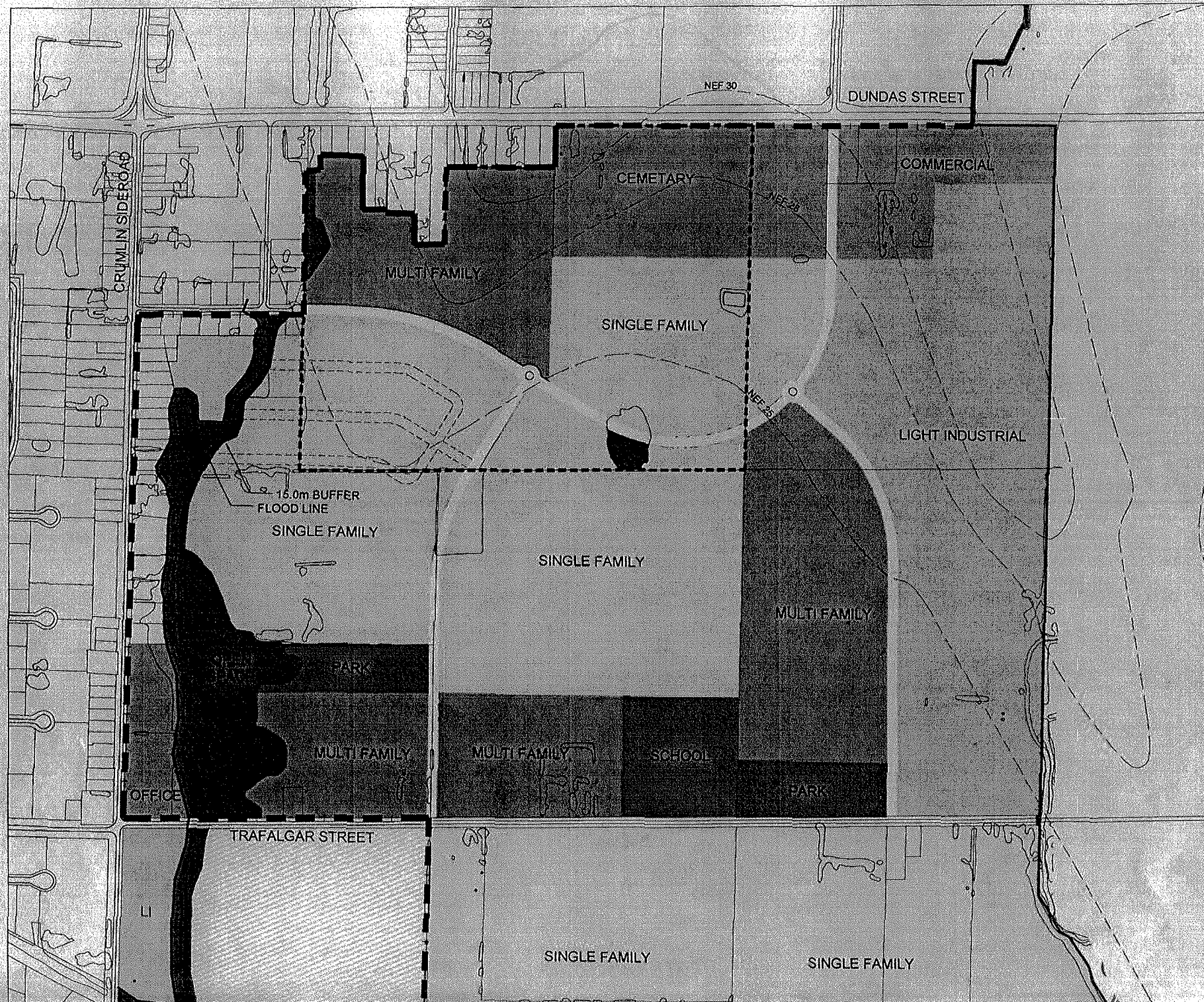
Shmuel



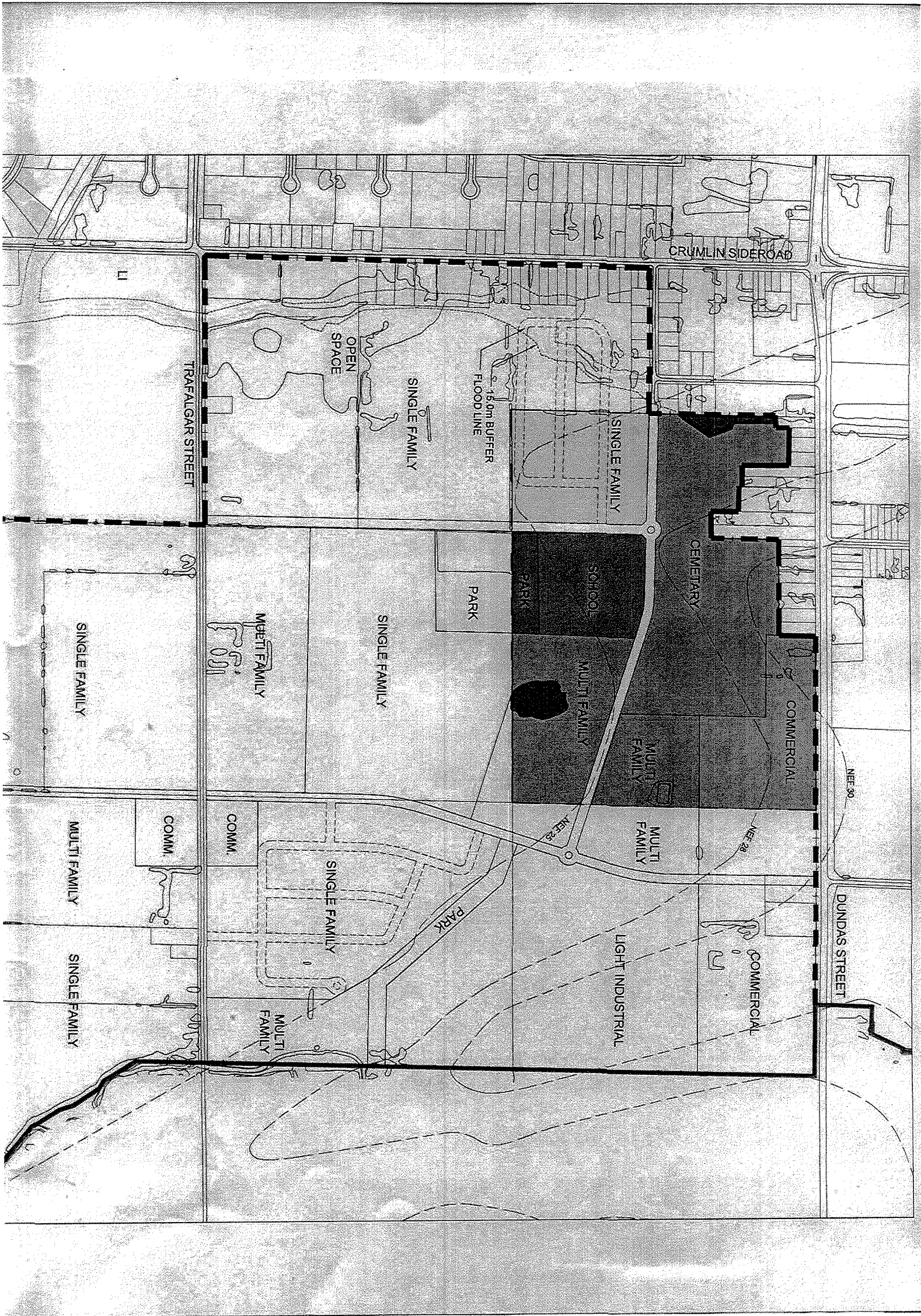
Shmuel Farhi, President  
Farhi Holdings Corporation  
484 Richmond Street, Suite 200  
London, Ontario  
N6A 3E6

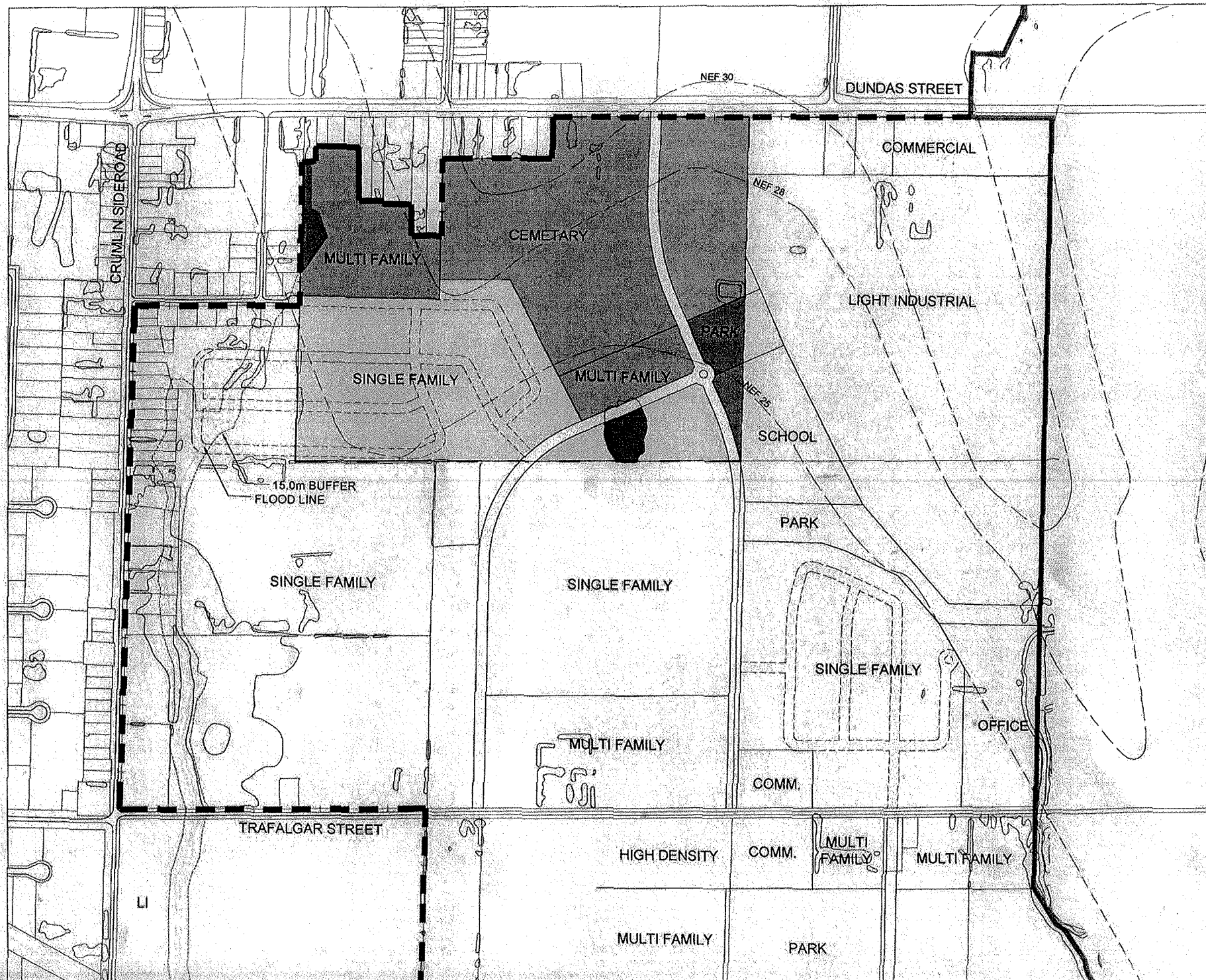




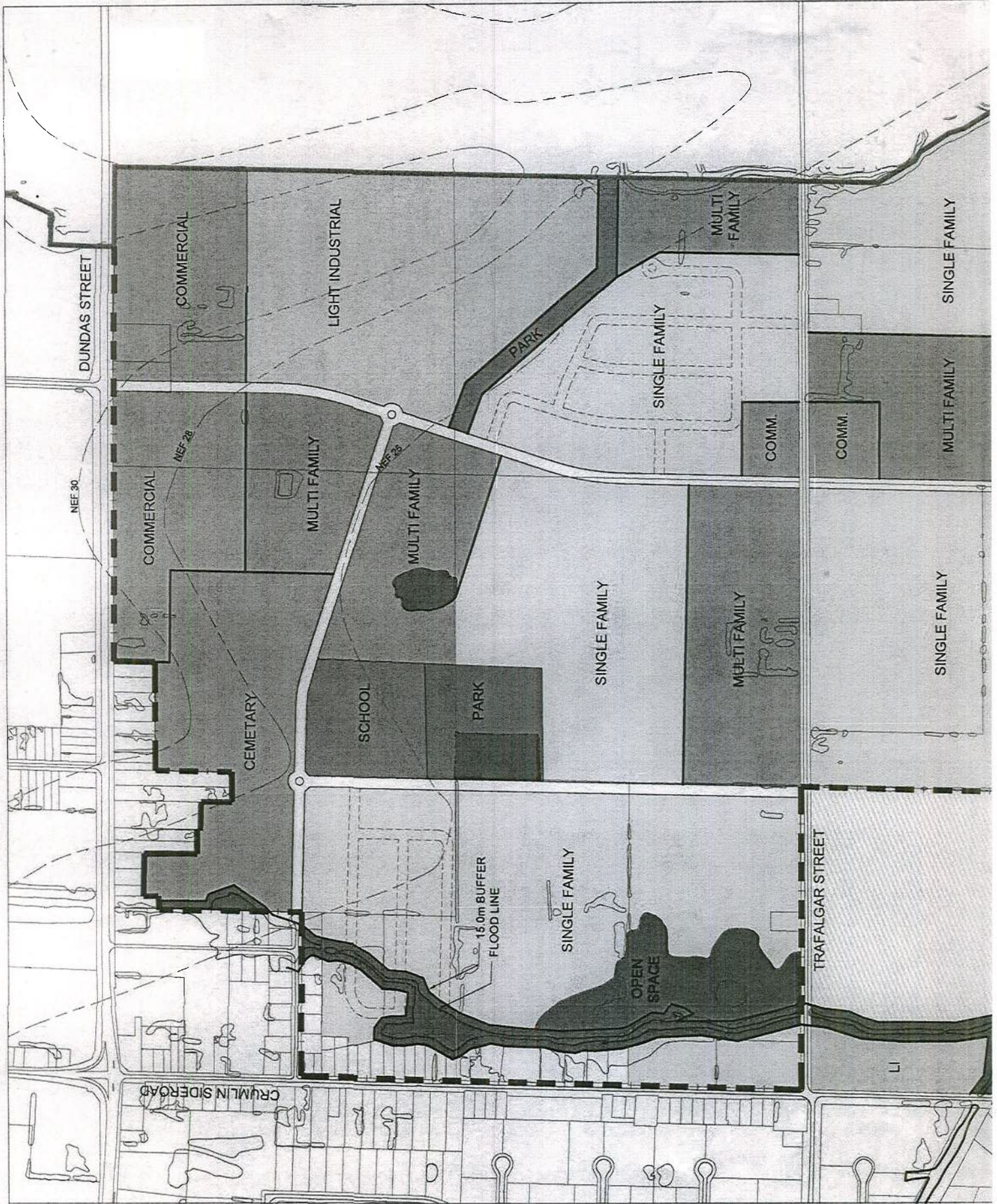




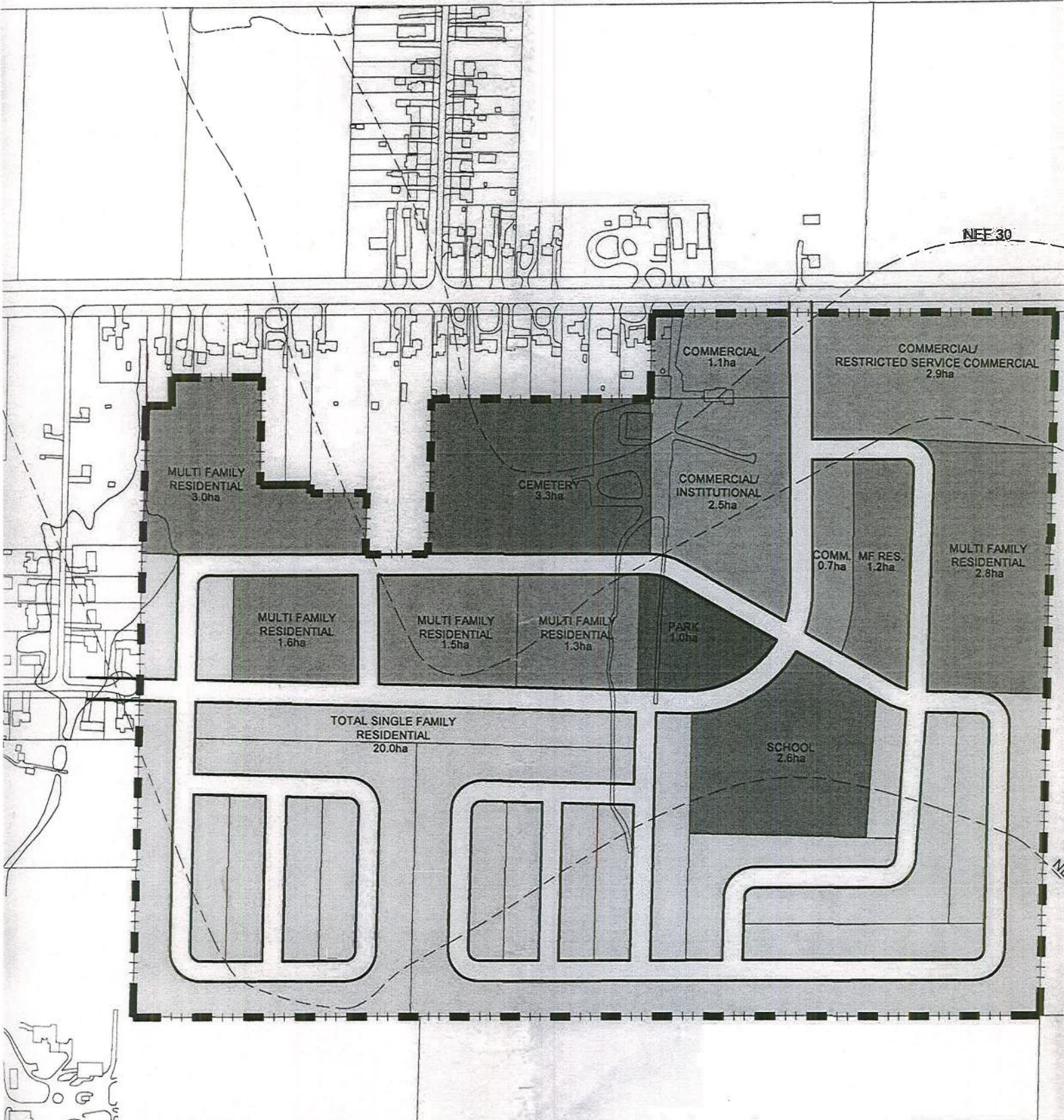




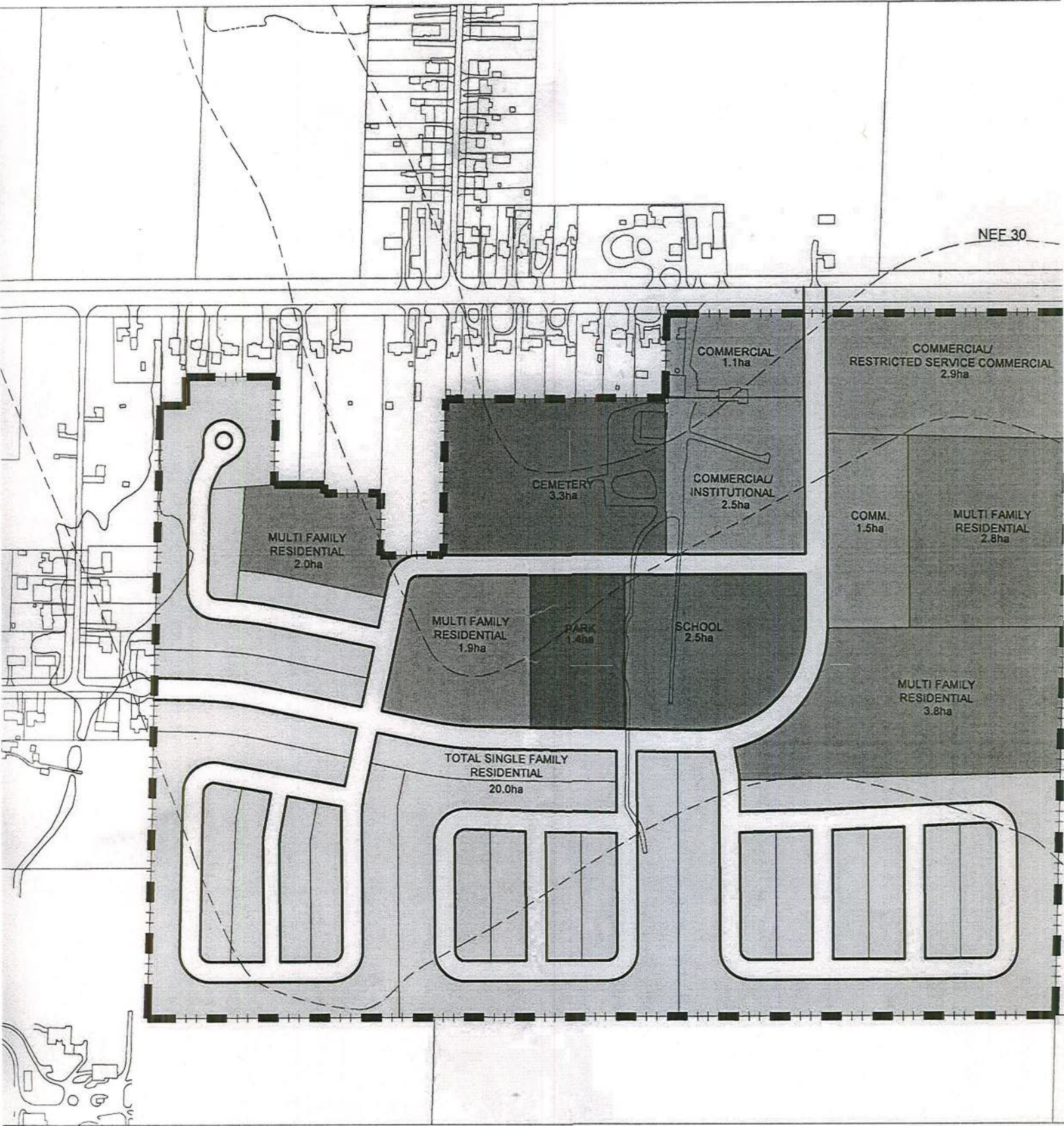








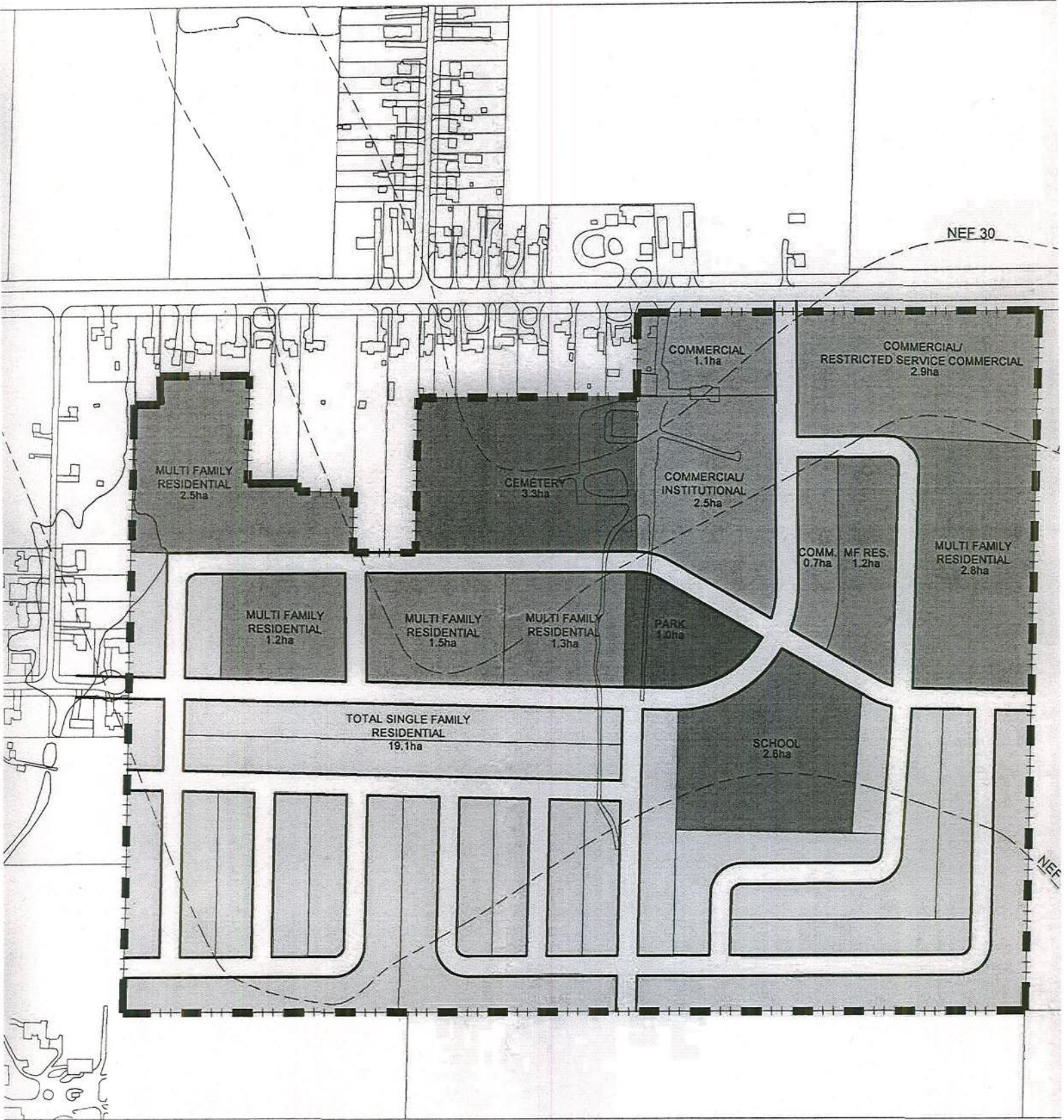




nd

— CITY OF LONDON ASSESSMENT (2001) MAPPING  
 - - - - - NEF 1991

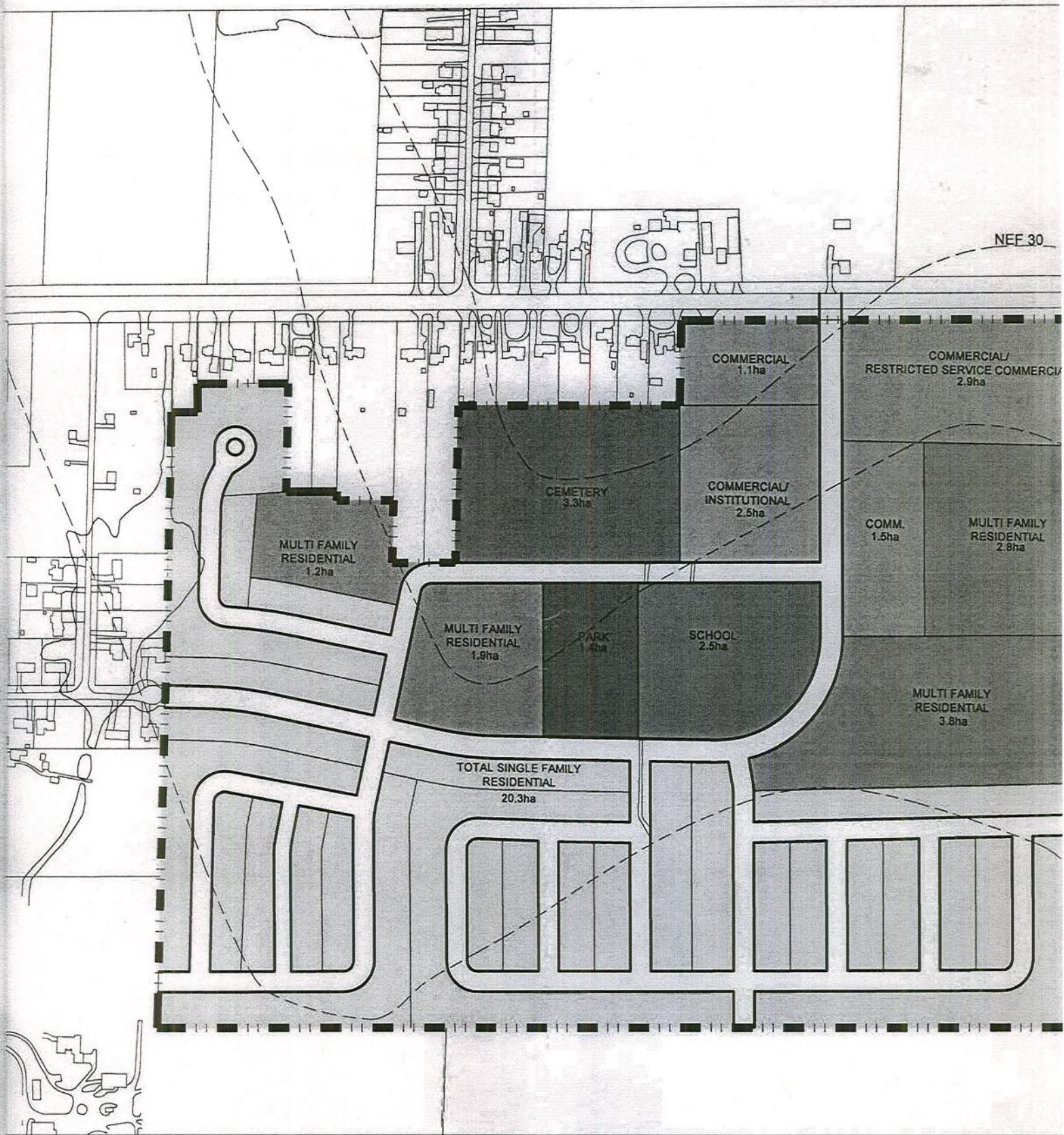




— CITY OF LONDON ASSESSMENT (2001) MAPPING

- - - NEF 1991





end

— CITY OF LONDON ASSESSMENT (2001) MAPPING

- - - NEF 1991



