



Cycling Infrastructure Update



Presentation to the Integrated Transportation
Community Advisory Committee
September 20, 2023



Current Context

- Local Context
 - City Council's Strategic Plan
 - London Plan
 - Cycling Master Plan
 - Climate Emergency Action Plan
- Provincial and International
 - Designing for “all ages and abilities” or “interested but concerned” user
- Usage
 - An average of 12,600 riders per month on the Dundas St and Colborne St protected bike lanes



City Team

- On-road cycling infrastructure
 - Active Transportation team within the Transportation Planning & Design division
- Supportive programs and amenities
 - Transportation Demand Management team within the Environment & Climate Change division
- Park pathways
 - Parks Long Range Planning & Design
 - Parks Design & Construction



How projects are delivered

1. Active Transportation led project
 - Examples: Colborne Street, Cheapside Street

These projects are prioritized by AT needs/ budget

2. Growth project
 - Examples: Southdale Road, Masonville Intersection
3. Infrastructure Renewal
 - Examples: Quebec Street, Platt's Lane, Traffic Signals
4. Park Pathways
5. Development – New subdivisions & bike parking



Supportive Programs and Amenities

What is Transportation Demand Management?

The use of policies, programs, services and products that influence whether, why, when, where and how people travel. TDM strategies seek to increase the efficiency of a transportation system by influencing travel behaviour.

✓ Reduce

- Reliance on single occupancy vehicles (SOV)
- Vehicle kilometres travelled (VKT)
- Capital expenditures
- Maintenance costs
- Traffic congestion
- GHG emissions

✓ Improve

- Road safety
- Air quality
- Health
- Social connections



Supportive Programs & Amenities

As part of TDM activities:

- Transportation Management Association (coming soon)
- Bike Parking Plan (from lockers to larger facilities)
- Bikeshare and other micromobility
- Provincial pilots:
 - Personal Electric Kick-Scooter / Personal and Commercial Cargo Power-assisted Bicycle
- Education, Promotion and Celebrations



2022 Summary

Type of Facility	Length (km)	Lane Length (km)
Protected Bike Lanes and Cycle Tracks	6.8	12.2
Painted Bike Lanes and Paved Shoulders	4.1	8.1

Examples:

- Brydges St & Wavell St
- Fanshawe Park Rd
- Queens Ave



2023 Summary

Type of Facility	Length (km)	Lane Length (km)
Protected Bike Lanes and Cycle Tracks	5.7	11.0
Painted Bike Lanes and Paved Shoulders	1.7	3.4

Examples:

- Bradley Ave
- Southdale Rd
- Cheapside St
- Colborne St
- Dingman Dr



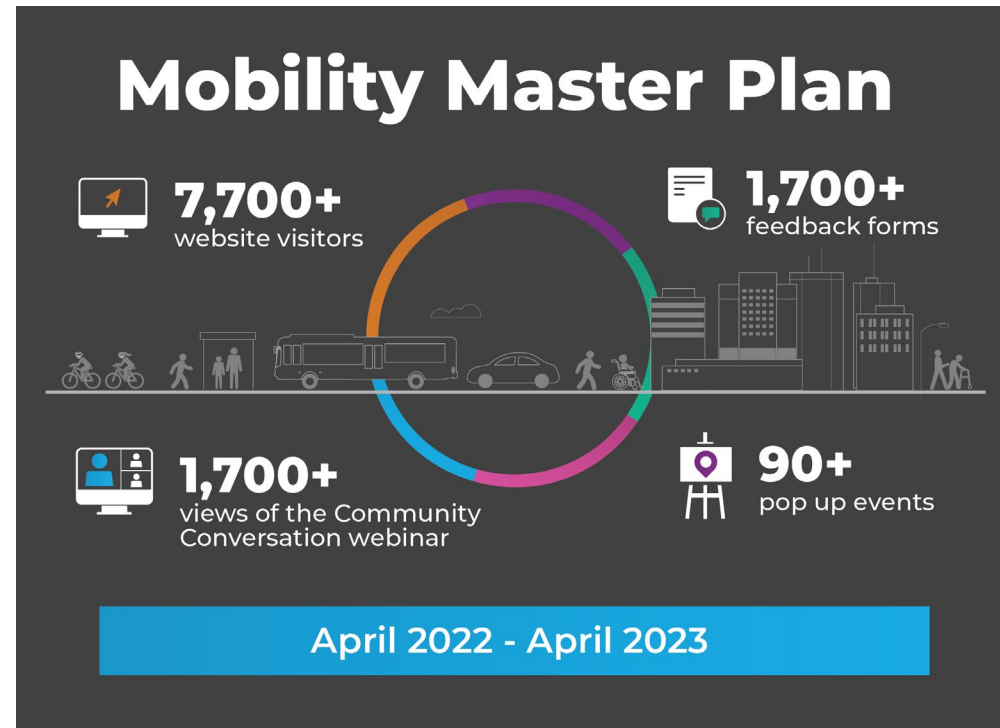


Looking ahead to 2024

- Central Ave – Richmond St to William St
- Ridout St – King St to Horton St
- Colonel Talbot Rd – Phase 1
- Fanshawe Park Rd Cycle Tracks – North Centre Rd West to North Centre Rd East
- Bradley Ave – Wharncliffe Rd to White Oak Rd
- Oxford St - Mornington Ave to Highbury Ave N
- Stoney Creek – Thames Valley Parkway (TVP)
- SoHo TVP Extension – Wellington to Maitland

Mobility Master Plan

- Builds upon Cycling Master Plan
- Integrates cycling network with walking, transit, and road networks
- Provides implementation plan





Questions?

- Visit london.ca/cycling or email cycling@london.ca for more resources or information