

TO:	<p>CHAIR AND MEMBERS CIVIC WORKS COMMITTEE MEETING ON SEPTEMBER 9, 2013</p>
FROM:	<p>JOHN BRAAM, P. ENG. MANAGING DIRECTOR, ENVIRONMENTAL & ENGINEERING SERVICES AND CITY ENGINEER</p> <p>AND</p> <p>GEORGE KOTSIFAS, P. ENG. MANAGING DIRECTOR, DEVELOPMENT AND COMPLIANCE SERVICES AND CHIEF BUILDING OFFICIAL</p>
SUBJECT:	<p>FANSHAWE PARK ROAD WEST AND DALMAGARRY ROAD TRAFFIC SIGNAL</p>

RECOMMENDATION

That on the recommendation of the Managing Director of Environmental & Engineering Services and City Engineer and the Managing Director of Development and Compliance Services and Chief Building Official, the following report **BE RECEIVED** for information.

BACKGROUND

Purpose:

At its meeting on August 27, 2013, Council passed the following resolution with respect to the new traffic signal at the intersection of Fanshawe Park Road West and Dalmagarry Road:

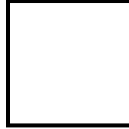
“That the Civic Administration BE DIRECTED to report back, at a Special Meeting of the Civic Works Committee, to be held prior to the September 17, 2013 meeting of Municipal Council, to treat this as a priority and provide all available options for the installation of a traffic signal at the intersection of Dalmagarry Road and Fanshawe Park Road West, as soon as possible, within the 2013 construction year.”

The installation of this traffic signal is a requirement of two development agreements and this report provides the Committee and Council with the background information.

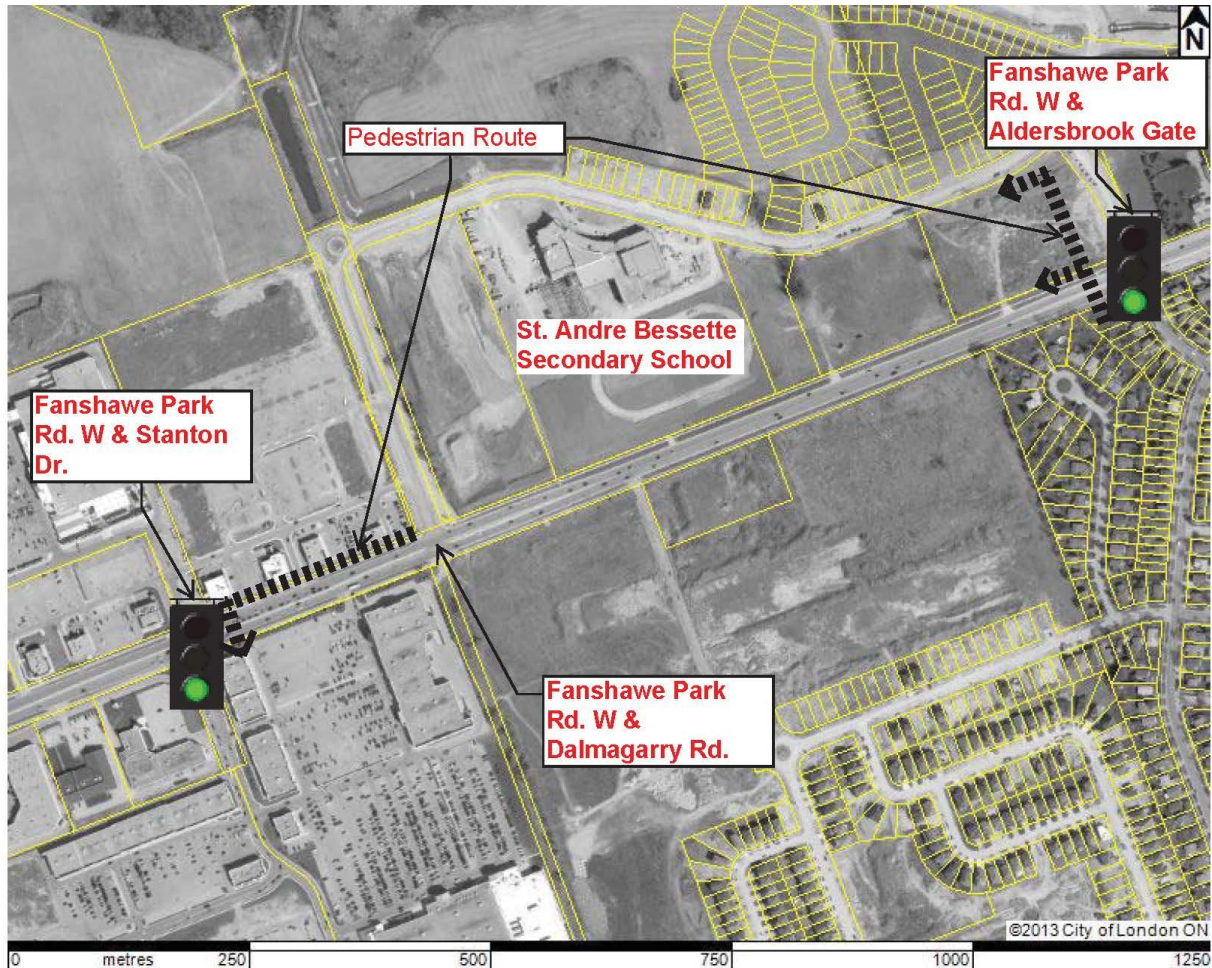
DISCUSSION

The intersection of Fanshawe Park Road West and Dalmagarry Road is currently controlled by a stop sign on the north leg of Dalmagarry Road; noting the south leg of Dalmagarry Road has not been constructed. Commercial traffic is currently using this intersection and starting September 3rd, 2013 the St. Andre Bessette Secondary School will open north-east of the intersection (see map). The installation of a traffic signal at this intersection is referenced in two agreements – the Calloway REIT Fox Hollow DA (SP07-008689), which requires the intersection signals to be installed prior to the occupancy of new buildings (unless otherwise approved by the General Manager of Environmental and Engineering Services and City Engineer); and the Drewlo Hyde Park Meadows Phase II subdivision agreement (39T-02509), which requires the signals to be installed by the developer “*when deemed warranted by the City*”.

Current traffic volumes do not meet the Provincial warrant for traffic signals; however, it is expected that when Dalmagarry Road is constructed south of Fanshawe Park Road then the traffic signal warrant would be satisfied. The developer’s consulting engineer for Hyde Park Meadows Phase II is preparing the detailed design for the traffic signal installation (~90% complete) for when the south leg of Dalmagarry Road is constructed. The developer does not



anticipate constructing Dalmagarry Road and the traffic signals until 2014 at the earliest. The estimated cost to construct this traffic signal is \$170,000 to \$200,000.



The following two options are available if Council wishes to construct the Fanshawe Park Road /Dalmagarry Road traffic signal in advance of the developer's timeframe:

1. The subdivision or development agreement could be deemed in default and the City could use the available securities to complete the work. This may result in delays as a result of the legal process required.
2. The City assumes construction of the traffic signal. If this option is used then the City would be responsible for 100% of the construction cost as the City cannot make a claim to the Urban Works Reserve Fund.

Both of the above options contain risks to the City as there is no guarantee that the traffic signals would be constructed in 2013. General discussions with local traffic signal contractors indicates that they are currently very busy and they may not submit a bid for construction of a new traffic signal if it were tendered for completion this year. This is confirmed by the City's recent experience with the tendering of several traffic signals projects where only one valid bid was received. Based the above, any new tenders for work to be completed in 2013 may not garner any interest from qualified traffic signal contractors. It should be noted that if a qualified contractor does bid on this project, the timeframe for tendering and delivery of materials would result in the erection of the traffic signal poles in mid-December but only if an aggressive schedule is maintained.

Agenda Item #	Page #

If traffic signals are not installed until the construction of Dalmagarry Road south of Fanshawe Park Road then there are two options for vehicular and pedestrian traffic to exit the northern subdivision:

1. Vehicular traffic wishing to travel east on Fanshawe Park Road have access to a traffic signal at the intersection of Fanshawe Park Road W and Aldersbrook Gate. Pedestrian traffic destined for the residential subdivision south of Fanshawe Park Road can cross at the Fanshawe Park Road/Aldersbrook Gate traffic signal. It should be noted that this is the only pedestrian access to the southern residential subdivision since most of the lands immediately east of Dalmagarry Road will be a construction zone while the subdivision is developed.
2. Pedestrians accessing the commercial development are able to cross Fanshawe Park Road at Stanton Drive which is 275m west of Dalmagarry Road.

Pedestrians crossing Fanshawe Park Road at Dalmagarry Road do not have a destination at this time as the land is currently undeveloped. If pedestrians are heading to the residential area they can cross at Aldersbrook Gate. Pedestrians going to the commercial development can cross Fanshawe Park Road at Stanton Drive.

If there is still concern that pedestrians will cross Fanshawe Park Road at Dalmagarry Road then the installation of a temporary intersection pedestrian signal (IPS) is an option that could be accomplished in 2013. This would involve the installation of wooden poles with the traffic signal heads suspended over Fanshawe Park Road on wires. The estimated cost for this work is \$50,000; however, these are sunken costs and materials could not be used for the permanent traffic signal. The materials for a temporary IPS are readily available; therefore, this work could be completed in 2013.

The new St. Andre Bessette Secondary School fronts onto Tokala Trail and backs onto Fanshawe Park Road. School Area signs will be installed on Tokala Trail and larger School Area signs will be installed on Fanshawe Park Road east and west of the school property.

CONCLUSION

It is expected that traffic volumes will warrant the installation of a traffic signal at the Fanshawe Park Road/Dalmagarry Road intersection when Dalmagarry Road is extended southerly. Exercising the default clauses of the subdivision/development agreements or the City taking control of the traffic signal installation does not provide any assurances that the traffic signal could be installed in 2013.

There are two adjacent traffic signals (Fanshawe Park Road/Stanton Drive and Fanshawe Park Road/Aldersbrook Gate) which vehicular and/or pedestrian traffic can use to enter or cross Fanshawe Park Rd W. A temporary IPS at an estimated cost of \$50,000 could be constructed in 2013; however, this would be an additional cost above that of the permanent traffic signal and the City would be responsible for all of the cost.

School Area signs will be installed on both Fanshawe Park Road and Tokala Trail east and west of the St. Andre Bessette Secondary School.

Acknowledgements:

This report was prepared with assistance from Terry Grawey in Development Services and Shane Maguire in the Roadway Lighting & Traffic Control Division.

PREPARED BY:	RECOMMENDED BY:
EDWARD SOLDO, P.ENG. DIRECTOR, ROADS AND TRANSPORTATION	JOHN BRAAM, P.ENG. MANAGING DIRECTOR, ENVIRONMENTAL & ENGINEERING SERVICES AND CITY ENGINEER

RECOMMENDED BY:	
GEORGE KOTSIFAS, P. ENG. MANAGING DIRECTOR, DEVELOPMENT AND COMPLIANCE SERVICES AND CHIEF BUILDING OFFICIAL	

--	--

Appendix "A"

August 27, 2013 letter from Councillors M. Brown and P. Hubert



300 Dufferin Avenue
P.O. Box 5035
London, ON
N6A 4L9

August 27, 2013

His Worship the Mayor
and Members of Council


Re: **Emergent Motion – Traffic Signals – Dalmagarry Road and Fanshawe Park Road West**


A traffic signal is proposed to be put in place at the intersection of Dalmagarry Road and Fanshawe Park Road West, some time in the future. However, given that St. Andre Bessette School will be open in September and there will be a resultant need to ensure the safety of the students attending this School, it is important that the traffic signal be put in place immediately, rather than at a later date.

Moved by Councillor M. Brown and seconded by Councillor P. Hubert:

That the Civic Administration BE DIRECTED to report back, at a Special Meeting of the Civic Works Committee, to be held prior to the September 17, 2013 meeting of Municipal Council, to treat this as a priority and provide all available options for the installation of a traffic signal at the intersection of Dalmagarry Road and Fanshawe Park Road West, as soon as possible, within the 2013 construction year.

Respectfully submitted by:


M. Brown
Councillor, Ward 7


P. Hubert
Councillor, Ward 8