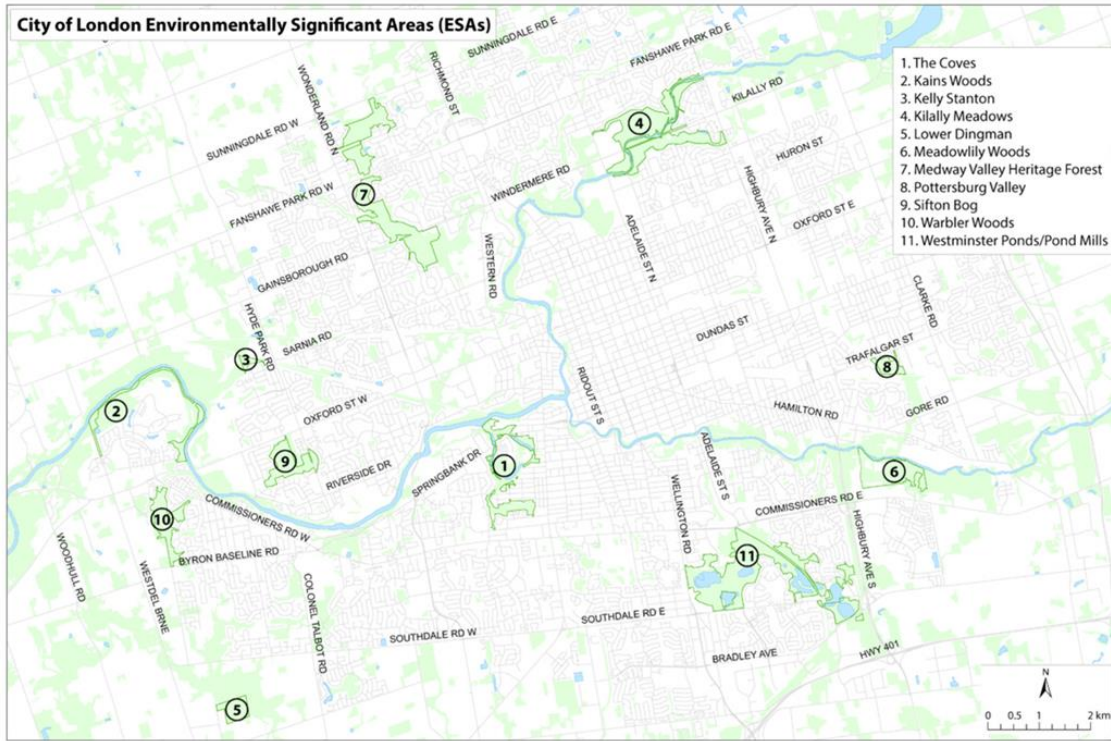


Phase 1 CMP Package

ECAC – July 20, 2023

Environmentally Significant Area Management



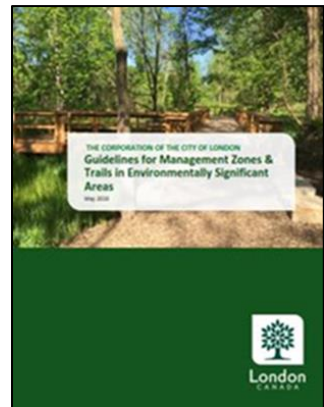
Conservation Master Plan

Phase 1

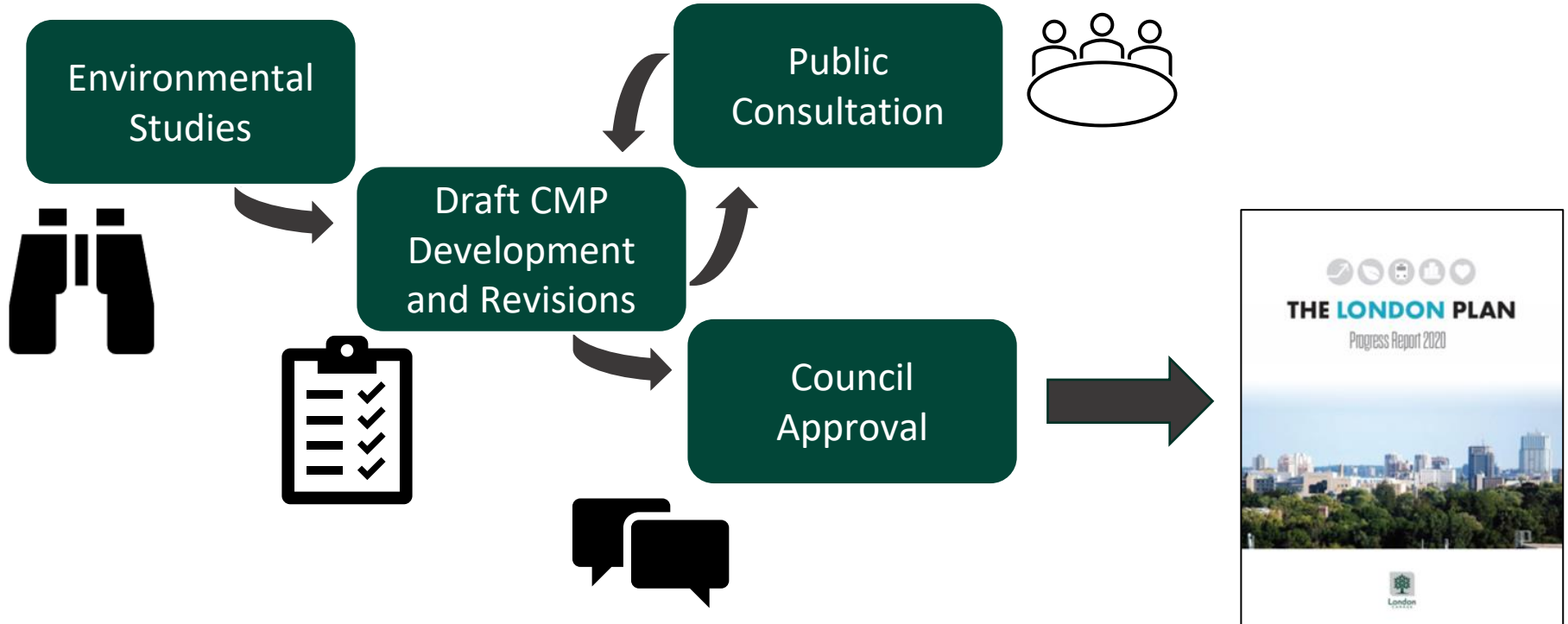
Community Engagement and Participation
Life Science Inventory and Evaluation
Boundary Delineation
Application of Management Zones and Review of Existing Trails
Identification of Management Issues

Phase 2

Community Engagement and Participation
Goals, Objectives and Recommendations
Ecological Protection, Enhancement and Restoration
Trail Planning and Design Process
Priorities for Implementation
Final Conservation Master Plan



Conservation Master Plan Process



What is a Conservation Master Plan?

Phase 1 CMP Components



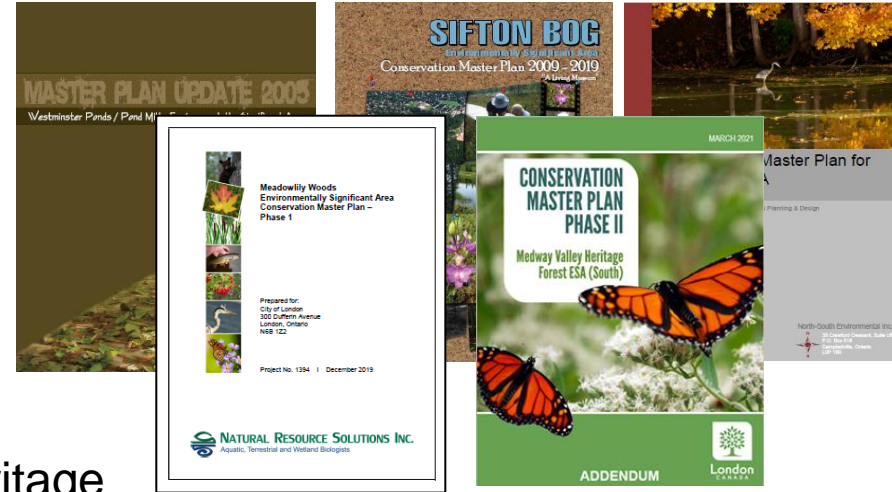
1. Community Engagement and Participation
2. Life Science Inventory and Evaluation
3. Boundary Delineation
4. Management Zone Application & Existing Trail Review
5. Identify Management Issues



Which ESAs have CMPs?

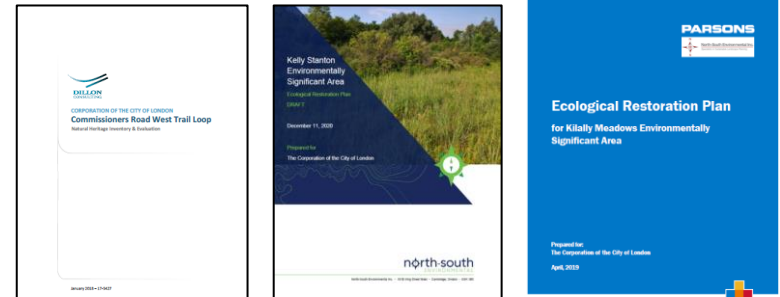
Council Approved CMPs:

- Coves
- Meadowlily Woods (Phase 1)
- Medway Valley N/S
- Sifton Bog
- Westminster Ponds

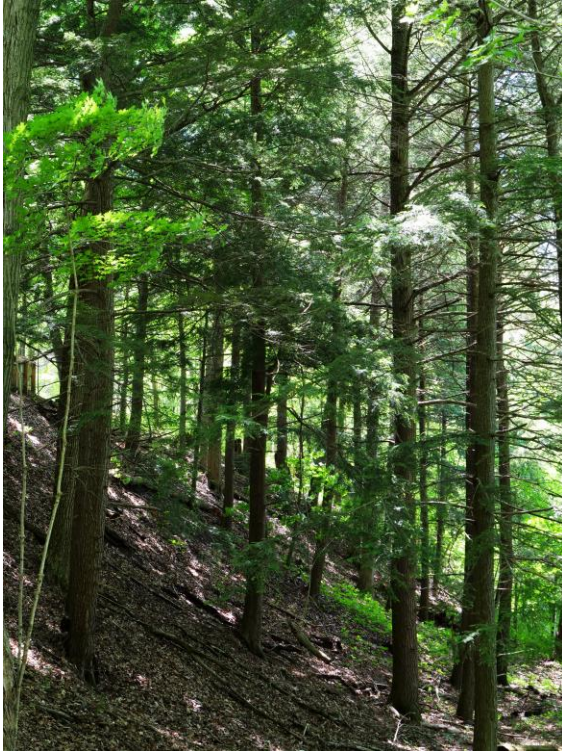


Ecological Restorations and Natural Heritage Reviews:

- Kilally Meadows
- Kelly Stanton
- Byron Valley



Which ESAs need CMPs?



Kains Woods



Warbler Woods



Pottersburg Valley



Lower Dingman

Which ESAs need CMPs?



Staff have initiated the Phase 1 CMP project to bring these four ESAs up to the management standard.



Through a separate scope the existing Ecological Restoration Plans for Kelly Stanton ESA and Kilally Meadows ESA will be updated to include all components of a CMP.

2023 Phase 1 CMP Package: RFP



Ecological Land Classification



Floral Inventory



Breeding Bird Surveys



Anuran Call Surveys



Bat Habitat Assessment



Significant Wildlife Habitat Assessment

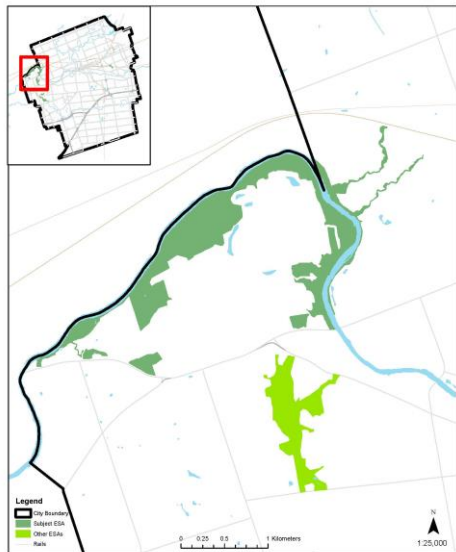


Species at Risk Screening

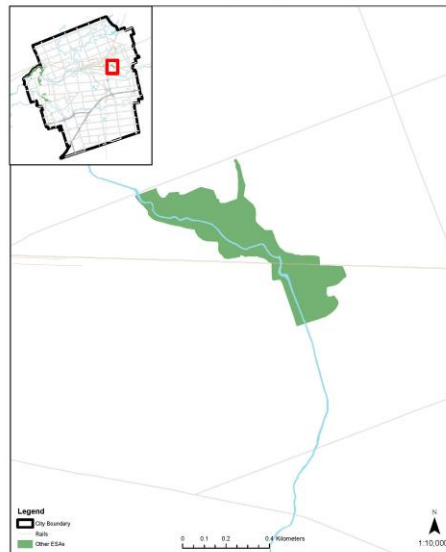


2023 Phase 1 CMP Package: RFP

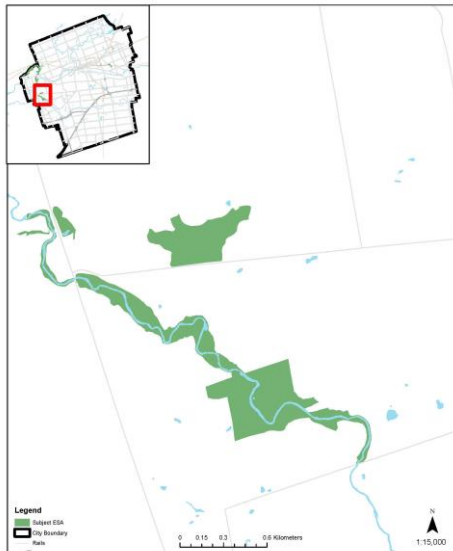
Kains Woods ESA



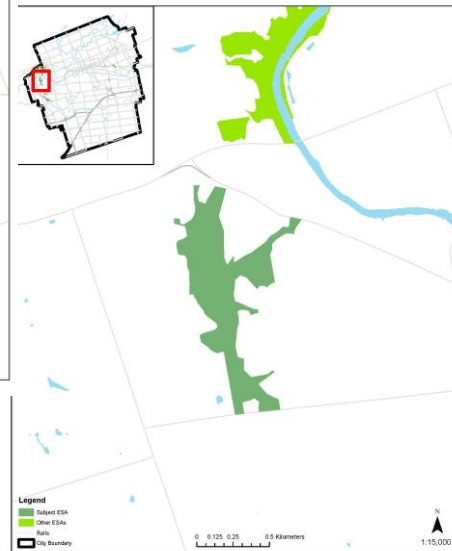
Pottersburg Valley ESA



Lower Dingman Corridor ESA

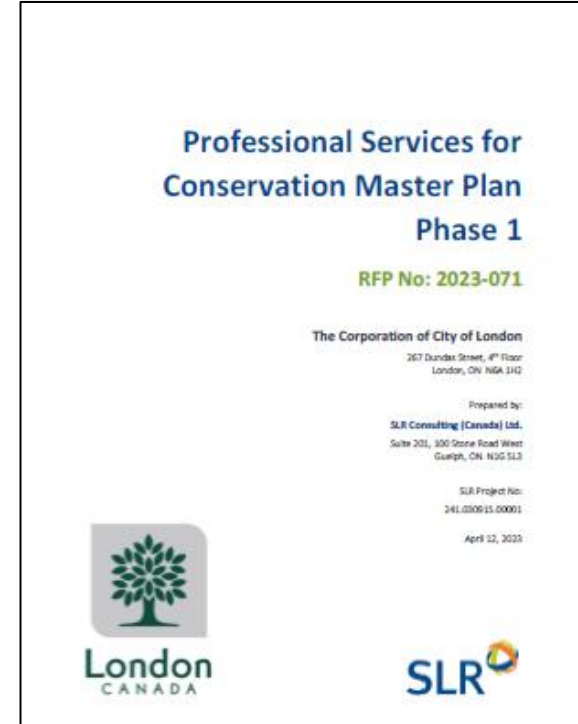
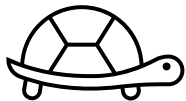


Warbler Woods ESA



2023 Phase 1 CMP Package: Award

- SLR awarded based on their strong project team.
- Lead Botanist Mike Oldham, author of:
List of the Vascular Plants of Ontario's Carolinian Zone (Ecoregion 7E)
- Field work has begun!
- Map turtle identified in one ESA



Next Steps



SLR – Complete Field Studies



Opportunity for Citizen science bioblitz on iNaturalist
#CMPLondonESA2023



Two Open Houses to Present Draft CMPs



Submit Phase 1 CMPs for Council Consideration



London
CANADA

Thank you

london.ca