



London  
CANADA



Lambeth Centennial Park Boardwalk Lifecycle Renewal  
7112 Beattie Street, London



# Lambeth Centennial Park Boardwalk Lifecycle Renewal

*Ecological Community Advisory Committee (ECAC) Presentation*

*July 2023*



London  
CANADA

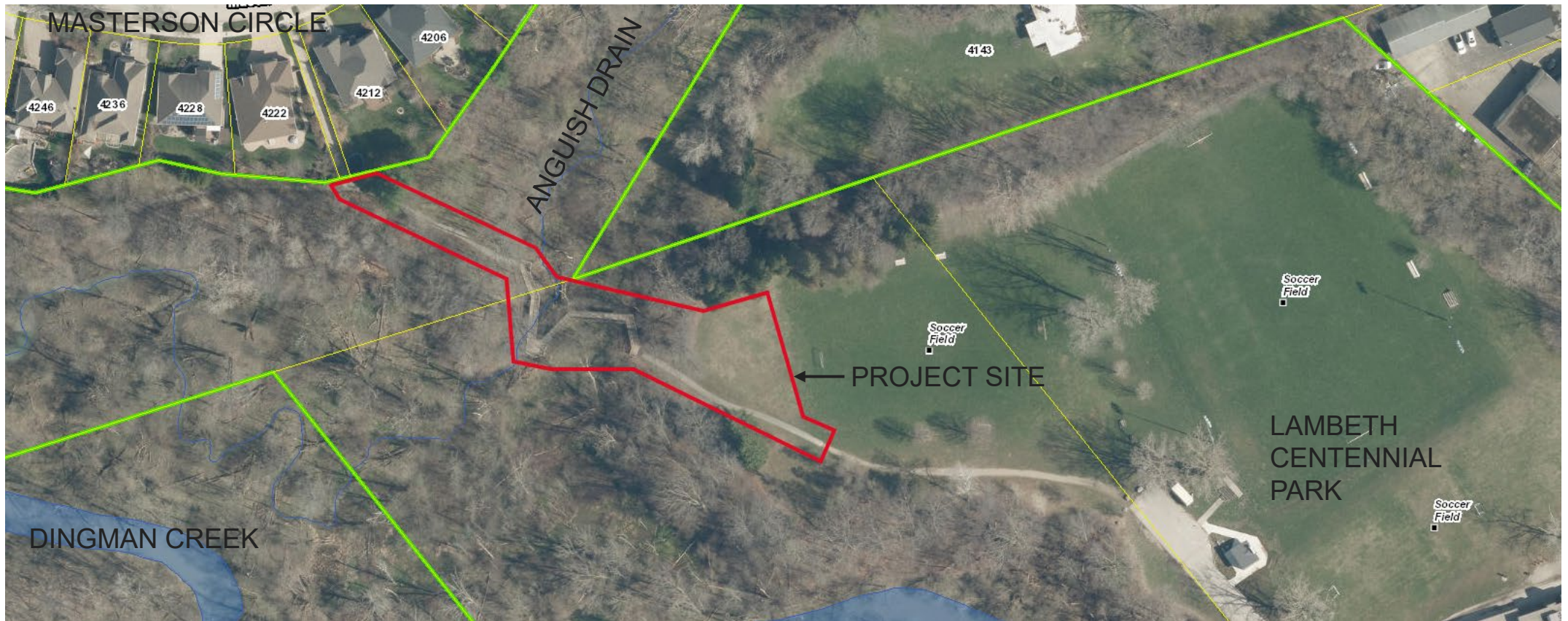


Lambeth Centennial Park Boardwalk Lifecycle Renewal  
7112 Beattie Street, London



# Agenda

1. Project Study Area and Background
2. Project Goals
3. Design Considerations
4. Natural Heritage Features & Species Records
5. Natural Heritage Studies
6. Ecological Restoration



# Project Site and Background

- The boardwalk is within the Dingman Environmentally Significant Area and Significant Valleylands identified on Map 5 of the London Plan.
- The boardwalk is within an area regulated by the UTRCA.
- The existing boardwalk was installed in 2000 and is in need of lifecycle renewal.
- In 2017/2018 extensive background studies and 100% detailed design drawings were completed by Stantec and Debbert Engineering. Due to lack of funding, the project was not constructed in 2018.



London  
CANADA



# Project Goals

- Protect valleylands per the complete corridor approach identified in the Dingman Creek Subwatershed Servicing Study EA.
- Maintain and enhance the City's recreational pathway system and active mobility network (consistent with Provincial policies and the London Plan).
- Provide ecological net benefit through improved boardwalk design and naturalization / restoration, including invasive species management, native planting, and improved flows within the tributary.
- Promote healthier lifestyles and reduce greenhouse gas emissions by encouraging active mobility.



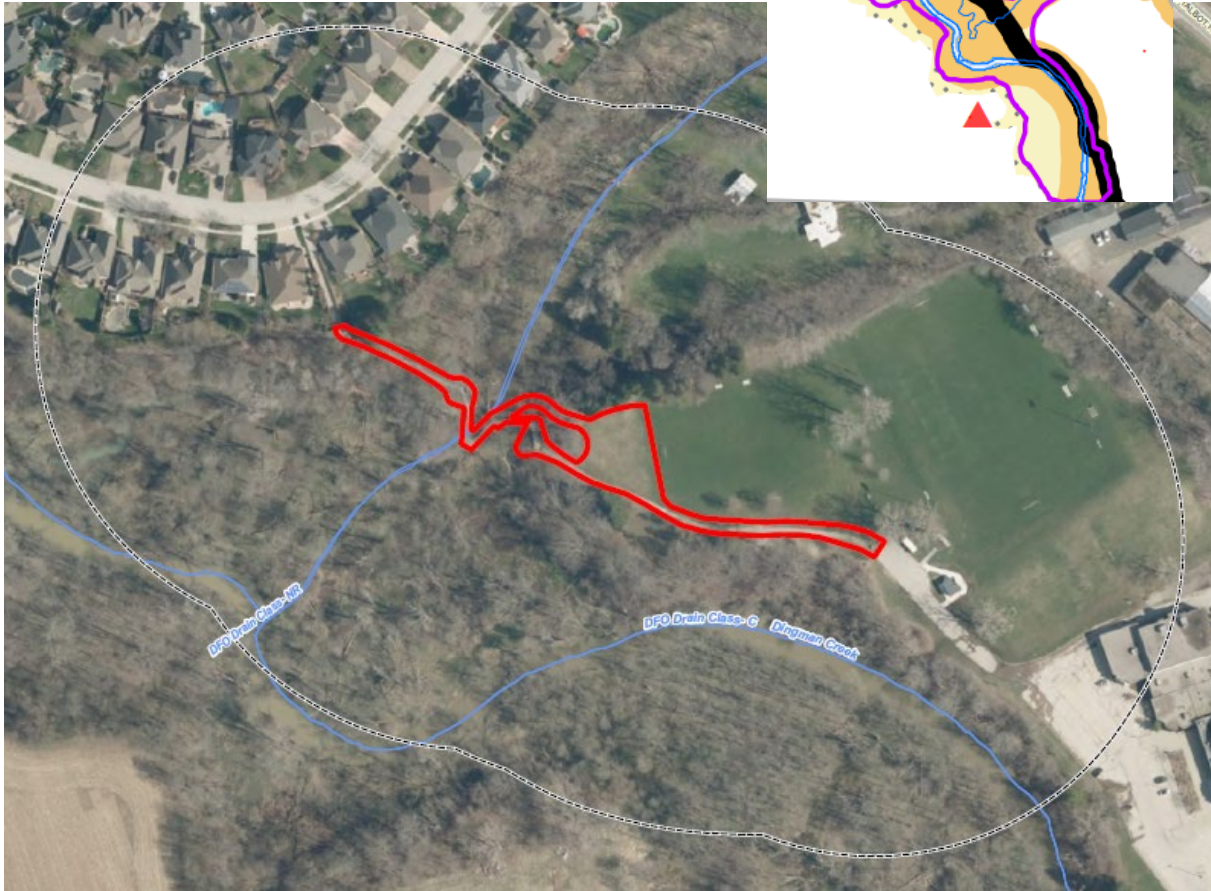
London  
CANADA




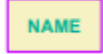
# Existing Conditions

- The existing boardwalk consists of a wooden structure and decking with multiple concrete piers. It requires considerable maintenance and is susceptible to vandalism.
- Multiple concrete piers are located within the tributary.
- The existing concrete piers (over 40) are obstacles to flows, increasing flow velocity and erosion in the tributary (Anguish Drain).
- The existing boardwalk and pathway system is identified on Map 4 Active Mobility Network of the London Plan and provides a key linkage for residences to the north and a connection from the Lambeth Arena and Community Centre to the south.





- The London Plan Map 5 (Natural Heritage)

-  Significant Valleylands
-  Environmentally Significant Areas (ESA)

- Natural Heritage Information Centre:
  - Wooded Areas
  - Anguish Drain (permanent fish habitat)
  - Dingman Creek (permanent fish habitat)
- Background SAR / SOCC Records (1-km Element Occurrence records from NHIC):

Common Name	Provincial Rank	SARO Status	COSEWIC Status	Source
Snapping Turtle	S4	Special Concern	Special Concern	NHIC
Eastern Wood-pewee	S4B	Special Concern	Special Concern	NHIC
Greater Redhorse	S3			NHIC
Silver Shiner*	S2S3	Threatened	Threatened	DFO

\* Record from Dingman Creek.

# Natural Heritage Features and Species Records



London  
CANADA



### Previous Studies:

- Stantec field data collection for the project in 2017
- Stantec (2022) North Lambeth P9 SWM Facility – Tributary C Post-Construction Monitoring Report, Year 3 (2021)
- UTRCA London Dingman Creek Subwatershed monitoring Report (November 2022)

### 2023 Site Investigations:

- Vegetation surveys and wildlife habitat assessments
  - Ecological Land Classification
  - Botanical inventory
  - Species at Risk and Significant Wildlife Habitat assessments
- Wildlife surveys
  - Amphibian call surveys
  - Breeding bird surveys
  - Acoustic bat surveys
  - Aquatic habitat assessments and fish community sampling

### Environmental Impact Study Report:

- Draft report fall 2023

# Natural Heritage Studies





London CANADA



# Lambeth Centennial Park / Dingman Ecological Corridor Restoration Plan 2024-2026

Lambeth Centennial Park Boardwalk Lifecycle Renewal  
7112 Beattie Street, London



## Legend

- Priority Invasive Species Management
- Proposed Naturalization with ReForest London
- Parcel Fabric
- City Property
- Washrooms
- Lambeth Community Centre
- Parking Lot
- Water
- Existing Path
- Replacement Boardwalk Bridge

## As per the City of London Invasive Plant Management Strategy

Scale: 1:3,000

Priority species to be managed include:

- Phragmites\*
- Dog Strangling Vine\*
- Buckthorn
- Japanese Knotweed\*
- Giant Hogweed\*
- Initial management in 2024
- Follow up / touchups in 2025

\*If present

# Lambeth Centennial Park - 7112 Beattie Street

Proposed Naturalized Areas in Lambeth Centennial Park for Fall 2024

Lambeth Centennial Park Boardwalk Lifecycle Renewal  
7112 Beattie Street, London



Scale: 1:1,500

## Legend

- Proposed Planting
- Roads
- Parcels
- Water
- Restroom
- Parking Lot

POLYGON	AREA (m <sup>2</sup> )	TREES	SHRUBS	TOTAL WOODY PLANTS
A	845	110	40	150
B	294	35	15	50
<b>Planting Density: 1800/ha</b>				

## Candidate Species List

### Large Trees

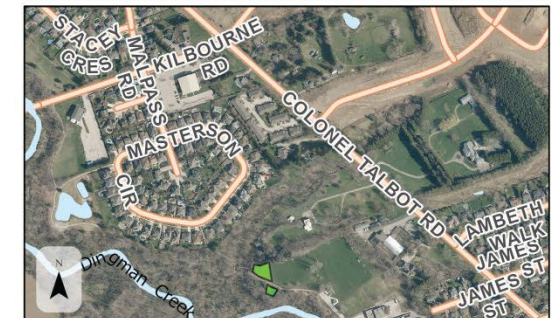
- |                   |                              |
|-------------------|------------------------------|
| Freeman Maple     | <i>Acer x freemanii</i>      |
| Sugar Maple       | <i>Acer saccharum</i>        |
| Bitternut Hickory | <i>Carya cordifornis</i>     |
| Blue Beech        | <i>Carpinus caroliniana</i>  |
| Hackberry         | <i>Celtis occidentalis</i>   |
| Sycamore          | <i>Platanus occidentalis</i> |
| Black Cherry      | <i>Prunus seratina</i>       |
| Bur Oak           | <i>Quercus macrocarpa</i>    |
| White Cedar       | <i>Thuja occidentalis</i>    |
| Basswood          | <i>Tilia americana</i>       |

### Small Trees

- |                     |                            |
|---------------------|----------------------------|
| Smooth Serviceberry | <i>Amelanchier laevis</i>  |
| Alternate Dogwood   | <i>Cornus alternifolia</i> |
| Choke Cherry        | <i>Prunus virginiana</i>   |
| American Elderberry | <i>Sambucus canadensis</i> |
| Highbush Cranberry  | <i>Viburnum trilobum</i>   |

### Shrubs

- |                              |                           |
|------------------------------|---------------------------|
| Grey Dogwood                 | <i>Cornus racemosa</i>    |
| Red Osier Dogwood            | <i>Cornus stolonifera</i> |
| Narrowed -Leaved Meadowsweet | <i>Spiraea alba</i>       |
| Wild Black Currant           | <i>Ribes americana</i>    |



Scale: 1:10,000



## Next Steps

- Summer 2023 - Scope EIS as per Environmental Management Guidelines
- Summer 2023 - Field Studies continue
- Fall 2023 - Draft EIS circulated to ECAC
- Winter 2023-2024 - New boardwalk installed
- 2024 - 2026 Ecological Restoration



London  
CANADA



Lambeth Centennial Park Boardwalk Lifecycle Renewal  
7112 Beattie Street, London



# Lambeth Centennial Park Boardwalk Lifecycle Renewal

*Questions*