

# Agenda

## Accessibility Advisory Committee

6th Meeting of the Accessibility Advisory Committee

June 24, 2021, 3:00 PM

Advisory Committee Virtual Meeting - during the COVID-19 Emergency

The City of London is committed to making every effort to provide alternate formats and communication supports for Council, Standing or Advisory Committee meetings and information, upon request. To make a request related to this meeting, please contact [advisorycommittee@london.ca](mailto:advisorycommittee@london.ca).

	Pages
<b>1. Call to Order</b>	
1.1. Disclosures of Pecuniary Interest	
<b>2. Scheduled Items</b>	
2.1. 3:00 PM J. Michaud, Parks Planning and Design - Southwest Optimist Park Playground	2
2.2. 3:15 PM E. Conway, Parks Planning and Design - SoHo Thames Valley Corridor - Natural Playground and Park Redevelopment	8
<b>3. Consent</b>	
3.1. 5th Report of the Accessibility Advisory Committee	23
3.2. Municipal Council resolution from its meeting held on May 25, 2021, with respect to the 4th Report of the Accessibility Advisory Committee	25
3.3. Notice of Planning Application - Zoning By-law Amendment - 755-785 Wonderland Road South (Westmount Mall)	26
<b>4. Items for Discussion</b>	
4.1. Electronic Scooters (E-Scooters)	29
4.2. Accessibility Advisory Committee Terms of Reference	31
<b>5. Adjournment</b>	



London  
CANADA

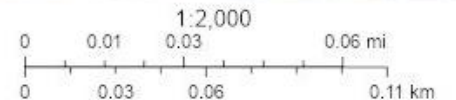
# Southwest Optimist Park Playground

Presentation to ACCAC  
June 24, 2021

# Corporate City Map




6/14/2021 4:31:22 PM



## Southwest Optimist Park, 682 Southdale Rd W



**SOUTHWEST OPTIMIST  
PLAYGROUND**  
15m buffer to Baseball Diamond

 N

Scale: 1:250





**Customer :**  
 OPENSOURCE SOLUTIONS INC.  
 CITY OF LONDON  
 HULLY GULLY, SOUTHDALE PARK

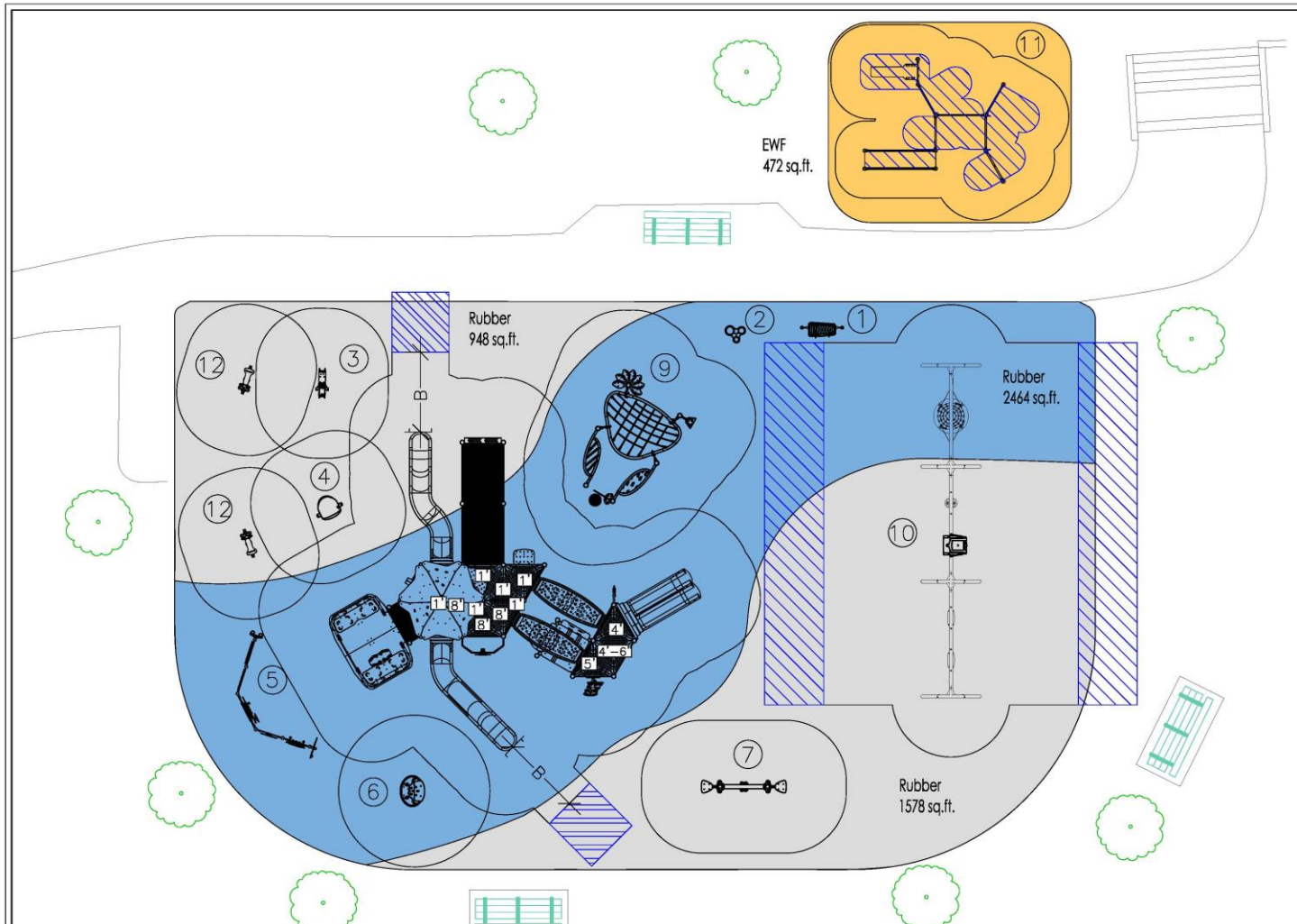
**Product(s)  
 Layout Plan**

**Products :**



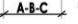
- 1- The xylophone  
L-18033-B
- 2- The bongos  
L-18031
- 3- Snowmobile spring rider  
LA-9205-D
- 4- Rocking nest  
L-19079
- 5- Creative space  
L-15050-A
- 6- Spinning chair  
L-18043
- 7- Teeter totter  
L-13003
- 8- Playstructure  
J3-21200-5HB
- 9- Manta climber  
J6-21003-5B
- 10- 3 Bay Portal Swing  
KSW926-Custom

**Drawn by:** M.J.  
**Date:** 10.05.2021

**Quotation**  
 1068646



**Legend**

-  = No-encroachment zone(s) 6' (1.83m)
-  = Protective surfacing zone(s)
-  = Protective surfacing zone(s) at the lower exit end of the slide(s)  
 (A = 5' or 1.52m, 6' or 1.83m) (F = 7' or 2.13m) (B = 8' and over or 2.44m and over)

11- Combi 4 Pro  
FSW10401

12- Scrambler  
M-13070



London  
CANADA

# SoHo Thames Valley Corridor – Natural Playground and Park Redevelopment

Presentation to ACCAC  
June 24, 2021



- 1 Thames Valley Parkway**
- 3.0m Wide Multi-use Pathway
  - Connection to Neighbourhood ROW's, Existing TVP and Amenities
  - Accommodate Potential Widening of Wellington Street and Bridge

- 2 Urban Park Corridor**
- Between Wellington and Colborne Street
  - Public Gathering Spaces
  - Enhanced Key Entrance Points to Thames Valley Corridor
  - Lighting
  - Improve Key Sight Lines / Views through Potential Selective Removal of Invasive Trees and Shrubs
  - Support Recommendations / Restrictions identified in EIS

- 3 Ecological Enhancements**
- Enhancements to Existing Woodland (per EIS)
  - Enhancements to Woodland Buffers (per EIS)
  - Invasive Species Management
  - Enhancements to Turtle Nesting Habitat
  - Enhancement of Existing Vegetation

- 4 Shared Pedestrian / Vehicular Drive**
- Between Waterloo to Colborne Street
  - 9.0m Wide Shared Corridor is a Flexible Space
  - Supports Programming & Events
  - Single One Way Drive and Parallel Parking
  - Complement Urban Park and TVP
  - Incorporate LID Measures to Direct and Manage Storm Water
  - Key Entrance Points for Pedestrians & Vehicular Access
  - Integrated with Urban Park
  - Lighting

- 5 Midblock Connection**
- 12m Right of Way (two-way)
  - Asphalt Surface
  - Public Municipal Road
  - Native Deciduous Tree Planting
  - Lighting
  - Vehicular and Pedestrian Circulation
  - Access to Phase 1 Development

- 6 District Park**
- Turtle Themed Experiential Playground
  - Low Key Pedestrian Connections to Thames River for Canoe Launch
  - Future Community Gardens
  - Enhancement of Existing Vegetation





District Park – London, ON

## DESIGN DEVELOPMENT

February 4, 2021

---



District Park - London ON

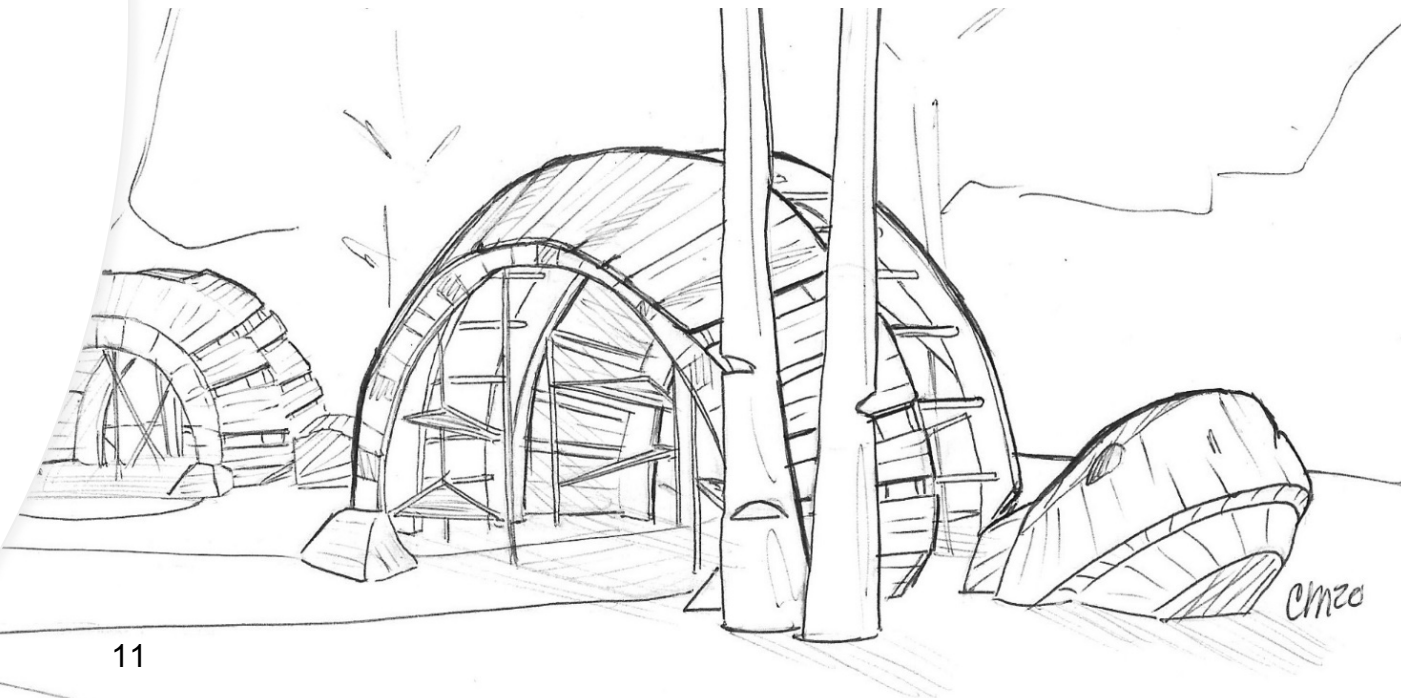
## CONCEPT: TURTLES

The proposed concept combines the focus of accessible play elements with the storytelling inspired by turtle families in the Thames River.

Each turtle offers a different climbing experience. The Mama Turtle offers a more open space for older age groups to explore new heights and to socialize on flex form seats. The Baby Turtle provides a more intimate space for little ones to hang out and challenge their abilities. The Baby Turtle has a transfer bench leading to an interior flex form hammock so children of all abilities can experience the playful elements these turtles offer.

Elements such as notched logs and a log jam slide all play into the narrative of this family of turtles wading through the Thames River. Planting and trees act as the bank to these turtle's river and provide shade to the playground.

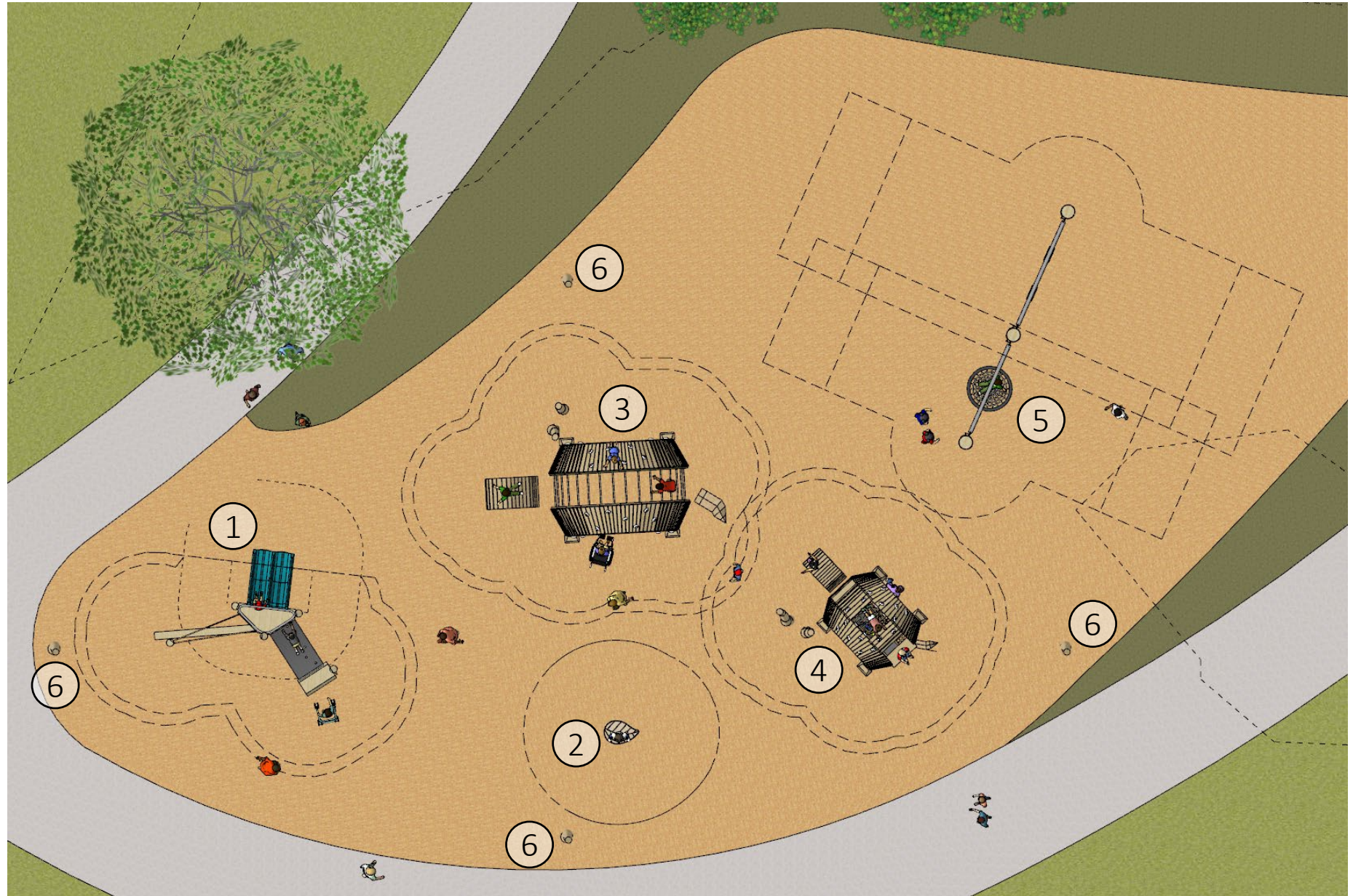
A double bay swing for multiple users is positioned away from the other equipment for safety.



**PLAN VIEW**  
**District Park**

1. Slide Platform 900
2. Wobble Board (Leaf shown)
3. Mama Turtle Sculpture with 2 Notched Posts
4. Baby Turtle Sculpture with 2 Notched Posts
5. Double Bay Swing – 2 Belts, 1 Basket
6. Carved Posts located in cardinal directions

Note: Surfacing is conceptual and is outside of Earthscape's scope.









## COLOUR OPTIONS

### Turtles and Posts

\*only mama turtle shown



Gradient Stain on Posts

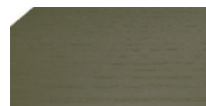
### Proposed Sansin Stains



Moss Green



Acorn



Army Green

### Rock Climbing Hold Colours Options



EARTH TONE  
BROWN  
11-11



EARTH TONE  
MOSS GREEN  
ACH-5



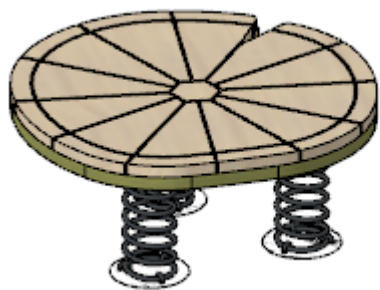
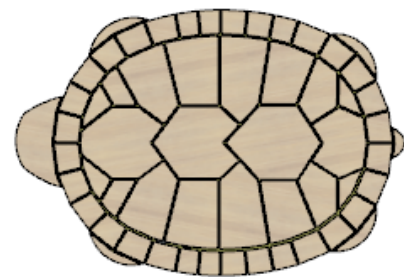
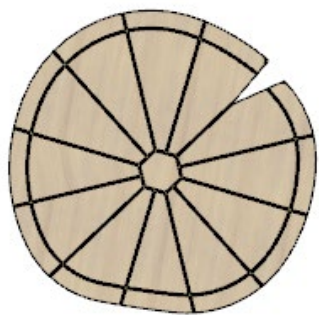
EARTH TONE  
DUNE  
15-06



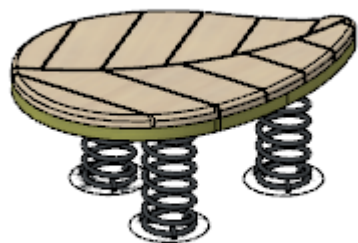
EARTH TONE  
TAUPE  
ACH-7



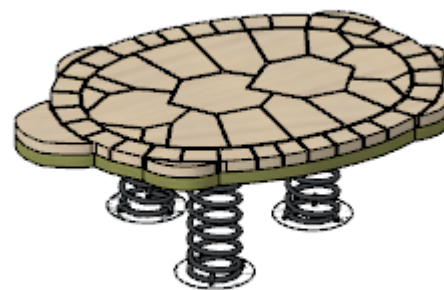
**WOBBLE BOARD**  
**Alternate Shapes**



LILY PAD

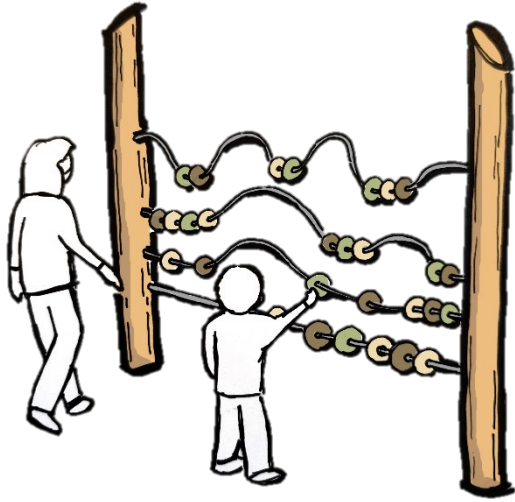


LEAF



TURTLE

# OPTIONAL ITEMS



Abacus Play Panel – Currently in R&D, Final design may vary



Talk Tube



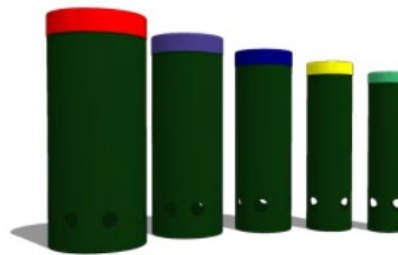
Carving on Robinia Post – Pattern over entire log



Cadence



Lilypad Cymbals -  
Green Anodized



Tuned Drums



DISTRICT PARK  
LONDON, ON

**INCLUSION SCORECARD**

February 4, 2021

# DISTRICT PARK LONDON, ON

## ACCESSIBLE AND INCLUSIVE PLAY

The playground at District Park features an integrated play experience and variety of play opportunities for all ages and abilities. Every proposed piece of play equipment is on an accessible route and all elevated components are accessible by a transfer system (the slide platform and baby turtle). The physical and sensory play opportunities include swinging, climbing, sliding, hanging, balancing, wobbling, gathering, imaginative play.

This proposed design does not include traditional post and deck structures, but there are two transfer stations in the playground. These transfer stations lead to a variety of play opportunities like sliding climbing, and gathering.

### Independent play by users with disabilities

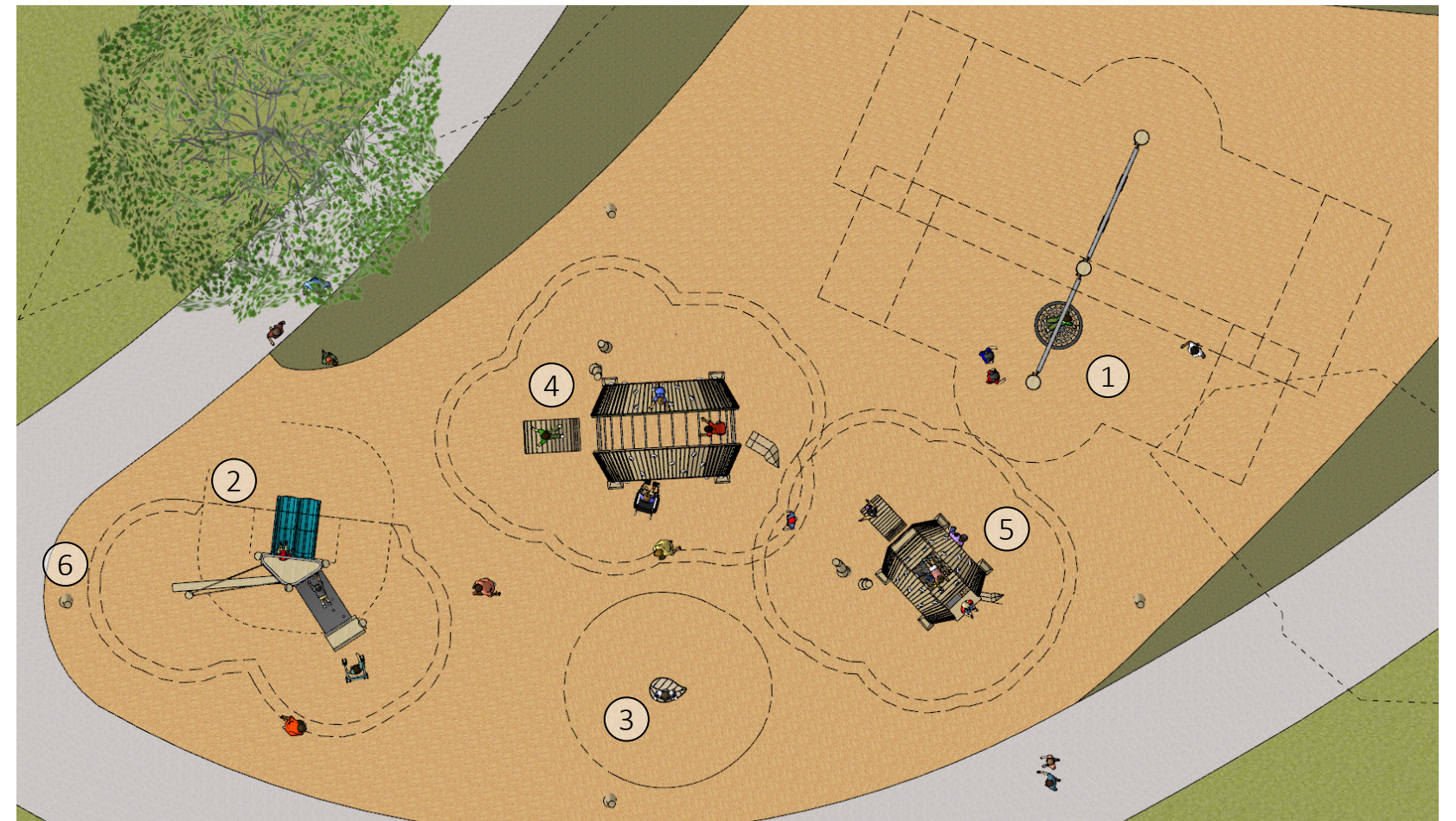
In addition to taking into account mobility-related disabilities, the proposed play components consider other physical and sensory disabilities. A variety of textures are integrated into the playground, including wood (both planed and hand-sanded), metal bars, ropes and nets, flexible textured rubber and plastic (slide). The proposal includes carved robinia posts (details to be determined) that provide additional textural interest. The turtle sculptures include stained wood pieces on the sides for colour-contrast visibility and interest. A range of vestibular stimulation is proposed with swings, a slide, and a wobble board, as well as the planar net inside of the Baby Turtle sculpture that allows for some movement. The two turtle sculptures create semi-enclosures that can be used as a retreat from the more active areas and equipment on the playground. The theming of the equipment provides the opportunity for imaginative play.

## PLAY VALUE, APPEARANCE, AND NOVELTY

The proposed playground design provides a mix of play experiences while highlighting natural materials (the primary construction material is wood). The summary of play types is outlined in the Accessibility Evaluation Chart.

The theme of the turtle family is relevant to the location of this playground located near the Thames River in London. Introducing these creatures as larger-than-life climbable and interactive sculptures can spark creativity and imagination in children. The use of natural materials in this custom design makes this playground distinct and integrated into the site.

Because of the flexibility of the equipment and the range in challenge offered, the playground design has the potential to appeal to a wide variety of users.



## Accessibility Evaluation

No.	Equipment Name	Ground Level Play Component	Elevated Play Component	Accessible	Play Type
1	Two-Bay Swings	1x Basket Swing 2x Belt Swings		Yes, accessible route	Swinging
2	3' Slide Platform	1x Transfer Bench	1x FlexForm Rubber Climber 1x 3' Slide 1x Post and Rope Climber	Yes, accessible route and transfer system	Sliding, balancing, climbing, gathering
3	Wobble Board	1x wobble board		Yes, accessible route	Wobbling/rocking
4	Mama Turtle Sculpture	1x Turtle Head Climber 1x Rung Arch Climber 2x Sling Seat Course 1x Notched Log Pair 1x Turtle Tail Climber		Yes, accessible route	Climbing, gathering, imaginative play
5	Baby Turtle Sculpture	1x Turtle Head Climber 1x Transfer Bench 1x Notched Log Pair	1x Net and FlexForm Rubber Sling	Yes, accessible route and transfer system	Climbing, gathering, wobbling, imaginative play
6	Carved Robinia Posts	4x Carved Posts		Yes, accessible route	Sensory Play



7215 Wellington Rd 86  
Wallenstein, ON N0B 2S0

T. 519.804.6854  
TF. 1.877.269.2972  
F. 519.669.5085

[earthscapeplay.com](http://earthscapeplay.com)

DISTRICT PARK  
LONDON, ON

OVERALL PLAN

# DISTRICT PARK PLAYGROUND

## ESTIMATED PLAYGROUND CAPACITY

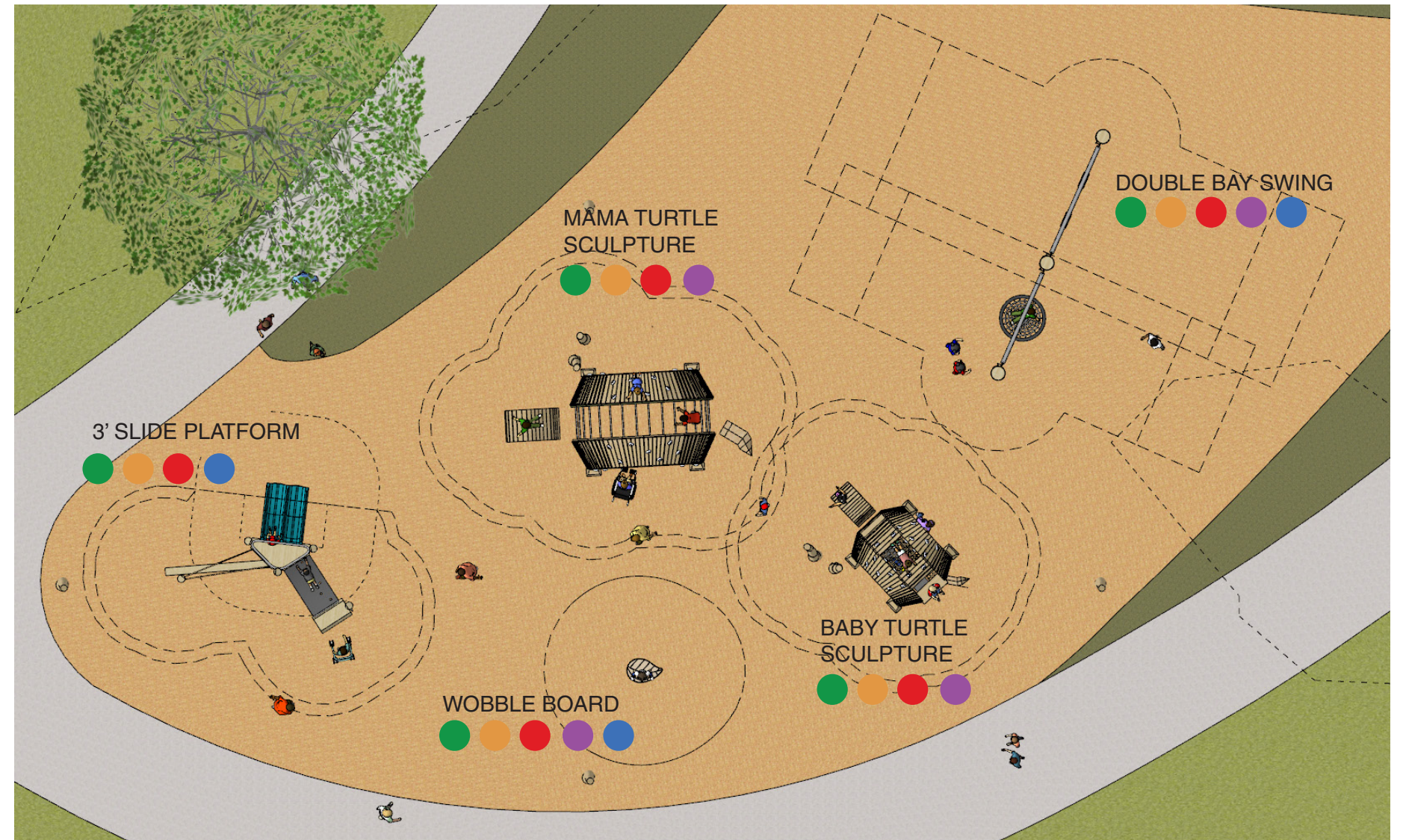
DOUBLE BAY SWINGS  
4-5 users

MAMA TURTLE SCULPTURE  
8-12 users

BABY TURTLE SCULPTURE  
4-8 users

WOBBLE BOARD  
1-2 users

3' SLIDE PLATFORM  
5-8 users



## FIVE ELEMENTS OF INCLUSIVE PLAY

SOCIAL/EMOTIONAL ●●●●●

Pieces that contribute to social and emotional development afford opportunities for social interaction, emotional development, and dramatic play. These elements can be used for play pretending and allow children to create their own play both alone and with others.

PHYSICAL ●●●●●

Pieces that contribute to physical play engage the muscles of the body and encourage the awareness of the body in space. This equipment provides opportunities for the experience of dynamic movement like climbing, swinging, sliding, rolling, spinning, etc

SENSORY ●●●●●

Sensory play engages the senses: sight, sound, smell, and touch. Examples include musical components, textured surfaces and elements, and features that engage light.

COGNITIVE ●●●●●

Equipment that engages cognitive function provides opportunities for creative thinking and risk assessment. An example is non-prescriptive pieces of equipment that give children the freedom and responsibility to use the equipment as they see fit, to work out play for themselves, and to problem-solve as they go.

COMMUNICATION ●●●

Cooperative play means working as a team and using communication as a tool to enhance the play value. Play equipment and environments that encourage collaboration contribute to cooperative play experiences.



7215 Wellington Rd 86  
Wallenstein, ON N0B 2S0

T. 519.804.6854  
TF. 1.877.269.2972  
F. 519.669.5085

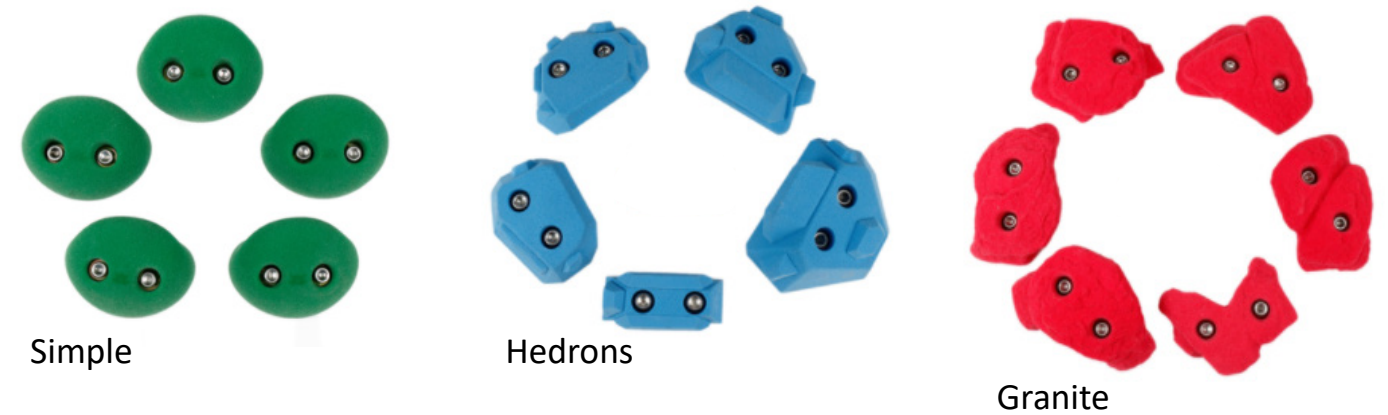
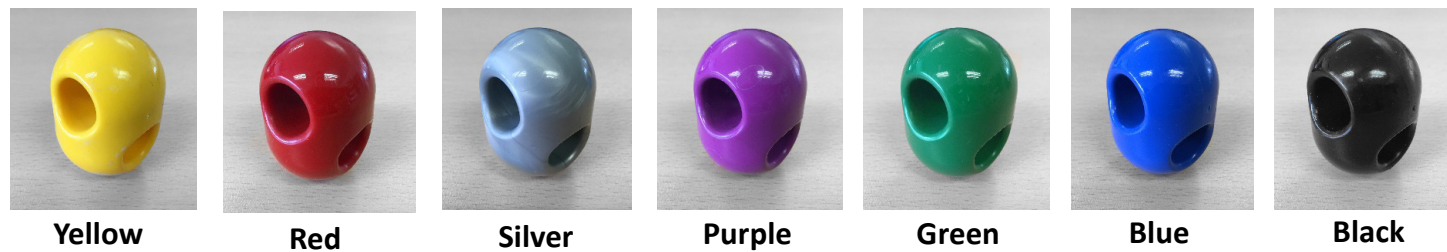
[earthscapeplay.com](http://earthscapeplay.com)

DISTRICT PARK  
LONDON, ON

INCLUSION SCORECARD



**NET CONNECTORS**



7215 Wellington Rd 86  
 Wallenstein, ON N0B 2S0  
 T. 519.804.6854  
 TF. 1.877.269.2972  
 F. 519.669.5085  
 earthscapeplay.com

DISTRICT PARK  
 LONDON, ON

INCLUSION SCORECARD

# Accessibility Advisory Committee Report

5th Meeting of the Accessibility Advisory Committee

May 27, 2021

Advisory Committee Virtual Meeting - during the COVID-19 Emergency

Attendance                      PRESENT: J. Menard (Chair), T. Eadinger, D. Haggerty, N. Judges, A. McGaw, P. Moore, K. Pereyaslavska, B. Quesnel, P. Quesnel, D. Ruston and J. Teeple and J. Bunn (Committee Clerk)

ALSO PRESENT: L. Livingstone; D. Baxter, C. Cooper, A. Husain, D. MacRae, A. Miller, L. Sanders, C. Saunders, J. Skimming, J. Stanford, M. Stone and K. Wood (HDC)

ABSENT: M. Bush and K. Steinmann

The meeting was called to order at 3:01 PM.

## 1. Call to Order

### 1.1 Disclosures of Pecuniary Interest

That it BE NOTED that no pecuniary interests were disclosed.

## 2. Scheduled Items

### 2.1 Affordable Housing

That it BE NOTED that the presentation, as appended to the Agenda, from K. Wood, Housing Development Corporation, with respect to Affordable Housing in London and the project located at 122 Baseline Road West, was received.

### 2.2 E-Scooters and Cargo E-Bikes

That it BE NOTED that the presentation, dated May 27, 2021, as appended to the Agenda, from A. Miller, Coordinator, Transportation Demand Management and the communication, dated May 21, 2021, as appended to the Added Agenda, from C. Schafer, Bird Canada, with respect to E-scooters and Cargo E-Bikes, were received.

### 2.3 Accessibility Update

That it BE NOTED that a verbal update from M. Stone, Supervisor I, Municipal Policy (AODA), with respect to Accessibility, was received.

## 3. Consent

### 3.1 4th Report of the Accessibility Advisory Committee

That it BE NOTED that the 4th Report of the Accessibility Advisory Committee, from its meeting held on April 22, 2021, was received.

3.2 Municipal Council Resolution - Current Advisory Committee Appointments

That it BE NOTED that the Municipal Council resolution, from its meeting held on May 4, 2021, with respect to the Current Advisory Committee Appointments, was received.

3.3 Notice of Public Information Centre for Downtown Loop (Rapid Transit) - Phase 2 Construction

That it BE NOTED that the Notice of Public Information Centre for Downtown Loop (Rapid Transit) Phase 2 Construction, from T. Koza, Division Manager, Major Projects, was received.

3.4 Notice of Planning Application - Official Plan and Zoning By-law Amendments - 2009 Wharncliffe Road South

That it BE NOTED that the Notice of Planning Application, dated May 12, 2021, from C. Maton, Senior Planner, with respect to Official Plan and Zoning By-law Amendments related to the property located at 2009 Wharncliffe Road South, was received.

3.5 Public Meeting Notice - Zoning By-law Amendment - 1634-1656 Hyde Park Road and Other Properties

That it BE NOTED that the Public Meeting Notice, dated May 12, 2021, from B. Debbert, Senior Planner, with respect to a Zoning By-law Amendment related to 1634-1656 Hyde Park Road and other properties, was received.

3.6 Public Meeting Notice - Zoning By-law Amendment - 16 Wethered Street

That it BE NOTED that the Public Meeting Notice, dated May 12, 2021, from A. Riley, Senior Planner, with respect to a Zoning By-law Amendment related to the property located at 16 Wethered Street, was received.

**4. Sub-Committees and Working Groups**

None.

**5. Items for Discussion**

5.1 ACCAC Representative on the Safe Cities London Advisory Committee

That R. Wilcox, Director, Strategy and Innovation BE ADVISED that N. Judges, D. Ruston and K. Pereyaslavskaya have been appointed by the Accessibility Advisory Committee to sit on the Safe Cities London Advisory Committee.

5.2 Advisory Committee Review - Interim Report VI

That it BE NOTED that the staff report, dated May 17, 2021, with respect to the Advisory Committee Review Interim Report VI, was received.

**6. Adjournment**

The meeting adjourned at 5:14 PM.





London  
CANADA

P.O. Box 5035  
300 Dufferin Avenue  
London, ON  
N6A 4L9

May 26, 2021

D. MacRae  
Director, Transportation and Mobility

I hereby certify that the Municipal Council, at its meeting held on May 25, 2021 resolved:

That the following actions be taken with respect to the 4th Report of the Accessibility Advisory Committee, from its meeting held on April 22, 2021:

a) the Municipal Council BE ADVISED that the Accessibility Advisory Committee (ACCAC) continues to support its previous recommendation, from its meeting held on January 28, 2021, with respect to the installation of sidewalks in the City of London; it being noted that the recommendation read as follows:

“That the following actions be taken with respect to the Memo dated January 20, 2021, from the Director, Roads and Transportation, related to the 2021 Neighbourhood Street Reconstruction Projects - Complete Streets Sidewalk Assessments:

i) the Civic Administration BE ADVISED that the Accessibility Advisory Committee (ACCAC) supports the inclusion of sidewalks on both sides of the streets listed within the above-noted Memo except in circumstances that warrant sidewalks on only one side of the street; and,  
ii) the Civic Administration BE ADVISED that the only instances that call for zero sidewalks on a street should be situations where the circumstances are insurmountable for the installation of sidewalks and, in those cases, the ACCAC should be consulted”; it being noted that the ACCAC reviewed the Municipal Council resolution letter, from its meeting held on March 23, 2021, with respect to New Sidewalks in 2021 Infrastructure Reconstruction Projects; and,

b) clauses 1.1, 2.1, 3.1, 3.2, 3.4 and 4.1 BE RECEIVED. (2.1/8/CPSC)

C. Saunders  
City Clerk  
/jb

cc: Chair and Members, Accessibility Advisory Committee

# NOTICE OF PLANNING APPLICATION

## Zoning By-Law Amendment

### 755-785 Wonderland Road South (Westmount Mall)



**File: Z-9356**

**Applicant: McCor Management Inc. c/o Ben McCauley  
(Zelinka/Priamo)**

#### What is Proposed?

Zoning amendment to 1) add business service establishment as a permitted use to permit call centres, customer service field offices or other businesses which operate on a fee or contract basis such as advertising, mailing, building maintenance, employment services and protective services or 2) increase the maximum cap for office space in the zone. Possible change to Zoning By-law Z.-1 **FROM** an Regional Shopping Area Special Provision (RSA2(2)) Zone **TO** another Regional Shopping Area Special Provision (RSA2(\_)) Zone to add business service establishment as an additional permitted use or increase the maximum cap for office space in the zone.

## LEARN MORE & PROVIDE INPUT

Please provide any comments by **June 30, 2021**

Chuck Parker

[cparker@london.ca](mailto:cparker@london.ca)

519-661-CITY (2489) ext. 4648

Planning and Economic Development, City of London, 206 Dundas St., London ON N6A 1G7

File: Z-9356

[london.ca/planapps](https://london.ca/planapps)

You may also discuss any concerns you have with your Ward Councillor:

Paul Van Meerbergen

[pvanmeerbergen@london.ca](mailto:pvanmeerbergen@london.ca)

519-661-CITY (2489) ext. 4010

**If you are a landlord, please post a copy of this notice where your tenants can see it.  
We want to make sure they have a chance to take part.**

# Application Details

## Requested Zoning By-law Amendment

The applicant requested a zoning amendment to add business service establishment as a permitted use to permit call centres, customer service field offices or other businesses which operate on a fee or contract basis such as advertising, mailing, building maintenance, employment services and protective services. The City is reviewing the option of increasing the maximum cap for office space in the zone. Possible change to Zoning By-law Z.-1 **FROM** a Regional Shopping Area Special Provision (RSA2(2)) Zone **TO** another Regional Shopping Area Special Provision (RSA2( ) ) Zone to add business service establishment as an additional permitted use or increase the maximum cap for office space in the zone.

Changes to the currently permitted land uses and development regulations are summarized below.

The Zoning By-law is available at [london.ca](http://london.ca).

### Current Zoning

**Zone:** Regional Shopping Area Special Provision (RSA2(2)) Zone.

**Permitted Uses:** Assembly halls; Automotive uses, restricted; Catalogue stores; Clinics; Commercial parking structures and/or lots; Commercial recreation establishments; Convenience service establishments; Day care centres; Duplicating shops; Financial institutions; Institutions; Liquor, beer and wine stores; Medical/dental offices; Offices; Patient testing centre laboratories; Personal service establishments; Private clubs; Restaurants; Retail stores; Service and repair establishments; Studios; Supermarkets; Taverns; Taxi establishments; Video rental establishments; Place of Entertainment; and, Brewing on premises establishments .

**Special Provision:** Additional Permitted Use: Commercial and Private Schools.

**Height:** 24 metres (79 feet)

[Click here to enter text.](#)

### Requested Zoning

**Zone:** Regional Shopping Area Special Provision (RSA2( ) ) Zone

**Permitted Uses and Special Provision:** Add business service establishment to existing special provision zone

**Height:** 24 metres (79 feet)

The City may also consider increasing the cap for office uses. The Regional Shopping Area (RSA) Zone allows a maximum 10% of total Gross Floor Area (GFA) for office uses.

[Click here to enter text.](#)

## Planning Policies

Any change to the Zoning By-law must conform to the policies of the Official Plan, London's long-range planning document. The subject lands are in the **Shopping Area Place Type** in The London Plan, permitting a broad range of retail, service, office, entertainment, recreational, educational, institutional and residential uses. Mixed use buildings will be encouraged. Uses with large amounts of outdoor storage, large warehouse components, storage of heavy vehicles and/or emitting noise, vibration or dust will not be permitted. Uses that are not compatible with residential and retail uses will not be permitted. The full range of uses described above will not necessarily be permitted on all sites within the Shopping Area Place Type.

Total aggregate office uses will not exceed 2000m<sup>2</sup> (21,528 sq.ft.)

## How Can You Participate in the Planning Process?

You have received this Notice because someone has applied to change the zoning of land located within 120 metres of a property you own, or your landlord has posted the notice of application in your building. The City reviews and makes decisions on such planning applications in accordance with the requirements of the Planning Act. The ways you can participate in the City's planning review and decision-making process are summarized below.

### See More Information

You can review additional information and material about this application by:

- Contacting the City's Planner listed on the first page of this Notice; or

- Viewing the application-specific page at [london.ca/planapps](https://london.ca/planapps)
- Opportunities to view any file materials in-person by appointment can be arranged through the file Planner.

## Reply to this Notice of Application

We are inviting your comments on the requested changes at this time so that we can consider them as we review the application and prepare a report that will include City Planning staff's recommendation to the City's Planning and Environment Committee. Planning considerations usually include such matters as land use, development intensity, and form of development. [Click here to enter text.](#)

## Attend a Future Public Participation Meeting

The Planning and Environment Committee will consider the requested zoning changes on a date that has not yet been scheduled. The City will send you another notice inviting you to attend this meeting, which is required by the Planning Act. You will also be invited to provide your comments at this public participation meeting. A neighbourhood or community association may exist in your area. If it reflects your views on this application, you may wish to select a representative of the association to speak on your behalf at the public participation meeting. Neighbourhood Associations are listed on the [Neighbourgood](#) website. The Planning and Environment Committee will make a recommendation to Council, which will make its decision at a future Council meeting.

## What Are Your Legal Rights?

### Notification of Council Decision

If you wish to be notified of the decision of the City of London on the proposed zoning by-law amendment, you must make a written request to the City Clerk, 300 Dufferin Ave., P.O. Box 5035, London, ON, N6A 4L9, or at [docservices@london.ca](mailto:docservices@london.ca). You will also be notified if you speak to the Planning and Environment Committee at the public meeting about this application and leave your name and address with the Secretary of the Committee.

### Right to Appeal to the Local Planning Appeal Tribunal

If a person or public body would otherwise have an ability to appeal the decision of the Council of the Corporation of the City of London to the Local Planning Appeal Tribunal but the person or public body does not make oral submissions at a public meeting or make written submissions to the City of London before the by-law is passed, the person or public body is not entitled to appeal the decision.

If a person or public body does not make oral submissions at a public meeting or make written submissions to the City of London before the by-law is passed, the person or public body may not be added as a party to the hearing of an appeal before the Local Planning Appeal Tribunal unless, in the opinion of the Tribunal, there are reasonable grounds to do so.

For more information go to <https://olt.gov.on.ca/contact/local-planning-appeal-tribunal/>.

### Notice of Collection of Personal Information

Personal information collected and recorded at the Public Participation Meeting, or through written submissions on this subject, is collected under the authority of the Municipal Act, 2001, as amended, and the Planning Act, 1990 R.S.O. 1990, c.P.13 and will be used by Members of Council and City of London staff in their consideration of this matter. The written submissions, including names and contact information and the associated reports arising from the public participation process, will be made available to the public, including publishing on the City's website. Video recordings of the Public Participation Meeting may also be posted to the City of London's website. Questions about this collection should be referred to Cathy Saunders, City Clerk, 519-661-CITY(2489) ext. 4937.

### Accessibility

Alternative accessible formats or communication supports are available upon request. Please contact [planning@london.ca](mailto:planning@london.ca) or 519-661-4980 for more information.

Given the information that we have received, in addition to both lived experience and the examples set by Canadian municipalities such as Montreal and Toronto, the City of London's Accessibility Advisory Committee is unable to support the City's participation in a pilot project allowing electronic scooters (e-scooters) in public.

While the majority of our concerns are specific to challenges that these scooters pose to members of the accessibility community, they are complemented by a lack of proven benefit that would set the foundation for further discussion. The supposed environmental benefits, as proven in a North Carolina study looking at e-scooter user behaviour, are spurious at best. These e-scooters are not being used by those forsaking vehicles, but rather are generally used by those who normally walk or bike to destinations -- both of which are far more ecologically responsible forms of transportation.

And we have yet to broach the topics of injury liability, potential for theft and the related replacement costs, and additional enforcement costs that the City would be forced to absorb to meet even the minimum safety and accessibility thresholds we would expect.

So with little to no benefit, yet so much risk, we see no reason to move forward with this project. As per the City of London's Diversity and Inclusion Policy states, the City is committed to "removing system barriers to accessibility and access as experienced by our community by listening and responding to the voices of those who are marginalized."

Our "marginalized" community is expressing these concerns in advance in order to prevent the establishment of a system barrier, and we hope that prevention carries just as much weight as after-the-fact remediation efforts.

Our concerns are as follows:

- E-scooters are often discarded in locations away from their designated areas. As staff have suggested that these scooters are intended for last-kilometer traffic, one could make a reasonable assumption that they will be left on sidewalks and doorways that represent the end of that destination. That "reasonable assumption" is further reinforced by the examples of cities like Montreal, where pilot projects were ended due to this behaviour.
- Discarded e-scooters pose a risk to those with visual challenges, mobility challenges, and who use wheelchairs. Unexpected obstacles on the sidewalk, boulevard, or even along the street can pose trip-and-fall hazards for people with visual challenges, and they can effectively block people in wheelchairs, people pushing strollers, or those using walkers from progressing down pedestrian walkways.
- E-scooters are silent and pose a risk to those with visual and auditory challenges. If ridden on the sidewalk, they are an unexpected vehicle on a pedestrian-first pathway.

The Accessibility Advisory Committee fully supports the development of a multi-modal transportation model for the City of London. We have supported the integration of safely designed bike lanes, but we feel e-scooters have proven to be problematic in other communities and we encourage you to follow the example set by the City of Toronto in not voting to support a pilot project.

If the Toronto example does not suffice, we encourage you to learn from the experiences of other communities, such as Montreal, which shut down their projects specifically as a result of the manifestation of the concerns that we've expressed.

We appreciate that the lobbyist for the vendor has suggested that these concerns can be alleviated through enforcement and technological restrictions that would prevent these devices from accessing sidewalks. But we question at what cost? Who bears both the additional upfront costs and the ongoing residual costs (e.g. enforcement officers? Technological maintenance to ensure that "no-ride" zones are maintained?)

We feel that the risks, both in terms of accessibility, liability, and long-term costs far outweigh any perceived benefit (which, at this point, is restricted to some nebulous "cool factor" for the downtown, as the environmental benefits are simply non-existent -- especially when one factors in the environmental cost of producing these scooters, and, ultimately, maintaining and replacing them.)

It is our hope that the Civic Works Committee and/or Municipal Council rejects the opportunity to participate in this pilot project.

Signed,

The City of London's Accessibility Advisory Committee  
Letter endorsed at its June 24, 2021 meeting.

The Accessibility Advisory Committee has reviewed the proposed Terms of Reference and has requested the following reinstatements and additions. Some of the items that have been proposed to be removed negatively impact the committee in that they prevent us from fully embracing the scope of the Committee's mandate.

As well, we have included language in the role, mandate, and duties section to reflect the need for accessibility to be looked upon by the "Corporation" as reflective of ableist structures and policies, to better align the committee and the language with the desired inclusive nature of the City's other documentation, including but not limited to, its Diversity and Inclusion policy.

This version is presented as an example of desired edits to the current state. However, we feel that council documentation, as a whole, should embrace Plain Language principles and adhere to the concept of universal accessibility. As it stands, this document scores a 12.8 on the Flesh Reading Ease Scale. The desired score for universal accessibility is 60.

At 12.8, this score is aligned to college graduates and is described as "very difficult to read. Best understood by university graduates." It is also at the high-end of that difficulty scale, on the cusp of Professional -- described as "Extremely difficult to read. Best understood by university graduates."

The Government of Canada in its Policy on Communications and Federal Identity embraces a move to Plain Language communication. Medical and legal organizations throughout North America have been moving towards embracing Plain Language to ensure that content is accessible to all users and that linguistic barriers do not prevent people from accessing and understanding content. And the City of London's communications team has embraced Plain Language in all of its web content.

Universal accessibility is not targeted towards the accessibility community. In fact, universal accessibility supports the needs of all users -- not only those with educational barriers, but also for our growing community for whom English may not be their first language. Universal accessibility promotes writing content in a manner that ensures comprehension, and we strongly recommend that all City of London documentation should be written in a way to promote universal accessibility.

With that, our minimum threshold edits are presented in bold, as follows:

## APPENDIX A

### Terms of Reference Accessibility Advisory Committee

#### Role

The role of an advisory committee is to provide recommendations, advice and information to the Municipal Council on those specialized matters which relate to the purpose of the advisory committee **[edit reinstate the following “, to facilitate public input to City Council on programs and ideas and to assist in enhancing the quality of life of the community.”]**

The establishment and role of the Accessibility Advisory Committee is mandated by the Accessibility for Ontarians with Disabilities Act, 2005, SO 2005, c 11.  
Definitions (AODA 2005)

“the organizations” refers to:

- the City of London and may refer to the City's Agencies, Boards and Commissions, to be determined subject to the Ontarians with Disabilities Act, 2001 (ODA 2001) and the Accessibility for Ontarians with Disabilities Act, 2005 (AODA 2005) and its regulations. It is intended that the Accessibility Advisory Committee shall advise comprehensively upon issues **[add: “that promote the dismantling of existing ableist structures and work to prevent the creation of new ableist structures towards establishing” (remove “for)]** a barrier-free London which may entail forwarding recommendations to the City's Agencies, Boards and Commissions and/or other outside organizations;

“barrier” means:

- anything that prevents a person with a disability from fully participating in all aspects of society because of their disability, including a physical barrier, an architectural barrier, an information or communication barrier, an attitudinal barrier, a technological barrier, a policy or a practice (“obstacle”);

“disability” means:

- any degree of physical disability, infirmity, malformation or disfigurement that is caused by bodily injury, birth defect or illness and, without limiting the generality of the foregoing, includes diabetes mellitus, epilepsy, a brain injury, any degree of paralysis, amputation, lack of physical co-ordination, blindness or visual impediment, deafness or hearing impediment, muteness or speech impediment, or physical reliance on a guide dog or other animal or on a wheelchair or other remedial appliance or device;
- a condition of mental impairment or a developmental disability;
- a learning disability, or a dysfunction in one or more of the processes involved in understanding or using symbols or spoken language;
- a mental disorder; or
- an injury or disability for which benefits were claimed or received under the insurance plan established under the Workplace Safety and Insurance Act, 1997; (“handicap”).

Mandate

The Accessibility Advisory Committee (ACCAC) shall advise and assist “the organizations” in **[add: “working towards dismantling existing ableist structures, preventing the creation of new ableist structures, and]** promoting and facilitating a barrier-free London for citizens of all abilities (universal accessibility). This aim shall be achieved through the review of municipal policies, programs and services, which may include the development of means by which an awareness and understanding of matters of concern can be brought forward and the identification, removal and prevention of barriers faced by persons with disabilities, and any other functions prescribed under the Ontarians with Disabilities Act,



2001 (ODA 2001), Accessibility for Ontarians with Disabilities Act, 2005 (AODA 2005) and regulations.

#### APPENDIX A

The Accessibility Advisory Committee reports to Municipal Council, through the Community and Protective Services Committee. The Accessibility Advisory Committee is responsible for the following: Duties Required by the Accessibility for Ontarians with Disabilities Act, 2005 (AODA 2005)

- A. participating in the development and/or refinement of the City of London's Multi- Year Accessibility Plan, which outlines the City of London's strategy to prevent and remove barriers for persons with disabilities;
- B. advising the City of London on the implementation and effectiveness of the City's Multi-Year Accessibility Plan to ensure that it addresses the identification, removal and prevention of barriers to persons with disabilities in the City of London's by-laws, and all its policies, programs, practices and services;
- C. selecting and reviewing in a timely manner the site plans and drawings for new development, described in section 41 of the Planning Act;
- D. reviewing and monitoring existing and proposed procurement policies of the City of London for the purpose of providing advice with respect to the accessibility for persons with disabilities to the goods or services being procured;
- E. reviewing access for persons with disabilities to buildings, structures and premises (or parts thereof) that the City purchases, constructs, significantly renovates, leases, or funds for compliance with the City of London's Accessibility Design Standards (FADS);
- F. Consulting on specific matters as prescribed under the Accessibility for Ontarians with Disabilities Act, 2005 (AODA 2005)

#### Other Duties

- G. advising "the organizations" on issues and concerns (barriers) faced by persons with disabilities and the means by which "the organizations" may work towards the elimination of these barriers;
- H. annually reviewing and recommending changes to The City of London's Facility Accessibility Design Standards (FADS) and other applicable and related policies including, but not limited to, sidewalk design, traffic signalization, public works etc.;
- I. supporting, encouraging and being an ongoing resource to "the organizations", individuals, agencies and the business community by educating and building community awareness about measures (such as the availability of employment, leisure and educational choices) for improving the quality of life for persons with disabilities, through the removal of physical barriers, incorporation of universal design standards, and education to overcome attitudinal barriers to make London an accessible, livable City for all people.

#### [Reinstate:

- **i) advising "the organizations" on universal transportation issues and how to enable barrier-free access for persons with disabilities. Issues related to**

**universally accessible forms of transportation, conventional transit and taxi services, specialized services such as Para-transit, sidewalk design (curb cuts), traffic signalization, etc. shall be considered;**

- **(ii) advising, consulting and reporting findings and recommendations to “the organizations” on matters related to the status of persons with disabilities. The Committee shall be informed on matters of government policy (municipal, provincial or federal) affecting persons with disabilities and shall inform “the organizations” about the impact of these policies on London;**
- **(iii) reviewing and making recommendations on barriers faced by persons with disabilities to existing facilities owned, leased, or operated (in full or part) by the City of London;**
- **(iv) reviewing public works policies and standards (sidewalks, snow removal, etc.) and advising “the organizations” on the accessibility for persons with disabilities;**
- **(iv) coordinating the immediate and ongoing dissemination of information in various formats to the disabled community, etc. and to the public at large regarding issues faced by persons with all types of disabilities and regarding the work undertaken by the Accessibility Advisory Committee; and**

#### **Add**

- **v) in accordance with the principles of the City’s Diversity and Inclusion Policy, work with “the organizations” to identify ableist structures, policies, and behaviours, and work towards both dismantling existing barriers and preventing the introduction of new ableist policies and structures.]**

#### Composition

#### Voting Members

A maximum of thirteen members consisting of:

- a majority of the members (minimum 7) shall be persons with disabilities as required under the Accessibility for Ontarians with Disabilities Act, 2005 (AODA 2005). The Committee members shall be representative of gender, ethnicity and diverse types of disabilities wherever possible; and
- a maximum of six additional members, as follows:
  - one member (parent) representing children with disabilities; and
  - five members-at-large, interested in issues related to persons with disabilities

it being noted that these additional members may also have a disability.

#### Non-Voting Resource Group

Non-Voting and Resource members may be engaged as the committee deems necessary.

#### APPENDIX A

#### Staff Resources

Staff resources will be allocated as required, however the specific liaison shall be the Supervisor, Municipal Policy (AODA), or designate.

#### Sub-committees and Working Groups

The Advisory Committee may form sub-committees and working groups as may be necessary to address specific issues; it being noted that the City Clerk's office does not provide resources or support to these groups. These sub-committees and working groups shall draw upon members from the Advisory Committee as well as outside resource members as deemed necessary. The Chair of a sub-committee and/or working group shall be a voting member of the Advisory Committee.

#### Term of Office

Appointments to advisory committees shall be determined by the Municipal Council.

#### Conduct

The conduct of Advisory Committee members shall be in keeping with Council Policy.

#### Meetings

Meetings shall be once monthly at a date and time set by the City Clerk in consultation with the advisory committee. Length of meetings shall vary depending on the agenda. Meetings of working groups that have been formed by the Advisory Committee may meet at any time and at any location and are in addition to the regular meetings of the Advisory Committee.