

# Accessibility Advisory Committee

## Report

The 11th Meeting of the Accessibility Advisory Committee  
November 28, 2019  
Committee Room #4

Attendance                   PRESENT: J. Menard (Acting Chair), M. Dawthorne, T. Eadinger, N. Judges, G. LaHay, P. Moore, D. Ruston and K. Steinmann and J. Bunn (Clerk)

ABSENT: A. Bueschleb, J. Madden and P. Quesnel

ALSO PRESENT: K. Husain, H. Klausnitzer, J. Michaud and M. Stone

The meeting was called to order at 3:00 PM.

### 1. Call to Order

#### 1.1 Disclosures of Pecuniary Interest

That it BE NOTED that no pecuniary interests were disclosed.

### 2. Scheduled Items

#### 2.1 East Lions Park/Community Centre Construction and Reconstruction of Churchill Avenue and Winnipeg Boulevard

That it BE NOTED that the attached presentation from S. Shannon, Dillon Consulting Limited and J. Michaud, Landscape Architect, with respect to the East Lions Park and Community Centre construction and the reconstruction of Churchill Avenue and Winnipeg Boulevard, was received.

#### 2.2 Emergency Management for Persons with Disabilities

That it BE NOTED that the attached presentation from H. Klausnitzer, Manager, Emergency Operations Centre, with respect to emergency management for persons with disabilities, was received.

### 3. Consent

#### 3.1 10th Report of the Accessibility Advisory Committee

That it BE NOTED that the 10th Report of the Accessibility Advisory Committee, from its meeting held on October 24, 2019, was received.

#### 3.2 Public Meeting Notice - Zoning By-law Amendment - 1395 Riverbend Road

That it BE NOTED that the Public Meeting Notice, dated November 13, 2019, from L. Mottram, Senior Planner, with respect to a Zoning By-law Amendment related to the property located at 1395 Riverbend Road, was received.

#### 3.3 Letter of Resignation - J. Wilson

That it BE NOTED that the letter of resignation, as appended to the agenda, from J. Wilson, was received.

3.4 Letter of Resignation - G. Ashford-Smith

That it BE NOTED that the letter of resignation, dated October 24, 2019, from G. Ashford-Smith, was received.

3.5 (ADDED) Notice of Planning Application - Official Plan Amendment - City-Wide Urban Design Guidelines

That the Notice of Planning Application, dated November 21, 2019, from A. Lockwood, Urban Designer, with respect to an Official Plan Amendment related to City-Wide Urban Design Guidelines, BE REFERRED to the next meeting of the Accessibility Advisory Committee Sub-Committee meeting for review.

**4. Sub-Committees and Working Groups**

None.

**5. Items for Discussion**

5.1 Barrier Free Sidewalks/Petition Update

That it BE NOTED that the communication dated November 20, 2019, from G. LaHay, with respect to barrier free sidewalks, was received.

5.2 Accessibility Advisory Committee 2020 Work Plan - Draft

That the draft Accessibility Advisory Committee (ACCAC) 2019 Work Plan, as appended to the agenda, BE REFERRED to the ACCAC Sub-Committee for review and a report back to the January 2020 meeting of the ACCAC.

5.3 ACCAC Brochures

That it BE NOTED that the Accessibility Advisory Committee (ACCAC) held a general discussion with respect to the distribution of various ACCAC brochures.

5.4 City of London Budget

That delegation status for the Chair of the Accessibility Advisory Committee, or designate, to speak at the January 23, 2020 Strategic Priorities and Policy Committee meeting with respect to the City of London Budget, BE REQUESTED.

5.5 Next Meeting Date and Time

That the start time of the January 23, 2020 Accessibility Advisory Committee meeting BE MOVED to 2:00 PM.

5.6 (ADDED) Community Diversity and Inclusion Strategy - Alternate Representative

That the Civic Administration BE ADVISED that if the current Accessibility Advisory Committee (ACCAC) representative at the Community Diversity and Inclusion Strategy Leadership Table cannot attend a meeting, the Chair or Vice-Chair of the ACCAC will attend in their place.

**6. Adjournment**

The meeting adjourned at 4:30 PM.



# Churchill Avenue and Winnipeg Boulevard Reconstruction

Accessibility Advisory Committee Presentation  
November 28, 2019



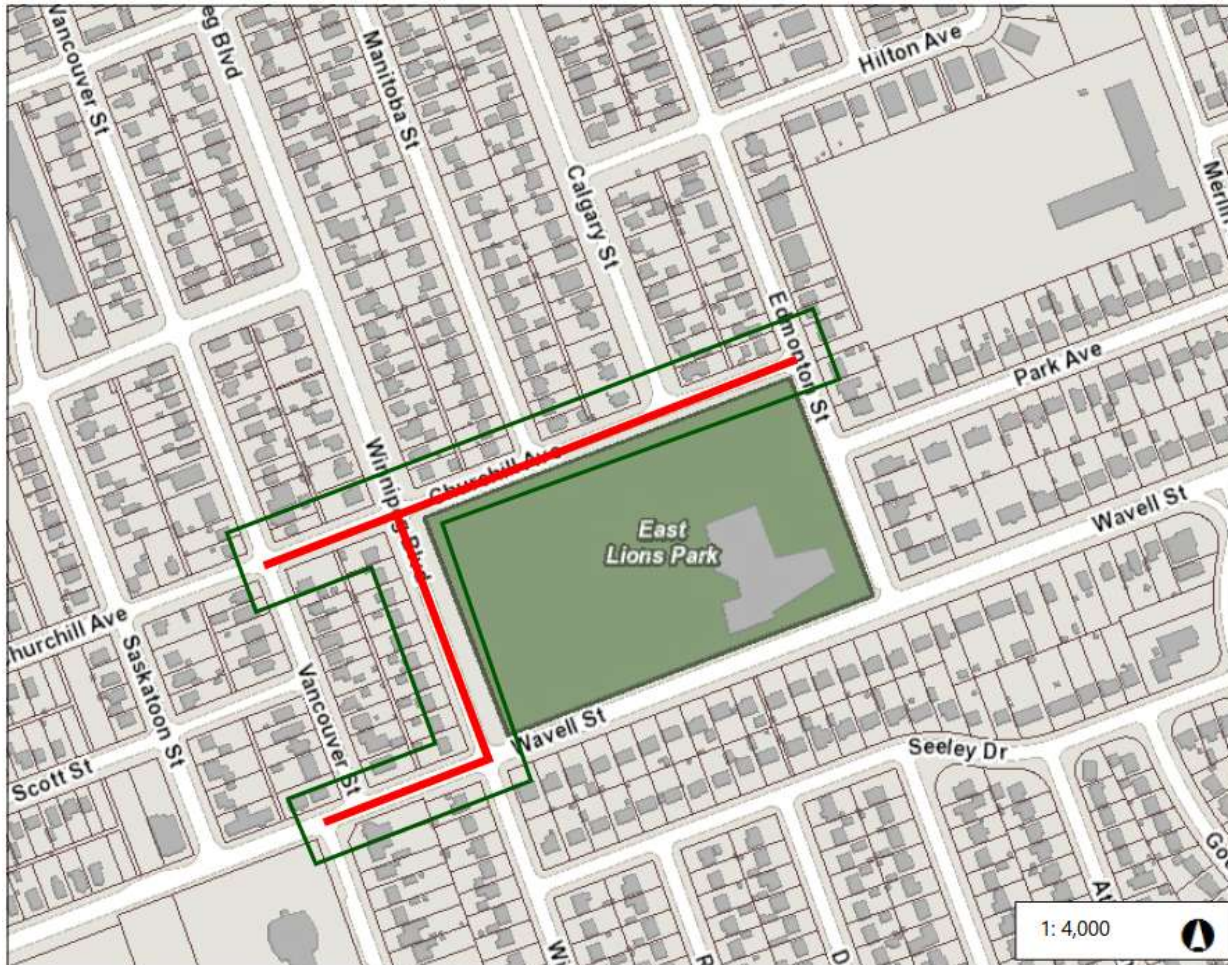
London  
CANADA

# AGENDA



- 1. EAST LIONS PARK PROJECT UPDATE**
- 2. ROAD PROJECT OVERVIEW**
- 3. RECOMMENDED DESIGN**
- 4. NEXT STEPS**
- 5. QUESTIONS**

# PROJECT OVERVIEW



## Legend

-  Project Extents
-  Street Limits

The Project Extents includes the following:

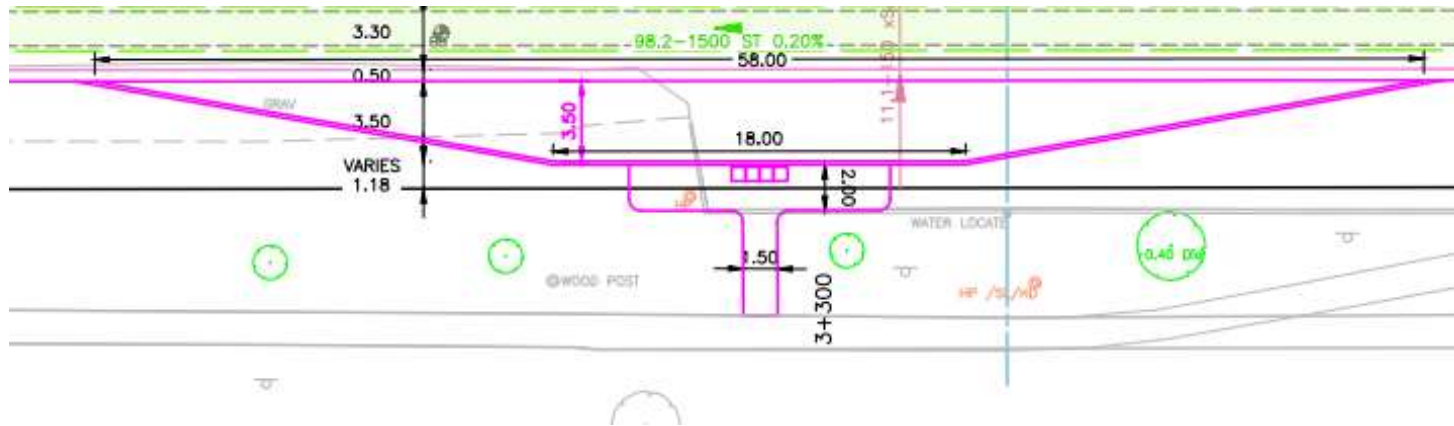
- Wavell Street – Vancouver Street to Winnipeg Boulevard
- Winnipeg Boulevard – Churchill Avenue to Wavell Street
- Churchill Avenue – Vancouver Street to Edmonton Street

Intersections included are:

- Wavell @ Vancouver, Winnipeg
- Winnipeg @ Churchill
- Churchill @ Vancouver, Manitoba, Calgary, Edmonton



# ACCESSIBILITY DROP OFF AREA/PARKING



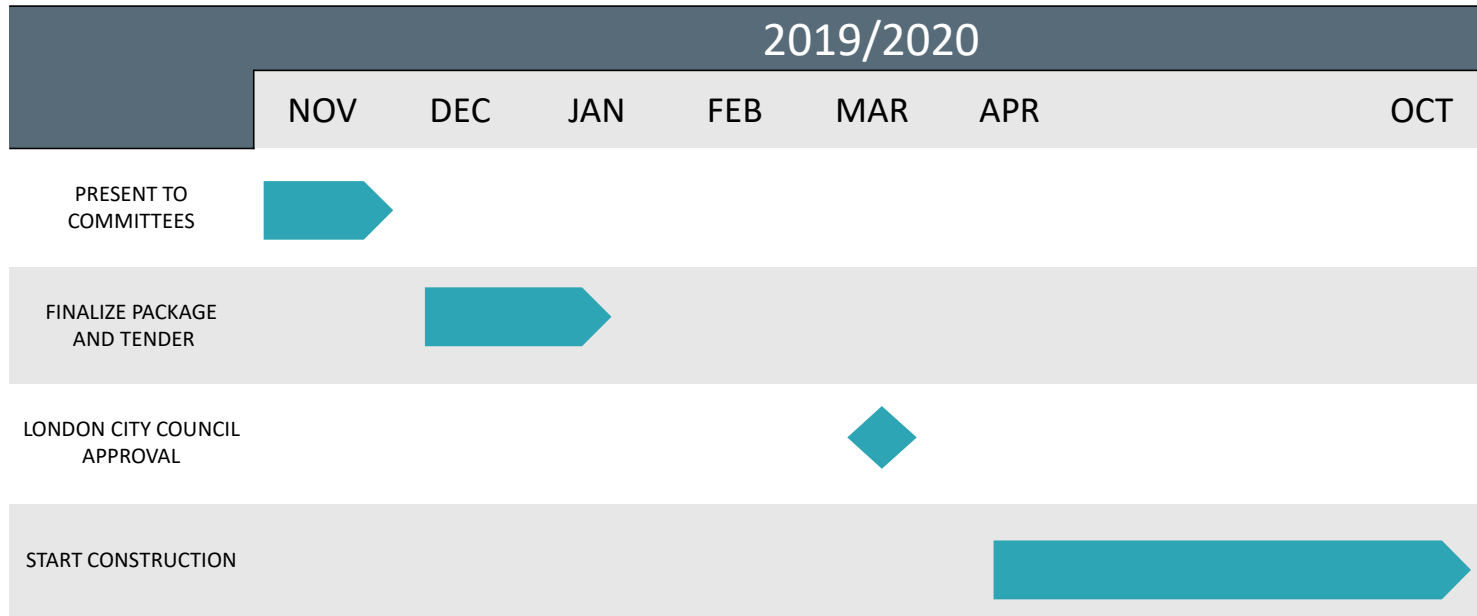


# ACCESSIBILITY DROP OFF AREA/PARKING



November 28, 2019

# NEXT STEPS



**THANK YOU FOR  
THE  
OPPORTUNITY TO  
PRESENT**



# Questions?

November 28, 2019

# EAST LIONS PARK



## LEGEND

1. TENNIS COURT
2. PICKLEBALL COURTS
3. BASKETBALL & ICE RINK
4. SOCCER FIELD
5. PING PONG TABLE
6. RAIN GARDEN
7. LOUNGE CHAIRS
8. BOARDWALK & LOOKOUT
9. BERM
10. TERRACED SEATING
11. PLAYER BENCHES
12. PICNIC TABLES
13. PLAYGROUND
14. ART SCULPTURE
15. BUS STOP
16. PEDESTRIAN CROSSING
17. FIELD LIGHTING

*Lights to be turned off by 11pm  
Please note: this is a conceptual design.  
Final locations may vary.*

### CONTACT INFORMATION

Eric Conway, Project Coordinator  
519-661-2489 ext. 4288  
elconway@london.ca

CONCEPTUAL DESIGN BY:

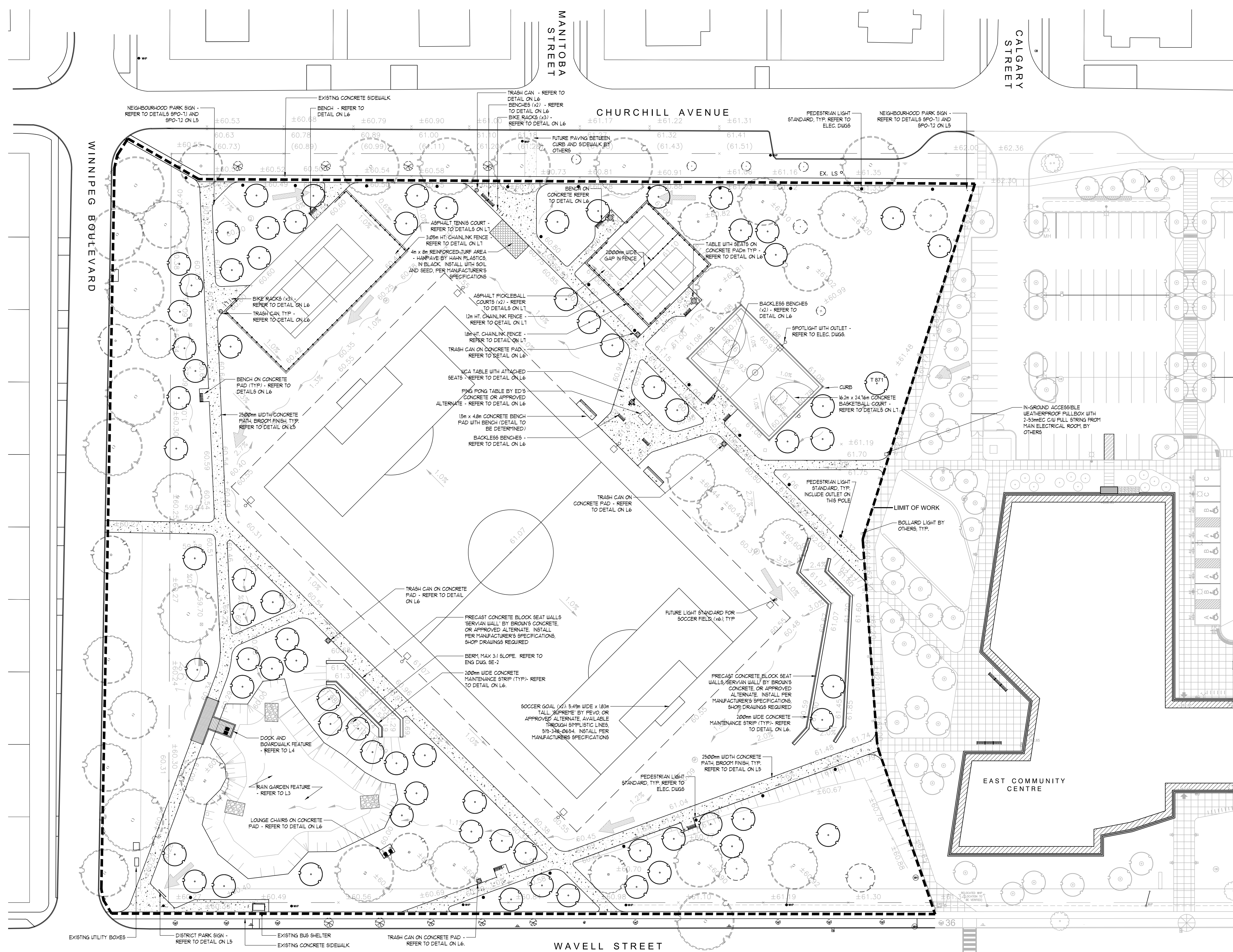
**MJMA &** **a+LINK**  
architecture inc.  
preserve • create • sustain

DETAILED DESIGN BY:

RON KOUDYS  
LANDSCAPE  
ARCHITECTS

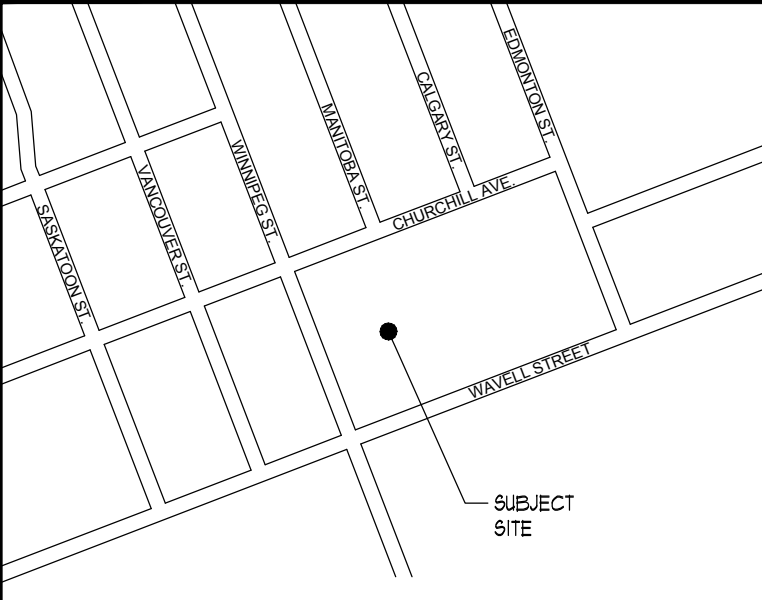


London  
CANADA



**LEGEND**

- PROPOSED DECIDUOUS TREES
- EXISTING DECIDUOUS TREES TO REMAIN
- PROPOSED CONCRETE PAVING
- PROPOSED SEAT / RETAINING WALL
- PROPOSED BENCH SEE DETAIL
- PROPOSED TRASH RECEPTACLE SEE DETAIL
- PROPOSED BIKE RACKS SEE DETAIL



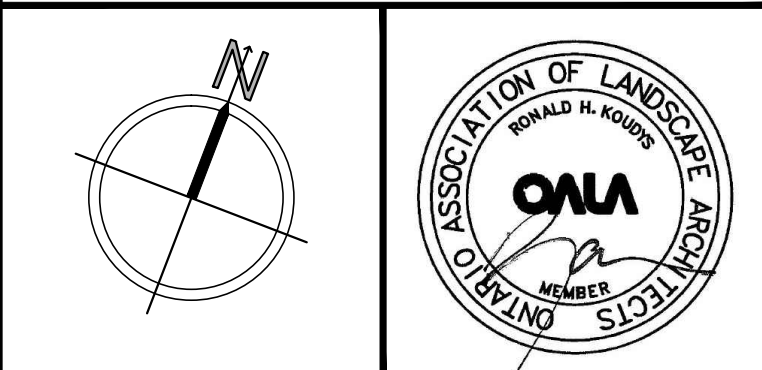
ALL DRAWINGS REMAIN THE PROPERTY OF THE LANDSCAPE ARCHITECT AND SHALL NOT BE REPRODUCED OR REUSED WITHOUT THE LANDSCAPE ARCHITECTS WRITTEN PERMISSION.

THIS DRAWING SHALL NOT BE USED FOR CONSTRUCTION OR TENDER PURPOSES UNLESS SIGNED AND DATED BY RONALD H. KOUDYS, O.A.L.A. C.S.L.A., LANDSCAPE ARCHITECT, LONDON, ONTARIO (519) 667-3322.

Ronald H. Koudys, O.A.L.A. C.S.L.A. SEPT. 24, 2019  
DATE

DATE	DESCRIPTION	No.
SEPT. 24, 2019	ISSUED FOR CONSTRUCTION	10.
JUNE 5, 2019	ISSUED FOR TENDER	9.
MAY 23, 2019	ISSUED FOR REVIEW	8.
MAY 2, 2019	30% DD SUBMISSION	7.
MAR. 14, 2019	ISSUED FOR REVIEW	6.
MAR. 5, 2019	ISSUED FOR REVIEW	5.
FEB. 21, 2019	60% SUBMISSION - FINAL	4.
FEB. 11, 2019	60% SUBMISSION	3.
JAN. 18, 2019	ISSUED FOR REVIEW	2.
DEC. 19, 2018	ISSUED FOR REVIEW	1.

PLOTTING INFORMATION:  
 PLOTTED DATE - JUNE 5, 2019  
 PLOTTED SCALE - 1/1



PROJECT TITLE:  
**EAST LIONS PARK**  
 1731 CHURCHILL AVENUE  
 LONDON, ONTARIO

DRAWING TITLE:  
**SITE PLAN**

DATE: NOVEMBER 2018	SCALE: AS NOTED	DRAWING No. <b>L-1</b>
DRAWN: RKL/A Inc.	CHECKED BY: RHK	
PROJECT No. 18-249 LT		

**SITE PLAN**  
SCALE = 1:400



## London's Emergency Management Program




Special Needs




## Presentation Overview

- The City of London Emergency Response Plan
- The top Hazards for the City of London
- Personal Preparedness
- Alert London (Emergency Notification System)
- Getting Prepared



## City of London Emergency Response Plan

- Authority (approved by By-law A.-7495-21)
- All hazard approach
- Levels of emergency (1 to 3)
- Process for declaring/terminating an emergency
- Notification and activation of the Plan
- Roles and Responsibilities of the Policy Group/EOC staff and the Incident Commander
- Responsibilities of EOC Advisors
- Response structure (the Incident Management System)



## Are You Prepared?

Have you ever thought about how to prepare for an emergency?

How would you:

- Look after your family for 72 hours
- Cope without power or water
- Contact your family and receive information



## Getting Prepared

Learn the three steps to getting prepared:

- Know the risks
- Make a plan
- Make an emergency kit



## Common Misconceptions

- Most emergencies are short lived
- I won't ever have to deal with an emergency where I live
- There are lots of emergencies I just can't prepare for
- Preparing takes too much time



## The Top Hazards

Can anyone guess what the top hazards are for the City of London?



## The Top Hazards

- Tornado (severe summer storm)
- Hazardous material incident (transportation incident)
- Critical infrastructure failure (e.g. extended power outage, phone system failures)
- Explosion/fire
- Freezing rain/ice storm (severe winter storm)
- Hazardous material incident (fixed site)
- Transportation emergency (rail)
- Transportation emergency (road)
- Flood (urban)





## Your Family's Emergency Preparedness

- Have a family meeting
- Consider everyone's needs including yourself
- Utilize the City of London Emergency Preparedness Guide as a tool
- Create a 72 hour emergency kit
- Rehearse your plan
- Ensure that you have copies of important documents and your plan
- Choose an out-of-town contact person
- Become familiar with the City of London's emergency management program



## A Home Escape Plan

- Create an home escape plan
- Identify a primary and alternate meeting places away from your home
- Record your emergency contact information
- Select an out-of-area contact person to relay messages
- Take an inventory of household possessions and place it in a safety deposit box
- Make plans for your pets (e.g. boarding)



## Prepare an Evacuation Plan

- Make arrangements ahead of time with relatives/friends who would be willing to provide you with temporary lodging in the event of an evacuation
- If you are directed to evacuate, take your emergency kit with you if safe to do so
- Carefully follow the instructions given by emergency authorities
- Stick to the evacuation route you have been told to follow and report to the reception centre
- When you arrive, register with the reception centre staff




## Shelter-in-Place

Depending on the emergency, you may be directed by public safety officials to shelter-in-place in your home or workplace


Be Prepared:


- Identify a room that will be your safe room
- Prepare a 72 hour kit. You may want to keep the kit in your safe room
- Include materials that will keep you safe room air tight (duct tape, towels, pre-cut pieces of plastic sheeting)




 **Fast Fact**


- Although the majority of Canadians believe that having an emergency plan and emergency kit are important, only a small minority have actually created them



 **72 Hour Emergency Kit**

- 4 litres per person per day
- Non-perishable food
- Manual can opener
- First aid kit
- Flashlight, radio and spare batteries
- Personal hygiene supplies (e.g. tooth brush)
- Money (include small bills and change)
- Copies of important documents
- Emergency contact information
- Grab and go bag with medication, prescriptions, medical documents
- **At Work, Facility emergency kits**



 **Vehicle Emergency Kit**

- Water
- Emergency food supply (e.g. energy bars)
- Seat belt cutter and window breaking tool
- First aid kit
- Flashlight
- Seasonal clothing (mitts, scarf, boots, socks)
- Seasonal supplies (e.g. scrapper, snowbrush, shovel, anti-freeze)
- Small bills and change
- Fire extinguisher

 **Pet Emergency Kit**

- Food, water bowls, paper towels, can opener
- Blanket, small toy and treats, Leash
- Pet carrier for transportation
- Current photo of your pet (in the event that your pet gets lost)
- Up-to-date ID tags with your contact number
- Copy of pet license
- Medication
- Copies of vaccination and vital records
- Location of pet friendly hotels
- **Service Animals**






## Plan for High-rise Residents

- Evacuation Plan
- Know your exits
- Extra water and food in case of a power outage (e.g. no access to the elevators)
- Furniture on balconies and high winds
- Does your high-rise have a contingency plan for a back-up generator in the event of a prolonged loss of power

*Talk to your superintendent, building manager*



## Alert London



Register online at:

[London.ca/AlertLondon](https://london.ca/AlertLondon)



## Alert London

- The City's new Emergency Notification System
- Residents can register online or by mail
- Register various contact paths (e.g. home phone, work phone, cell phone, text, and/or email addresses)
- Alert London will notify residents of a large scale emergency and provide public safety messages (e.g. community wide evacuation, shelter-in-place)



## Special Needs

- Mobility Considerations
- Vision, Hearing Loss
- Medications, special needs equipment
- Non-visible Disabilities
- Seniors
- Travel
- Do's and Don'ts

*Be Aware and Be Prepared*



## London Community Emergency Management Program Committee

Members include:

- City of London: CSEM, EES (Water, Roads), ESS, NCFS, Community Services, Corporate Communications
- London Fire Department
- London Police Service
- Middlesex-London Emergency Medical Services
- Middlesex London Health Unit
- London Health Sciences Centre and St Joseph's
- London Hydro
- London Transit
- Middlesex County



## Get Prepared

- City of London: [London.ca/Emergency](https://london.ca/Emergency)
- Middlesex County: [Middlesex.ca](https://middlesex.ca)
- Office of the Fire Marshall and Emergency Management: [Ontario.ca/emo](https://ontario.ca/emo)
- Environment Canada Weather: [weather.gc.ca](https://weather.gc.ca)
- Public Safety Canada: [publicsafety.gc.ca](https://publicsafety.gc.ca)

# Accessibility Advisory Committee Report

The 10th Meeting of the Accessibility Advisory Committee  
October 24, 2019  
Committee Room #4

Attendance                   PRESENT: J. Madden (Chair), A. Bueschleb, M. Dawthorne, T. Eadinger, N. Judges, G. LaHay, J. Menard, P. Moore, P. Quesnel, D. Ruston and K. Steinmann and J. Bunn (Clerk)

ABSENT: J. Wilson

ALSO PRESENT: K. Husain, L. Pompili, M. Stone and D. Turner

The meeting was called to order at 3:00 PM.

## 1. Call to Order

### 1.1 Disclosures of Pecuniary Interest

M. Dawthorne discloses a pecuniary interest in Item 5.1 of the 10th Report of the Accessibility Advisory Committee (ACCAC), having to do with the 2019 ACCAC Work Plan, by indicating that his employer provides alternative, accessible formats of documents.

J. Menard discloses a pecuniary interest in Item 5.1 of the 10th Report of the Accessibility Advisory Committee (ACCAC), having to do with the 2019 ACCAC Work Plan, by indicating that his employer provides alternative, accessible formats of documents.

## 2. Scheduled Items

### 2.1 Mechanical Parking Systems and Possible Repercussions for Accessibility

That it BE NOTED that the ~~attached~~ presentation from D. Satnik, EVE Park London GP Inc. and N. Dyjach, Stantec Consulting Ltd., with respect to mechanical parking systems and possible repercussions for accessibility as it relates to the property located at 1395 Riverbend Road, was received.

## 3. Consent

### 3.1 9th Report of the Accessibility Advisory Committee

That it BE NOTED that the 9th Report of the Accessibility Advisory Committee, from its meeting held on September 26, 2019, was received.

### 3.2 Municipal Council Resolution - 9th Report of the Accessibility Advisory Committee

That it BE NOTED that the Municipal Council resolution, from its meeting held on October 15, 2019, with respect to the 9th Report of the Accessibility Advisory Committee, was received.

## 4. Sub-Committees and Working Groups

None.

**5. Items for Discussion**

5.1 2019 ACCAC Work Plan

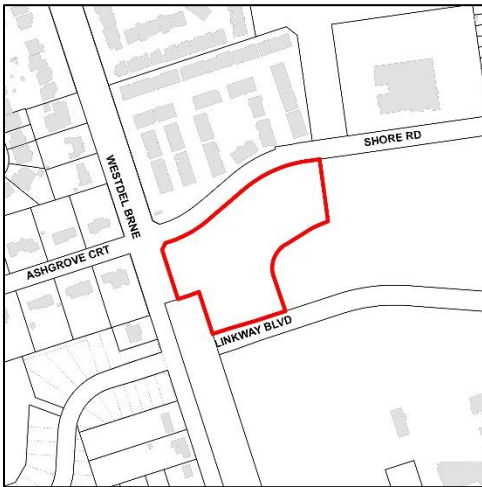
That it BE NOTED that the Accessibility Advisory Committee (ACCAC) held a general discussion with respect to the 2019/2020 ACCAC Work Plan.

**6. Adjournment**

The meeting adjourned at 5:01 PM.

## Zoning By-Law Amendment

### 1395 Riverbend Road Part of Block 1 Plan 33M-743



**File: Z-9098**

**Applicant: EVE Park London GP Inc.**

#### What is Proposed?

Zoning amendment to allow:

- Mixed townhouses and stacked townhouses
- 80 dwelling units total within 4 spiral-shaped buildings varying in height from 1 to 5 storeys
- Mechanical lift parking with 84 stacked parking spaces, plus visitor parking at ground level
- Roof-top solar panels and dwelling units powered by 100% renewable energy



## YOU ARE INVITED!

Further to the Notice of Application you received on August 20, 2019, you are invited to a public meeting of the Planning and Environment Committee to be held:

**Meeting Date and Time:** Monday, December 2, 2019, no earlier than 5:00 p.m.

**Meeting Location:** City Hall, 300 Dufferin Avenue, 3rd Floor

For more information contact:

Larry Mottram  
lmottram@london.ca  
519-661-CITY (2489) ext. 4866  
Development Services, City of London  
300 Dufferin Avenue, 6<sup>th</sup> Floor,  
London ON PO Box 5035 N6A 4L9  
File: Z-9098

[london.ca/planapps](http://london.ca/planapps)

To speak to your Ward Councillor:

Councillor Anna Hopkins  
ahopkins@london.ca  
519-661-CITY (2489) ext. 4009

**If you are a landlord, please post a copy of this notice where your tenants can see it.  
We want to make sure they have a chance to take part.**

# Application Details

Commonly Used Planning Terms are available at [london.ca/planapps](http://london.ca/planapps).

## Requested Zoning By-law Amendment

To change the zoning from a Holding Residential R5/R6 Special Provision Zone, Community Facility Special Provision Zone, and Open Space Zone, to a Residential R6 Special Provision Zone. The requested special provision is for increased building height, reduced building setbacks, reduced vehicle parking, and allowances for mechanical parking systems and sustainable building technologies. Changes to the currently permitted land uses and development regulations are summarized below. The complete Zoning By-law is available at [london.ca/planapps](http://london.ca/planapps)

### Current Zoning

**Zone:** Holding Residential R5/R6 Special Provision (h h-206 R5-3(18)/R6-5(42))

**Permitted Uses:** Cluster housing in the form of single detached, semi-detached, duplex, triplex, fourplex, townhouses, stacked townhouses, and low-rise apartment buildings.

**Special Provisions:** Front & exterior side yard depth to main building (minimum) 3.0 metres, lot coverage (maximum) 50%.

**Density:** 35 units per hectare (maximum)

**Height:** 12.0 metres (maximum)

**Zone:** Holding Residential R5/R6 Special Provision/Community Facility Special Provision (h h-206 R5-3(18)/R6-5(42)/CF1(19))

**Permitted Uses:** Cluster housing in the form of single detached, semi-detached, duplex, triplex, fourplex, townhouses, stacked townhouses, and low-rise apartment buildings; places of worship, community centres, and libraries.

**Special Provisions:** Front & exterior side yard depth to main building (minimum) 3.0 metres, lot coverage (maximum) 50%.

**Density:** 35 units per hectare (maximum)

**Height:** 12.0 metres (maximum)

**Zone:** Open Space OS1

**Permitted Uses:** Permits such uses as conservation lands, conservation works, golf courses, public and private parks.

**Height:** 12.0 metres (maximum)

### Requested Zoning

**Zone:** Residential R6 Special Provision (R6-5( ))

**Permitted Uses:** Cluster housing in the form of single detached, semi-detached, duplex, triplex, fourplex, townhouses, stacked townhouses, and apartment buildings.

**Special Provisions:** Front and rear yard setback (minimum) 3.0 metres; internal and external side yard depth (minimum) 3.0 metres; vehicular parking (minimum) 1.0 space per unit; parking may be provided by a mechanical stacked parking system and may be located on-site or within buildings; notwithstanding Section 4.19 of Zoning By-law No. Z.-1, parking provided by a mechanical stacked parking system shall be exempt from the size requirements of Section 4.19.2 - Dimensions of Parking Spaces, and no access aisles are required as per Sections 4.19.2.1 - Access Aisles and 4.19.6 (j) - Access Aisles for Parking Spaces for Persons with Disabilities; visitor parking shall be provided on an abutting private lane; and sustainable development features including green roof/wall treatments, electric vehicle charging stations, electric vehicle car sharing and carpooling, and rooftop solar collectors shall be permitted.

**Density:** 45 units per hectare (maximum)

**Height:** 18.0 metres (maximum)

## Planning Policies

Any change to the Zoning By-law must conform to the policies of the Official Plan, London's long-range planning document. These lands are currently designated as Multi-family, Medium Density Residential in the Official Plan which permits multiple-attached dwellings, such as row houses or cluster houses; low-rise apartment buildings; and small-scale nursing homes, rest homes, and homes for the aged, as the main uses.

The subject lands are within the Neighbourhoods Place Type in *The London Plan* permitting a range of uses such as single detached, semi-detached, duplex, triplex, fourplex, townhouse, and stacked townhouse dwellings, low-rise apartments, small-scale community facilities, and mixed-use buildings. These lands are also within the West Five Specific Area Policies.

# How Can You Participate in the Planning Process?

You have received this Notice because someone has applied to change the zoning of land located within 120 metres of a property you own, or your landlord has posted the public meeting notice in your building. The City reviews and makes decisions on such planning applications in accordance with the requirements of the *Planning Act*. If you previously provided written or verbal comments about this application, we have considered your comments as part of our review of the application and in the preparation of the planning report and recommendation to the Planning and Environment Committee. The additional ways you can participate in the City's planning review and decision making process are summarized below. For more detailed information about the public process, go to the [Participating in the Planning Process](#) page at [london.ca](#).

## See More Information

You can review additional information and material about this application by:

- visiting Development Services at 300 Dufferin Ave, 6<sup>th</sup> floor, Monday to Friday between 8:30am and 4:30pm;
- contacting the City's Planner listed on the first page of this Notice; or
- viewing the application-specific page at [london.ca/planapps](#).

## Attend This Public Participation Meeting

The Planning and Environment Committee will consider the requested zoning changes at this meeting, which is required by the *Planning Act*. You will be invited to provide your comments at this public participation meeting. A neighbourhood or community association may exist in your area. If it reflects your views on this application, you may wish to select a representative of the association to speak on your behalf at the public participation meeting. The Planning and Environment Committee will make a recommendation to Council, which will make its decision at a future Council meeting.

## What Are Your Legal Rights?

### Notification of Council Decision

If you wish to be notified of the decision of the City of London on the proposed zoning by-law amendment, you must make a written request to the City Clerk, 300 Dufferin Ave., P.O. Box 5035, London, ON, N6A 4L9, or at [docservices@london.ca](mailto:docservices@london.ca). You will also be notified if you speak to the Planning and Environment Committee at the public meeting about this application and leave your name and address with the Secretary of the Committee.

### Right to Appeal to the Local Planning Appeal Tribunal

If a person or public body would otherwise have an ability to appeal the decision of the Council of the Corporation of the City of London to the Local Planning Appeal Tribunal but the person or public body does not make oral submissions at a public meeting or make written submissions to the City of London before the by-law is passed, the person or public body is not entitled to appeal the decision.

If a person or public body does not make oral submissions at a public meeting or make written submissions to the City of London before the by-law is passed, the person or public body may not be added as a party to the hearing of an appeal before the Local Planning Appeal Tribunal unless, in the opinion of the Tribunal, there are reasonable grounds to do so.

For more information go to <http://elto.gov.on.ca/tribunals/lpat/about-lpat/>.

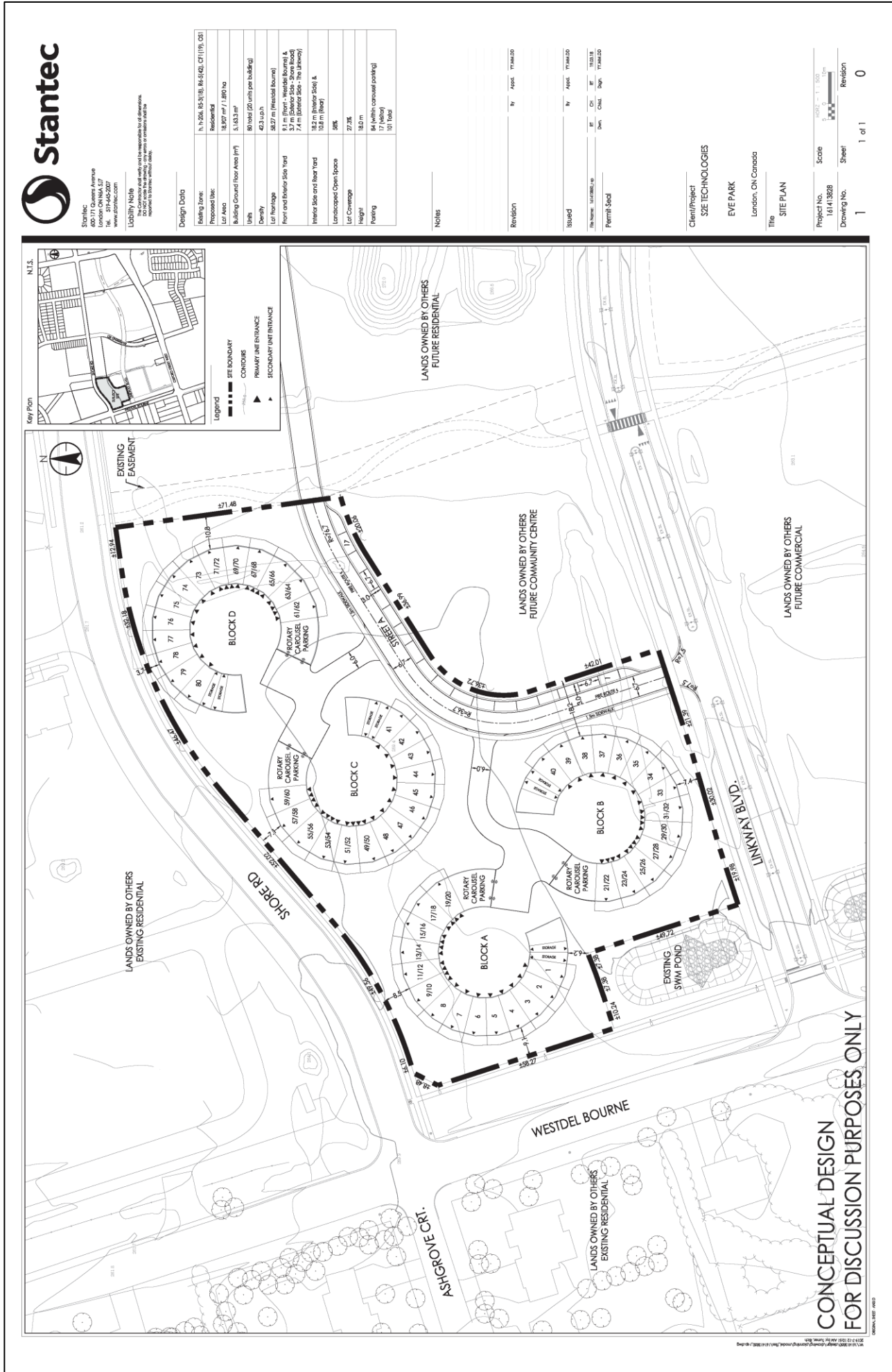
### Notice of Collection of Personal Information

Personal information collected and recorded at the Public Participation Meeting, or through written submissions on this subject, is collected under the authority of the *Municipal Act*, 2001, as amended, and the *Planning Act*, 1990 R.S.O. 1990, c.P.13 and will be used by Members of Council and City of London staff in their consideration of this matter. The written submissions, including names and contact information and the associated reports arising from the public participation process, will be made available to the public, including publishing on the City's website. Video recordings of the Public Participation Meeting may also be posted to the City of London's website. Questions about this collection should be referred to Cathy Saunders, City Clerk, 519-661-CITY(2489) ext. 4937.

**Accessibility – Alternative accessible formats or communication supports are available upon request. Please contact [accessibility@london.ca](mailto:accessibility@london.ca) or 519-661-CITY(2489) extension 2425 for more information.**



# Site Concept Plan



The above image represents the applicant's proposal as submitted and may change.

# Building Renderings



The above images represent the applicant's proposal as submitted and may change.

Hi Jerri:

Thank you for reaching out. To be honest, I was at home yesterday under the weather and the meeting completely fell off my radar. My apologies.

Putting this aside, my role at the Society is dramatically changing and I will be working away from London more and more as time goes on so in fairness to the other committee members, I will resign my position so it can be filled with an individual that can commit the necessary time to this most worthy endeavour!

I very much appreciate this opportunity and will defer to you for next steps.  
Regards,

**Jeanette Wilson**

Manager, Community Development  
South West, Central West & South Central regions

October 24, 2019

Ms. J. Madden,  
Chair  
Accessibility Advisory Committee  
City of London  
Ontario, Canada

Subject: Committee Resignation Guy Ashford-Smith

Dear Jackie,

It is with regret that I feel I must tender my resignation from this committee.

I felt at the time of applying that I could juggle the schedule of my medical treatments to be able to attend the meetings required. This has not been possible. I do have some flexibility in treatment times but I do not have control on my energy level as a result of these treatments.

I have enjoyed the brief time I have spent on this committee and I feel I have learned a lot. I think it will better for all if you can find a candidate who can better serve the needs on the committee.

Please let me know if you require any more information in this matter.

Yours sincerely,

Guy Ashford-Smith

c.c. J. Bunn, Committee Clerk, City of London

# NOTICE OF PLANNING APPLICATION

## Official Plan Amendment

### City-Wide Urban Design Guidelines

(DRAFT) City-wide

#### URBAN DESIGN GUIDELINES



(DRAFT) October 2019



**File: O-9131**

**Applicant: City of London**

#### What is Proposed?

Official Plan amendment to adopt the City-Wide Urban Design Guidelines as a guideline under The London Plan and the 1989 Official Plan.

#### What is a Guideline Document?

A guideline document is a more detailed but more flexible interpretation and implementation of The London Plan. It is an additional tool to assist City staff, the development community, streetscape and public space designers, and the public in designing and shaping the built form of the City.

## LEARN MORE & PROVIDE INPUT

Please provide any comments by **December 20, 2019**

Amanda Lockwood

[alockwood@london.ca](mailto:alockwood@london.ca)

519-661-CITY (2489) ext. 0209

City Planning, City of London, 206 Dundas St., London ON N6A 1G7

File: O-9131

<https://getinvolved.london.ca/CityDesign>

**If you are a landlord, please post a copy of this notice where your tenants can see it.  
We want to make sure they have a chance to take part.**

# Application Details

Commonly Used Planning Terms are available at [london.ca](http://london.ca).

## Requested Amendment to the Current Official Plan

To amend Section 19.2.2. of the Official Plan to adopt the City-Wide Urban Design Guidelines as a guideline document.

## Requested Amendment to The London Plan (New Official Plan)

To amend the Our Tools section of The London Plan to adopt the City-Wide Urban Design Guidelines as a guideline document.

# How Can You Participate in the Planning Process?

You have received this Notice because you are a party or stakeholder who has expressed interest in the City-Wide Urban Design Guidelines. A public planning process and Official Plan Amendment is required to add the City-Wide Urban Design Guidelines to the Official Plan and London Plan as a guideline document in accordance with the requirements of the *Planning Act*. The ways you can participate in the City's planning review and decision making process are summarized below. For more detailed information about the public process, go to the [Participating in the Planning Process](#) page at [london.ca](http://london.ca).

## See More Information

You can review additional information and material about this application by:

- visiting City Planning at 206 Dundas Street, Monday to Friday between 8:30am and 4:30pm;
- contacting the City's Urban Designer listed on the first page of this Notice.

## Reply to this Notice of Application

We are inviting your comments on the requested changes at this time so that we can consider them as we prepare a report that will include City Planning staff's recommendation to the City's Planning and Environment Committee.

## Attend a Community Information Meeting

A community information meeting will be held at City Hall to present this proposal and obtain input from interested members of the public. The meeting has not yet been scheduled, but will be in advance of the Future Public Meeting described below. You will receive a separate notice inviting you to this meeting. The Community Information Meeting is not the public meeting required by the *Planning Act* and attendance at this meeting does not create a right to appeal the decision of Council to the Local Planning Appeal Tribunal.

## Attend a Future Public Participation Meeting

The Planning and Environment Committee will consider the requested Official Plan changes on a date that has not yet been scheduled. The City will send you another notice inviting you to attend this meeting, which is required by the *Planning Act*. You will also be invited to provide your comments at this public participation meeting. The Planning and Environment Committee will make a recommendation to Council, which will make its decision at a future Council meeting.

# What Are Your Legal Rights?

## Notification of Council Decision

If you wish to be notified of the decision of the City of London on the proposed official plan amendment, you must make a written request to the City Clerk, 300 Dufferin Ave., P.O. Box 5035, London, ON, N6A 4L9, or at [docservices@london.ca](mailto:docservices@london.ca). You will also be notified if you speak to the Planning and Environment Committee at the public meeting about this application and leave your name and address with the Secretary of the Committee.

## Right to Appeal to the Local Planning Appeal Tribunal

If a person or public body would otherwise have an ability to appeal the decision of the Council of the Corporation of the City of London to the Local Planning Appeal Tribunal but the person or public body does not make oral submissions at a public meeting or make written submissions to the City of London before the proposed official plan amendment is adopted, the person or public body is not entitled to appeal the decision.

If a person or public body does not make oral submissions at a public meeting or make written submissions to the City of London before the proposed official plan amendment is adopted, the person or public body may not be added as a party to the hearing of an appeal before the Local Planning Appeal Tribunal unless, in the opinion of the Tribunal, there are reasonable grounds to add the person or public body as a party.

For more information go to <http://elto.gov.on.ca/tribunals/lpat/about-lpat/>.

### **Notice of Collection of Personal Information**

Personal information collected and recorded at the Public Participation Meeting, or through written submissions on this subject, is collected under the authority of the *Municipal Act*, 2001, as amended, and the *Planning Act*, 1990 R.S.O. 1990, c.P.13 and will be used by Members of Council and City of London staff in their consideration of this matter. The written submissions, including names and contact information and the associated reports arising from the public participation process, will be made available to the public, including publishing on the City's website. Video recordings of the Public Participation Meeting may also be posted to the City of London's website. Questions about this collection should be referred to Cathy Saunders, City Clerk, 519-661-CITY(2489) ext. 4937.

***Accessibility – Alternative accessible formats or communication supports are available upon request. Please contact [accessibility@london.ca](mailto:accessibility@london.ca) or 519-661-CITY(2489) extension 2425 for more information.***

# (DRAFT) City-wide URBAN DESIGN GUIDELINES



## Introduction

### WHAT ARE URBAN DESIGN GUIDELINES?

City Council may adopt guideline documents to provide more detailed direction and context for the implementation of The London Plan policies.

These City-wide Urban Design Guidelines provide complementary written and visual information to assist with the implementation of the City Design policies of The London Plan. They are both more detailed, and more flexible in their interpretation and implementation than The London Plan policies. These guidelines should not be considered as new policy or regulation, but rather an additional tool to assist staff, the development community, streetscape and public space designers, and the public in designing and shaping the built form of the city.

This document does not reconsider the policies of The London Plan. It does not create new regulations or alter the existing regulations in the Zoning By-law, the Site Plan Control By-law, Engineering Standards, or the Complete Streets Manual. Where there is reference to specific dimensions, they are not meant to be regulatory but rather targets based on best practices.

### STRUCTURE OF THESE GUIDELINES

This document shares the same structure as the City Design policies in The London Plan. The guidelines are meant to build on the City Design policies by offering more detail on how the policies may be implemented in different contexts. Sub-categories based on common themes and consideration are provided for ease of reference.

The guidelines are flexible in their interpretation, and provide creative and innovative design solutions to meet the intent of The London Plan.

## Table of Contents

<b>INTRODUCTION</b>	<b>5</b>	<b>PUBLIC SPACE</b>	<b>25</b>	<b>BUILDINGS</b>	<b>51</b>
<b>POLICY FRAMEWORK</b>	<b>6</b>	Parks and Recreation Master Plan Location		Massing	
<b>CHARACTER</b>	<b>9</b>	Crime Prevention Through Environmental Design (CPTED)		Active Facades and Pedestrian Orientation	
Neighbourhood Character		Privately Owned Public Space (POPS)		Residential Facades	
Cultural Heritage		Landscape Features		Non-Residential Facades	
Natural Heritage		Trails, Walkways and Connectivity		High Rise Buildings	
<b>STREET NETWORK</b>	<b>13</b>	<b>SITE LAYOUT</b>	<b>33</b>	Building Materials	
Grid/Modified Grid Street Network		Transition		Signage	
Block/Lot Sizing and Configuration		Existing Trees and Topography			
Interface with Higher Order Streets		Building Location			
Pedestrian/Cycling Networks		Loading, Garbage, and Service Areas			
<b>STREETSCAPE</b>	<b>19</b>	Residential Driveways			
Complete Streets		Surface Parking			
Transit		Underground and Structured Parking			
Traffic Calming		Drive-Through Facilities			
Vertical Elements		Site Circulation			
Landscaping		Bicycle Parking			
Noise and Retaining Walls		Landscaping			
		Interface with Public Right-of-way and Public Spaces			
		Amenity Spaces			

## Policy Framework

There are various policy and regulatory documents that will apply to planning and development applications, as well as public works. These City Design Guidelines will be used in conjunction with the following documents:

### THE PLANNING ACT

The *Planning Act* outlines matters of provincial interest that municipalities need to have regard for in carrying out their responsibilities. There is a provincial interest in promoting development that is designed to be sustainable, to support public transit and to be oriented to pedestrians, and, promoting a built form that is well-designed encourages a sense of place and provides for public spaces that are of high quality, safe, accessible, attractive and vibrant.

### THE LONDON PLAN

The London Plan is the City's Official Plan and lays out City Council's vision and priorities for the short-term and long-term growth of the city. The London Plan provides direction on the allocation of land uses, the design of built form and the degree of intensity in different areas of the city. The London Plan includes policies related to City Design, which form the basis of these City-wide Urban Design Guidelines. All of the work and investment the City does is to be consistent with The London Plan.

### SECONDARY PLANS

Secondary Plans may be established through a comprehensive study of specific existing or future neighbourhoods where it has been deemed important to coordinate the development (or redevelopment) of multiple properties. Secondary Plans provide more detailed policy guidance for that specific area. Where there is a conflict between the policies of a Secondary Plan and The London Plan, the Secondary Plan will prevail. Secondary Plans are identified in The London Plan, policy 1565.



### HERITAGE CONSERVATION DISTRICTS

Heritage Conservation Districts are designated pursuant to Part V of the Ontario Heritage Act to recognize and protect areas of the City that are identified as having significant cultural heritage value or interest. To help manage change in these areas, Heritage Conservation District Plans have specific policies and guidelines to ensure that what makes these areas of significant cultural heritage value or interest are conserved. Heritage Conservation Districts are also identified in The London Plan, policy 601. Heritage Alteration Permit approval may be required to make changes to a heritage designated property. Properties may be individually designated pursuant to Part IV of the Ontario Heritage Act. Heritage Alteration Permit approval may be required to make changes to a heritage designated property.

### AREA SPECIFIC DESIGN GUIDELINES

Area-specific Design Guidelines may be established for areas or sites with unique contexts or circumstances which require specific direction for their longer-term development. Area-specific Design Guidelines provide detailed guidance on how the community or site should be designed including the site layout, built form and public realm components. These city-wide guidelines will be used to supplement area guidelines, where they exist, to provide a comprehensive picture of how development will fit into the larger city structure. Area-specific Design Guidelines are identified in The London Plan, policy 1716.

### OTHER APPLICABLE DOCUMENTS

In addition to the above, planning and development applications need to meet the direction of various municipal policies and regulations including, but not limited to, the Zoning By-law, Site Plan Control By-Law, the Sign By-law, Access Management Guidelines, the Growth Management Implementation Strategy, Engineering Design Standards, the Ontario Building Code and the Complete Streets Manual. Other Guidelines Documents are identified in The London Plan, policy 1717 to 1722.

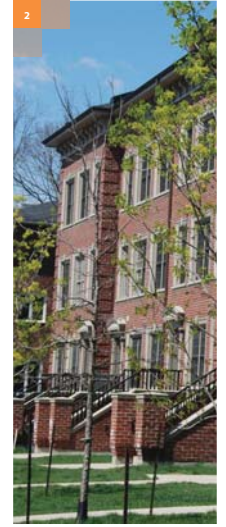
7 10

### NEIGHBOURHOOD CHARACTER

Each site and neighbourhood is unique and has different existing characteristics. The Place Types provide a planned vision for each area, but attention should also be paid to the existing features on the site and how they can contribute to the unique identity for the area and create a sense of place.

1. Strategically locate new parks, pathways and open spaces in central locations, adjacent to natural heritage features, at corners, view termini and adjacent to community facilities to form focal points and provide views throughout the neighbourhood.
2. Provide a cohesive and complementary architectural style throughout new development. Architectural style and form does not need to be the same but should be compatible to create a sense of place.
3. Consider the design of streetscapes, setbacks, façade rhythm, architectural datum lines, and landscaping, to contribute to the unique character of the neighbourhood for new or infill development.

4. Public art can be integrated into new neighbourhoods and development in the following ways:
  - i. creative lighting on buildings or within the public space
  - ii. gateway feature or focal point in unique districts or communities
  - iii. surface treatments and paving patterns
  - iv. into privately owned public spaces or integrated into building facades
  - v. street furniture, tree grates, transit stops and stations



## Character



### CULTURAL HERITAGE

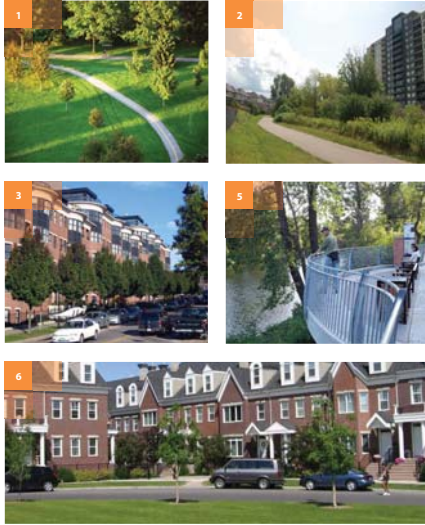
Protect and enhance existing cultural heritage resources through development that is compatible and highlights important heritage attributes.

1. Highlight distinctive heritage elements by maintaining views to these elements.
2. Design additions to heritage buildings that do not detract from the heritage features. This may include setting back the addition from the heritage resource, or using complementary materials and architectural style.
3. Incorporate materials and architectural cues (rhythm, massing and form) from the surrounding neighbourhood into the design of new buildings, additions and landscapes.
4. Continue visual datum lines from heritage buildings into new adjacent development, including floor, fenestration and cornice heights.
5. Design new development and neighbourhoods around existing cultural heritage resources and landscapes to create focal points and landmarks.

## NATURAL HERITAGE

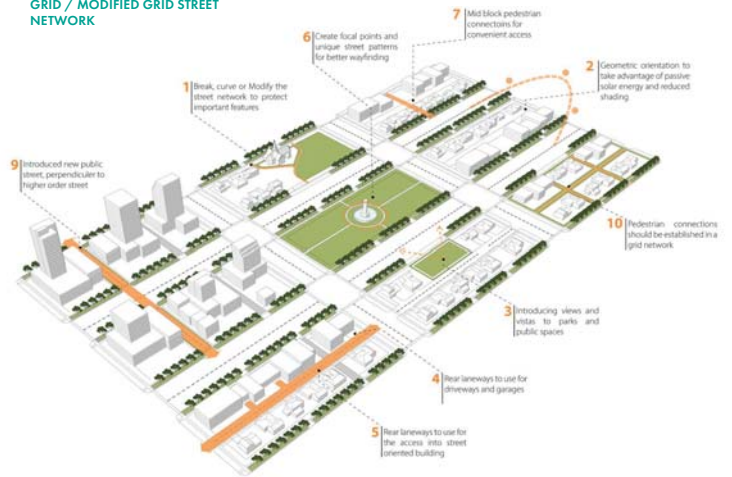
Consistent with the policies of The London Plan, protect and enhance existing natural heritage features by integrating them into the design and layout of the site or neighbourhood.

1. Lay out the street networks and development patterns to provide access and views to natural heritage features, such as creeks and woodlands. Use window streets and strategically locate buildings to provide views to natural features.
2. Locate park space next to natural features to increase views and allow for a buffer from development.
3. Choose building forms and configurations that utilize the existing topography on the site and make efforts to avoid clearing or flattening sites.
4. Resolve changes in elevation within the building form by stepping down across the building length or utilizing techniques such as walkout basements to minimize the use of retaining walls.
5. Integrate the pathway network to provide convenient access and views to natural features.
6. Utilize privately-owned rear driveways or laneways to allow for buildings to front onto natural features.



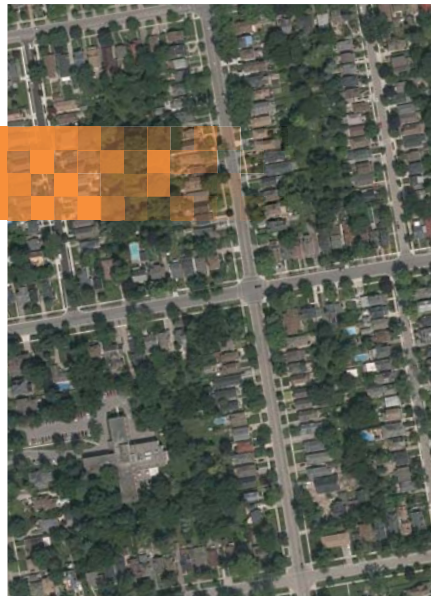
12

## GRID / MODIFIED GRID STREET NETWORK



14

## Street Network



A grid network of streets provides the most direct, convenient and easy to navigate neighbourhood configuration. Sometimes the grid can be broken or modified to respond to natural features or topography, or to optimize views and access to public spaces, transit and landmarks.

1. Break, curve or modify the street network to protect and enhance natural heritage features, cultural heritage resources and landmarks.
2. Consider the geographic orientation of streets relative to the sun to take advantage of passive solar energy and reduce shading impact on adjacent properties.
3. Protect and introduce views and vistas to parks and public spaces.
4. Use privately-owned rear laneways to reduce the impact of garages and driveways on the streetscape.
5. Along higher-order streets, consider privately-owned rear lanes to access street-oriented built form as a first priority, and window streets only where this cannot be achieved.
6. Strategically locate landmarks and focal points within neighbourhoods to help with wayfinding.
7. Introduce mid-block pedestrian connections for convenient access to transit, destinations and public space.
8. In new Neighbourhoods, the street network should protect for street connections to future development.
9. In Transit Villages, Corridors and Shopping Areas, new public streets should be introduced perpendicular to the higher-order streets to break down large blocks.
10. Where public streets are not possible, private streets or pedestrian connections can be established in a grid network.
11. Rear laneways, pedestrian connections and other private vehicle and pedestrian routes should be located and designed to ensure clear sightlines for safety.
12. Provide through streets instead of cul-de-sacs and crescents.
13. Consistent with the London Plan, a connectivity ratio of 1.5 or higher must be achieved in new neighbourhoods. The connectivity ratio is measured by dividing the number of street segments by the number of nodes, dead ends and cul-de-sacs.

(DRAFT) October 2019

## BLOCK / LOT SIZING AND CONFIGURATION

Block and lot sizes and configuration should be appropriate for the scale and intensity of the development on them. Block configuration should promote street-oriented parking form and accommodate all required parking and servicing on site. Block and lot sizing should also promote a mix of housing forms.

1. Blocks should be small and walkable, targeting a maximum perimeter of 600m. Block sizes adjacent to the arterial road network will be determined by minimum intersection spacing in the Access Management Guidelines.
2. Design block depths adjacent to higher-order streets to accommodate more intense built form with rear access and parking.
3. Orient lots to front higher order streets.
4. Provide a variety of lot sizes to accommodate a mix of building forms throughout new neighbourhoods.
5. Design corner lots, lots at T-intersections and lots at the end of view termini to be appropriately sized to accommodate enhanced design features, such as glazing, canopies, or height elements, and street-orientation.



14

## PEDESTRIAN / CYCLING NETWORKS

Consistent with the City of London Cycling Master Plan, pedestrian and cycling routes should be integrated into the street network. Off-road options may also be provided to supplement the primary cycling routes and allow for convenient access to public spaces, destinations and the trail network.

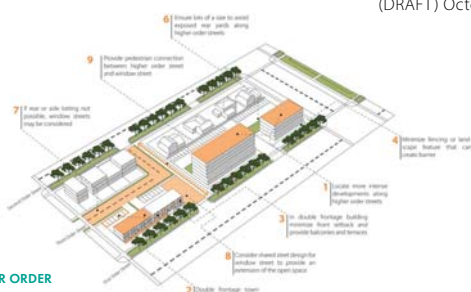
1. Provide pedestrian and cycling connections mid-block on long blocks, to reduce the travel distance between key destinations, such as transport stops.
2. Mid-block connections may be provided for convenient access from rear parking areas to the fronts of buildings in Transit Villages, Corridors and Shopping Areas.
3. Minimize curves and blind spots when introducing mid-block connections.
4. Design mid-block connections to be wide enough to allow for clear sightlines to and from streets and public spaces.
5. Size and orient lots adjacent to mid-block connections so that development can front onto the connection and reduce the need for blank walls and fencing.

6. Include trees, lighting and landscaping within mid-block connections in a manner that fits within the character of the Place Type.
7. Reduce the number of driveways and vehicle access points on streets that include cycling networks and primary pedestrian routes.
8. Provide benches, bike racks, landscaping and way-finding signage along cycling and primary pedestrian routes, particularly at transit stops and close to intersections.



18

(DRAFT) October 2019



## INTERFACE WITH HIGHER ORDER STREETS

Locate active building facades along the higher order street edge to promote safety, direct connections and animate the street.

1. Locate more intense forms of development, such as apartment buildings, along higher order streets to minimize vehicle access and parking between the building and the street.
2. In neighbourhoods, consider double frontage house forms and townhouse designs with rear parking.
3. In double-frontage building designs, minimize the front setback of buildings and deliver amenity space such as a front porch, upper level terrace or balcony, or a rear courtyard.

4. Minimize fencing or landscape features that create a barrier between the development and the higher order street. Ensure that any fence treatment is low and decorative, provides direct access to front doors, and allow for clear sight lines for pedestrians and vehicles.
5. Where side-lotting is necessary along higher order streets, locate the garage away from the higher order street and orient the front door and active building portions to the higher order street.
6. Design lots with a size and configuration that avoids exposed rear yards along higher order streets. Use the building

- to provide privacy and sound barrier as much as possible and reduce fencing next to the street. Side yard fencing should be setback behind the building wall and screened with landscaping.
7. Where rear or side lotting is not possible, window streets may be considered.
8. Consider a shared street design for window streets to provide an extension of the open space.
9. Provide pedestrian connections between the higher order street and the window street.

STREET NETWORK

17

## Streetscape



## COMPLETE STREETS

The Complete Streets Design Manual provides specific guidance on how the right-of-way should be designed for different classifications of streets. These City Design Guidelines will provide additional guidance on the interface between development on private property and the public streets.

## TRANSIT

Design streetscapes that are comfortable and convenient to access transit.

1. Locate transit stops close to intersections with safe pedestrian crossings, with consultation from the London Transit Commission.
2. Provide an adequately sized hard surface at transit stops between the sidewalk and the curb for accessibility.
3. Consider seating at all bus stops. Shelters should be provided at transit stops with high ridership.
4. Integrate sheltered areas into the design of development in Transit Villages, Corridors and Shopping Areas.
5. Where possible, provide refuge islands where transit stops are next to bike lanes to minimize conflicts.



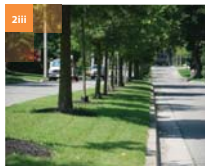
## VERTICAL ELEMENTS

Design streetscapes with coordinated vertical elements in the right-of-way to reduce clutter and contribute to the overall sense of place and unique character of each Place Type.

1. Locate trees, landscaping, signage, utilities and lighting between the curb and the sidewalk to reduce visual clutter and provide a buffer between pedestrians and vehicles.
2. Coordinate the location of the above elements to ensure trees do not block signage or lighting.
3. Landscaping should be low level to avoid blocking sightlines for pedestrians or vehicles, particularly at intersections.
4. Co-locate utilities and put them underground wherever feasible.
5. Wrap utility boxes in public art that adds to the character of the streetscape.



(DRAFT) October 2019



## TRAFFIC CALMING

All streets should be comfortable and safe for pedestrians. Traffic-calming measures can be integrated to change the speed of vehicles and the character of the area.

1. The paved vehicle portion of roads should be as narrow as possible.
2. Integrate the following traffic-calming measures into new streets and as part of street reconstruction in Downtown, Transit Villages, Corridors, Main Streets, and Neighbourhoods:
  - i. Bump-outs
  - ii. Raised intersections
  - iii. Planted medians
  - iv. Streets trees
  - v. Wide boulevards
  - vi. On-street parking
  - vii. Speed Cushions
  - viii. Bike lanes

STREETSCAPE

(DRAFT) October 2019



## LANDSCAPING

Trees and planting in the streetscape can have a big impact on the character and quality of the area. Landscaping on public streets should use native species, be low maintenance and consistent with the visions of the Place Type.

1. Provide street trees between the sidewalk and the curb on all public street where space permits where possible.
2. In Downtown, Transit Villages, Corridors and other locations with high pedestrian traffic, street trees should be provided in tree grates or formal at-grade or raised planter beds. Silva cells or similar soil storage technology are encouraged for all urban street tree planting.
3. In Neighbourhoods, street trees can be planted in a grass boulevard.
4. Low Impact Development (LID) features should be considered for major street reconstruction projects. LIDs should generally be located between the sidewalk and the curb, unless otherwise directed by the City Engineer.
5. In Downtown, Transit Villages, Corridors and other locations with high pedestrian traffic, curb cuts should be included in any LID design to allow water to drain into planters or vegetated areas.
6. In Neighbourhoods, LID features can be provided where appropriate.
7. The use of LID features can be considered in appropriate streetscape locations and for pedestrian pathways.

STREETSCAPE

## NOISE AND RETAINING WALLS

Retaining walls and noise walls should be avoided as they cut development off from the streetscape. Where it is not possible to avoid them, they should contribute positively to the surrounding environment.

1. Locate retaining walls on private property and outside of the City right-of-way.
2. If retaining walls are necessary, they should be designed to include:
  - i. planting beds,
  - ii. seating,
  - iii. terracing, and/or
  - iv. stairs or ramps.
 (Railings may be required in accordance with the Ontario Building Code).
3. Provide convenient pedestrian connections around retaining walls.
4. If noise walls are necessary, they should be designed to include:
  - i. compatible colours, materials and/or patterns,
  - ii. public art, and/or
  - iii. landscape screening on private property.
5. Break up long expanses of noise walls with different angles or heights.



## PARKS AND RECREATION MASTER PLAN

The Parks and Recreation Master Plan provides specific guidance on where public parks should be located and how they should be designed. These City Design Guidelines will provide additional guidance on the interface between development and parks and other public spaces.

### LOCATION

The inclusion of each public space in the design of neighbourhoods and new developments provides a place to meet and gather, create connections, and establish the character and sense of place for the surrounding area.

1. Locate public spaces centrally within new neighbourhoods, bounded by public streets, to form a focal point. Design new neighbourhoods to have 50% of the perimeter of a park bounded by public streets.
2. Locate public open space adjacent to natural features, at corners, view termini and adjacent to community facilities.
3. In the Downtown Place Type, public spaces may take the form of mid-block connections, and plazas/forecourts associated with new development.



## Public Space

(DRAFT) October 2019



4. Locate plazas at the corners of new development to serve as an extension of the public sidewalk.
5. Introduce civic spaces to dense existing neighbourhoods by providing a more urban, hardscape space for events and gathering.

### CRIME PREVENTION THROUGH ENVIRONMENTAL DESIGN (CPTED)

Creating public spaces that are safe and comfortable is important. The design of public space, and privately owned public space should maintain sight lines and not create hidden spaces.

1. Locate active building walls with windows and doors next to public spaces to maximize passive surveillance.
2. Maintain direct pedestrian routes from the public sidewalk to adjacent buildings.
3. Provide at least two unobstructed ways into and out of the space from the sidewalk should be provided.
4. Vertical elements including plants, landscape walls and furniture should be low enough to maintain open views.



### LANDSCAPE FEATURES

Incorporate landscaping and landscape features into the design of public spaces to create a sense of place, support food systems, and assist in achieving the goals of the Forest City chapter of The London Plan

1. Public spaces should be designed with a variety of hardscape and softscape material, coordinated with the adjacent streetscape.
2. Include a variety of seating options, public art and lighting that is appropriate for the Place Type.
3. Plant trees in sod or planting beds to allow for long term growth. Use Silva cells or similar soil storage technology for urban tree planting in plazas, POPS and seating areas.
4. Consider incorporating pollinator-friendly planting and edible foodscapes where they do not cause a conflict with other park elements.
5. Incorporate flexible gathering spaces that allow for neighbourhood programming such as markets, fitness classes and performances.



(DRAFT) October 2019

### PRIVATELY-OWNED PUBLIC SPACE (POPS)

POPS are encouraged in all Place Types. While privately owned and maintained, these spaces serve as an extension of the streetscape and/or public open space system.

1. The optimal location for POPS is on the south side of buildings and adjacent to public streets to allow sunlight penetration into the space and the building, where possible.

2. Locate POPS on corners where possible and provide entryways and doors into the space.
3. POPS should be designed with a variety of hardscape and softscape materials, coordinated with the adjacent streetscape.
4. Provide mid-block connections on large development blocks to allow pedestrians to walk from the public street through the development block.

5. Mid-block connections may be designed to double as POPS or amenity space for residents and include seating and other site furniture.
6. Mid-block connections should be a minimum 8.0m wide and designed with a variety of hardscape and softscape materials, coordinated with the adjacent streetscape.
7. Mid-block connections may serve as an extension of the multi-use pathway system, or as an outdoor amenity area.



PUBLIC SPACE

(DRAFT) October 2019

### TRAILS, WALKWAYS, AND CONNECTIVITY

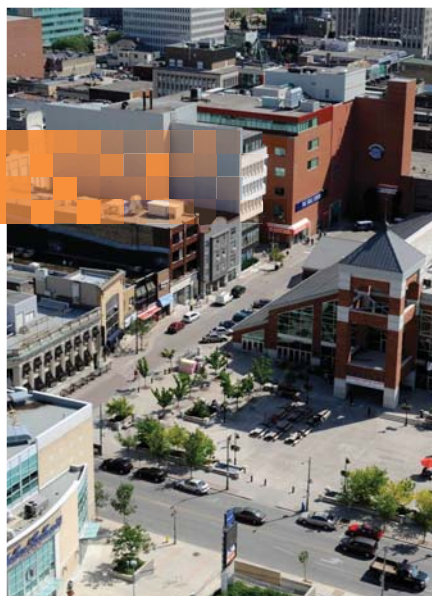
Trails, walkways, play equipment and recreational facilities incorporated in the design of public spaces allow for healthy and active lifestyles

1. The design of public spaces should allow for direct pedestrian routes from the public sidewalk to adjacent buildings
2. Multi-use pathways systems should be provided to support an alternative to sidewalks and extend through all Place Types, consistent with the City of London Cycling Master Plan.
3. The multi-use pathway network should extend from neighbourhoods to public transit stops.



PUBLIC SPACE

# Site Layout



## EXISTING TREES AND TOPOGRAPHY

Protect and maximize retention of existing grades, natural features and healthy trees on site. These features should help determine the organization of the site and locations of new built elements.

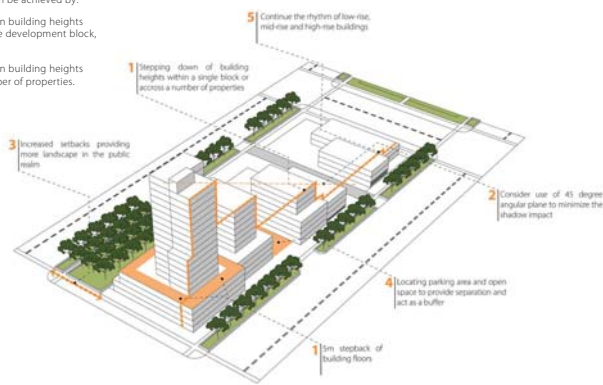
1. Locate buildings and hard surfaces away from trees and natural features.
2. Lay out parking areas to reduce impacts on perimeter trees and clusters of tree.
3. Use landscape islands to terrace large parking areas across sloping sites.
4. Address large grade changes within buildings through techniques such as side or back split buildings, or walk-out basements.
5. Step long buildings down across sloping sites to have multiple grade-related entrances and avoid exposed blank foundations.
6. Where exposed foundations are unavoidable, extend the facade materials to cover them, or use landscape terracing to raise the grade to floor level.
7. Use grade changes to optimize and hide underground parking access.

## TRANSITION

Different intensities of development and built form can exist together if there is an effort to provide an appropriate transition between the two forms.

1. Transition development down in height and density towards lower intensity Place Types, within the Place Type boundary. This can be achieved by:
  - i. stepping down building heights within a single development block, or
  - ii. stepping down building heights across a number of properties.

2. Consider the use of a 45 degree angular plane to minimize shadow impacts on adjacent development.
3. Increase building setbacks as development transitions away from the most intense, urban places, to provide more landscaping in the public realm.
4. Locate parking areas and open space on site to provide separation and a buffer between new and existing buildings of different intensities.
5. Continue the rhythm of low-rise buildings into the lower levels of mid- and high-rise buildings.



## BUILDING LOCATION

Locate buildings to frame the public realm, create usable amenity space on site and allow for direct and convenient access from the public sidewalk to entrances and between buildings on the same and neighbouring sites.

1. Locate buildings close to the highest order street to create a comfortable pedestrian environment.
2. On corner properties, locate the building at the corner.
3. Locate buildings in line with existing adjacent buildings that are not anticipated to change.

4. Within new development, provide a 1 to 2 metre setback to avoid encroachment of footings, canopies and signage.

5. Orient buildings with their long axis parallel to the streetscape to provide a continuous street wall.

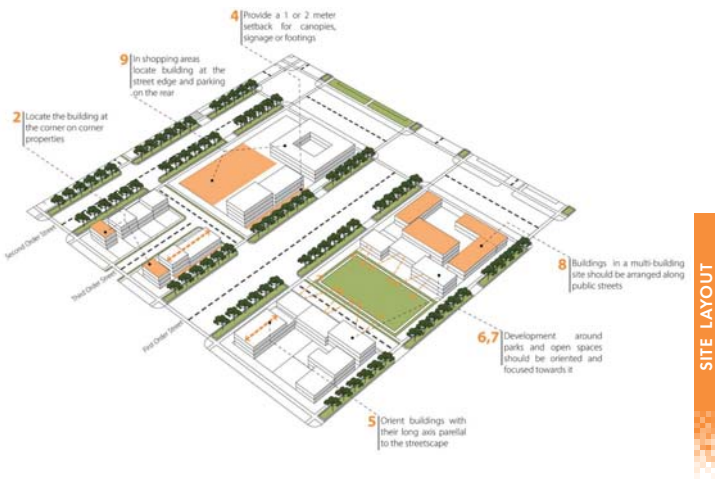
6. Development adjacent to parks, pathways and POPS should be oriented to and frame the open space.

7. Lay out multi-building sites to maintain views to open spaces and focal points, and to define usable amenity space.

8. Multi-building sites should be arranged to maximize the amount of building along the public streets. Additional buildings should be located along the primary drive aisles, and large scale buildings should be located to the rear of the site to minimize the impact of service and loading areas.

9. In Shopping Areas and Urban Corridors, locate buildings at the street edge and parking to the side or rear. Locate and orient entrances to be convenient for people arriving by public sidewalk and by vehicle.





SITE LAYOUT

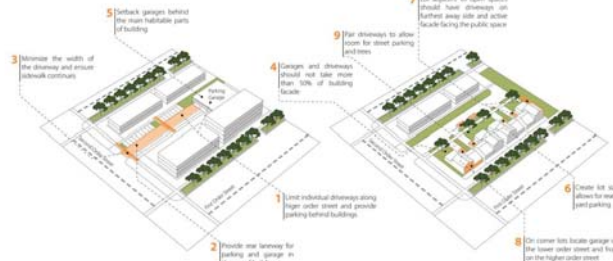
RESIDENTIAL DRIVEWAYS

Design development to provide a positive interface with the streetscape, maximize pedestrian comfort and safety and encourage social interaction.

1. Limit individual driveways and garages in Downtown, Transit Villages, Corridors and along higher order streets. Instead provide underground or structured parking, or surface parking behind buildings.
2. Provide privately-owned rear laneways for development fronting higher order streets with garages, and parking in the rear of buildings.

3. Minimize the width of vehicle access points for mixed use and multi-family development. Ensure sidewalks continue across driveways.
4. Garages and driveways should not take up more than 50% of the building facade, particularly for attached forms like townhouses.
5. Setback garages behind the main habitable parts of buildings.
6. Where possible, create lot sizes that allow for rear or sideyard parking to avoid vehicles parked between the building and the street.

7. For lots adjacent to open spaces and pedestrian connections, locate garages and driveways on the side furthest away to provide active facades facing the public space and reduce conflicts between vehicles and pedestrians.
8. On corner lots, locate the garage and driveway off of the lower order street, close to the interior property line and have the front door and active uses facing the higher order street to provide active facades on the higher order street.
9. Pair driveways to allow sufficient room for trees to grow and for on-street parking.



SITE LAYOUT

LOADING, GARBAGE AND SERVICE AREAS

Reduce the negative visual and noise impact of loading, garbage and other service areas for on-site users and the public realm.

1. Locate loading, garbage and other service areas within buildings wherever possible.
2. Use wing walls and enclosures made of the same materials as the main building to hide outdoor garage and utility areas.
3. Locate outdoor garbage and services to the rear of the building, or on the side where the rear is not possible.
4. Minimize the width of garbage and loading routes on site and screen them with low landscape walls and planting.
5. Locate utilities to the side or back of buildings and integrate them into the articulation of the building.

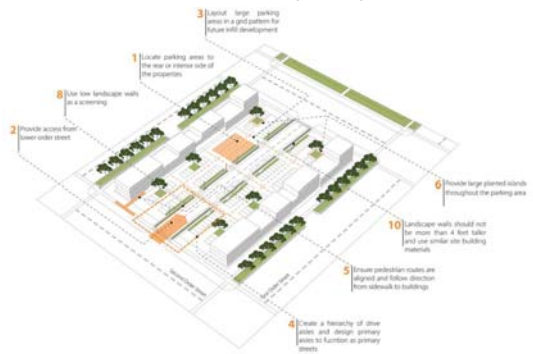


SURFACE PARKING

The location, configuration, and size of parking areas impacts the experience of pedestrians, transit-users, cyclists and drivers. Sites should provide safe, comfortable, convenient and intuitive access and connectivity throughout.

1. Locate parking areas to the rear or interior side yard of properties.

- i. Sidewalks
- ii. Demarcated cross walks
- iii. Tree planting
- iv. Seating areas
- v. Pedestrian scaled lighting
- vi. On-street parking
- vii. Cycling lanes







5. Design parking lots with pedestrian routes that are aligned and direct from the public sidewalk to buildings and between buildings.
6. Provide large planted islands throughout the parking area.
7. Consider including LID features surrounding and within parking areas through curb cuts and bio-swailes to assist with storm water management.
8. Screen parking areas from the public sidewalk with a combination of low landscape walls and planting.
9. Align landscape walls and screening with the front of building facades to provide a continuation of the street wall.
10. Landscape walls should be no taller than 1m and constructed of the same or complementary materials to the building(s) on site.
11. Consider designing parking areas in multi-unit developments as shared spaces with no curbs and enhanced paving materials to provide an extension of the amenity space on site.

SITE LAYOUT



**DRIVE-THROUGH FACILITIES**

Design of drive-through facilities to be integrated within the site layout to provide direct and safe pedestrian connections, allow for vehicular flow and reduce impacts on adjacent land uses and the public realm.

1. Locate drive-through facilities in the rear and interior side yard. Do not locate drive-through facilities next to public streets.
2. Design restaurants with drive-through facilities with pedestrian entrances that have direct access to public sidewalks.
3. Provide additional screening, through a mix of landscaping and low landscape walls, where any portions of the drive-through facilities are adjacent to a public street.

SITE LAYOUT

**UNDERGROUND AND STRUCTURED PARKING**

Incorporating parking in buildings or providing parking structures allow for parking to be screened from the public right-of-way, reducing the visual and noise impacts on the public realm. Provide active frontages on the ground floor to allow for direct connections to the public realm as well as the site.

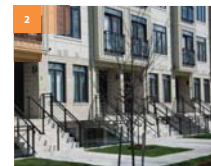
1. Integrate parking structures into the design of apartment buildings and free-standing commercial buildings. Provide active uses on the ground floor of apartment buildings.
2. Provide active uses on the ground floor of parking structures.
3. Consider shared access parking for new and intensified development.
4. Consolidate parking for big box area commercial development where Zoning permits.
5. Locate underground parking entrances away from the public realm.
6. Design parking garages with entrances as a very minimal part of a façade of new buildings.



**SITE CIRCULATION**

Provide clear and convenient paths of travel for all users - pedestrians, cyclists, and drivers - to and within the site. Prioritize pedestrian and cyclist safety and convenience.

1. Design parking lots with walkways throughout directly connecting building entrances.
2. Design new development with connections to existing and new pathway systems.
3. Provide a hierarchy of walkways through a site by utilizing different walkway widths and accompanying landscaping.
4. Design parking lots in a grid pattern with drive aisles designed as local streets.
5. Provide crosswalks in parking lots where any walkway crosses a drive aisle.
6. Provide direct walkways from the front entrances of different buildings/developments to other buildings/development and to public sidewalks.
7. Provide landscape islands with a mix of landscaping and shade trees.





- 8. Delineate walkways from vehicle lanes and parking stalls with a change of colour and material and raised from the surrounding drive aisle.
- 9. Design pedestrian walkways through parking lots with pedestrian level lighting.



- 10. Design pedestrian routes to be direct and efficient paths of travel.
- 11. Provide internal or sheltered bicycle storage for residential, office, institutional and industrial developments with convenient access from the sidewalk and cycle routes.
- 12. Locate short-term cycle parking close to commercial building entrances and windows for convenient access and to provide passive surveillance.



SITE LAYOUT



LANDSCAPING

Maintain existing trees on site and incorporate new shade trees to provide shade, screening, and enhance the user experience on site and within the public realm.

- 1. Incorporate and maximize the retention of mature trees for development of new sites or redevelopment of existing sites.
- 2. Incorporate mature trees into the design of parking lots by incorporating them into parking islands.
- 3. Surface parking can incorporate trees into the design through the following techniques:
  - i. In a Low Impact Development system
  - ii. In planters
  - iii. In tree grates
  - iv. Along primary pedestrian routes
  - v. Around the perimeter of the site
- 4. Provide large shade trees along all interior and exterior property lines where hydro lines allow.



SITE LAYOUT

BICYCLE PARKING

Incorporate bicycle parking into the design of new development as a component of comfortable and safe bicycling infrastructure.

- 1. Provide secure interior bike parking for large multi-unit residential, commercial, recreational and institutional buildings
- 2. Provide bicycle parking in all developments in highly accessible and visible locations, such as adjacent to main entrances.
- 3. Provide weather protection for bicycle parking whenever possible.



INTERFACE WITH STREETS AND PUBLIC SPACES

New development can support pedestrian activity and safety by providing public entrances, transparent windows and reducing blank walls along public rights-of-way. Providing buildings that directly front onto public spaces that allow for a defined edge and enclosure for the public spaces.

- 1. Provide principle entrances with direct walkway connections on facades that face public streets, public parks and open spaces. Incorporate transparent windows into the ground floor design of buildings to create an active frontage along street edges.
- 2. Provide a 1 to 2 metre setback to accommodate entrances, door swings, and walkways.
- 3. Clearly identify public entrances with signage, lighting, waiting areas, weather protection, and architectural features.
- 4. Locate residential units on the ground floor with direct access to the public sidewalk where zoning permits. Incorporate stoop, porch, and patio frontages into these units.
- 5. Evenly space commercial and residential entrances across the facade. Incorporating multiple entrances creates human scale rhythm and activates the street.

- 6. Include front doors on all entrances on the ground floor that are lockable from the outside, with an appropriate amount of glazing for the use. Sliding patio doors should only be used on upper floors.
- 7. Coordinate any built elements located in the setback between the sidewalk and the building with the materials of the building, as well as those of the streetscape.
- 8. Minimize the use of retaining walls that cut off development and active frontages from the streetscape and pedestrian network.
- 9. Minimize blank walls and locate them away from areas with exposure to the public realm and pedestrian traffic.





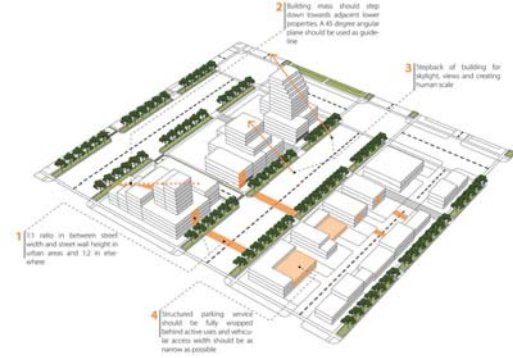
### AMENITY SPACES

Include outdoor amenity spaces in the design of neighbourhoods and mixed-use buildings to enhance the quality of life of residents.

1. Consider amenity spaces to have direct connection to pedestrian networks.
2. Provide amenity spaces adjacent to open spaces when possible.
3. Reduce negative impacts on amenity spaces by ensuring they are well buffered from parking lots, garbage and loading facilities.
4. Provide amenity space on the rooftop of mid or high-rise buildings.
5. Provide amenity space with direct ground floor access in low-rise development.
6. Consider grouping amenity spaces to ensure the space is a functional size.



### SITE LAYOUT



### MASSING

1. The massing of buildings should aim to provide between a 1:1 and 1:2 relationship between the height of the street wall to the width of the street to provide a sense of enclosure. 1:1 should be used in more urban context such as Downtown and Transit Villages, and 1:2 elsewhere.
2. Building mass should also step down towards adjacent lower properties that are not anticipated to change, as well as towards lower intensity Place Types. A 45 degree angular plane should be used as a guideline to minimize shadow impacts.
3. Above the streetwall, the building should step back to provide access to sunlight, sky views and create a human scale. A street wall of 2 to 5 storeys generally achieves these goals.
4. Structured parking and service areas should be fully wrapped in active building uses. Vehicular entrances to these areas should be as narrow as possible while still permitting turning movements.

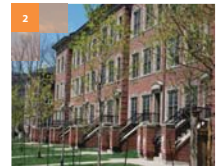
## Buildings



### ACTIVE FACADES AND PEDESTRIAN ORIENTATION

Design buildings to provide a comfortable environment for pedestrians within the public right-of-way and within the site.

1. The building base is the bottom 1 to 3 storeys of the building and should have a positive interface with the public realm. The base interface is intended to apply to all scales of buildings including low-rise attached units, commercial buildings, and mid- and high-rise buildings.
2. Interior residential and commercial units should be expressed on the exterior of the base through materials and articulation to create a human scale rhythm. This will generally appear as row houses for residential units, and individual store fronts for commercial buildings.
3. Address intersections and corner properties and establish an edge by massing buildings to the corner and providing a height element, material change, or special architectural features.
4. Break up long building facades through articulation and/or material change. Materials should generally wrap around exterior corners and change on interior corners.
5. Blank walls should be avoided where non-active facades cannot be avoided, they should be located away from street-facing facades and minimized where possible. Material changes, building articulation, display windows and creative lighting may be used to make blank walls appear less imposing, but are not a replacement for active ground floor uses.



### BUILDINGS

## RESIDENTIAL FACADES

For townhouses and low-rise apartments, provide an appropriate transition of building height, scale, and massing to ensure there are no adverse effects on neighbouring properties and different Place Types. Consideration should be given to the intent and possible future development of neighbouring properties based on the identified Place Type of The London Plan.

1. Raise ground-floor residential units slightly for privacy. Porches, stoops or terraces with landscaping should be provided to offer privacy between ground floor units and the public realm.
2. Provide ground floor residential units with direct access from the public sidewalk to a lockable front door to animate the building facade. A secondary entrance may be provided through a common hallway.
3. Emphasize the exterior entrance through windows, canopies, lighting, and other features. This will also differentiate the ground floor from those above.
4. Differentiate lobby entrances from individual unit entrances through glazing, canopy and/or signage.

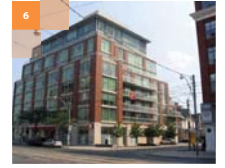


## HIGH RISE BUILDINGS

Design high-rise buildings to have a base, middle, and top to reduce the height and mass on the pedestrian environment, allow sunlight and reduce the wind-tunnel effect. The base establishes a human scale facade with active frontage elements. The middle will be visually cohesive but distinct from the base, and the top should provide a finishing treatment.

1. High-rise buildings should generally have a base designed as a low- or mid-rise building.
2. Locate the towers to define usable amenity space with desirable views and access to sunlight. Towers should aim to be stepped back from the base a minimum of 5 metres to create a human-scale streetwall and reduce the wind-tunnel effect.
3. Towers should be designed as point towers, with small floorplates generally designed to fit within a 50 metres diameter circle to avoid long walls, shadow impacts and visual mass.
4. Tower separation should be a minimum of 25 metres on the same property or 12.5 metres from the centerline of roads and interior property lines to protect for future development.

5. Towers may be offset or angled to increase the perceived separation between them, increase access to light, and decrease impacts on adjacent properties.
6. Provide an articulated or sculpted roof form in scale with the building, generally consisting of the top 3-5 storeys to contribute to an interesting skyline. Enclose all rooftop mechanical and elevator equipment within the architectural design of the building.
7. Where two or more towers are in close proximity, the tower heights can be different to contribute to a varied and interesting skyline.
8. The middle of the tower should visually connect the top and the base through the continuation of materials, architectural elements or features.
9. Relate the window placement and design of the base of the building to the tower design.
10. Provide variation going up the tower to add interest. This may include alternating the location of vision glass and opaque materials, or balcony placement.
11. Break down the mass of the building by providing breaks between balconies, with no more than two balconies creating a continuous form.



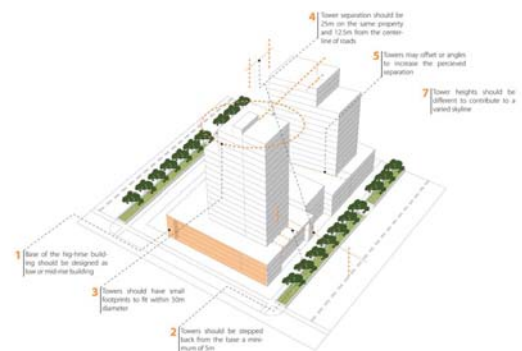
(DRAFT) October 2019

## NON-RESIDENTIAL FACADES

1. Design non-residential ground floors to be at grade with doors oriented towards the sidewalk with direct access. Consider using raised and removable platforms to allow flexibility to convert residential ground floors to commercial in the long term.
2. Include a high proportion of vision glass to non-residential facades on the ground floors to provide a visual connection into the building and passive surveillance. Window sills should be low and entrances should be highlighted.
3. Provide signage, weather protection and lighting at a human scale, proportional to the width of the unit and integrated into the architecture of the building.
4. Design civic, and institutional buildings as landmarks, and limit access points and larger floor plates. Highlight the entrances through a greater proportion of glazing, larger canopy and/or signage.
5. Industrial buildings may have fewer windows and entrances. The largest proportion of vision glass should highlight the main entrance, in addition to other features such as signage and canopies.



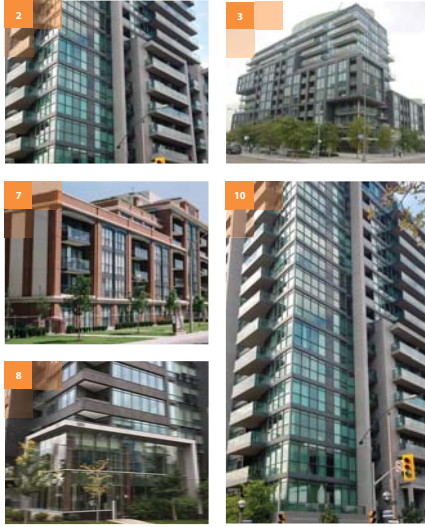
(DRAFT) October 2019



## BUILDING MATERIALS

A diversity of materials in new development will help to visually break up massing, reduce visual bulk, and add interest to the building design. Articulation is a horizontal change (recesses and projections) in building place that helps to break up the length of long buildings.

1. Provide recesses and projections that are a minimum of 1m deep. Relate articulation to the rhythm of interior units where possible. Generally, heavier materials should be projected out from lighter materials.
2. Where there is a horizontal material change, aim to include a slight articulation change to resolve the transition.
3. Recesses and projections should be a minimum 0.3 metres deep in order to be noticeable. Relate articulation to the rhythm of interior units where possible.
4. Generally, heavier materials should be located lower on the building.
5. Provide roof articulation through providing gables, dormers or varying the direction or height of pitched roofs. Roof articulation may also include providing parapets or changes in height on flat roofs.
6. Only provide parapets where they relate to a projection in the façade, or a change in material.



(DRAFT) October 2019

7. Provide a cornice or cap to finish any flat-roofed building portions. The cornice or cap should complement the style of the overall architecture and be appropriately scaled to the building design.
8. Utilize transparent glass and glazing to break up the mass of the building, activate the streetscape and provide passive surveillance for commercial, residential, office, and institutional uses. Design window treatments to be bird friendly.
9. Minimize blank walls and locate them away from areas with exposure to the public realm and pedestrian traffic.
10. Provide windows that are proportionate to the facade they are on. Generally, the space between windows, or between a window and the edge of the facade should be narrower than the window itself.
11. Glazing does not need to be evenly spaced, but minimizing the width of blank walls should be considered.
12. Utilize transparent glass and glazing along storefronts for Main Street, Rapid Transit Corridor, Shopping Area, and Institutional Place Types to maximize passive surveillance and activate public realm.



## SIGNAGE

Incorporating the design of signage in the design of new buildings or development will allow for a cohesive design and character for the building and development. The location, size, number, construction, alteration, repair and maintenance of all outdoor signs and signs visible from the exterior premises, including signs located in windows, are regulated by the Sign By-law 2017.

1. Reduce light impacts on neighbouring properties by using:
  - i. Utilize individual lit letters
  - ii. Gooseneck lighting, and
  - iii. Avoiding the use of LED screens and uplit or backlit shadow box lights.

November 20<sup>th</sup>, 2019

City Council

The City of London

Re: Barrier Free Sidewalks

Council,

Recently, a petition was undertaken to gain support for barrier free sidewalks, specifically during the winter months. To date, over 600 people have signed this petition. This petition has gained attention in the local media on 980 CFPL and CBC London. A copy of the petition along with a list of signatures is on file with the Clerk's Office.

Sidewalk snow clearing has been problematic for years. Disabled users are, in many cases, unable to traverse the sidewalks as they are impassable once snow becomes packed and icy. Sidewalk users are falling and getting injured as there isn't as much emphasis on our sidewalks as there is for roads.

Given the vital necessity to ensure a clear, safe sidewalk network in London, I am requesting that City Council give some serious consideration during budget deliberations to make sidewalk clearing and maintenance a high priority.

I welcome your feedback.

Thank you

Gerald LaHay

## Petition on Change.org Addressed to The Corporation of the City of London

Year-round barrier free access to sidewalks in London is a basic right. Many Londoners face obstacles as they travel in the city. I am asking that London City Council make it a high priority and focus on ensuring we can access sidewalks every day of the year, especially during the snowy months.

Those with disabilities, pedestrians with small children...anyone who uses a sidewalk should not be prevented from traveling in an active society. We rely on public transportation yet can't access it after a snowfall.

During the summer months, sidewalks are closed with no notice or improper signage, again, a barrier to easy access.

Please lobby your Councillor! Thank you for your support.

#heldhostageathome

**ACCAC Work Plan**

Item #	Project/Initiative	Background	Lead/Responsible	Proposed Timeline	Proposed Expenses	Proposed Budget	Relation to London Strategic Plan	Status
1	Transportation Advisory Committee (TAC) representative	Designated ACCAC rep on TAC	As elected by ACCAC; P. Moore	Ongoing	NIL	NIL	The strategic plan repeatedly references the Transportation Master plan, one of the primary documents used to direct the actions of TAC	Currently have an active TAC member
2	Trails Advisory Group (TAG) Representative	Designated ACCAC rep on TAG	As elected by ACCAC; J. Madden, M. Dawthorne	Ongoing	NIL	NIL	Building a sustainable City 2.A (pg 11)	Currently have 2 members actively involved with TAG
3	Site Plan Reviews	This is mandated under AODA legislation (See Site Plan Process best practice Initiative) Site plan checklist created by ACCAC is currently in use.	M. Dawthorne/J. Madden	Ongoing	NIL	NIL	This is mandated under AODA legislation	Site-plan checklist currently in use. Staff to report back to ACCAC in Fall 2019 to report on its effectiveness.
4	Continue to advocate for use and expansion of FADS document	ACCAC has identified several areas where the FADS document could be expanded or strengthened. Feedback given in Aug/19.	Policy and Bylaw Subcommittee	Ongoing	NIL	NIL	Strengthening our Community 4C; 5H Building a Sustainable City 2A, 4D	Staff currently updating FADS and incorporating feedback from ACCAC. Should be ready for review before the end of 2019. FADS to be a live document so continue to submit improvements as they become arise.
5	Consult/Advise members of the public/external parties upon requests or referral from city staff	Historically ACCAC has received, often through City staff or accessibility@london.ca, requests to advise builders, architects, businesses, and citizens (amongst many other groups) on aspects of accessibility	Variable sub-committees or ACCAC Chair/Vice Chair; as appropriate	Ongoing	NIL	Nil	Strengthening our Community 1A; 5B; 5C; 5H	Presentations regularly made to ACCAC during monthly committee meetings. Have a rep on LTC Accessibility advisory committee for the first time in 2019. Continue into 2020.
6	Undertake Community Outreach to raise Awareness of ACCAC and its role within the city; Promote resources developed by ACCAC to Londoners	ACCAC has historically partaken in outreach varying from hosting full day conferences, to Lunch 'N' Learns, to exhibiting at community events.	Education and Awareness Sub-committee	Ongoing	registration costs, ACCAC materials	>\$100 per session; not to exceed \$1000 annually	Leading in Public Service 1A; Strengthening Communities 2B; 3A;	Accessible trick or treating was a successful new initiative in 2019. Look at new opportunities in 2020 including plans to mark Dec. 3rd as International Day of Persons with Disabilities.
7	Access2 expansion	Several years ago the City of London became the first municipality in Canada to accept the Access2 Card (Easter Seals program) at all municipal venues. During that expansion London also went from 3 to 48 venues accepting the card. Many new venues/programs now exist and could be approached.	Education and Awareness Sub-committee; J. Menard	Ongoing throughout 2020	NIL	NIL	Strengthening our Community 2B, 2C, 3A	No progress made in 2019 but list has been compiled for possible Access2 expansion. Continue with this objective in 2020.
8	Review Deaf/Blind child at play sign policies	ACCAC members have noted many of these signs have been placed in the same location for decades which raises the question of their appropriateness/effectiveness. Also look at potential for other signage including "Child with Autism". Staff attended ACCAC meeting in 2018.	Policy Subcommittee; M. Dawthorne	winter-spring 2020	NIL	NIL	Strengthening our Community 5B	Received staff presentation in 2018. ACCAC to make formal recommendations in 2020.
9	Engage in discussions around Paratransit and what role, if any, the city could/should undertake in improving the service, noting it is an LTC service, not that of the city directly. Also investigate opportunities for improvements in other forms of accessible transportation.	Accessible transportation was the number one priority that arose from our Community Open Houses in 2017. Paratransit booking system is cumbersome with an inadequate number of rides available. No accessible transportation available outside of Paratransit working hours. Accessible taxis are difficult and costly to access.	Transportation Working Group	Early 2020	potential meeting/consultation sessions, food, space	1200	Strengthening our Community 5H	Advocate for accessible transportation needs (particularly Paratransit) in conjunction with other city committees and agencies during budget talks in early 2020. Continue to make recommendations on all types of accessible transportation: conventional transit, Paratransit, accessible taxis.
10	Participate in the review of the 2018-2021 Accessibility Plan	mandated responsibility of ACCAC under the AODA	Policy Subcommittee, final draft to be brought to full committee	Per staff timeline	NIL	Nil	Accessibility Action Plan 2018-21	Have worked with London's Accessibility specialist throughout 2019 and will continue in 2020.



11	Review City Budget with an accessibility lens.	Included in the current 2018-21 Accessibility Plan	Chair/Vice-Chair	During budget season	NIL	Nil	Accessibility Action Plan 2018-21	Worked with city staff in 2019 and will continue in 2020
12	Annually nominate a candidate for the Mayor's New Year's Honor List under the Accessibility category.	Included in the current 2018-21 Accessibility Plan	Chair/Vice-Chair	Fall 2020	NIL	Nil	Accessibility Action Plan 2018-21	Discuss potential recipients in Sept. 2020.
13	Continue to develop and distribute pamphlets to inform the public about issues related to persons with disabilities.	Included in the current 2018-21 Accessibility Plan	Education and Awareness Subcommittee	Ongoing	printing		Accessibility Action Plan 2018-21	Continue in 2020 with Education and Awareness sub-committee taking the lead.
14	Investigate alternative participation at meetings and sub-committee meetings to increase participation	Under the previous council a survey was sent out regarding Advisory Committee interest in remote access to committee meetings. No further announcement was made after feedback was provided. ACCAC historically experiences Quorum issues, in part due to members missing meetings for the very reason they were appointed (e.g. their disability makes attendance impossible, unable to coordinate Paratransit, etc.)	Education and Awareness Sub-committee	Spring/Summer 2020	potential software/connection fees	\$500		Our committee currently provides captioning services at all meetings and sub-committee meetings with assistance from Clerk's office as needed. Our committee also allows for remote call-ins for sub-committee meetings as needed. Continue to gather information and advocate for similar resources for all City committees as needed.
15	Produce an "Awareness Calendar" highlighting awareness days, weeks, months related to accessibility and disability	This used to be done monthly but was only shared amongst ACCAC. To promote accessibility and awareness it was felt a broadening of this approach would benefit the community. ACCAC to create the calendar and engage city staff on including it/merging it with other cultural/awareness calendars currently used/posted by the City.	Education and Awareness Sub-committee; K. Husain	Early 2020	Nil			Calendar is currently being compiled by K. Husain and should be ready for distribution in early 2020.
					Total	not to exceed \$6000 (ACCAC's historically approved Annual budget)		