

# Agenda

## Accessibility Advisory Committee

1st Meeting of the Accessibility Advisory Committee

January 24, 2019, 3:00 PM

Committee Room #4

The City of London is committed to making every effort to provide alternate formats and communication supports for Council, Standing or Advisory Committee meetings and information, upon request. To make a request for any City service, please contact [accessibility@london.ca](mailto:accessibility@london.ca) or 519-661-2489 ext. 2425.

Pages

1. **Call to Order**
  - 1.1 Disclosures of Pecuniary Interest
  - 1.2 Election of Chair and Vice Chair for the term ending June 1, 2019
2. **Scheduled Items**
  - 2.1 3:00 PM Kathryn Preston, Dillon Consulting Limited – SoHo Thames Valley Corridor Project 2
  - 2.2 3:15 PM Sabrina Stanlake-Wong and Jason Johnson, Dillon Consulting Limited – Wonderland Road Class Environmental Assessment Study
  - 2.3 3:30 PM Julie Michaud, Landscape Architect – Kilally Fields Project 12
3. **Consent**
  - 3.1 10th Report of the Accessibility Advisory Committee 15
4. **Sub-Committees and Working Groups**
5. **Items for Discussion**
  - 5.1 Paratransit Meeting – J. Madden
6. **Deferred Matters/Additional Business**
7. **Adjournment**

**Next Meeting: February 28, 2019**

## SoHo Thames Valley Corridor Project

Date January 6 2019

For: Accessibility Advisory Committee

From: Eric Conway, Project Coordinator, Environmental and Parks Planning  
Kathryn Preston, Associate, Dillon Consulting Limited

### Introduction to Project

This project is a major component of the redevelopment of the Old Victoria Hospital Lands (OVHL). The site is generally bound Wellington Street to the west, South Street to the north, Maitland and Colborne Street to the east and the South Branch of the Thames River to the South. Much of the site was part of the OVHL that plans for residential intensification along South Street and throughout the community.

### Project Site



### Goal

Create a park system along the north side of the Thames River throughout the SoHo Community.

### Supporting Background Studies

- Geotechnical Reports (establishing the long term stable slope and erosion access allowance)
- Record of Site Condition (reviewed past uses and contamination surveys)
- Environmental Impact Study (includes recommendation for woodland buffers)

### Planning and Cycling Context

This project is a product of the Soho Community Improvement Plan and the Old Victoria Hospital Lands Secondary Plan (2014). Lots of public engagement opportunities were facilitated to help identify the long term redevelopment opportunities

for the area. Wellington Road is identified as a Rapid Transit Corridor. Nelson Street is a signed east-west bicycle route and Colborne Street has bicycle lanes. The Thames Valley Corridor continues to the west of the site and connections with Harris Park and

### **Project Features (see panels enclosed)**

- Create a new section of the Thames Valley Parkway from Wellington to Maitland. Provide a Mid-Block Connection from South Street to TVP.
- Build an urban promenade from Wellington to Colborne (probably constructed in phases) along TVP.
- Create an urban park at the intersection of Colborne and Nelson as a gateway to the corridor.
- Create a park driveway (including parking and sidewalks) extension from Waterloo to intersection of Colborne and Nelson (including parking.
- Redevelop Wellington Valley Park (currently lawn, previously used for cricket)

### **Engagement so Far**

- First PIC in Nov 2018 (about 80 people in attendance and 30 surveys completed) November 28
- Letter and post cards prior to PIC mailed to SoHo Community Members
- Survey at PIC and online with Get Involved London webpage.
- Met with SoHo Community Association
- Met with representative from N'Amerind.

### **Summary of Feedback Received**

- Environmental and naturalization opportunities are most important.
- Playground and passive recreation opportunities over active play areas.
- Gardens for food, pollinators and native flora should be included throughout.

### **Other Projects in Area**

- SoHo Civic Space (northwest corner of Colborne and South).
- Back to the River

### **Timeline & Next Steps**

- Second PIC Scheduled (tentatively) for March 2019
- Detailed Design phase in fall through winter of 2019/2020
- Construction 2020 (tentative)
- Detailed Geotechnical work (spring 2019) for built feature (pathway and other paved components)

*Enclosed are the panels that were prepared for the November 28 Public Information Centre illustrating current conceptual proposal for the park.*

# Opportunity Statement

The project objective is to generate a long-term concept plan and short term detailed design (associated with Phase 1 implementation) for the Thames Valley Corridor (TVC) on the north side of the Thames River between Wellington Street and Maitland Street, within the Old Victoria Hospital Lands.

The concept plan and detailed design developed from this study will support the goals and objectives of the SoHo Community Improvement Plan and be consistent with Official Plan policies detailed in the Old Victoria Hospital Lands (OVHL) Secondary Plan, while taking into consideration the 'Ribbon of the Thames' vision and the City's desire to maximize the area and value of future OVHL development lands.

**Key Recommendations Include:**

- Create Gathering Spaces along the top of the Thames Valley Corridor within a new Urban Park Setting;
- Establish Park Amenities for District Park;
- Provide Opportunities for Views to the Thames River and Other Important Site Features;
- Improve Pedestrian Circulation and Linkages to Adjacent City Parks and the Thames Valley Parkway;
- Provide a New Local Shared Pedestrian Driveway along the top of the TVC;
- Integrate the Ecological Recommendations identified in the Environmental Impact Study.

# Purpose of Tonight's Open House

The purpose of tonight's Open House is to generate feedback on the proposed draft concept in order to help refine the design.



Existing Site Context

# Study Process



May to July 2018

August to October 2018

November 2018

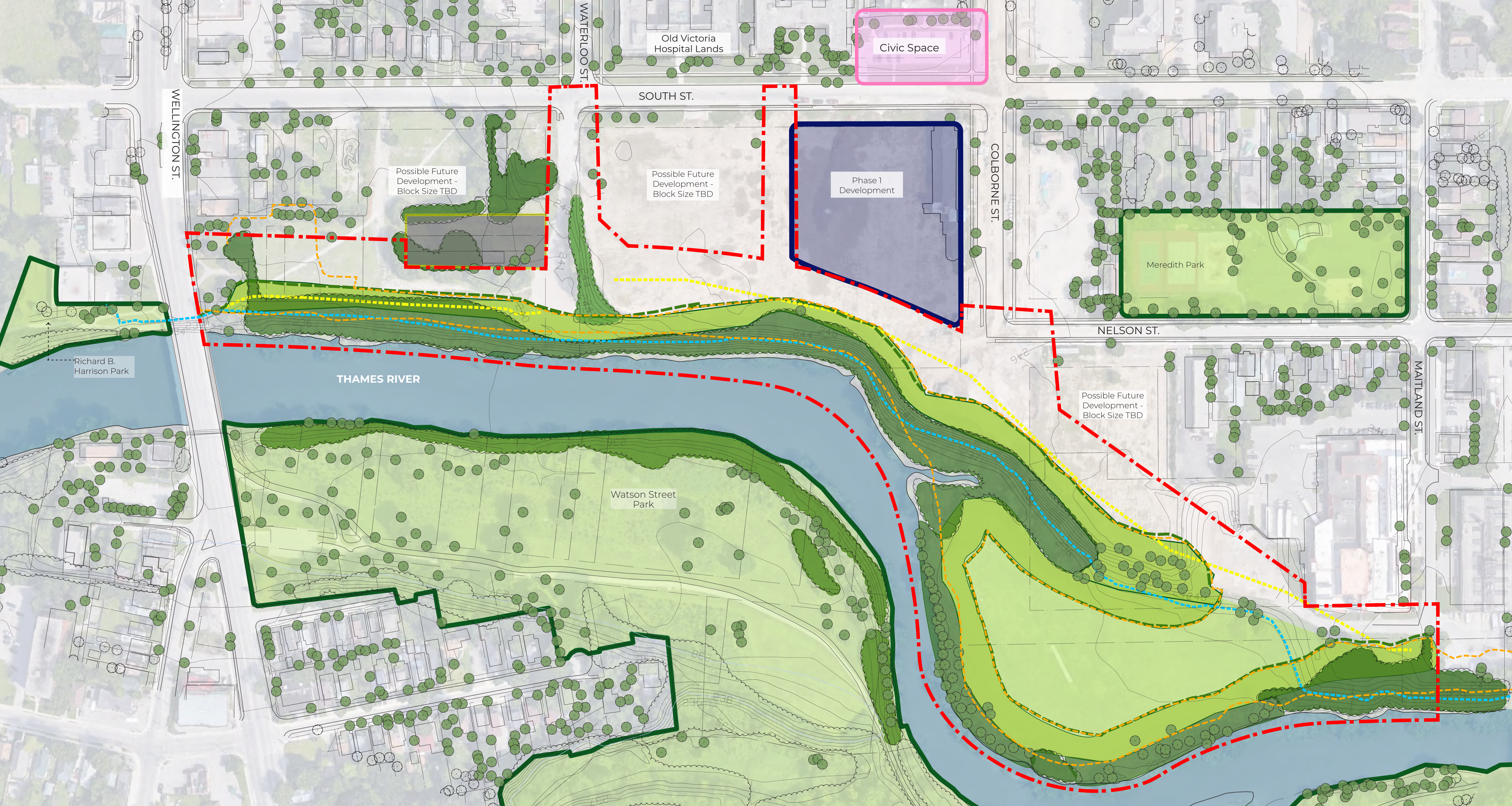
Winter 2019

Winter 2019

Fall 2020

Tentatively Early Spring 2020 (TBD)





# Development Setbacks

- LEGEND:**
- - - Approximate Site Boundary
  - - - Regulatory Floodplain Limit
  - - - 15m Riverline Buffer (EIS)
  - - - Woodland Buffer (EIS)
  - - - LTSSC Position Plus 6m Erosion Access Allowance
  - Existing Woodland
  - Woodland Enhancement within min. 10m Buffer (EIS)
  - Existing Park or Open Green Space
  - Private Property Blocks
  - Future Development
  - Proposed Future Civic Space

# 1 Thames Valley Parkway

- 3.0m Wide Multi-use Pathway
- Connection to Neighbourhood ROW's, Existing TVP and Amenities
- Accommodate Potential Widening of Wellington Street and Bridge

# 2 Urban Park Corridor

- Between Wellington and Colborne Street
- Public Gathering Spaces
- Enhanced Key Entrance Points to Thames Valley Corridor
- Lighting
- Improve Key Sight Lines / Views through Potential Selective Removal of Invasive Trees and Shrubs
- Support Recommendations / Restrictions identified in EIS

# 3 Ecological Enhancements

- Enhancements to Existing Woodland (per EIS)
- Enhancements to Woodland Buffers (per EIS)
- Invasive Species Management
- Enhancements to Turtle Nesting Habitat
- Enhancement of Existing Vegetation

# 4 Shared Pedestrian / Vehicular Drive

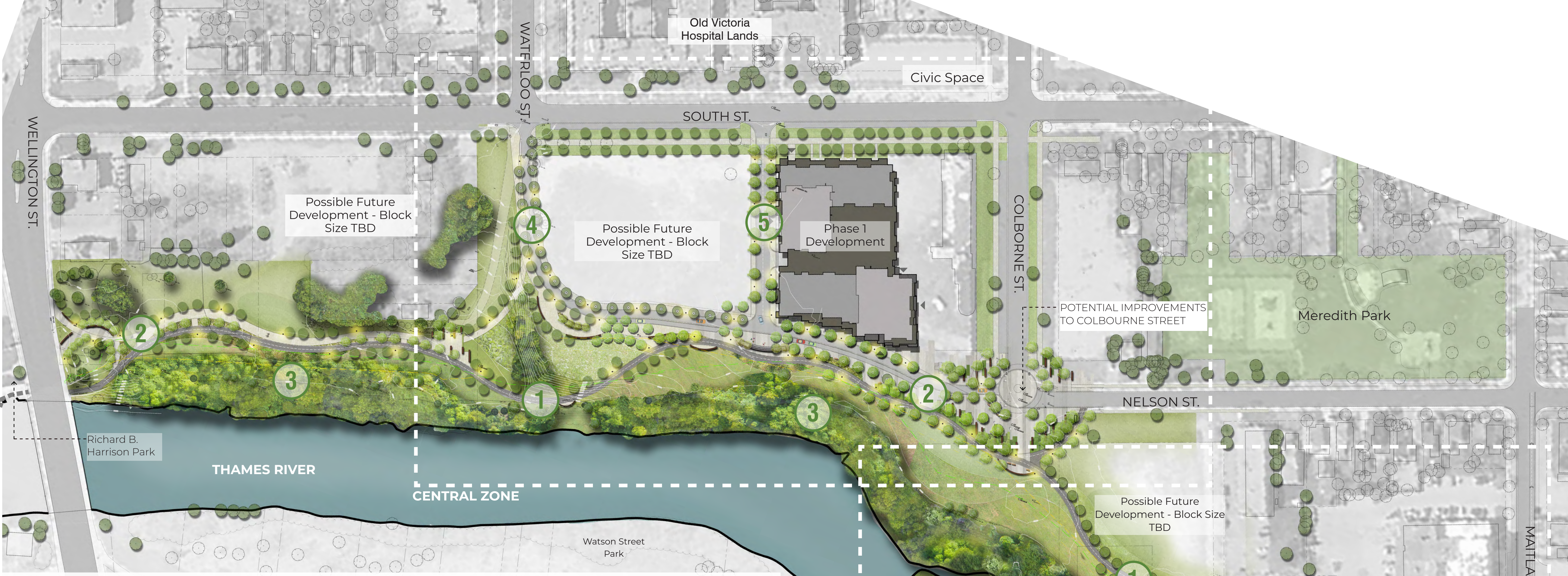
- Between Waterloo to Colborne Street
- 9.0m Wide Shared Corridor is a Flexible Space
- Supports Programming & Events
- Single One Way Drive and Parallel Parking
- Complement Urban Park and TVP
- Incorporate LID Measures to Direct and Manage Storm Water
- Key Entrance Points for Pedestrians & Vehicular Access
- Integrated with Urban Park
- Lighting

# 5 Midblock Connection

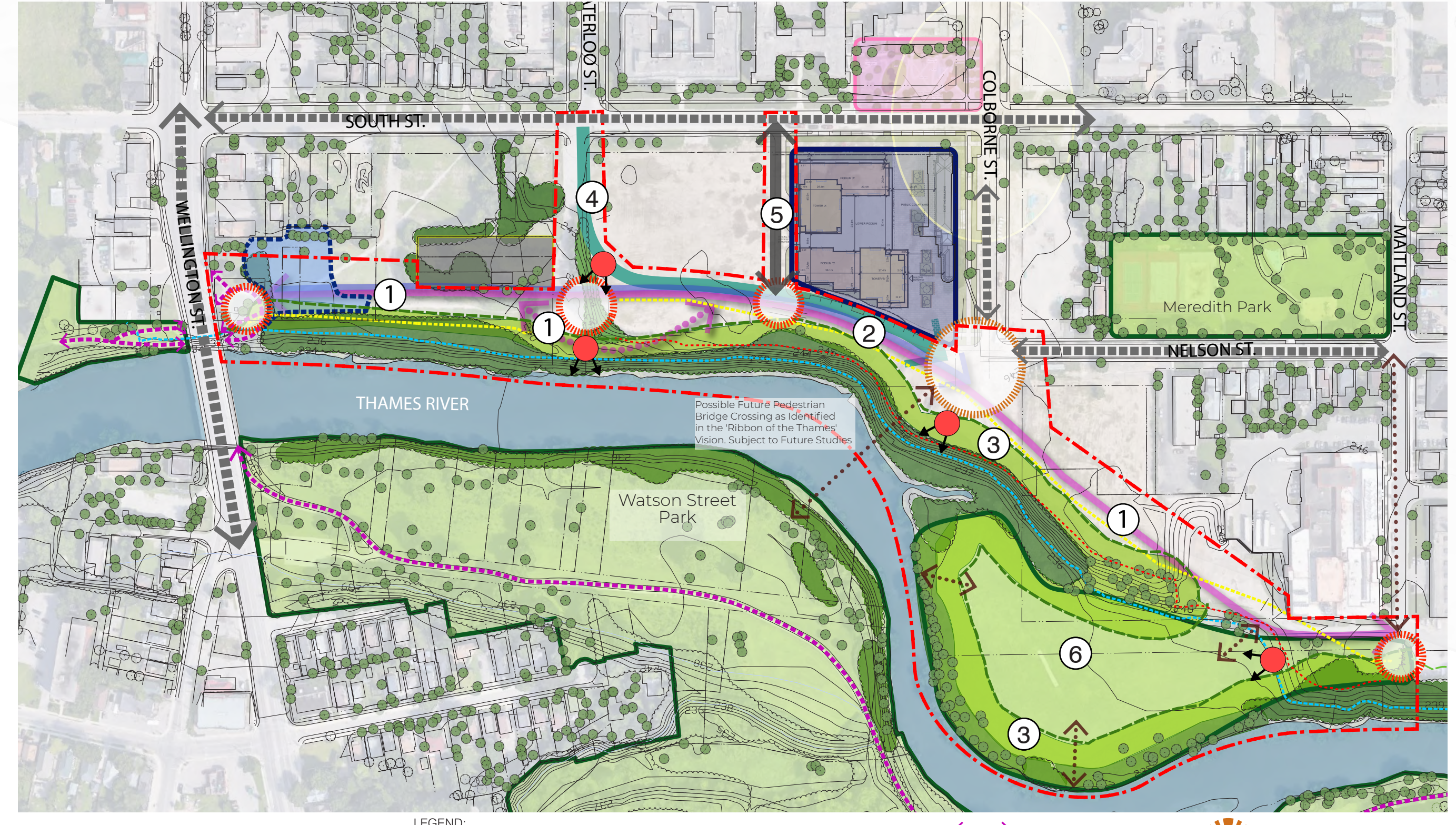
- 12m Right of Way (two-way)
- Asphalt Surface
- Public Municipal Road
- Native Deciduous Tree Planting
- Lighting
- Vehicular and Pedestrian Circulation
- Access to Phase 1 Development

# 6 District Park

- Potential Natural Experiential Playground
- Potential Low Key Pedestrian Connections to Thames River for Canoe Launch
- Opportunity for Community Gardens
- Enhancement of Existing Vegetation

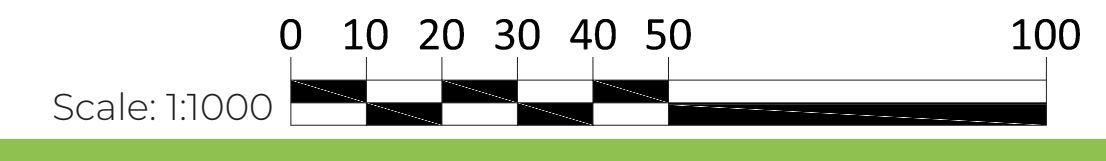


## Proposed Amenities

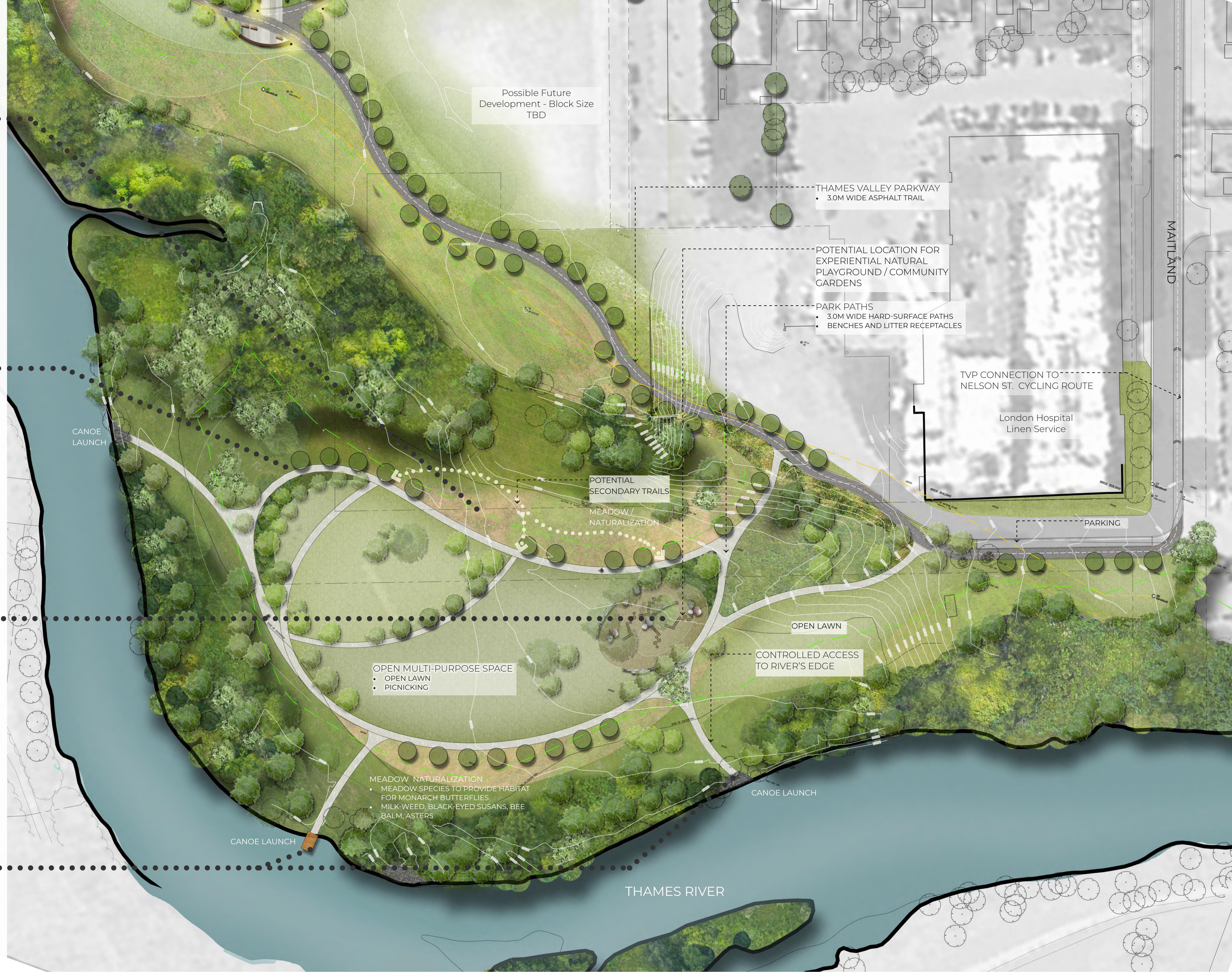


**LEGEND:**

Approximate Site Boundary	Existing Woodland	Existing TVP	Key Urban Park Activity Node
LTSSC Position Plus 6m Erosion Access Allowance	Woodland Enhancement within 30m Tom Buffer (EIS)	Proposed TVP	Secondary Urban Park Node Along TVP
Slope Crest	Existing Park	Potential Pedestrian Linkage / Connection	Potential View / Vista
Regulatory Floodplain Limit	Future Development	Proposed Mid-Block Connection	Four Corners as Identified in QVHL Secondary Plan
Woodland Buffer (EIS)	Proposed Future Civic Space	Existing Vehicular Circulation	
Urban Park Corridor		Proposed Shared Pedestrian / Vehicular Drive	



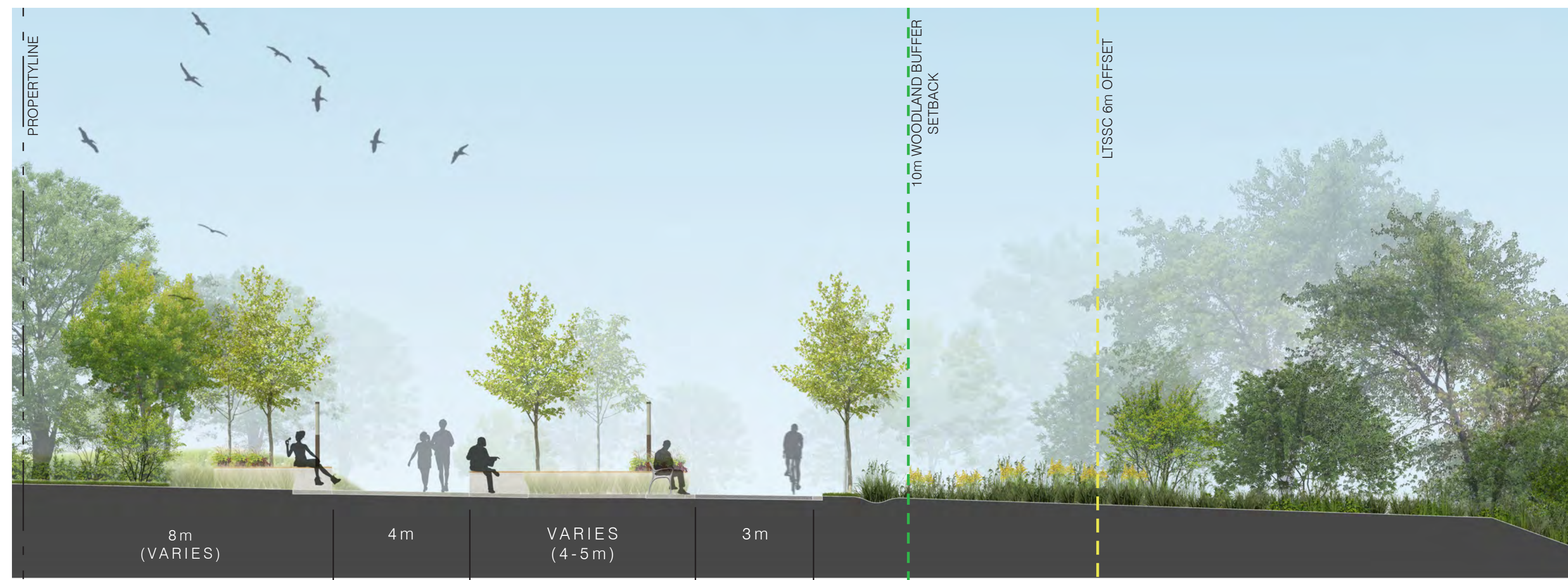




Scale: 1:500

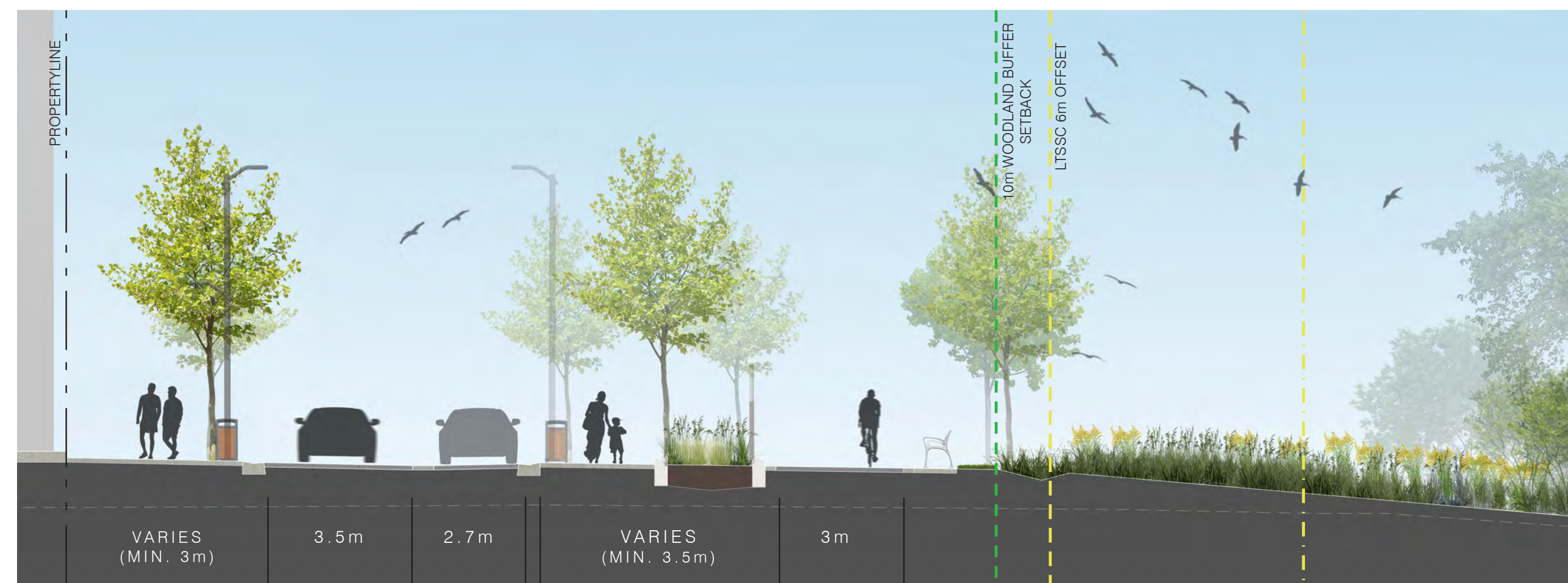






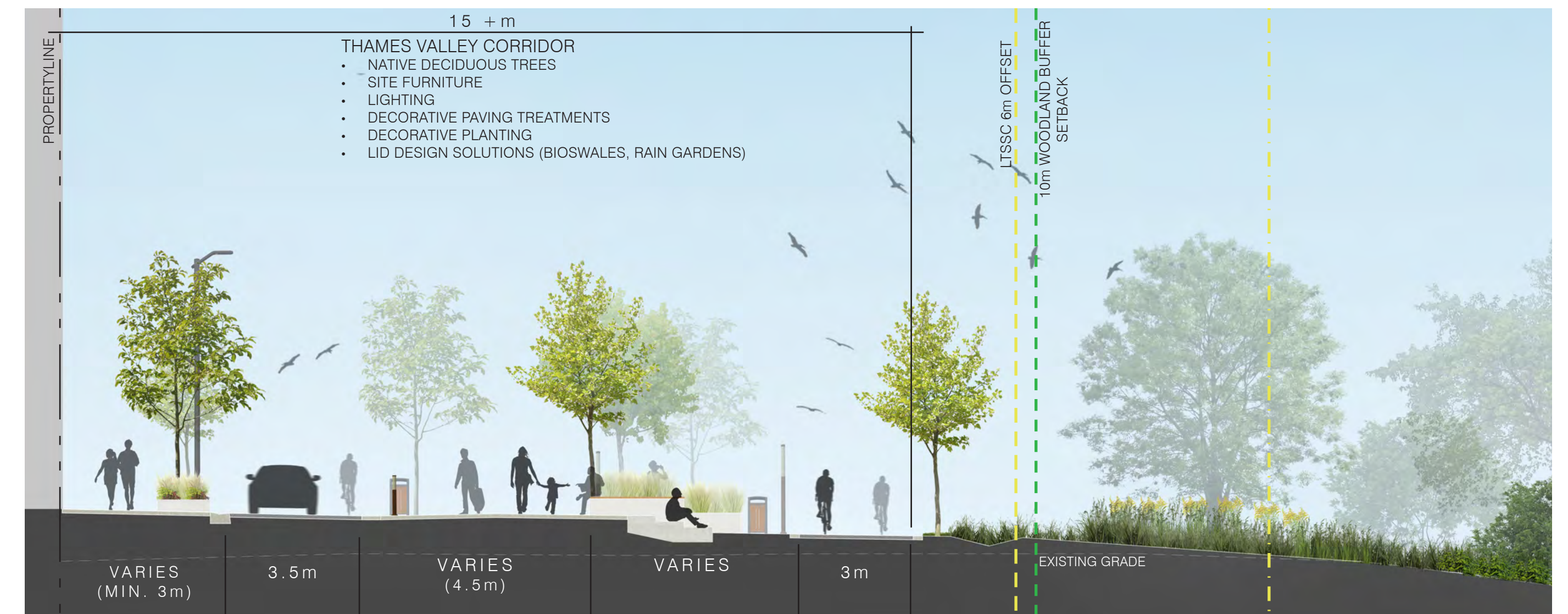
- OPEN SPACE**
  - NATIVE DECIDUOUS TREES
  - DECORATIVE LIGHTING
  - CONNECTION TO PHASE 1 DEVELOPMENT
- URBAN PROMENADE**
- PLAZA AREA / ACTIVITY NODES**
  - NATIVE DECIDUOUS TREES
  - SITE FURNITURE
  - DECORATIVE FEATURE LIGHTING
  - DECORATIVE PAVING TREATMENTS
  - DECORATIVE PLANTING
  - PROGRAMMABLE SPACE
  - OPPORTUNITY FOR INTERPRETIVE SIGNAGE
- MULTI-USE TVP**
- WOODLAND EDGE PLANTING**

### A Urban Promenade Activity Nodes



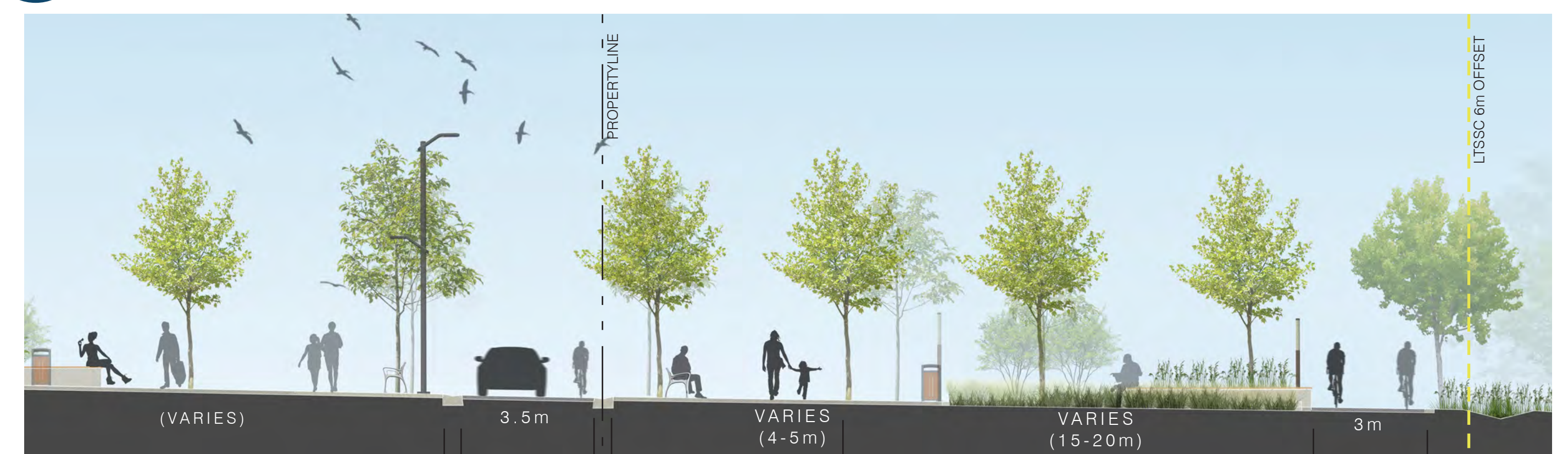
- PEDESTRIAN ZONE**
  - NATIVE DECIDUOUS TREES IN SOIL CELLS
  - SITE FURNITURE
  - LOW PROFILE PLANTERS
  - LIGHTING
- SHARED ZONE**
  - ONE-WAY EAST-BOUND DRIVE LANE
  - PEDESTRIANS
  - CYCLISTS
- PARK LANE**
- PEDESTRIAN ZONE**
  - NATIVE DECIDUOUS TREES IN SOIL CELLS
  - SITE FURNITURE
  - LOW PROFILE PLANTING, RAIN GARDENS
- MULTI-USE TVP**
- WOODLAND EDGE PLANTING**

### C Urban Promenade - Adjacent to TVP



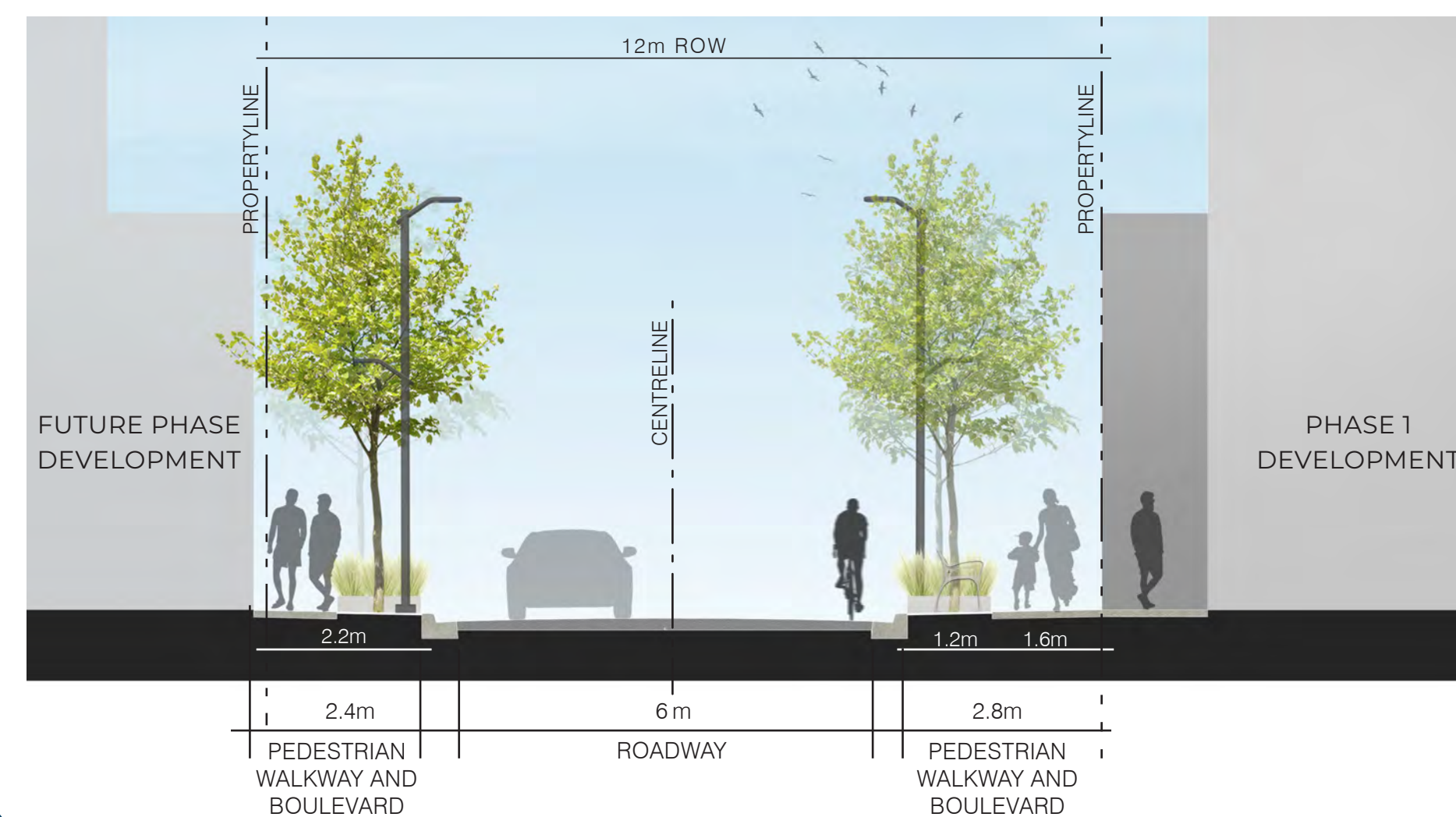
- PEDESTRIAN ZONE**
  - NATIVE DECIDUOUS TREES IN SOIL CELLS
  - SITE FURNITURE
  - LOW PROFILE PLANTERS
  - LIGHTING
- SHARED ZONE**
  - ONE-WAY EAST-BOUND DRIVE LANE
  - PEDESTRIANS
  - CYCLISTS
- PEDESTRIAN ZONE**
  - PEDESTRIAN WALKWAY
  - NATIVE DECIDUOUS TREES IN SOIL CELLS
  - SITE FURNITURE
  - LOW PROFILE PLANTERS
  - LIGHTING
- TERRACED STEPS WITH PLANTERS / DECORATIVE SEATWALLS**
- MULTI-USE TVP**
- WOODLAND EDGE PLANTING**

### B Mid-Block / Shared Driveway Intersection



- PEDESTRIAN ZONE**
  - NATIVE DECIDUOUS TREES IN SOIL CELLS
  - SITE FURNITURE
  - LOW PROFILE PLANTERS
  - LIGHTING
- SHARED ZONE**
  - ONE-WAY EAST-BOUND DRIVE LANE
  - PEDESTRIANS
  - CYCLISTS
- PEDESTRIAN ZONE**
  - PEDESTRIAN WALKWAY
  - NATIVE DECIDUOUS TREES IN SOIL CELLS
  - SITE FURNITURE
  - LOW PROFILE PLANTERS
  - LIGHTING
- URBAN PROMENADE AND PLAZA AREA**
  - NATIVE DECIDUOUS TREES
  - SITE FURNITURE
  - DECORATIVE FEATURE LIGHTING
  - DECORATIVE PAVING TREATMENTS
  - DECORATIVE PLANTING
  - PROGRAMMABLE SPACE
  - OPPORTUNITY FOR INTERPRETIVE SIGNAGE
- MULTI-USE TVP**

### D Central Urban Plaza



### E Mid-Block Connection

**BENCHES**



MAGLIN BENCH



PARC VIEW, LANDSCAPE FORMS

**TRASH RECEPTACLES**



SAGE, BY VICTOR STANLEY



MAGLIN

**BIKE RACKS**



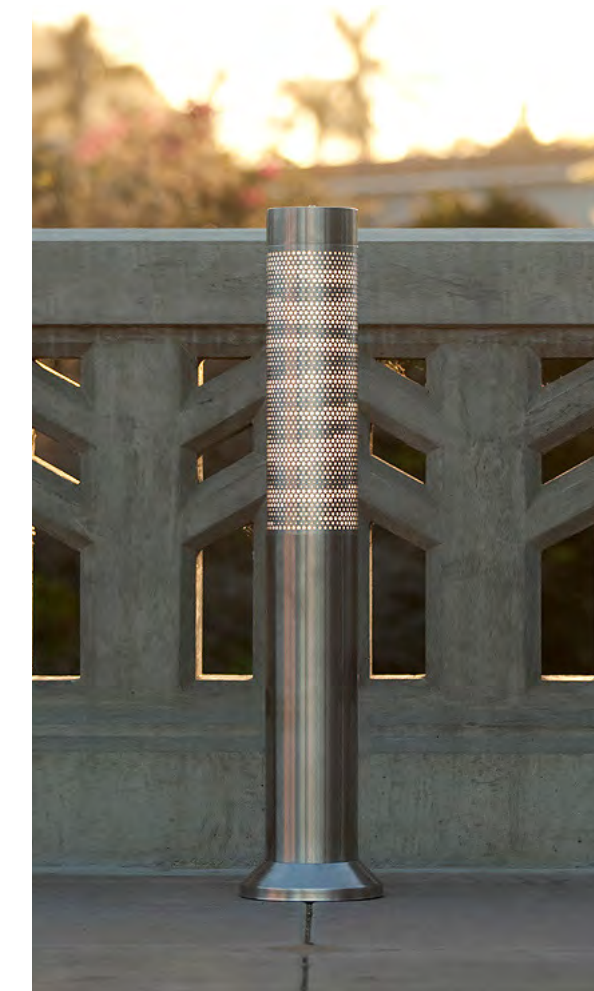
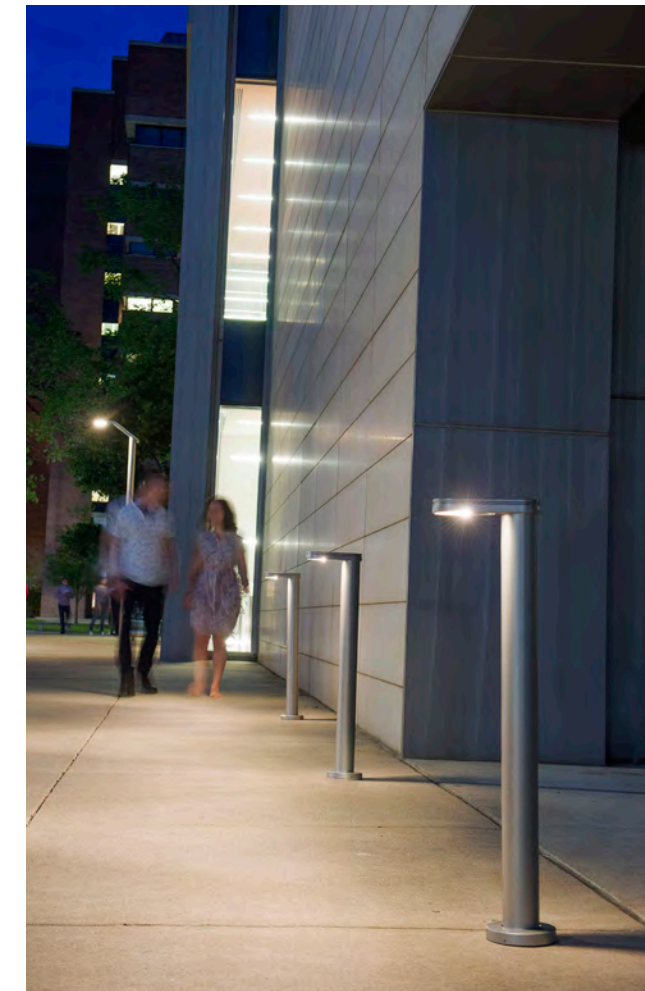
LANDSCAPE FORMS



**PATH LIGHTING & BOLLARDS**



MULTIPLICITY COLLECTION, LANDSCAPE FORMS



FORMS+SURFACES

**URBAN PROMENADE LIGHTING**



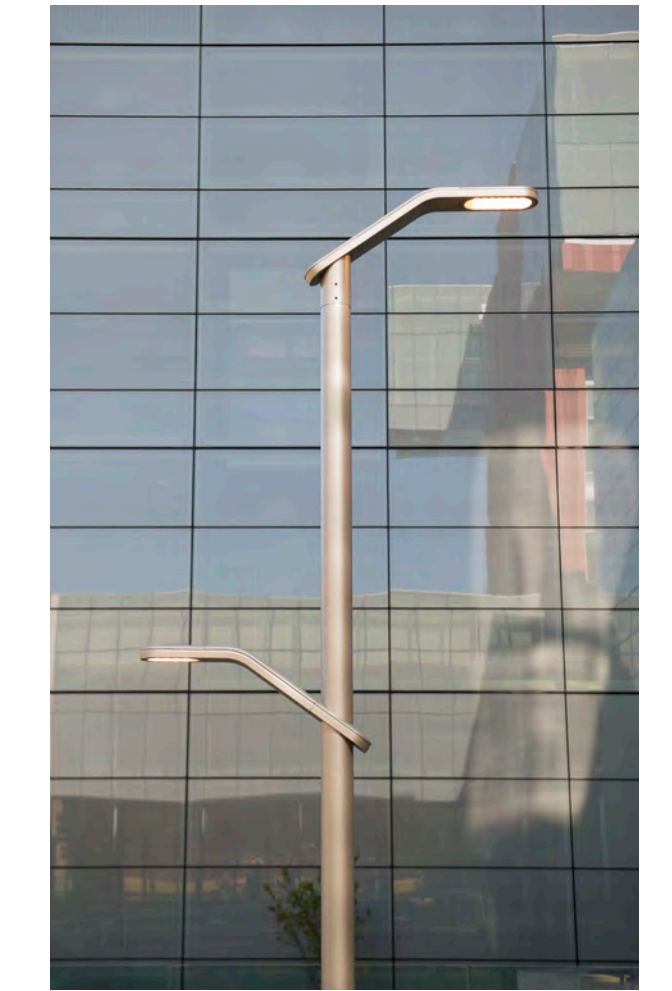
LIGHT COLUMN PEDESTRIAN LIGHTING, FORMS+SURFACES



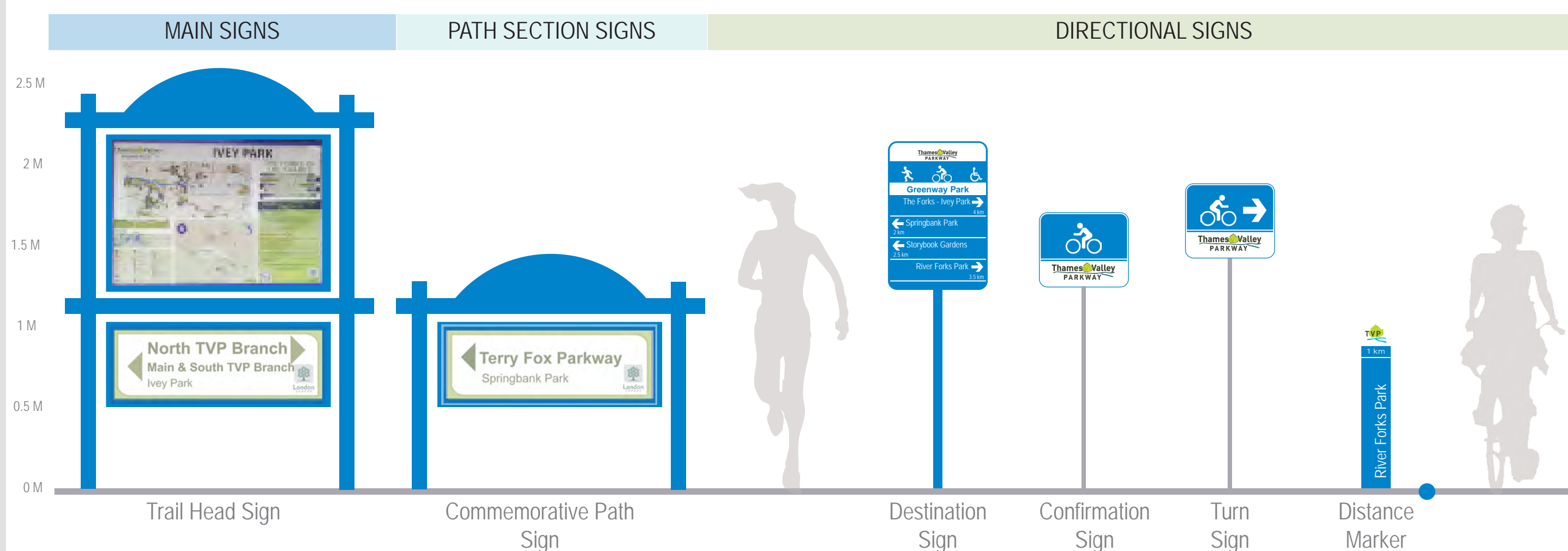
**SHARED DRIVEWAY/MUNICIPAL ROAD LIGHTING**



TORRES COLLECTION, LANDSCAPE FORMS



**THAMES VALLEY PARKWAY SIGNAGE FAMILY**



**ADDITIONAL PATHWAY MARKERS**



PLANTING PALETTE

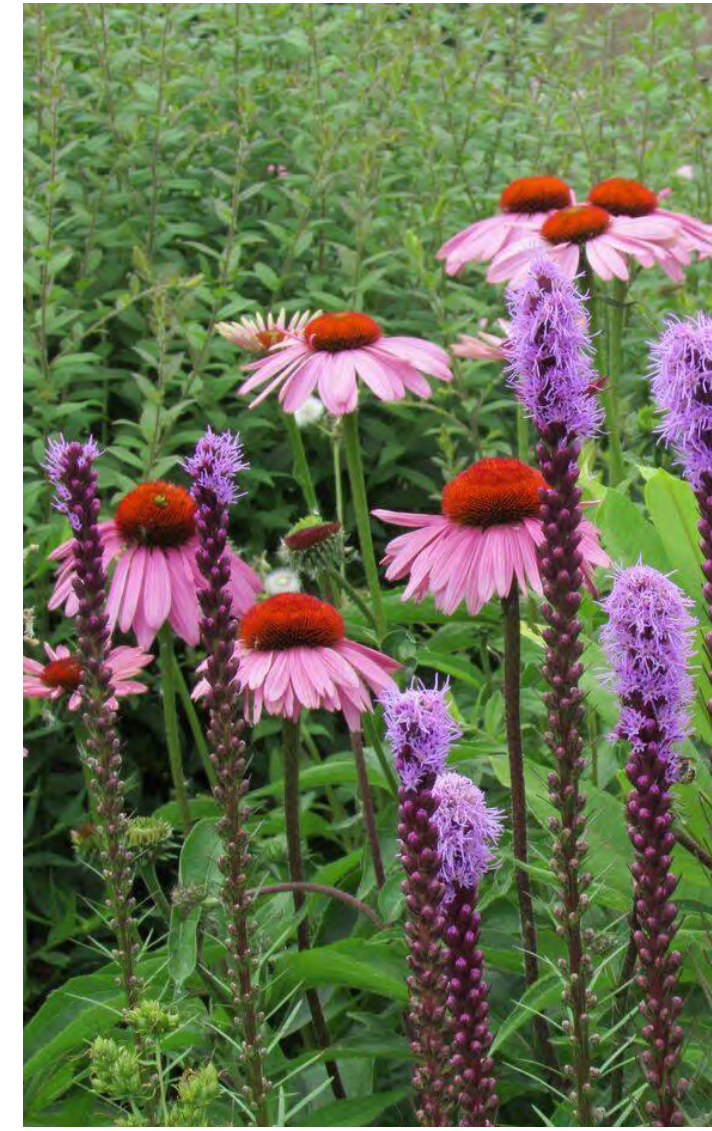
MEADOW AND BIOSWALE PLANTING



NATIVE PERENNIALS AND GRASSES



RAIN GARDEN PLANTING



NATIVE PERENNIALS & POLLINATORS



URBAN PROMENADE AND URBAN PLAZA PLANTING



STREET TREES - COMMON HACKBERRY



SUGAR MAPLE



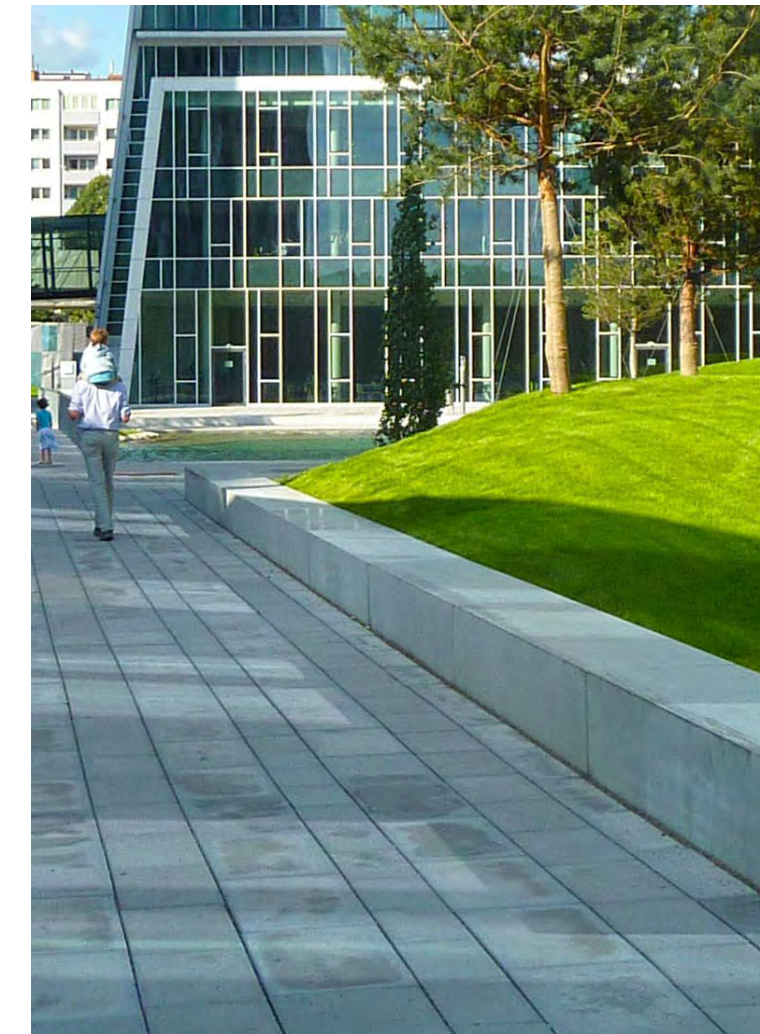
WHITE OAK

SITE FEATURES

DECORATIVE SEATWALLS AND PLANTER WALLS

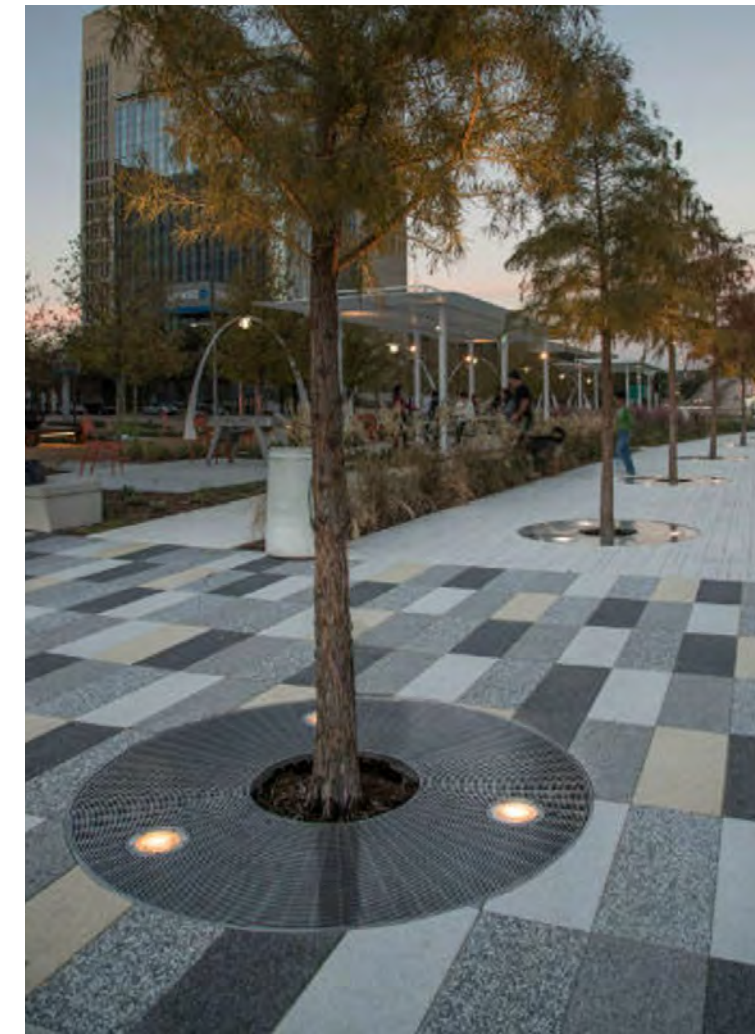


LOW-PROFILE DECORATIVE WALLS



LOW-PROFILE RAIN GARDEN PLANTERS

STREETScape



TREE GRATES



HABITAT CREATION

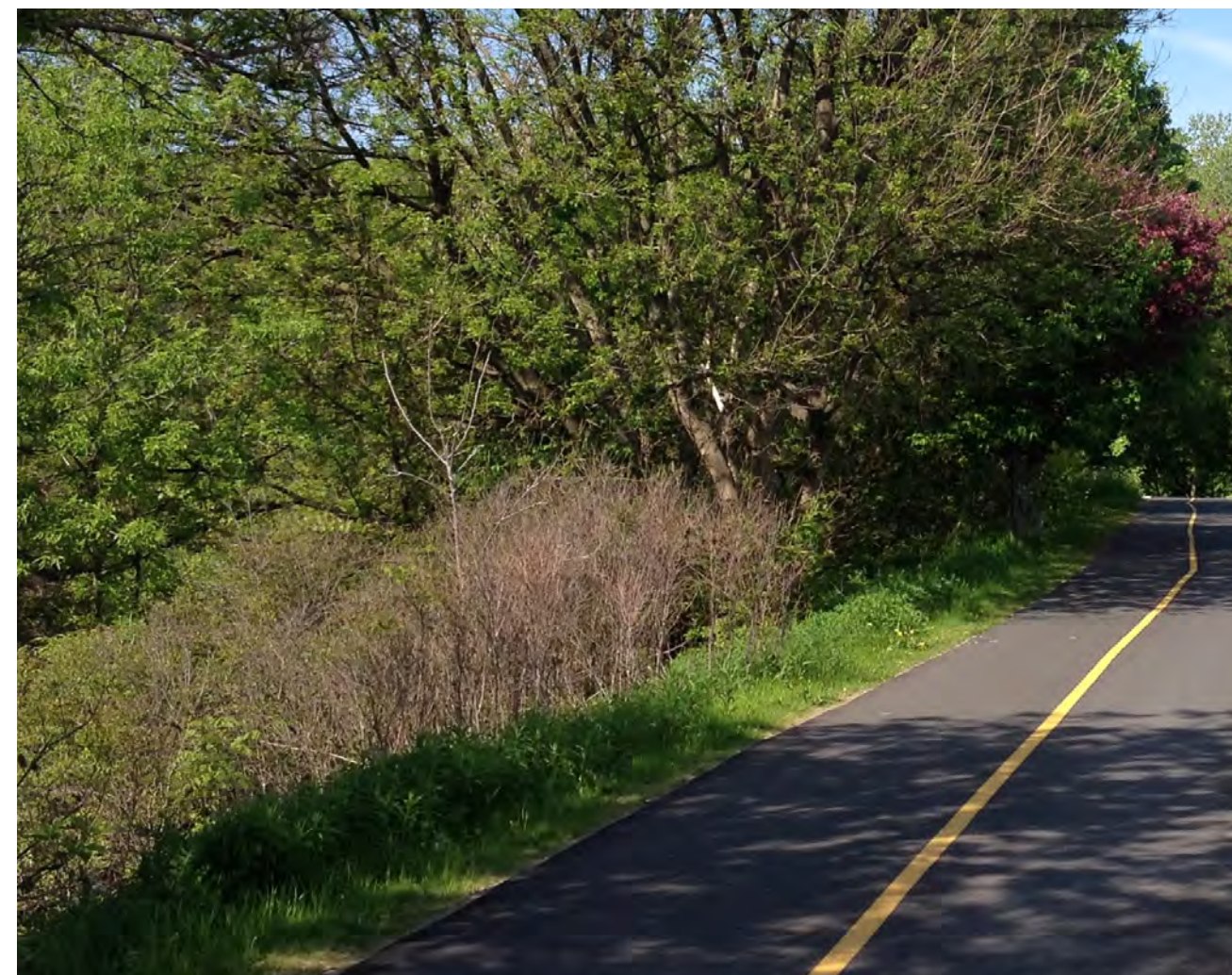


BAT / BIRD BOXES



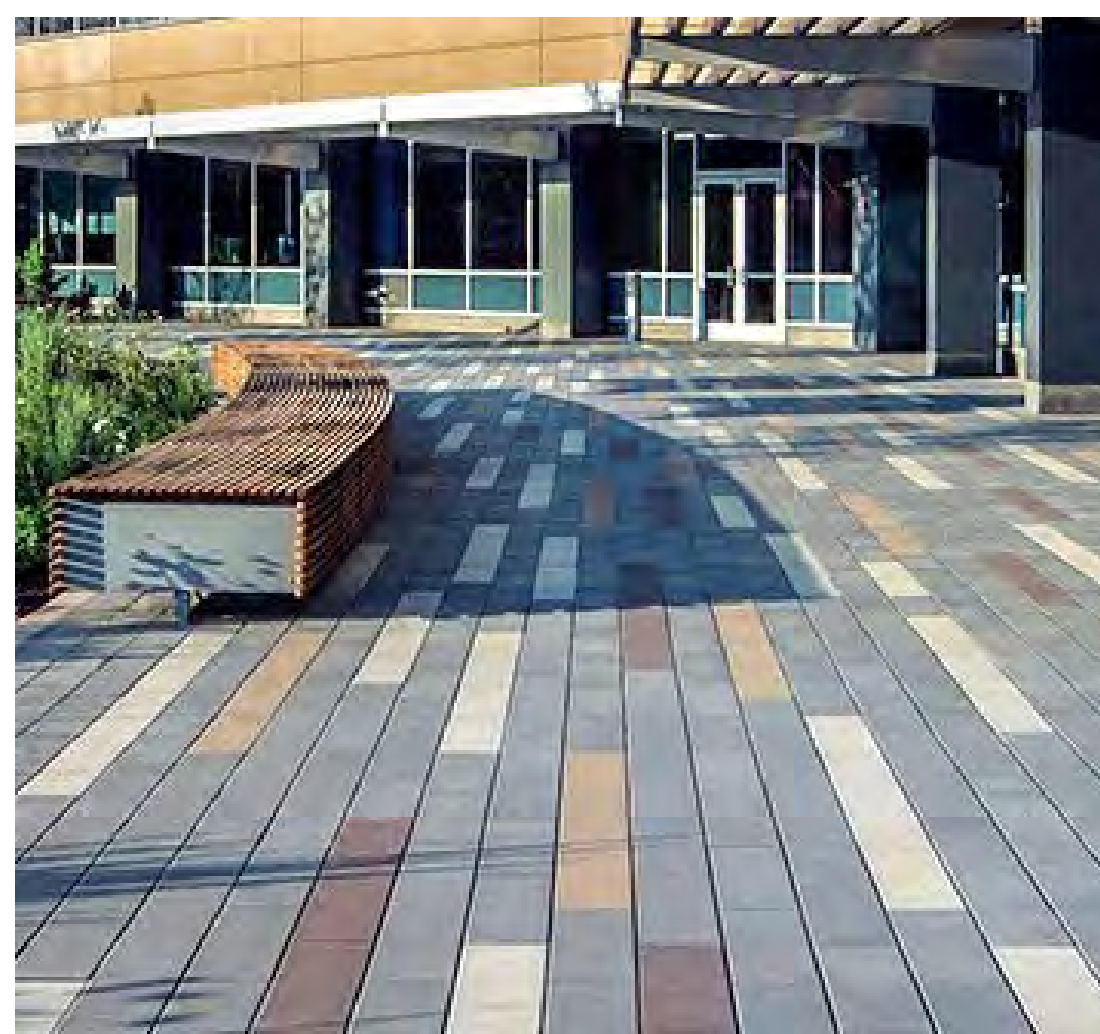
PAVING MATERIALS

THAMES VALLEY PARKWAY



ASPHALT PATH

URBAN PROMENADE AND SHARED DRIVEWAY OPTIONS



UNIT PAVING WITH ACCENT COLOURS/SHADES IN SPECIAL ZONES



DECORATIVE CONCRETE - EXPOSED AGGREGATE FOR ACCENTS AND PATTERNING IN SPECIAL ZONES





SCALE 1:800

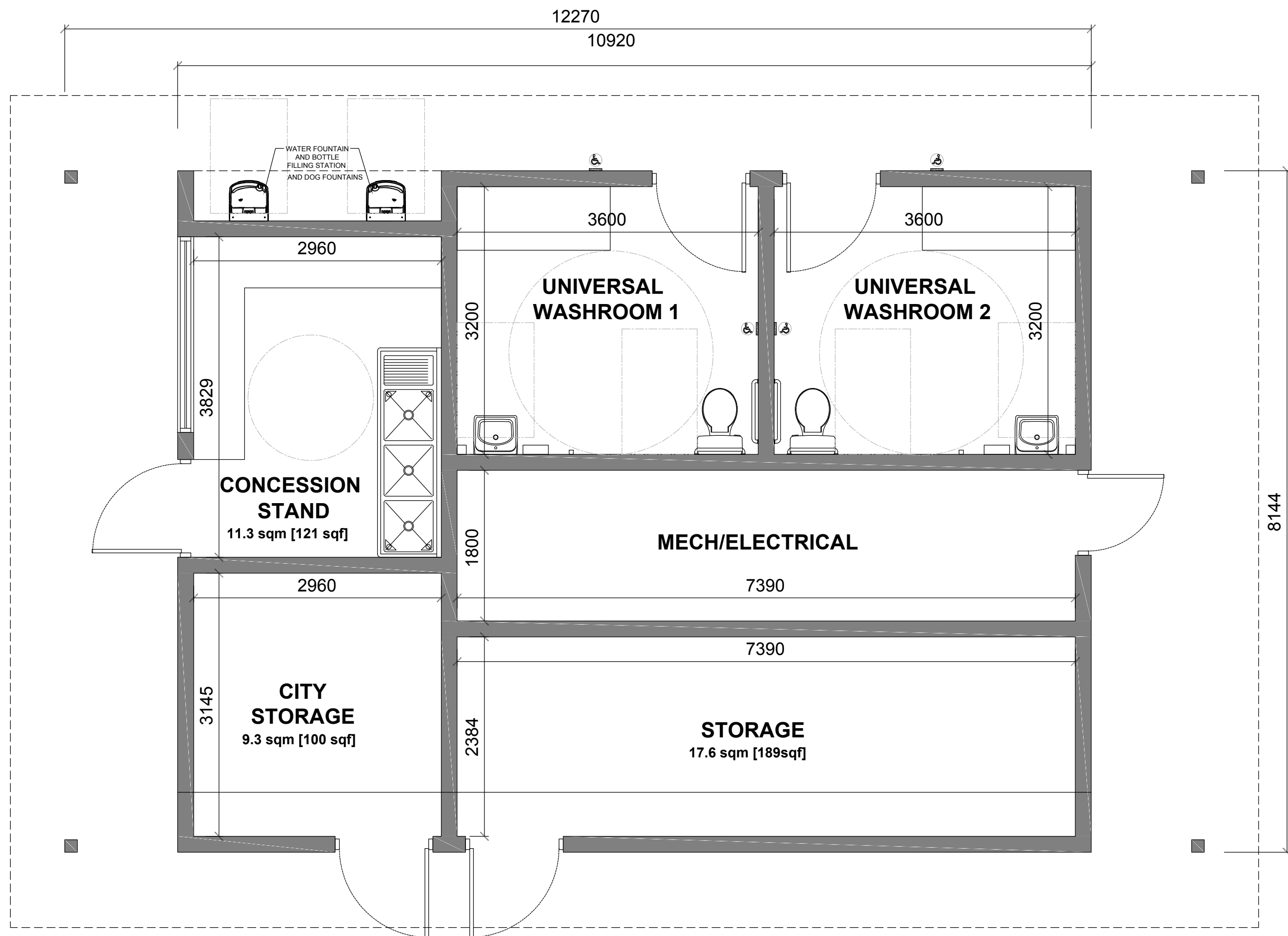
LEGEND (KEYS)					
1	BANTAM BASEBALL DIAMOND	4	PARK ENTRANCE	7	PLAY AREA
2	CRICKET PITCH	5	ASPHALT ROADWAY/PARKING LOT	8	GRANULAR PARKING LOT
3	MINI SOCCER FIELD	6	FIELD HOUSE	9	3m WIDE ASPHALT WALKWAY
				10	CONCRETE PAVING
				11	ESA BUFFER ENHANCEMENT
				12	ESA BUFFER
				13	L.I.D. AREAS (RAIN GARDENS - NATURALIZED AREAS)
				14	PROPOSED GRANULAR TRAIL
				15	BATTING CAGE

# KILALLY FIELDS

CONCEPT PLAN  
1400 Adelaide St N

PLEASE NOTE: THIS IS A CONCEPTUAL DESIGN.  
FINAL LOCATIONS MAY VARY.

January 2019



**01 floor plan**

NTS

**TOTAL AREA  
BUILDING 87.1 sqm [937 sqf]**

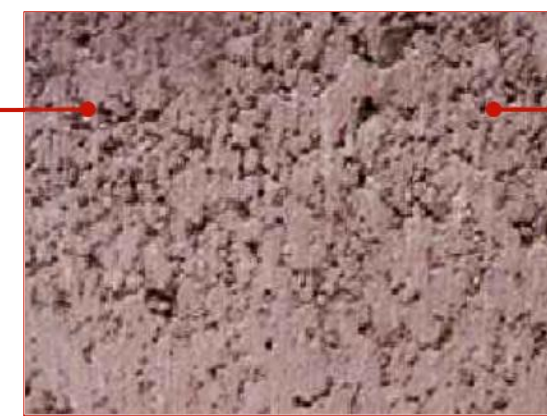
**ARCHITECTURAL  
DESIGN ELEMENTS  
& MATERIALS**



STANDING SEAM METAL ROOF



STAINLESS STEEL BUILDING SIGN



DARK CONC. MASONRY



LIGHT CONC. MASONRY



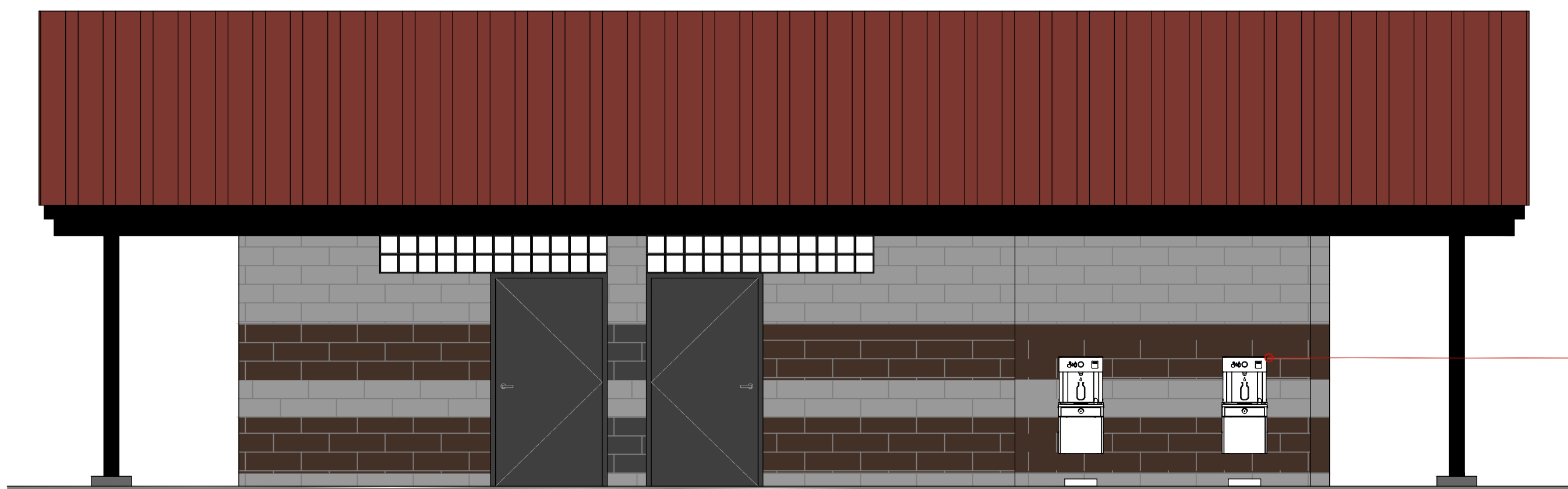
**03 south elevation**

NTS



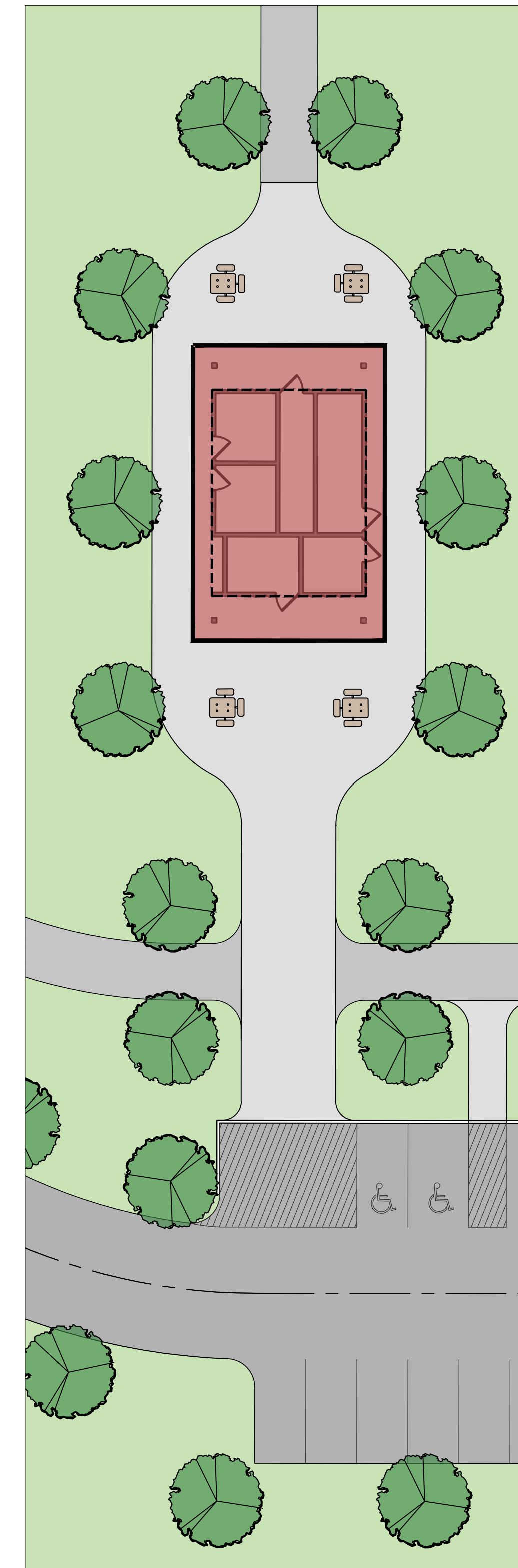
**04 north elevation**

NTS



**02 west elevation**

NTS



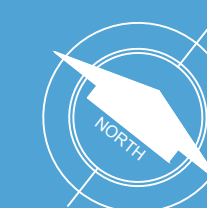
**05 field house  
enlargement**

SCALE 1:200

**KILALLY FIELDS**

ARCHITECTURAL  
1400 Adelaide St N

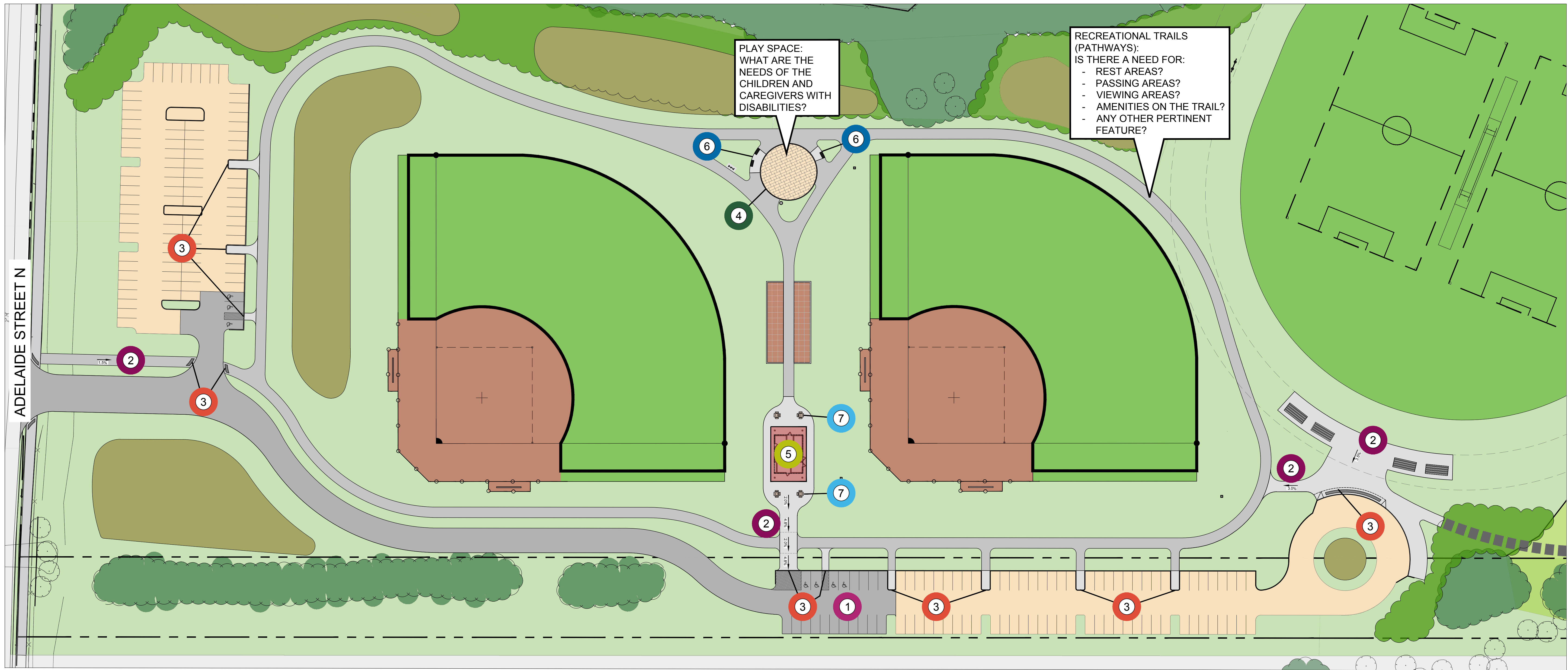
PLEASE NOTE: THIS IS A CONCEPTUAL DESIGN.  
FINAL LOCATIONS MAY VARY.



January 2019



London  
CANADA



**LEGEND**  
(KEYS)

- 1 ACCESSIBLE PARKING
- 2 2-3m WALKWAY (< 5% GRADIENT)
- 3 CURB RAMP WITH TACTILE WALKING STRIP
- 4 PLAYGROUND DEPRESSED CURB
- 5 FIELDHOUSE WITH ACCESSIBLE WASHROOMS
- 6 BENCHES WITH ACCESSIBLE SPACE TO THE SIDE
- 7 ACCESSIBLE PICNIC TABLES

SCALE 1:500



# KILALLY FIELDS

ACCESSIBILITY  
1400 Adelaide St N

PLEASE NOTE: THIS IS A CONCEPTUAL DESIGN. FINAL LOCATIONS MAY VARY.



January 2019



# Accessibility Advisory Committee

## Report

10th Meeting of the Accessibility Advisory Committee  
November 29, 2018  
Committee Room #4

Attendance                   PRESENT: J. Madden (Chair), M. Cairns, M. Dawthorne, A. Forrest, N. Judges, J. Menard and P. Moore and J. Bunn (Secretary)

ABSENT: L. Chappell, J. Higgins, F. Simmons and P. Quesnel

ALSO PRESENT: D. Baxter, G. Bridges, V. Kinsley, K. Koltun, A. Macpherson, J. Michaud, M. Stone and R. Wilcox

The meeting was called to order at 3:00 PM.

### 1. Call to Order

#### 1.1 Disclosures of Pecuniary Interest

That it BE NOTED that no pecuniary interests were disclosed.

### 2. Scheduled Items

#### 2.1 Community Diversity and Inclusion Strategy (CDIS) Update

That it BE NOTED that the following items were received with respect to the Community Diversity and Inclusion Strategy (CDIS):

- a verbal delegation from R. Wilcox, Director, Community and Economic Innovation, and S. Lewkowitz;
- Municipal Council resolution letter from its meeting held on October 16, 2018; and,
- a staff report dated October 10, 2018, from R. Wilcox, Director, Community and Economic Innovation.

#### 2.2 Facility Accessibility Design Standards/Corporate Accessibility Design

That it BE NOTED that the attached presentation from M. Stone, Supervisor I, Policy Development, with respect to Facility Accessibility Design Standards (FADS)/City of London Accessible Design Standards (CADS), was received.

#### 2.3 Autism Spectrum Disorder

That it BE NOTED that a verbal delegation from D. Baxter, Manager, Policy and Planning Support, with respect to what programs and accommodations are in place in City of London facilities to assist individuals with Autism Spectrum Disorder, was received.

### 3. Consent

#### 3.1 9th Report of the Accessibility Advisory Committee

That it BE NOTED that the 9th Report of the Accessibility Advisory Committee, from its meeting held on October 25, 2018, was received.

- 3.2 Municipal Council Resolution - Recruitment and Appointment of Advisory Committee Members for the Up-Coming Term
- That it BE NOTED that the Municipal Council resolution from its meeting held on November 20, 2018, with respect to the recruitment and appointment of Advisory Committee members for the up-coming term, was received.
- 3.3 Municipal Council Resolution - 9th Report of the Accessibility Advisory Committee
- That part c) of the Municipal Council resolution letter, from its meeting held on November 20, 2018, with respect to the 9th Report of the Accessibility Advisory Committee, BE REFERRED to the Education and Awareness Sub-Committee for review; it being noted that the remainder of the above-noted resolution letter was received.
- 3.4 Notice of Public Information Centre No.1 - Adelaide Street North Municipal Class Environmental Assessment Study
- That it BE NOTED that the Notice of Public Information Centre No. 1, from H. Huotari, Parsons Inc. and M. Davenport, City of London, with respect to the Adelaide Street North Municipal Class Environmental Assessment Study, was received.
- 3.5 ReThink Zoning Draft Terms of Reference
- That the Memo dated October 31, 2018, from J. Adema, Planner II, with respect to the ReThink Zoning Draft Terms of Reference, BE REFERRED to the Policy Sub-Committee for a review.
- 3.6 Letter of Resignation - K. Ramer
- That it BE NOTED that the letter of resignation from the Accessibility Advisory Committee, dated November 12, 2018, from K. Ramer, was received.
- 3.7 Letter of Resignation - K. Schmidt
- That it BE NOTED that the letter of resignation from the Accessibility Advisory Committee from K. Schmidt, was received.
- 3.8 Annual Accessibility Report 2017 – Multi-Year Accessibility Plan
- That it BE NOTED that the City of London 2013-2017 Multi-Year Accessibility Plan Annual Status Update Report 2017, was received.
- 3.9 London Community Gardens Program Strategic Plan and Accessibility Update
- That it BE NOTED that the staff report dated November 13, 2018, from L. Livingstone, Managing Director, Neighbourhood, Children and Fire Services, with respect to the London Community Gardens Program Strategic Plan and Accessibility Update, was received.



**4. Sub-Committees and Working Groups**

4.1 (ADDED) Education and Awareness Sub-Committee Report

That it BE NOTED that the Education and Awareness Sub-Committee Report, from its meeting held on November 20, 2018, was received.

**5. Items for Discussion**

5.1 Accessible Election Plan Update November 2018

That the Accessible Election Plan Update, dated November 21, 2018, with respect to the City of London 2018 Municipal Election, BE REFERRED to the Policy Sub-Committee for review.

5.2 Council Signage

That it BE NOTED that the mock-up document of the new accessible signage for the Council Chambers at City Hall, submitted by M. Stone, Supervisor I, Policy Development, was received.

5.3 2018-2021 Multi-Year Accessibility Plan

That the 2018-2021 Multi-Year Accessible Plan document, that was distributed to the Accessibility Advisory Committee members separately, BE REFERRED to the Policy Sub-Committee for review.

5.4 Next Meeting Date

That it BE NOTED that the next meeting of the Accessibility Advisory Committee will be held on January 24, 2018.

**6. Deferred Matters/Additional Business**

6.1 Deferred Matters List

That it BE NOTED that the revised ~~attached~~ Accessibility Advisory Committee Deferred Matters List, was received.

6.2 (ADDED) Letter Regarding the Advisory Committee Review

That the matter of a communication with respect to the review of the Advisory Committees to be sent to the Deputy City Clerk BE REFERRED to the Policy Sub-Committee for review.

**7. Adjournment**

The meeting adjourned at 4:55 PM.