

# Agenda Including Addeds

## Cycling Advisory Committee

2nd Meeting of the Cycling Advisory Committee

January 16, 2019, 4:00 PM

Committee Room #4

The City of London is committed to making every effort to provide alternate formats and communication supports for Council, Standing or Advisory Committee meetings and information, upon request. To make a request for any City service, please contact [accessibility@london.ca](mailto:accessibility@london.ca) or 519-661-2489 ext. 2425.

	Pages
<b>1. Call to Order</b>	
1.1 Disclosures of Pecuniary Interest	
<b>2. Scheduled Items</b>	
2.1 4:00 PM Dillon Consulting - Wonderland Road Class Environmental Assessment Study	
2.2 4:15 PM E. Conway-Project Coordinator-Thames Valley Corridor: SOHO	3
2.3 4:30 PM J. Stanford, Director-Environment, Fleet and Solid Waste and A. Miller, Co-ordinator Transport Demand Management-Update on Bike Share Activities and Development of Business Case	
2.4 4:45 PM P. Kavcic-Transportation Design Engineer-East-West Bikeway Evaluation	
<b>3. Consent</b>	
3.1 1st Report of the Cycling Advisory Committee	13
3.2 West London Dyke Erosion Control-Municipal Class Environmental Assessment-Notice of Study Completion	15
3.3 Notice of Planning Application - Official Plan Amendment - Victoria Park Secondary Plan	16
3.4 Bicycle Lane over Blackfriars Bridge - M. Temme	19
3.5 Greg Cunroe Tunnel Repairs (6-PT-02) Horton Street to Evergreen Avenue Under CN Rail - Tender No. RFT-18-22	20
<b>4. Sub-Committees and Working Groups</b>	
<b>5. Items for Discussion</b>	
5.1 <i>(ADDED) Budget</i>	
<b>6. Deferred Matters/Additional Business</b>	

## 7. Adjournment

Next Meeting Date: February 20, 2019

## SoHo Thames Valley Corridor Project

Date January 8 2019

For: Cycling Advisory Committee

From: Eric Conway, Project Coordinator, Environmental and Parks Planning

Kathryn Preston, Associate, Dillon Consulting Limited

### Introduction to Project

This project is a major component of the redevelopment of the Old Victoria Hospital Lands (OVHL). The site is generally bound Wellington Street to the west, South Street to the north, Maitland and Colborne Street to the east and the South Branch of the Thames River to the South. Much of the site was part of the OVHL that plans for residential intensification along South Street and throughout the community.

### Project Site



### Goal

Create a park system along the north side of the Thames River throughout the SoHo Community.

### Supporting Background Studies

Geotechnical Reports (establishing the long term stable slope and erosion access allowance)

Record of Site Condition (reviewed past uses and contamination surveys)

Environmental Impact Study (includes recommendation for woodland buffers)

### Planning and Cycling Context

This project is a product of the Soho Community Improvement Plan and the Old Victoria Hospital Lands Secondary Plan (2014). Lots of public engagement opportunities were facilitated to help identify the long term redevelopment opportunities for the area. Wellington Road is identified as a Rapid Transit Corridor. Nelson Street is a signed east-west bicycle route and Colborne Street has bicycle lanes. The Thames Valley Corridor continues to the west of the site and connections with Harris Park and

### Project Features (see panels enclosed)

Created a new section of the Thames Valley Parkway from Wellington to Maitland

Provide a Mid-Block Connection from South Street to TVP

Build an urban promenade from Wellington to Colborne (probably constructed in phases) along TVP.

Create an urban park at the intersection of Colborne and Nelson as a gateway to the corridor.

Creation of a park driveway (including parking and sidewalks) extension from Waterloo to intersection of Colborne and Nelson (including parking).

Redevelopment of Wellington Valley Park (currently law, previously used for cricket)\

**Engagement so Far**

First PIC in Nov 2018 (about 80 people in attendance and 30 surveys completed) November 28

Letter and post cards prior to PIC mailed to SoHo Community Members

Survey at PIC and online with Get Involved London webpage.

Met with SoHo Community Association

Met with representative from N' Amerind.

**Summary of Feedback Received**

Environmental and naturalization opportunities are most important.

Playground and passive recreation opportunities over active play areas.

Gardens for food, pollinators and native flora should be included throughout.

**Other Projects in Area**

SoHo Civic Space (northwest corner of Colborne and South)

Back to the River

**Timeline & Next Steps**

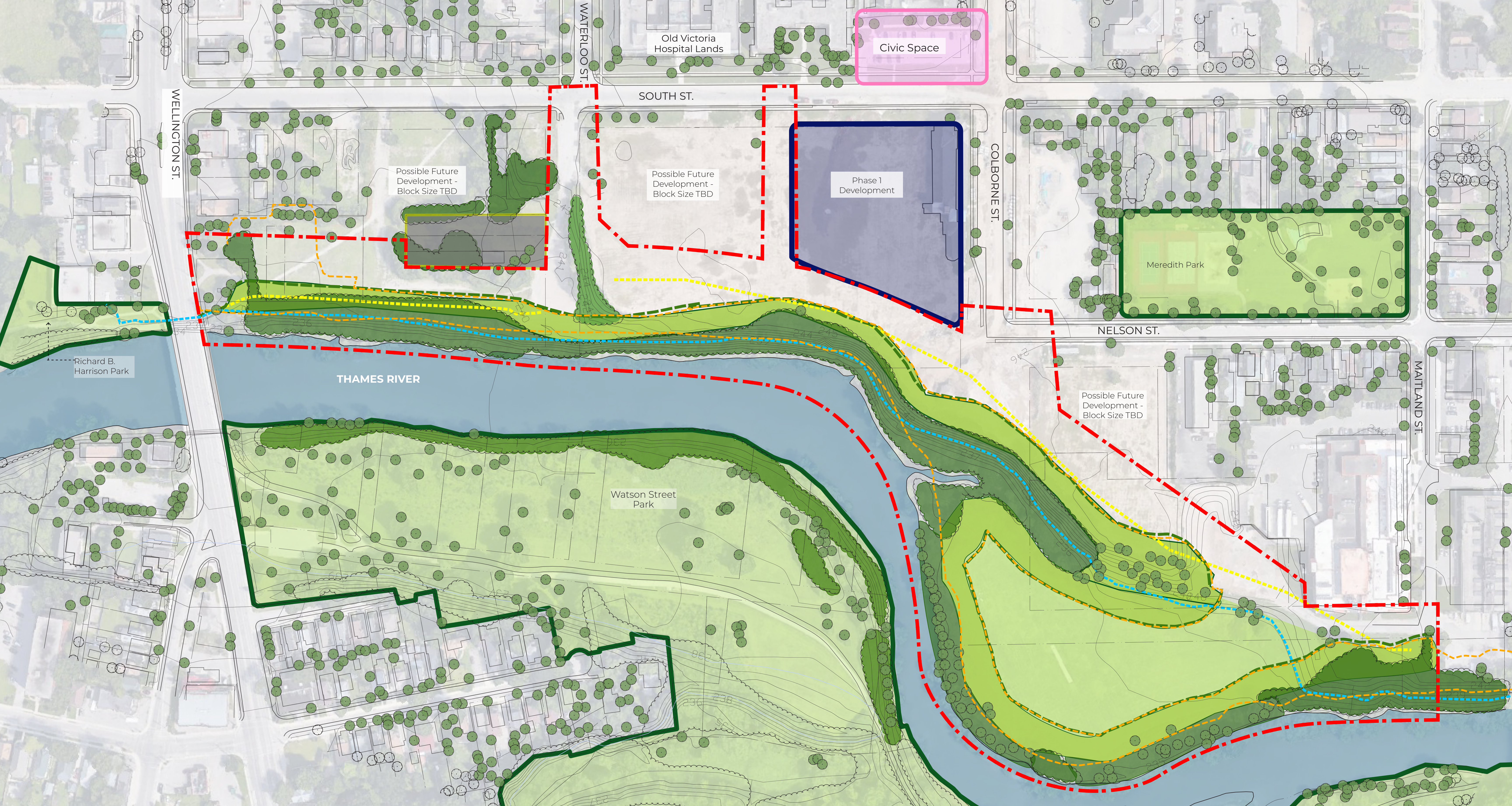
Second PIC Scheduled (tentatively) for March 2019

Detailed Design phase in fall through winter of 2019/2020

Construction 2020 (tentative)

Detailed Geotechnical work (spring 2019) for built feature (pathway and other paved components)

*Enclosed are the panels that were prepared for the November 28 Public Information Centre.*



# Development Setbacks

- LEGEND:**
- - - Approximate Site Boundary
  - - - Regulatory Flooplain Limit
  - - - 15m Riverline Buffer (EIS)
  - - - Woodland Buffer (EIS)
  - - - LTSSC Position Plus 6m Erosion Access Allowance
  - Existing Woodland
  - Woodland Enhancement within min. 10m Buffer (EIS)
  - Existing Park or Open Green Space
  - Private Property Blocks
  - Future Development
  - Proposed Future Civic Space



# 1 Thames Valley Parkway

- 3.0m Wide Multi-use Pathway
- Connection to Neighbourhood ROW's, Existing TVP and Amenities
- Accommodate Potential Widening of Wellington Street and Bridge

# 2 Urban Park Corridor

- Between Wellington and Colborne Street
- Public Gathering Spaces
- Enhanced Key Entrance Points to Thames Valley Corridor
- Lighting
- Improve Key Sight Lines / Views through Potential Selective Removal of Invasive Trees and Shrubs
- Support Recommendations / Restrictions identified in EIS

# 3 Ecological Enhancements

- Enhancements to Existing Woodland (per EIS)
- Enhancements to Woodland Buffers (per EIS)
- Invasive Species Management
- Enhancements to Turtle Nesting Habitat
- Enhancement of Existing Vegetation

# 4 Shared Pedestrian / Vehicular Drive

- Between Waterloo to Colborne Street
- 9.0m Wide Shared Corridor is a Flexible Space
- Supports Programming & Events
- Single One Way Drive and Parallel Parking
- Complement Urban Park and TVP
- Incorporate LID Measures to Direct and Manage Storm Water
- Key Entrance Points for Pedestrians & Vehicular Access
- Integrated with Urban Park
- Lighting

# 5 Midblock Connection

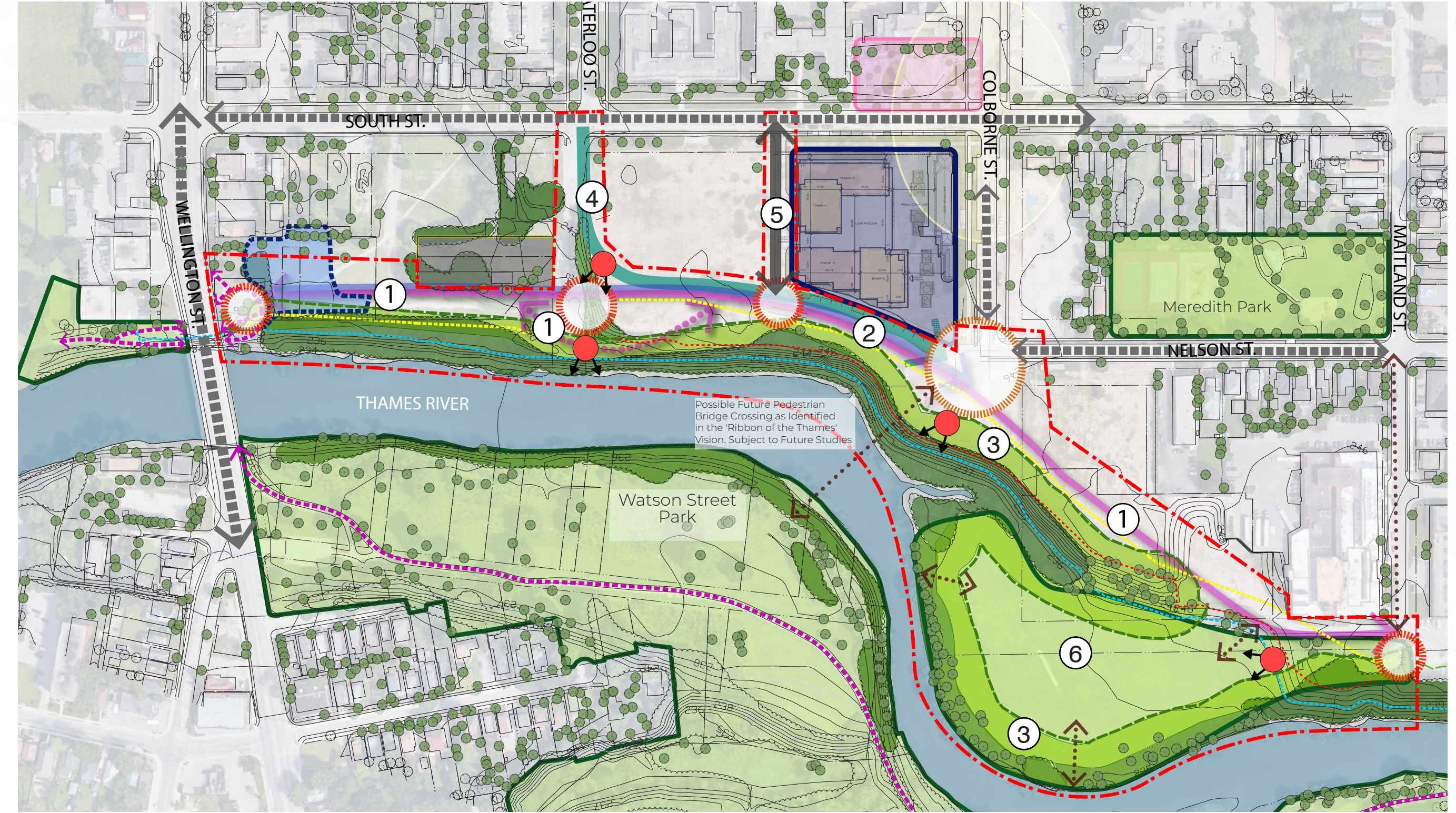
- 12m Right of Way (two-way)
- Asphalt Surface
- Public Municipal Road
- Native Deciduous Tree Planting
- Lighting
- Vehicular and Pedestrian Circulation
- Access to Phase 1 Development

# 6 District Park

- Potential Natural Experiential Playground
- Potential Low Key Pedestrian Connections to Thames River for Canoe Launch
- Opportunity for Community Gardens
- Enhancement of Existing Vegetation

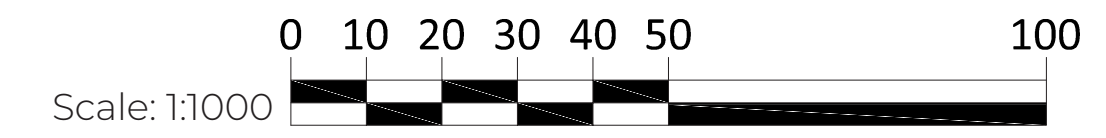


## Proposed Amenities

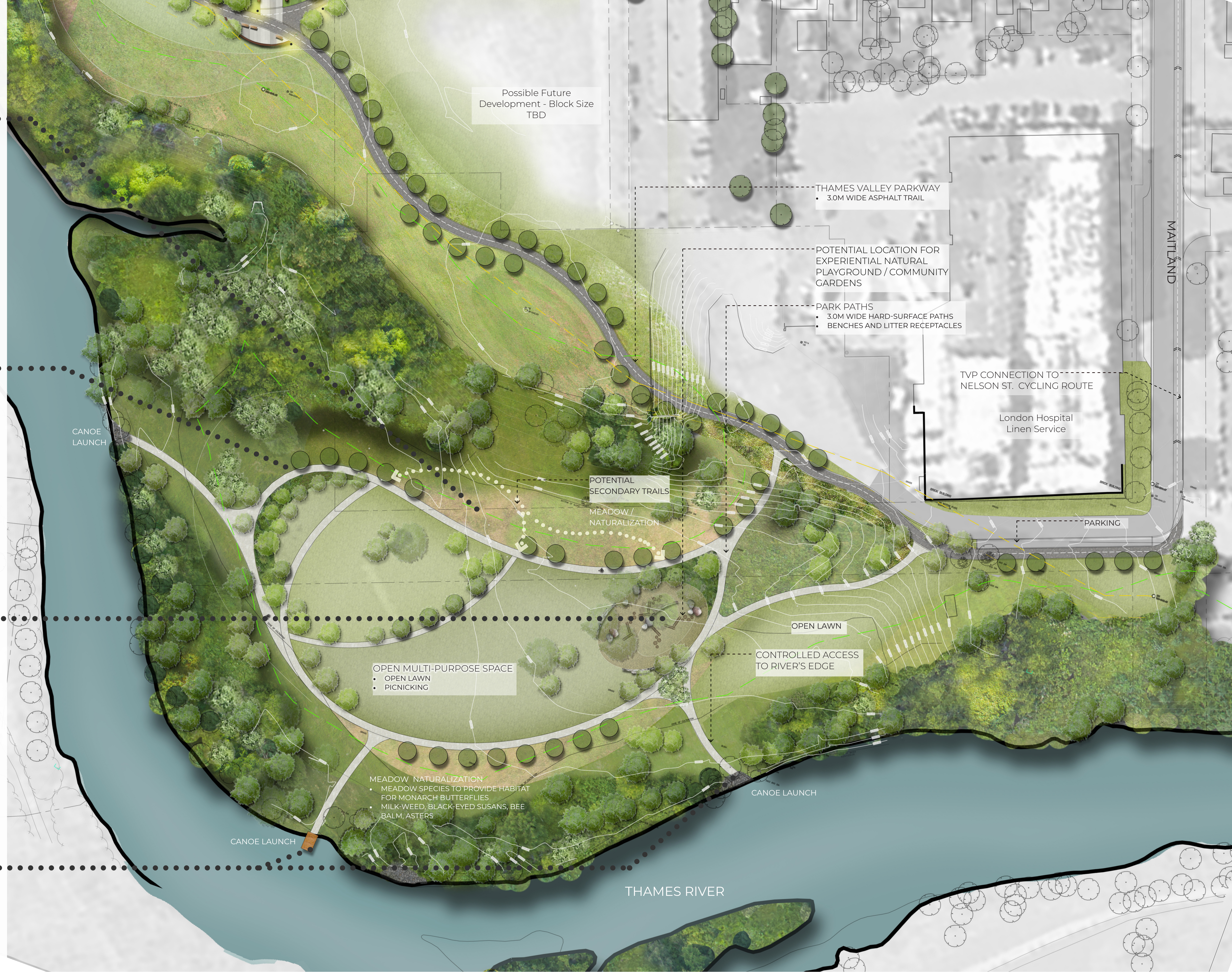


**LEGEND:**

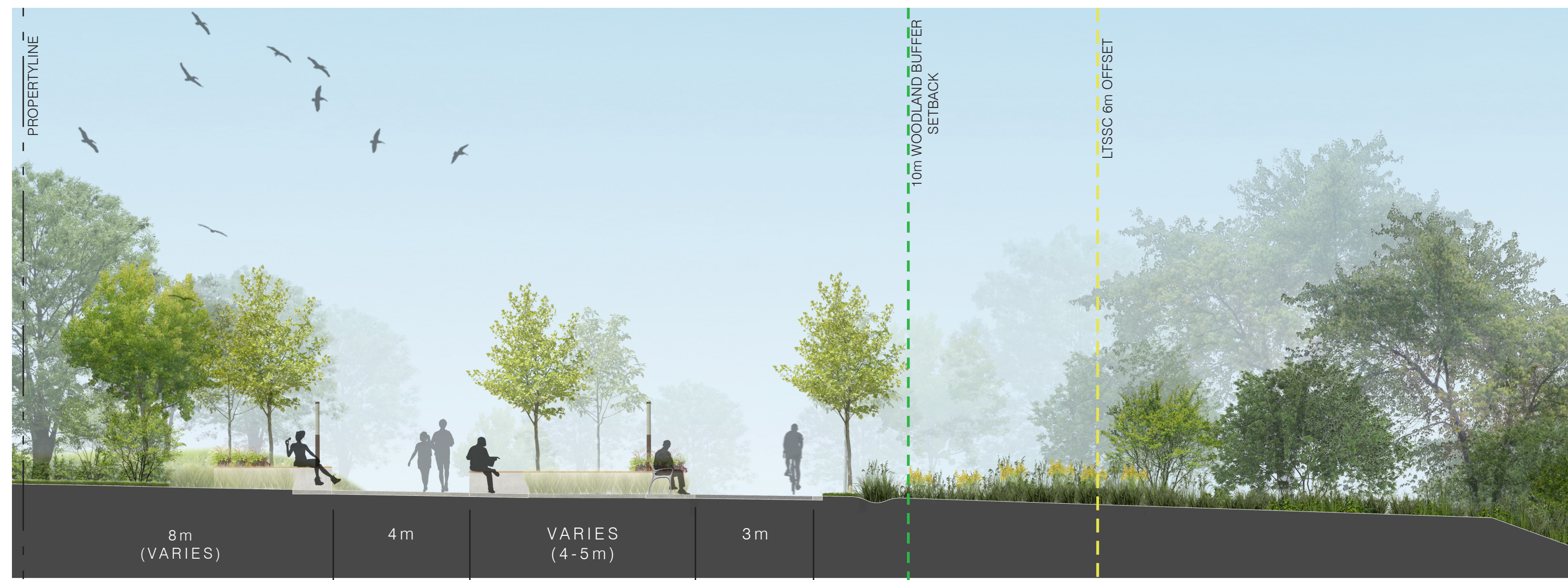
Approximate Site Boundary	Existing Woodland	Existing TVP	Key Urban Park Activity Node
LTSSC Position Plus 6m Erosion Access Allowance	Woodland Enhancement within 3m Tom Buffer (EIS)	Proposed TVP	Secondary Urban Park Node Along TVP
Slope Crest	Existing Park	Potential Pedestrian Linkage / Connection	Potential View / Vista
Regulatory Floodplain Limit	Future Development	Proposed Mid-Block Connection	Four Corners as Identified in QVHL Secondary Plan
Woodland Buffer (EIS)	Proposed Future Civic Space	Existing Vehicular Circulation	
Urban Park Corridor		Proposed Shared Pedestrian / Vehicular Drive	





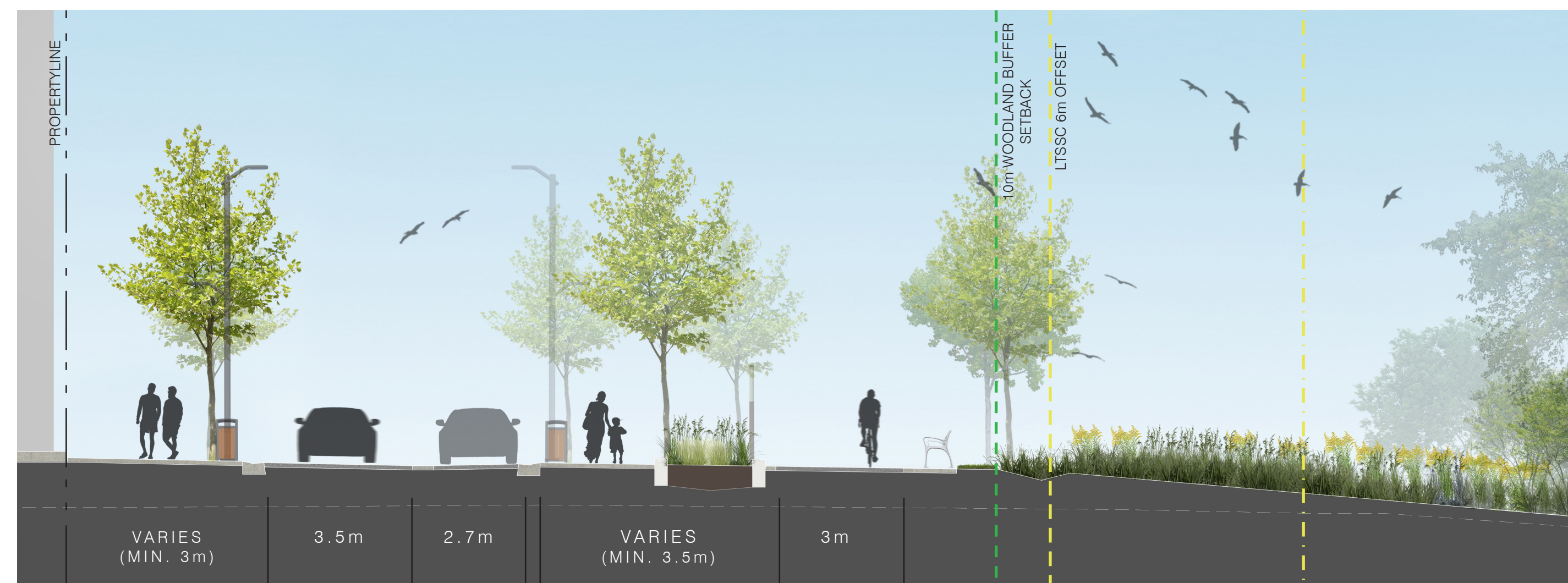






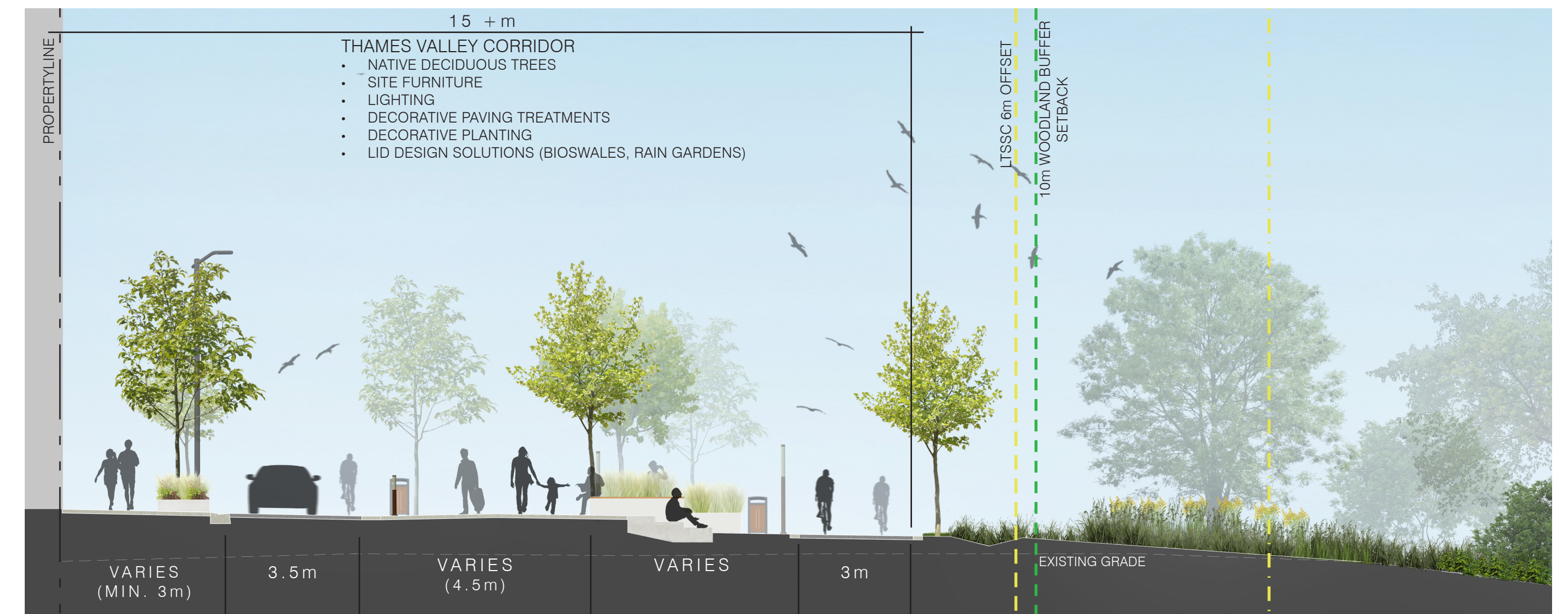
- OPEN SPACE**
  - NATIVE DECIDUOUS TREES
  - DECORATIVE LIGHTING
  - CONNECTION TO PHASE 1 DEVELOPMENT
- URBAN PROMENADE**
- PLAZA AREA / ACTIVITY NODES**
  - NATIVE DECIDUOUS TREES
  - SITE FURNITURE
  - DECORATIVE FEATURE LIGHTING
  - DECORATIVE PAVING TREATMENTS
  - DECORATIVE PLANTING
  - PROGRAMMABLE SPACE
  - OPPORTUNITY FOR INTERPRETIVE SIGNAGE
- MULTI-USE TVP**
- WOODLAND EDGE PLANTING**

### A Urban Promenade Activity Nodes



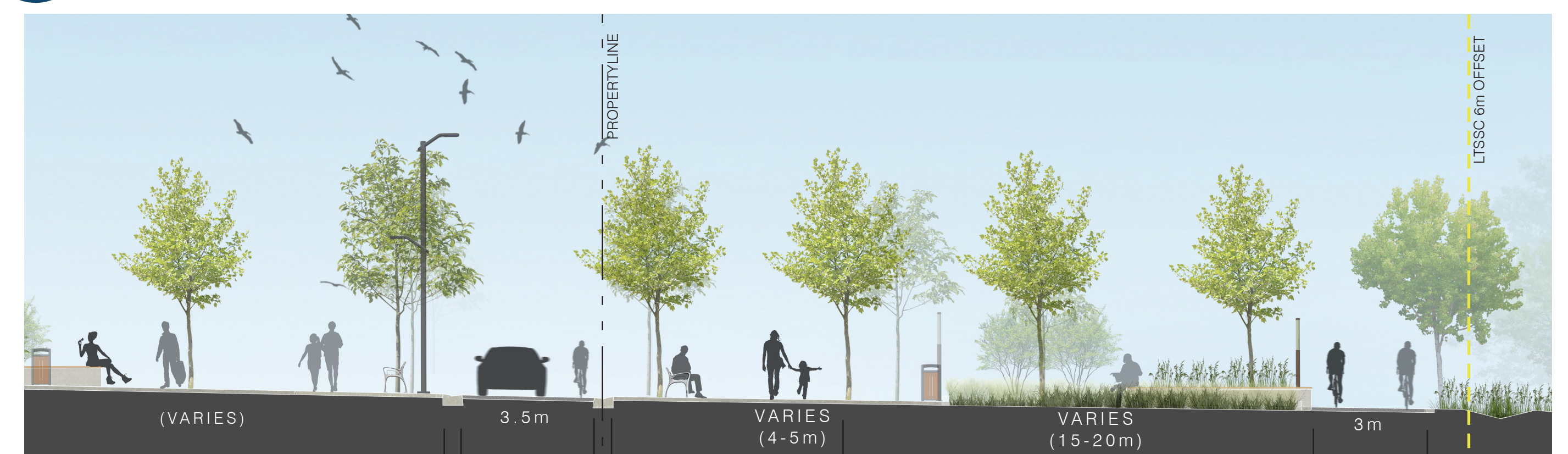
- PEDESTRIAN ZONE**
  - NATIVE DECIDUOUS TREES IN SOIL CELLS
  - SITE FURNITURE
  - LOW PROFILE PLANTERS
  - LIGHTING
- SHARED ZONE**
  - ONE-WAY EAST-BOUND DRIVE LANE
  - PEDESTRIANS
  - CYCLISTS
- PARK LANE**
- PEDESTRIAN ZONE**
  - NATIVE DECIDUOUS TREES IN SOIL CELLS
  - SITE FURNITURE
  - LOW PROFILE PLANTING, RAIN GARDENS
- MULTI-USE TVP**
- WOODLAND EDGE PLANTING**

### C Urban Promenade - Adjacent to TVP



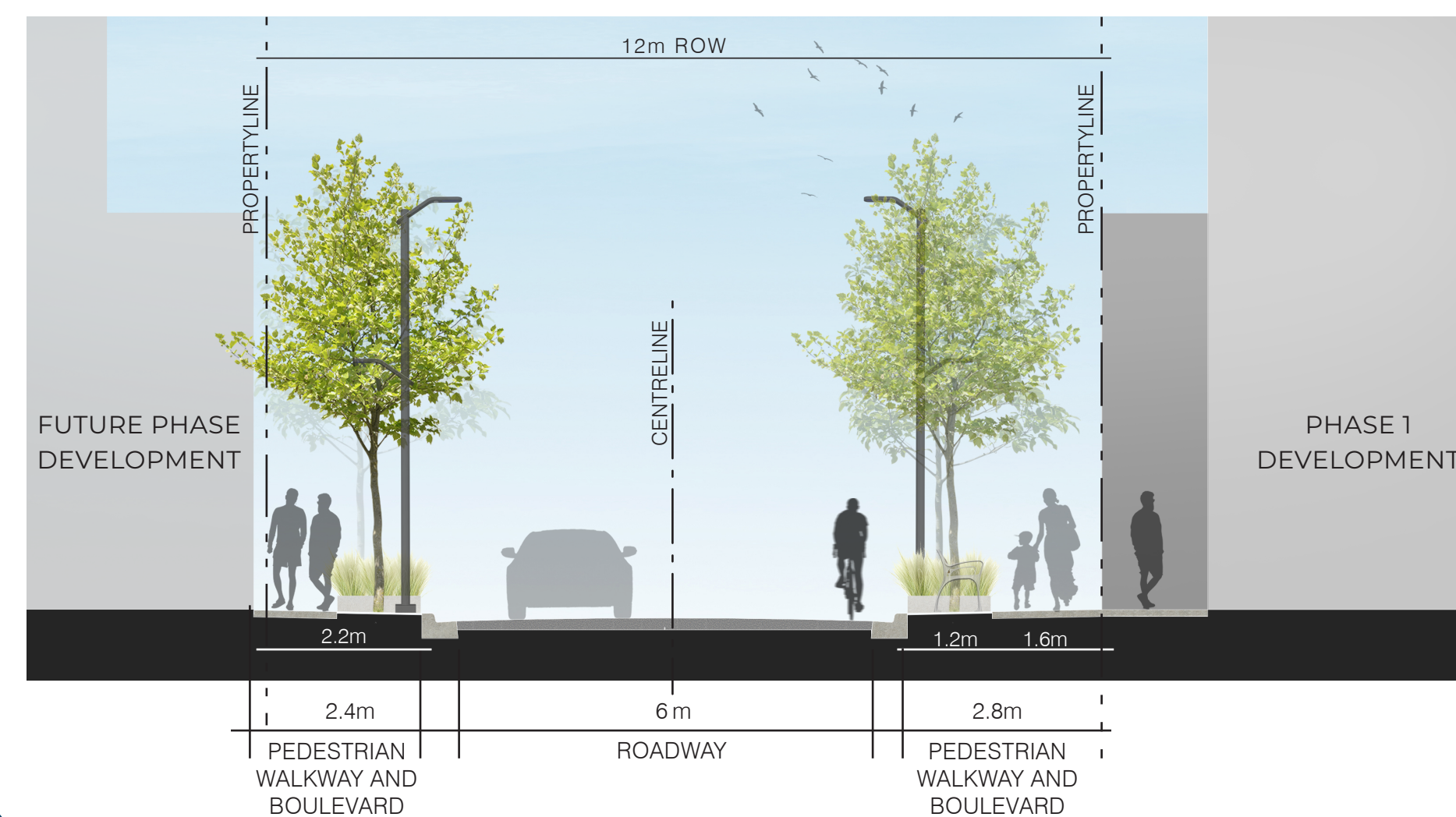
- PEDESTRIAN ZONE**
  - NATIVE DECIDUOUS TREES IN SOIL CELLS
  - SITE FURNITURE
  - LOW PROFILE PLANTERS
  - LIGHTING
- SHARED ZONE**
  - ONE-WAY EAST-BOUND DRIVE LANE
  - PEDESTRIANS
  - CYCLISTS
- PEDESTRIAN ZONE**
  - PEDESTRIAN WALKWAY
  - NATIVE DECIDUOUS TREES IN SOIL CELLS
  - SITE FURNITURE
  - LOW PROFILE PLANTERS
  - LIGHTING
- TERRACED STEPS WITH PLANTERS / DECORATIVE SEATWALLS**
- MULTI-USE TVP**
- WOODLAND EDGE PLANTING**

### B Mid-Block / Shared Driveway Intersection



- PEDESTRIAN ZONE**
  - NATIVE DECIDUOUS TREES IN SOIL CELLS
  - SITE FURNITURE
  - LOW PROFILE PLANTERS
  - LIGHTING
- SHARED ZONE**
  - ONE-WAY EAST-BOUND DRIVE LANE
  - PEDESTRIANS
  - CYCLISTS
- PEDESTRIAN ZONE**
  - PEDESTRIAN WALKWAY
  - NATIVE DECIDUOUS TREES IN SOIL CELLS
  - SITE FURNITURE
  - LOW PROFILE PLANTERS
  - LIGHTING
- URBAN PROMENADE AND PLAZA AREA**
  - NATIVE DECIDUOUS TREES
  - SITE FURNITURE
  - DECORATIVE FEATURE LIGHTING
  - DECORATIVE PAVING TREATMENTS
  - DECORATIVE PLANTING
  - PROGRAMMABLE SPACE
  - OPPORTUNITY FOR INTERPRETIVE SIGNAGE
- MULTI-USE TVP**

### D Central Urban Plaza



### E Mid-Block Connection



BENCHES



MAGLIN BENCH



PARC VIEW, LANDSCAPE FORMS

TRASH RECEPTACLES



SAGE, BY VICTOR STANLEY



MAGLIN

BIKE RACKS



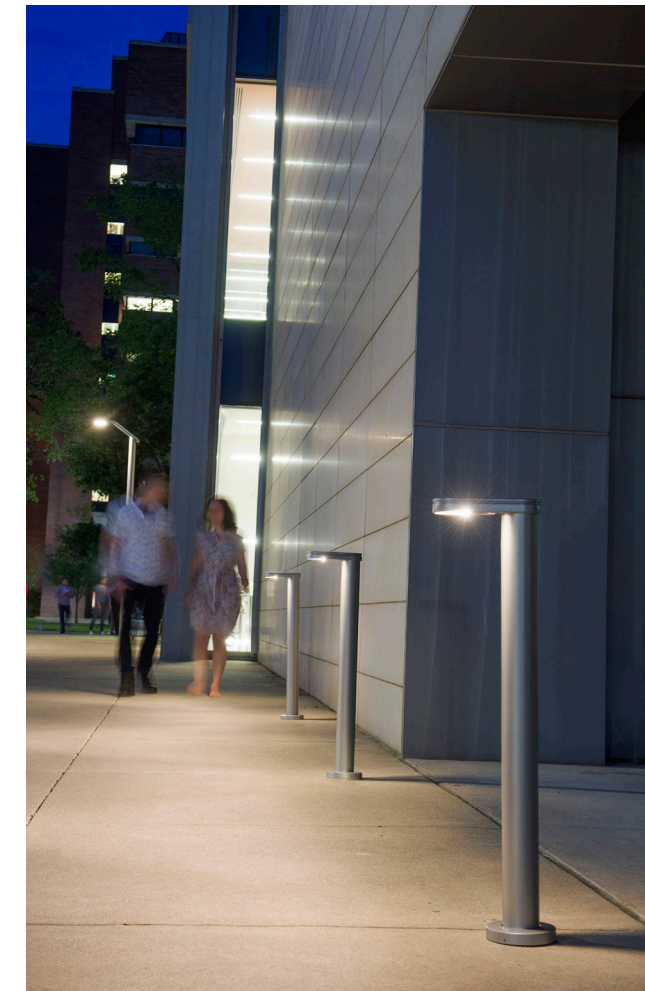
LANDSCAPE FORMS



PATH LIGHTING & BOLLARDS



MULTIPLICITY COLLECTION, LANDSCAPE FORMS

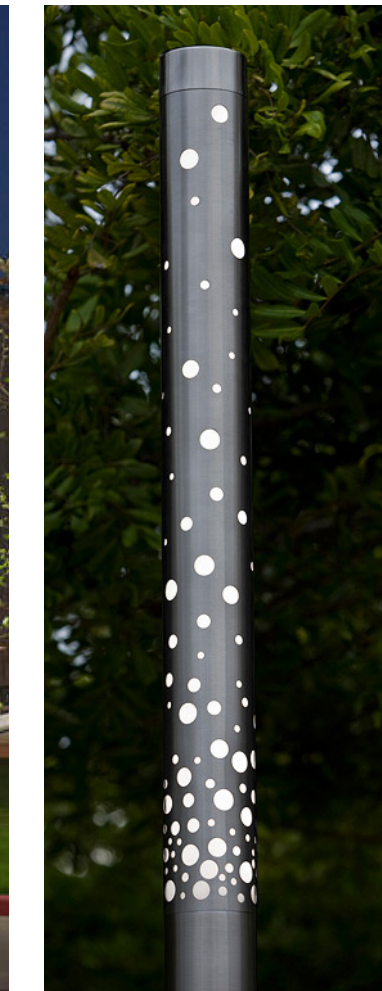


FORMS+SURFACES

URBAN PROMENADE LIGHTING



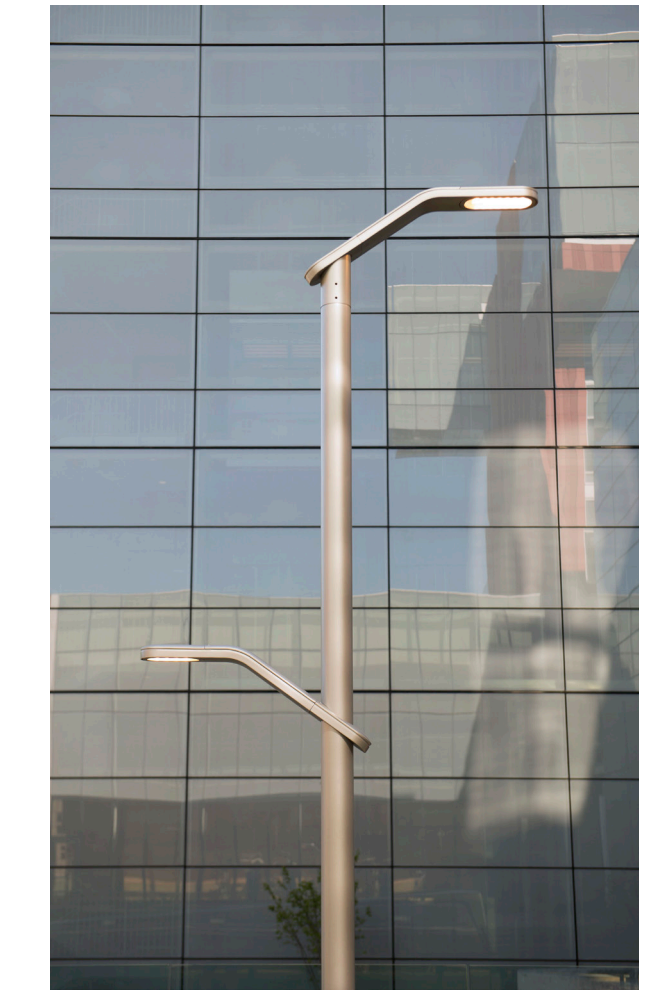
LIGHT COLUMN PEDESTRIAN LIGHTING, FORMS+SURFACES



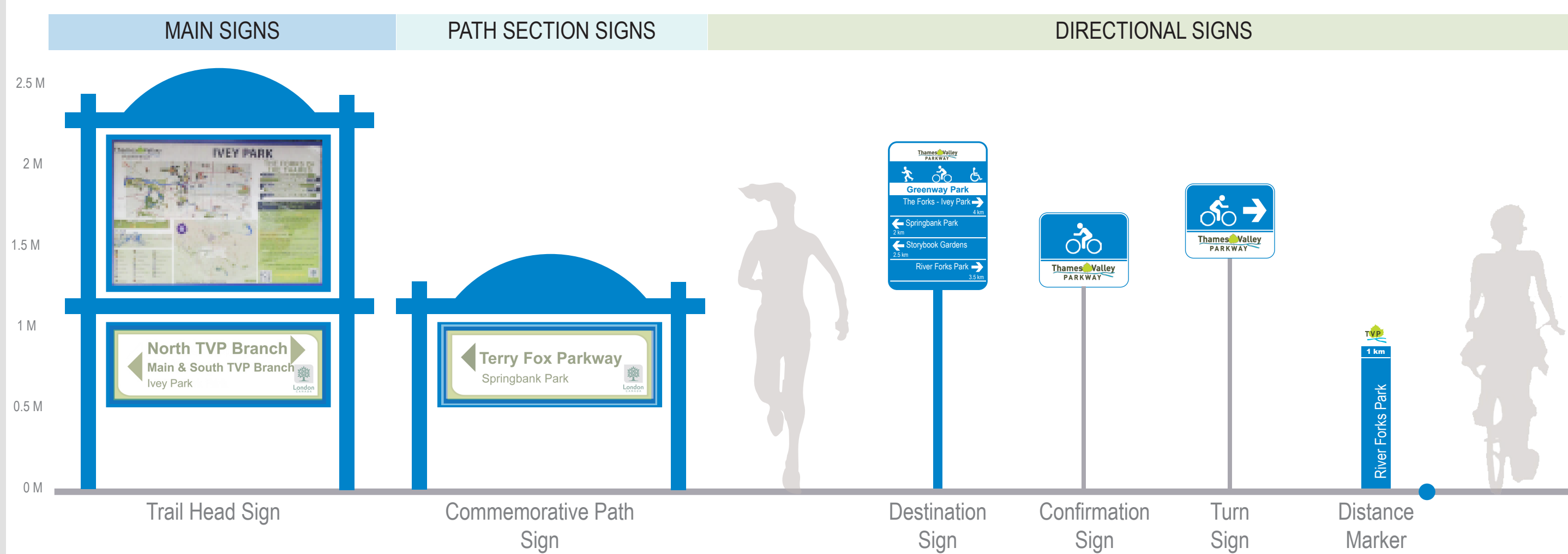
SHARED DRIVEWAY/MUNICIPAL ROAD LIGHTING



TORRES COLLECTION, LANDSCAPE FORMS



THAMES VALLEY PARKWAY SIGNAGE FAMILY



ADDITIONAL PATHWAY MARKERS



# Opportunity Statement

The project objective is to generate a long-term concept plan and short term detailed design (associated with Phase 1 implementation) for the Thames Valley Corridor (TVC) on the north side of the Thames River between Wellington Street and Maitland Street, within the Old Victoria Hospital Lands.

The concept plan and detailed design developed from this study will support the goals and objectives of the SoHo Community Improvement Plan and be consistent with Official Plan policies detailed in the Old Victoria Hospital Lands (OVHL) Secondary Plan, while taking into consideration the 'Ribbon of the Thames' vision and the City's desire to maximize the area and value of future OVHL development lands.

- Key Recommendations Include:
- Create Gathering Spaces along the top of the Thames Valley Corridor within a new Urban Park Setting;
  - Establish Park Amenities for District Park;
  - Provide Opportunities for Views to the Thames River and Other Important Site Features;
  - Improve Pedestrian Circulation and Linkages to Adjacent City Parks and the Thames Valley Parkway;
  - Provide a New Local Shared Pedestrian Driveway along the top of the TVC;
  - Integrate the Ecological Recommendations identified in the Environmental Impact Study.

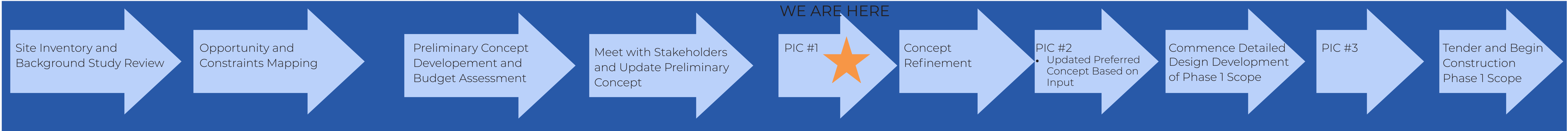
# Purpose of Tonight's Open House

The purpose of tonight's Open House is to generate feedback on the proposed draft concept in order to help refine the design.



Existing Site Context

# Study Process



May to July 2018

August to October 2018

November 2018

Winter 2019

Winter 2019

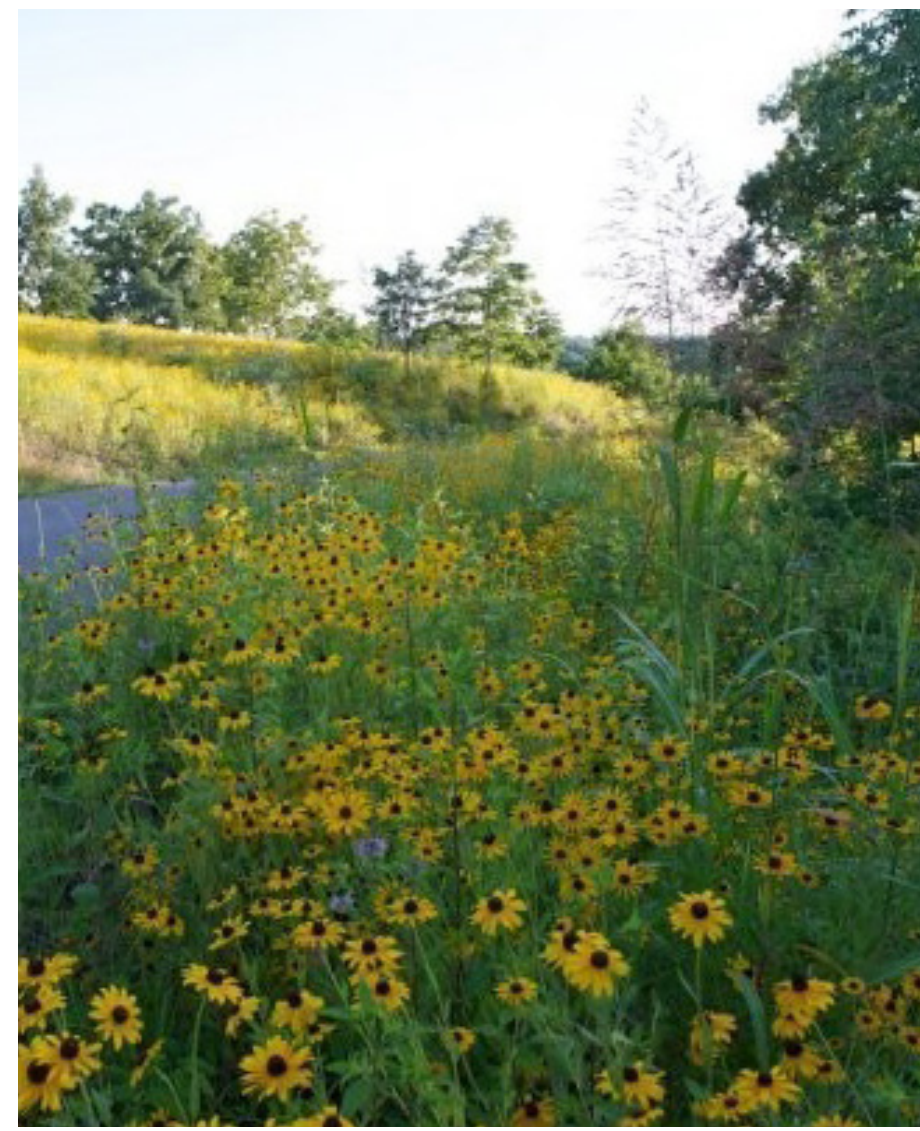
Fall 2020

Tentatively Early Spring 2020 (TBD)



PLANTING PALETTE

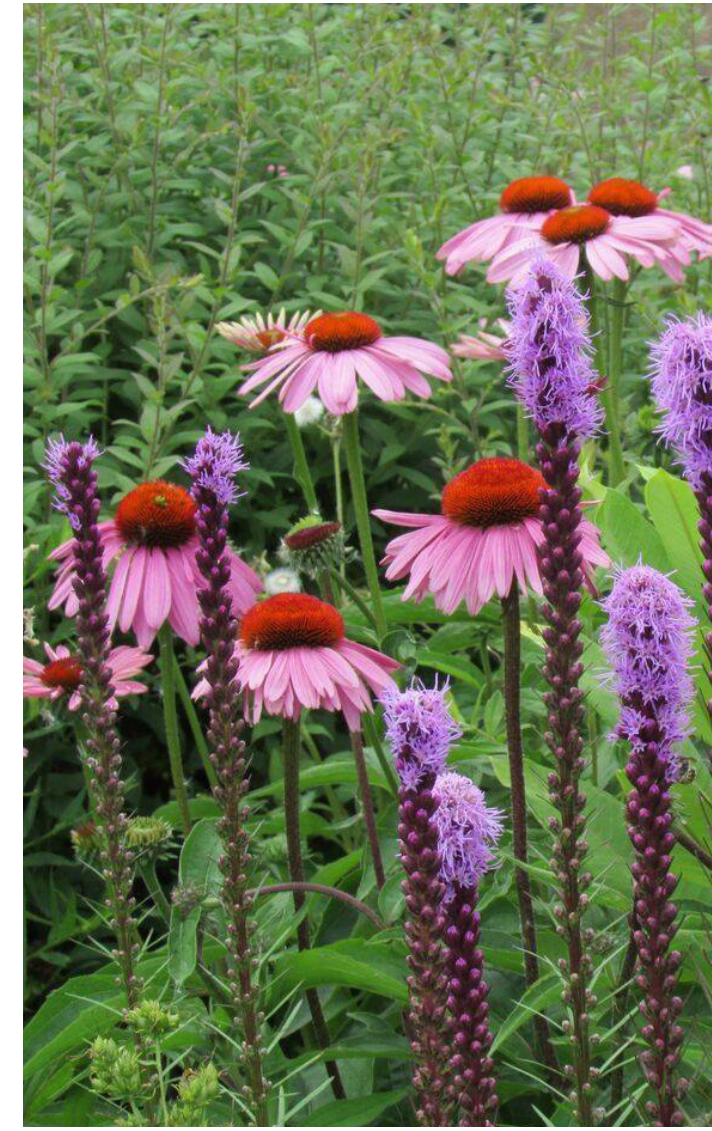
MEADOW AND BIOSWALE PLANTING



NATIVE PERENNIALS AND GRASSES



RAIN GARDEN PLANTING



NATIVE PERENNIALS & POLLINATORS



URBAN PROMENADE AND URBAN PLAZA PLANTING



STREET TREES - COMMON HACKBERRY



SUGAR MAPLE



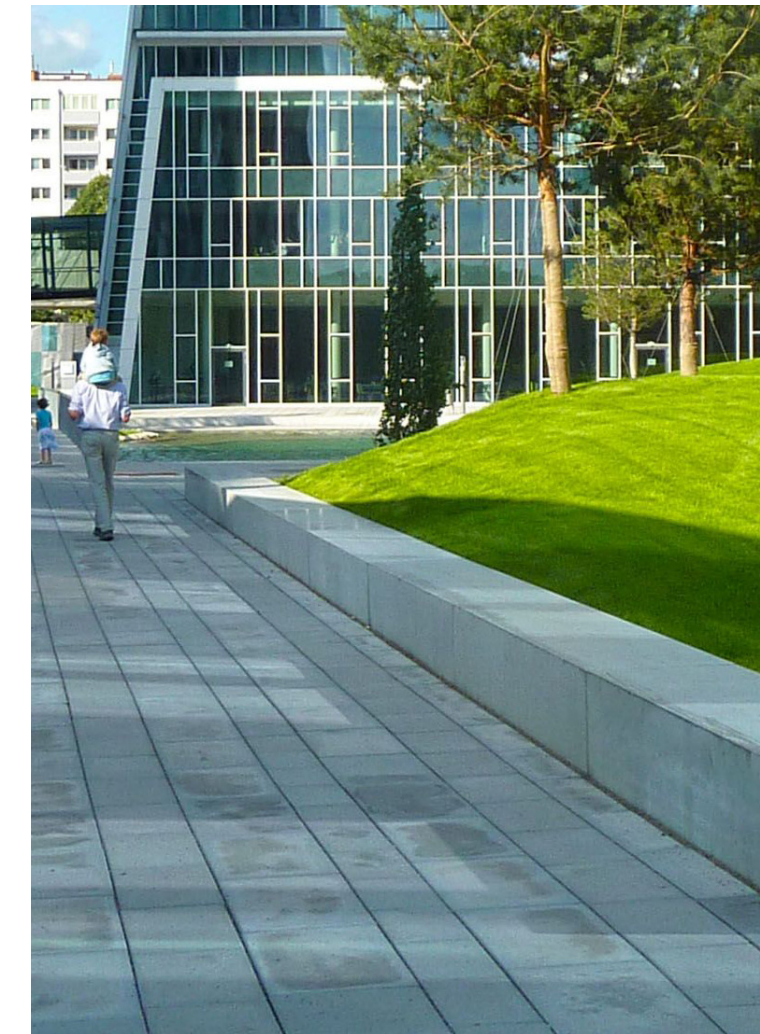
WHITE OAK

SITE FEATURES

DECORATIVE SEATWALLS AND PLANTER WALLS

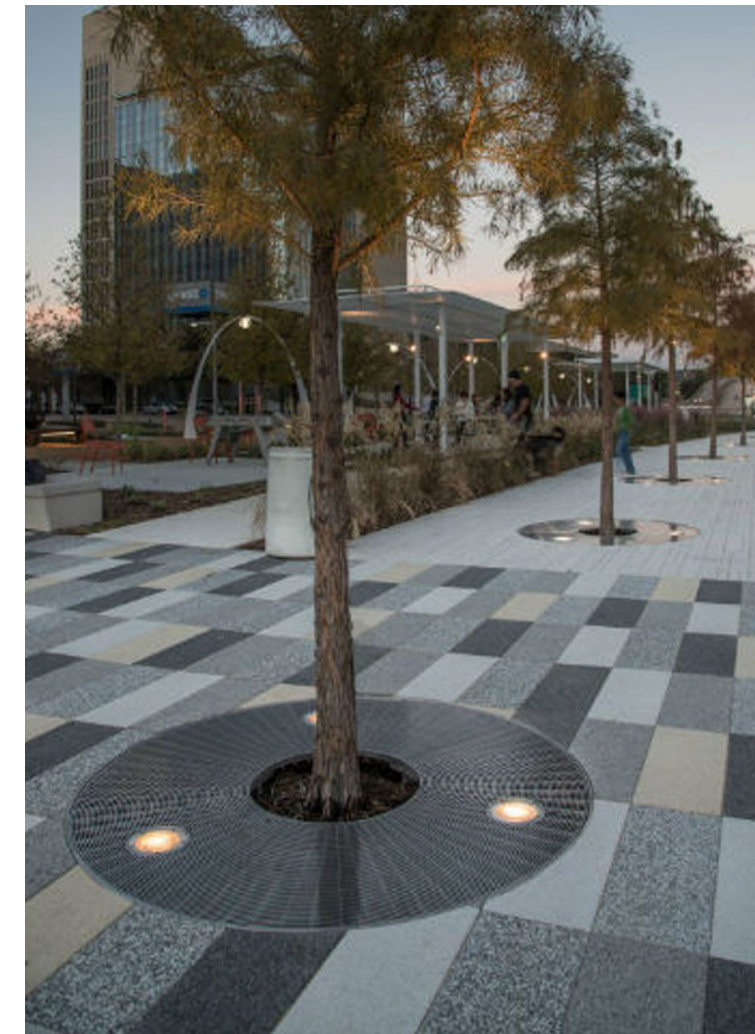


LOW-PROFILE DECORATIVE WALLS



LOW-PROFILE RAIN GARDEN PLANTERS

STREETScape



TREE GRATES



HABITAT CREATION



BAT / BIRD BOXES



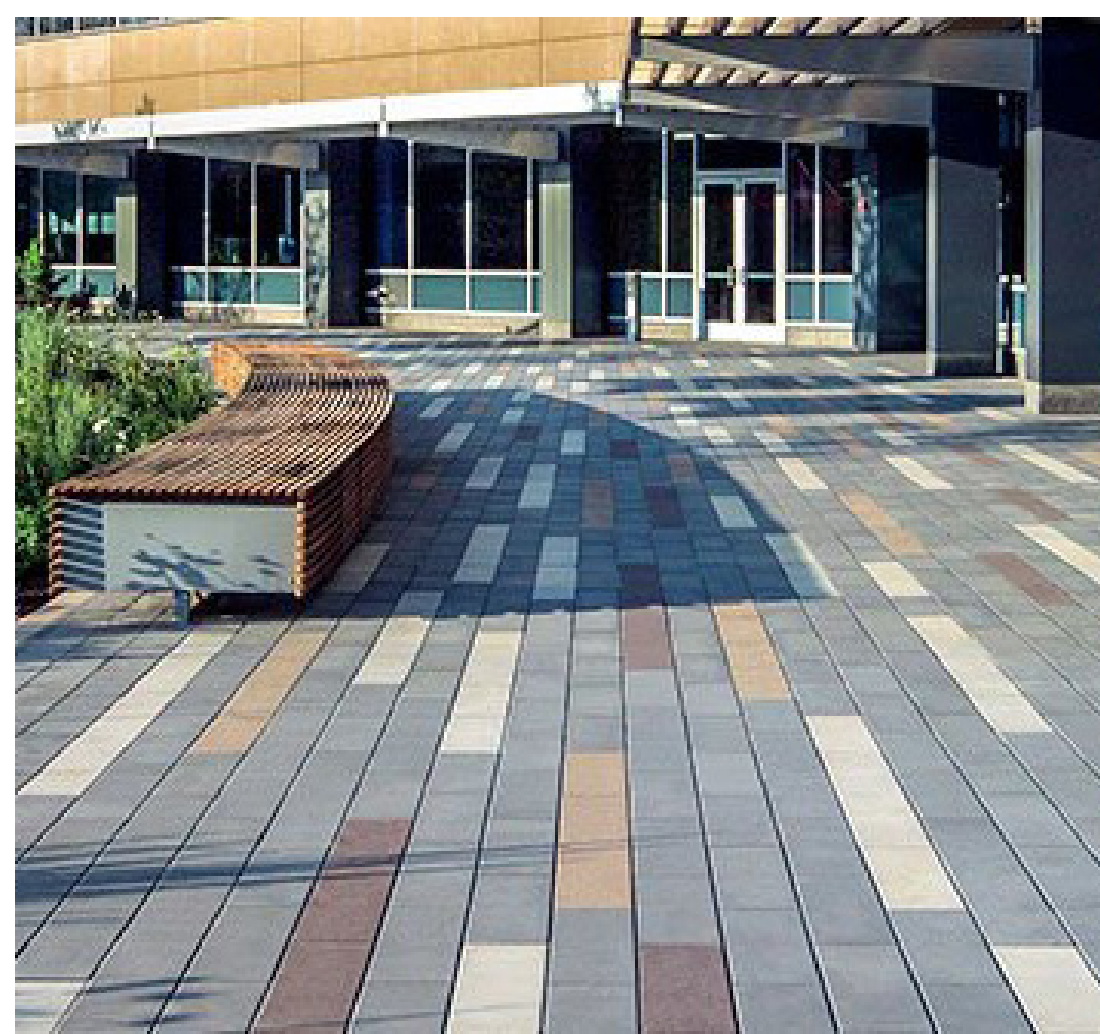
PAVING MATERIALS

THAMES VALLEY PARKWAY



ASPHALT PATH

URBAN PROMENADE AND SHARED DRIVEWAY OPTIONS



UNIT PAVING WITH ACCENT COLOURS/SHADES IN SPECIAL ZONES



DECORATIVE CONCRETE - EXPOSED AGGREGATE FOR ACCENTS AND PATTERNING IN SPECIAL ZONES



# Cycling Advisory Committee

## Report

1st Meeting of the Cycling Advisory Committee  
December 19, 2018  
Committee Room #4

Attendance                   PRESENT:   D. Mitchell (Chair), D. Doroshenko, D. Foster, R. Henderson, J. Jordan, W. Pol, R. Sirois, D. Szoller, M. Zunti; and P. Shack (Secretary)

ALSO PRESENT: S. Harding, P. Kavcic, L. Maitland, A. Miller and S. Wilson

### 1. Call to Order

#### 1.1 Disclosures of Pecuniary Interest

That it BE NOTED that no pecuniary interests were disclosed.

### 2. Scheduled Items

#### 2.1 Wilton Grove Road Reconstruction Commerce Road to Westchester Bourne

That the following action be taken with respect to Wilton Grove Road Reconstruction-Commerce Road to Westchester Bourne:

a left turn lane BE CREATED on Wilton Grove Road to Old Victoria Road, heading south;

it being noted that the attached presentation from H. Houtari, Parsons Canada, with respect to the Wilton Grove Road Reconstruction Commerce Road to Westchester Bourne, was received.

### 3. Consent

#### 3.1 11th Report of the Cycling Advisory Committee

That it BE NOTED that the 11th Report of the Cycling Advisory Committee, from its meeting held on November 20, 2018, was received.

### 4. Sub-Committees and Working Groups

That it BE NOTED that the Cycling Advisory Committee heard a verbal update from A. Miller, with respect to the inventory of public accessible bike parking racks in the downtown area.

### 5. Items for Discussion

#### 5.1 ReThink Zoning Draft Terms of Reference

That it BE NOTED that the Cycling Advisory Committee held a general discussion with respect to the ReThink Zoning Draft Terms of Reference.

**6. Deferred Matters/Additional Business**

6.1 (ADDED) Lifestyle Home Show - A. Miller

That it BE NOTED that the Cycling Advisory Committee (CAC) held a general discussion and heard a verbal presentation from A. Miller, Coordinator, Transportation Demand Management, with respect to the CAC's participation at the Lifestyle Home Show.

6.2 (ADDED) Cycling Wrap Up Survey - D. Szoller

That it BE NOTED that Cycling Advisory Committee 2018 Wrap Up Survey Questions document, as appended to the agenda, was received.

6.3 (ADDED) Transportation Advisory Committee Representative

That it BE NOTED that D. Foster is the representative of the Transportation Advisory Committee on the Cycling Advisory Committee.

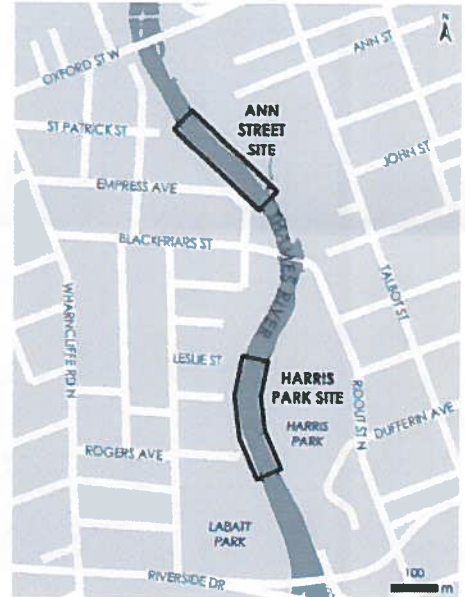
**7. Adjournment**

The meeting adjourned at 6:05 pm.

**West London Dyke Erosion Control  
Municipal Class Environmental Assessment – Notice of Study Completion**

The Upper Thames River Conservation Authority has completed a Municipal Class Environmental Assessment (Class EA) to evaluate solutions for addressing erosion and scour conditions in two areas along the West London Dyke: the Ann Street Site, and the Harris Park Site. The study has been undertaken in accordance with the Municipal Engineers Association Municipal Class EA process for Schedule B projects (2000, as amended in 2007, 2011, and 2015).

**Study Overview:** The Ann Street weir at the Ann Street Site and the rock vanes at the Harris Park Site currently direct the flow of the Thames River in a manner that could compromise the foundation of the West London Dyke. Recommendations at the Ann Street Site include partial removal of the weir and the addition of boulder toe protection along the west bank. Recommendations at the Harris Park Site include modification to the downstream rock vane and the addition of boulder toe protection along the west bank. Shoreline modifications along the east bank should also be considered in conjunction with other Thames River initiatives to protect against future erosion.



**Consultation:** The Notice of Commencement was distributed in December 2017, and a Public Information Centre (PIC) was held in February 2018 to provide information on the study and solicit input from the public, agencies, and Indigenous communities.

**30-Day Public Review:** A Project File documenting the decision-making process, and environmental mitigation measures has been compiled and by this notice will be placed on public record for the statutory 30-day public review period from December 6<sup>th</sup>, 2018 to January 18<sup>th</sup>, 2019. The Project File will be available at the following locations:

UTRCA Watershed Conservation Centre  
1424 Clarke Road,  
London, Ontario N5V 5B9  
Monday-Friday: 8:30am-4:30pm  
Online: <http://thamesriver.on.ca/water-management/london-dyke-system/>

City of London City Hall  
300 Dufferin Avenue  
London, ON N6B 1Z2  
Monday-Friday: 8:30am-4:30pm

Written comments may be provided to the project team by January 18<sup>th</sup>, 2019:

Cameron Gorrie, P.Eng.  
Project Manager, Stantec Consulting Ltd.  
(519) 675-6650  
cameron.gorrie@stantec.com

Stephanie Bergman, MA, ENV SP  
Planner, Stantec Consulting Ltd.  
(519) 675-6614  
stephanie.bergman@stantec.com

**Part II Order Appeal:** In the event concerns regarding this project cannot be resolved through discussions with the project team, a person may request the Minister of the Environment, Conservation and Parks make an order for the project to comply with Part II of the Environmental Assessment Act (known as a Part II Order), which elevates the status of the project to a higher level of assessment by undertaking an Individual Environmental Assessment. Requests must be received by the Minister at the addresses below during the public review period. Part II Order requests must be made in writing using the "Part II Order" request form (form 012-2206E) that can be found here: <http://www.forms.ssb.gov.on.ca/> or by contacting a member of the project team. Completed forms must be sent to the following, with a copy to the project team. If there are no outstanding Part II Order requests by January 18<sup>th</sup>, 2019, the UTRCA may proceed to design and implementation.

Minister, Ministry of the Environment,  
Conservation and Parks  
Ferguson Block, 77 Wellesley St. W. 11<sup>th</sup>  
Floor  
Toronto, ON M7A 1P5  
[Minister.MECP@ontario.ca](mailto:Minister.MECP@ontario.ca)

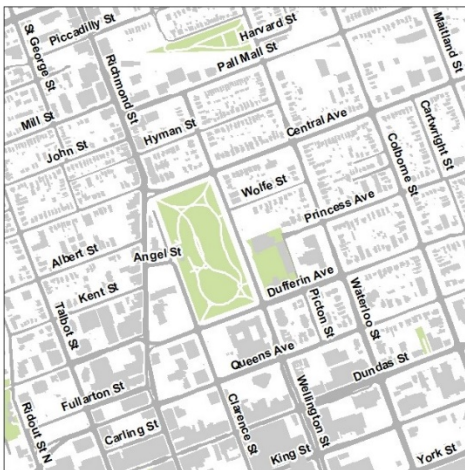
Director, Environmental Assessment and Permissions  
Branch,  
Ministry of the Environment, Conservation and Parks  
135 St. Clair Ave. W, 1<sup>st</sup> Floor  
Toronto, ON M4V 1P5  
[enviopermissions@ontario.ca](mailto:enviopermissions@ontario.ca)

All correspondence received with respect to this study will be kept on file for use during the decision making process, and will become part of the public record. Under the Municipal Freedom of Information and Protection of Privacy Act, and the Environmental Assessment Act, unless otherwise stated in the submission, personal information such as name, address, telephone number, and property location included in a submission may become part of the public record, and will be released, if requested, to any person.

# NOTICE OF PLANNING APPLICATION

## Official Plan Amendment

### Victoria Park Secondary Plan



**File: O-8978**

**Applicant: The Corporation of the City of London**

#### What is Proposed?

Official Plan amendment to allow:

- A Secondary Plan to be added to the 1989 Official Plan and The London Plan to guide any future Zoning By-law Amendment applications for the lands surrounding Victoria Park
- The Secondary Plan will consider such matters as building heights, setbacks, land use, public realm connections, and any other matters that arise through the study process



## LEARN MORE & PROVIDE INPUT

Please provide any comments by **February 7, 2018**

Michelle Knieriem

[mknieriem@london.ca](mailto:mknieriem@london.ca)

519-661-CITY (2489) ext. 4549

City Planning, City of London, 206 Dundas St., London ON N6A 1G7

File: O-8978

[london.ca/planapps](http://london.ca/planapps)

You may also discuss any concerns you have with your Ward Councillor:

Councillor Arielle Kayabaga

[akayabaga@london.ca](mailto:akayabaga@london.ca)

519-661-CITY (2489) ext. 4013

**If you are a landlord, please post a copy of this notice where your tenants can see it.  
We want to make sure they have a chance to take part.**



# Application Details

Commonly Used Planning Terms are available at [london.ca/planapps](http://london.ca/planapps).

## Requested Amendment to the Current Official Plan

To add a Secondary Plan to Chapter 20 of the 1989 Official Plan to apply to the properties surrounding Victoria Park to provide specific policies to guide any future development of these properties. Policies will be developed to address such matters as building heights, setbacks, land use, public realm connections, and any other matters that arise through the learnings of the study process.

## Requested Amendment to The London Plan (New Official Plan)

To add a Secondary Plan to The London Plan to apply to the properties surrounding Victoria Park to provide specific policies to guide any future development of these properties. Policies will be developed to address such matters as building heights, setbacks, land use, public realm connections, and any other matters that arise through the learnings of the study process.

## Planning Policies

These lands are currently designated in the 1989 Official Plan as Downtown Area, Office Area, Multi-Family, Medium Density Residential, Low Density Residential, and Community Facility in the Official Plan, which permit a variety of residential, office, retail, service, recreational, entertainment, institutional and cultural facilities as the main uses.

The subject lands are in the Downtown, Neighbourhood, and Rapid Transit Corridor Place Types in *The London Plan*, permitting a range of residential, retail, service, office, cultural, recreational, hospitality, entertainment, and institutional uses.

## How Can You Participate in the Planning Process?

You have received this Notice because someone has applied to change the Official Plan designation of land located within 120 metres of a property you own, or your landlord has posted the notice of application in your building. The City reviews and makes decisions on such planning applications in accordance with the requirements of the *Planning Act*. The ways you can participate in the City's planning review and decision making process are summarized below. For more detailed information about the public process, go to the [Participating in the Planning Process](http://london.ca/planapps) page at [london.ca](http://london.ca).

## See More Information

You can review additional information and material about this application by:

- visiting City Planning at 206 Dundas Street, Monday to Friday between 8:30am and 4:30pm;
- contacting the City's Planner listed on the first page of this Notice; or
- viewing the application-specific page at [london.ca/planapps](http://london.ca/planapps).

## Reply to this Notice of Application

We are inviting your comments on the requested changes at this time so that we can consider them as we review the application and prepare a report that will include City Planning staff's recommendation to the City's Planning and Environment Committee. Planning considerations usually include such matters as land use, development intensity, and form of development.

## Attend a Community Information Meeting

On Thursday January 24, 2019 City of London Staff will be hosting a community information meeting to present their proposal and obtain input from interested members of the public. Details of the meeting are enclosed with this package. This meeting is being held on a date in advance of the future Public Participation Meeting described below. The Community Information Meeting is not the public meeting required by the *Planning Act* and attendance at this meeting does not create a right to appeal the decision of Council to the Local Planning Appeal Tribunal.

## Attend a Future Public Participation Meeting

The Planning and Environment Committee will consider the requested Official Plan changes on a date that has not yet been scheduled. The City will send you another notice inviting you to attend this meeting, which is required by the *Planning Act*. You will also be invited to provide your comments at this public participation meeting. The Planning and Environment Committee will make a recommendation to Council, which will make its decision at a future Council meeting.

# What Are Your Legal Rights?

## Notification of Council Decision

If you wish to be notified of the decision of the City of London on the proposed official plan amendment, you must make a written request to the City Clerk, 300 Dufferin Ave., P.O. Box 5035, London, ON, N6A 4L9, or at [docservices@london.ca](mailto:docservices@london.ca). You will also be notified if you speak to the Planning and Environment Committee at the public meeting about this application and leave your name and address with the Secretary of the Committee.

## Right to Appeal to the Local Planning Appeal Tribunal

If a person or public body would otherwise have an ability to appeal the decision of the Council of the Corporation of the City of London to the Local Planning Appeal Tribunal but the person or public body does not make oral submissions at a public meeting or make written submissions to the City of London before the proposed official plan amendment is adopted, the person or public body is not entitled to appeal the decision.

If a person or public body does not make oral submissions at a public meeting or make written submissions to the City of London before the proposed official plan amendment is adopted, the person or public body may not be added as a party to the hearing of an appeal before the Local Planning Appeal Tribunal unless, in the opinion of the Tribunal, there are reasonable grounds to add the person or public body as a party.

For more information go to <http://elto.gov.on.ca/tribunals/lpat/about-lpat/>.

## Notice of Collection of Personal Information

Personal information collected and recorded at the Public Participation Meeting, or through written submissions on this subject, is collected under the authority of the *Municipal Act*, 2001, as amended, and the *Planning Act*, 1990 R.S.O. 1990, c.P.13 and will be used by Members of Council and City of London staff in their consideration of this matter. The written submissions, including names and contact information and the associated reports arising from the public participation process, will be made available to the public, including publishing on the City's website. Video recordings of the Public Participation Meeting may also be posted to the City of London's website. Questions about this collection should be referred to Cathy Saunders, City Clerk, 519-661-CITY(2489) ext. 4937.

***Accessibility – Alternative accessible formats or communication supports are available upon request. Please contact [accessibility@london.ca](mailto:accessibility@london.ca) or 519-661-CITY(2489) extension 2425 for more information.***

Wednesday, December 12, 2018

**Concerning: the bicycle lane over Blackfriars Bridge**

**Good day members of the Cycling Advisory Committee:**

1. I hope that your members will look at the physical situation of the reopened Blackfriars Bridge - the bike lane in particular - and make comment to your overseeing standing committee. I figure you will think as I do that the bike lane is not a great design.
2. Also, if your committee commented (to PEC?) on the design plan several years ago I would appreciate a link to that comment. (and hope that won't be a pain to locate)

When the decision was made to refurbish Blackfriars Bridge due both to its historic and design importance, I hoped it would be a pedestrian/bike only crossing, with enhanced park/river amenities each side. The "compromise" decision was made to have it open to vehicle traffic travelling west to east only, with pedestrian and bike traffic also.

After reading in the December 12/18 LFPress that a car had been spotted going the wrong way, I walked over to look at the bridge (something I'd been putting off). <https://lfpres.com/opinion/letters/letters-to-the-editor-dec-12>

I believe that Blackfriars Bridge is not needed for cars. Drivers had two years of closure to figure out other routes. It's now open for vehicles, supposedly only going west to east, and with a height-limiting steel beam. (Think Talbot underpass near Oxford!)

As designed, right now cars coming from either direction can easily cross the bridge. **The (two-way?) bicycle lane is level with the car lane; surely this is unsafe!** There's actually less green space on the east side than before due to a turn-around lane.

I thought I'd prepared myself to view a bad compromise. It was way worse than I expected, however.

I hope you will consider having some of your members look at the situation and comment.

Sincerely and with best personal regards,

**Maureen Temme**

66 Palmer Street, London, N6H 1P7 ph. 519-439-8306 mtemme@execulink.com

-----  
doc title: Blackfriars Bridge letter for Cycling Advisory Committee sent December 12 2018  
in Maureen's folder: London development building planning



300 Dufferin Avenue  
P.O. Box 5035  
London, ON  
N6A 4L9

**London**  
CANADA

January 08, 2019

**To: Homeowner and/or Tenant**

**Re: GREG CURNOE TUNNEL REPAIRS (6-PT-02)  
HORTON STREET TO EVERGREEN AVENUE UNDER CN RAIL  
Tender No.: RFT-18-122**

Dear Resident/Owner:

The City of London will be undertaking repairs and upgrades to the Greg Curnoe Tunnel which connects Horton St/Greenway Park to Evergreen Ave, underneath the CN Rail Line west of Wharncliffe Road. Additional streetlighting upgrades will also be completed between the north end of the tunnel and the intersection of Evergreen Avenue and Riverview Avenue, (see attached map). The work will be broken into two phases. **Phase 1** will occur from January 14<sup>th</sup> to February 22<sup>nd</sup>, 2019 and **Phase 2** will occur from April 15<sup>th</sup> to 26<sup>th</sup>, 2019.

**Phase 1** of the work will be focused within the pedestrian tunnel. The scope of work includes concrete patch repairs and replacement of tunnel light fixtures. During **Phase 1** of construction, the pedestrian tunnel between Horton Street and Evergreen Avenue **WILL BE CLOSED** to the public. The work in the tunnel has been scheduled for the winter season to reduce the impact on the users as compared to a summer closure. During this closure pedestrians will be asked to take the sidewalks from Wharncliffe Road S to Horton Street West as an alternate detour route around the tunnel. For cyclists, traffic control signage will be in place for both westbound and eastbound detour routing. The cyclist detour routes extend between Riverview Avenue, Wharncliffe Road South and Horton Street West.

**Phase 2** will include the installation of new light pole fixtures along the existing and new section of a park pathway, extending from the north tunnel entrance to the west end of Evergreen Avenue. During **Phase 2** the pathway and tunnel will be open to the public, however traffic control will be in place to delineate the work zone adjacent to the multi-use pathway north of the tunnel.

The City of London has awarded this work to Weathertech Restoration Services Inc. (the Contractor), with AECOM Canada Ltd. (the consultant) being retained as the City's Contract Administrator for this project.

The Corporation of the City of London  
Office 519.661- CITY (2489) ext. 5473  
Fax 519.661-4734  
jfullick@london.ca  
www.london.ca

Access to personal driveways and all cross streets will be maintained at all times during construction. If you are experiencing difficulty with the specific traffic control arrangement please do not hesitate to contact our site representative Ryan Hunt (519-566-2331), or one of the two people listed below.

**People and Contacts:** If you have any questions, concerns, or want clarification about this information, the following people are assigned to this specific project. As a reminder, AECOM will be acting as the Construction Administration for this project. Your primary contacts are:

City's Project Manager  
Trevor Hitchon, C.Tech.  
Transportation Planning and Design  
519 661-CITY (2489) Ext. 5925  
[thitchon@london.ca](mailto:thitchon@london.ca)

or

AECOM's Project Engineer  
Gavan McDonald, P. Eng.  
AECOM Canada Ltd.  
519-963-5892  
[gavan.mcdonald@aecom.com](mailto:gavan.mcdonald@aecom.com)

Every effort will be made to minimize the inconvenience to you, your neighbours and the general public. Please contact the consultant's Project Engineer or on-site inspector (Ryan Hunt), The City's Project Manager or the under-signed if you experience construction related problems, and thank you in advance for your patience.

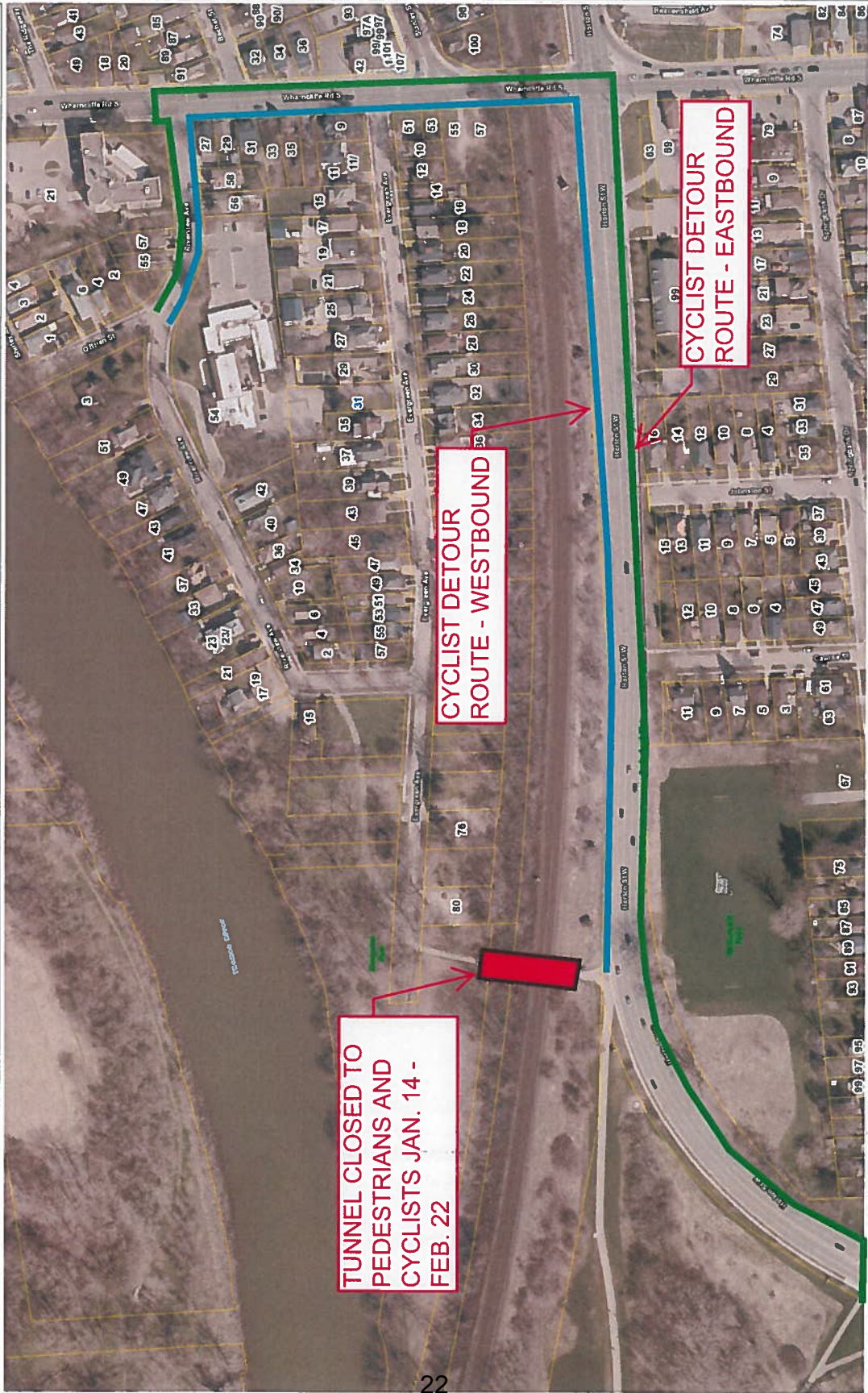
Sincerely,



Jane Fullick, C.E.T.  
Senior Technologist  
Transportation Planning & Design Division

Attachment – location map

c: Councilor Stephen Turner  
Councilor Arielle Kayabaga  
K. Grabowski/T. Hitchon - Transportation Planning & Design  
J. Bruin/L. McNiven - Parks Planning  
P. Shack - CAC  
G. McDonald/R. Hunt, AECOM



TUNNEL CLOSED TO PEDESTRIANS AND CYCLISTS JAN. 14 - FEB. 22

CYCLIST DETOUR ROUTE - WESTBOUND

CYCLIST DETOUR ROUTE - EASTBOUND

