

# Accessibility Advisory Committee

## Report

5th Meeting of the Accessibility Advisory Committee  
May 24, 2018  
Committee Room #4

Attendance                   PRESENT: J. Madden (Chair), M. Cairns, L. Chappell, M. Dawthorne, A. Forrest, N. Judges, P. Moore and J. Bunn (Secretary)

ABSENT: J. Higgins, J. Menard, K. Ramer, K. Schmidt, F. Simmons and P. Quesnel

ALSO PRESENT: D. Baxter, C. Da Silva, M. Dellamora, M. Elmadhoon, K. Husain and M. Morris

The meeting was called to order at 3:01 PM.

### 1. Call to Order

#### 1.1 Disclosures of Pecuniary Interest

That it BE NOTED that no pecuniary interests were disclosed.

### 2. Scheduled Items

#### 2.1 Main Street Infrastructure Improvements (Lambeth)

That the Civic Administration BE ADVISED that the Accessibility Advisory Committee recommends that additional on-street parking on Main Street in Lambeth be installed between South Routledge Road and Bainard Street (Site 2); it being noted that the attached presentation from M. Davenport, Engineer-in-Training, was received with respect to this matter.

#### 2.2 2018 Parking Lot Rehabilitation

That the following actions be taken with respect to the 2018 Parking Lot Rehabilitation program:

a) the Manager, Municipal Law Enforcement Services - Parking and Licensing, or designate, BE REQUESTED to attend a future meeting of the Accessibility Advisory Committee (ACCAC) to discuss accessible pay parking meters; and,

b) the Civic Administration BE ADVISED that the ACCAC recommends that one additional accessible parking spot be installed in Lot 3E at Piccadilly east of Richmond Street, just south of the pay station;

it being noted that the attached presentation from M. Davenport, Engineer-in-Training, was received with respect to this matter.

#### 2.3 Complete Streets Update

That it BE NOTED that the attached presentation from M. Morris, Engineer-in-Training, with respect to a Complete Streets update, was received.

#### 2.4 Parks and Recreation Master Plan Update

That the attached presentation from M. Dellamora, Supervisor, Age Friendly London, with respect to the Parks and Recreation Master Plan Update, BE REFERRED to the Policy Sub-Committee for review and to respond to the four guiding questions contained within the presentation.

### 3. Consent

#### 3.1 3rd and 4th Reports of the Accessibility Advisory Committee

That it BE NOTED that the 3rd and 4th Reports of the Accessibility Advisory Committee, from the meetings held on March 22, 2018 and April 26, 2018, respectively, were received.

#### 3.2 Municipal Council Resolution - 4th Report of the Environmental and Ecological Planning Advisory Committee

That Municipal Council BE REQUESTED to take no action with respect to the proposed "Green Standards for Light Pollution and Bird-Friendly Development" document submitted by the Environmental and Ecological Planning Advisory Committee, pending the completion of a review and report back to the Accessibility Advisory Committee (ACCAC) by Civic Administration with respect to how the proposal relates to accessibility and the ACCAC has been able to provide input on the draft proposal; it being noted that the ACCAC received the draft proposal for review at the May 24, 2018 meeting of the committee.

#### 3.3 Municipal Council Resolution - Mayor's New Year's Honour List Policy By-law

That it BE NOTED that the Municipal Council resolution, from its meeting held on April 24, 2018, with respect to the changing of the Mayor's New Year's Honour List nomination category from "Persons with Disabilities" to "Accessibility", was received.

#### 3.4 Municipal Council Resolution - Conservation Master Plan for Medway Valley Heritage Forest Environmentally Significant Area.

That the Managing Director, Corporate Services and City Solicitor BE REQUESTED to seek a legal opinion, from an expert in Accessibility and Human Rights legislation, with respect to the following matters, as they relate to the Conservation Master Plan for the Medway Valley Heritage Forest Environmentally Significant Area and the related, attached Council resolution:

a) clarification and direction on parts a) iv) and a) vi) and the application of section 80.15 of the Accessibility for Ontarians with Disabilities Act (AODA), Regulation 191/11 Integrated Accessibility Standard, as it applies to the Municipal Council's decision to reject portions of the recommended Master Plan;

it being noted that clause a) iv) calls for further consultations, however clauses a) i), a) ii), a) v) and a) vii) all serve to limit the scope of what the community (including the Accessibility Advisory Committee [ACCAC]) can discuss, comment on, or recommend and this is of particular concern as several members of Municipal Council cited ineffective or insufficient consultation as a major factor in their rejection of the CMP Phase 2 put forth by the Civic Administration;

it being further noted that, with respect to clause a) vi), the direction to limit hardscaped surfaces may be deemed to be in direct conflict with the Municipal Council endorsed Trail Guidelines and the provincial legislation,

more specifically the AODA, Regulation 191/11 Integrated Accessibility Standard, which noted in section 80.9 (1), subsection 3, that “the surface of a recreational trail must be firm and stable”, and section 80.14 (b) further clarifies that “where an exception is permitted to a requirement that applies to a recreational trail..., the exception applies solely to the portion of the recreational trail...for which it is claimed and not to the recreational trail...in its entirety”;

b) to further clarify the much discussed and cited exemption, under section 80.15 of the standard, as the ACCAC believes it does not apply and cannot be used to justify limited accessibility in the Valley;

it being noted that the exemption requires the municipality to demonstrate a significant risk to the environment exists;

it being further noted that the Conservation Master Plan Phase 1, to which the ACCAC had no involvement or undue influence, delineated between areas of high and low sensitivity and risk to the environment and all proposed accessibility enhancements were contained within the Natural Environment Zones, as opposed to the sensitive Nature Reserve Zones; and,

c) to address the application of the Ontario Human Rights Code, as well as the Universal Declaration of Human Rights, as proclaimed by the United Nations, cited in the preamble of the Code, as it relates to the above-noted Municipal Council resolution, most notably the application of sections 1, 2, 13 and 17 of the Code;

it being noted that all discussions at committee level and Municipal Council level addressed only the AODA when discussing accessibility legal requirements.

### 3.5 Notice of Public Meeting - Zoning for Supervised Consumption Facilities and Temporary Overdose Prevention Sites

That it BE NOTED that the Notice of Public Meeting, dated April 25, 2018, from L. Maitland, Planner I, with respect to an amendment to the Zoning By-law related to supervised consumption facilities and temporary overdose prevention sites, was received.

### 3.6 Letter of Resignation

That it BE NOTED that the letter of resignation from the Accessibility Advisory Committee, dated May 10, 2018, from N. Turner, was received.

## 4. Sub-Committees and Working Groups

None.

## 5. Items for Discussion

None.

## 6. Deferred Matters/Additional Business

None.

## 7. Adjournment

The meeting adjourned at 4:58 PM.

# 2.1

 **Main Street Lambeth  
On-Street Parking**



Presented to the Accessibility Advisory Committee  
May 24, 2018

 **Main Street Lambeth**



Main Street – From Colonel Talbot Road to Campbell Street

- No existing on-street parking
- Road reconstruction as part of the 2018 Infrastructure Renewal project

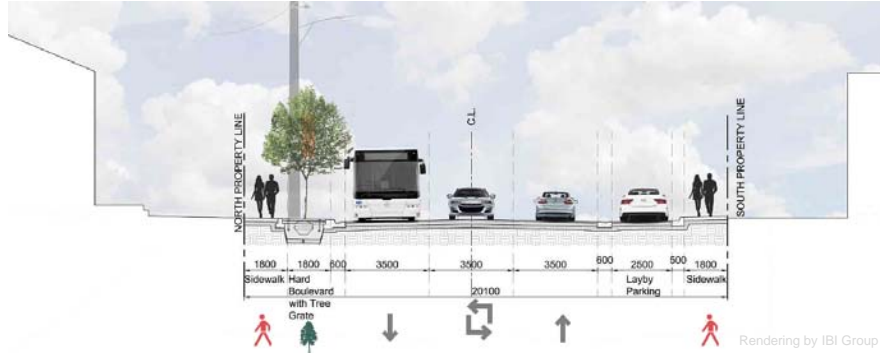
# 2.1



## Main Street Lambeth

### Post-construction road diet (4 to 3 lanes)

- Allows for on-street parking facilities and larger pedestrian spaces



cross-section showing parking on south side



## On-Street Parking

Identified by the:

- London Plan ('Main Street Place Type'), and
- Southwest Area Plan (SWAP)
  
- Requested by the Lambeth community

# 2.1



## On-Street Parking

Based on the road reconstruction 3 parking areas can be added:

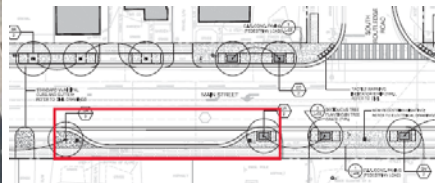
1. West of South Routledge
2. Between South Routledge and Bainard
3. Between Bainard and Campbell



## Area 01 West of South Routledge



Aerial View



Landscaping Plans

# 2.1



## Area 01 West of South Routledge



Street View

**Amenities:**

- Post Office
- LCBO
- Dry Cleaning
- Animal Hospital
- Tea Room

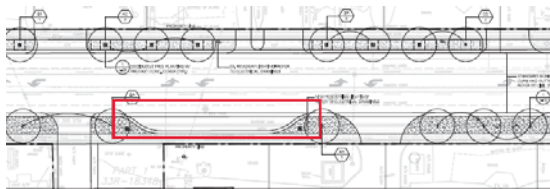


## Area 02 Between South Routledge and Bainard

Aerial View



Landscaping Plans



# 2.1



## Area 02 Between South Routledge and Bainard



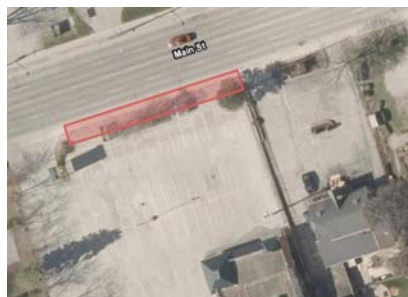
Street View

**Amenities:**

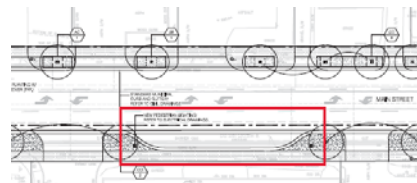
- Market Place
- Art Gallery
- Insurance Provider
- Restaurant
- Post Office
- LCBO
- Dry Cleaning
- Flower Shop



## Area 03 Between Bainard and Campbell



Aerial View



Landscaping Plans



# 2.1



## Area 03 Between Bainard and Campbell



Street View

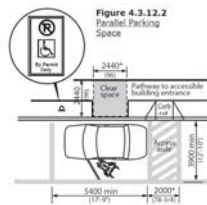
**Amenities:**

- Financial Planning
- Beer Store
- Bakery/Café
- Health Services
- Hair Salon
- Dental Office
- Veterinarian
- Real Estate Agent



## Accessibility

- Parking areas are approx. 18m in length
- Proposed on-street parallel parking:
  - 2 areas with 3 parking spaces
  - 1 area with:
    - 1 typical on-street parking space; and
    - 1 accessible parking space with access aisle



Facility Accessibility Design Standards

# 2.1



## Next Steps

- Determine the preferred location for the accessible parking space
- By-law amendment for parking on Main Street






## 2018 Municipal Parking Lot Upgrades (Lots 3W, 3E & 4)




Presented to the Accessibility Advisory Committee  
May 24, 2018




## Background

- Annual parking lot upgrade program
- Program identifies rehabilitation of 11 proposed municipal parking lots over 4 years
- In 2018 transportation is working on parking lots 3W, 3E & 4
- Limited amount of work in each parking lot




## Scope of Work

**2018 Parking Lots:**

- 3W Piccadilly West of Richmond
- 3E Piccadilly East of Richmond
- 4 Marshall Street



## Scope of Work

- Resurfacing parking lot asphalt (50mm)
- Replacing damaged curbs
- Replacing sidewalks/walkways
- Installing new signage
- Painting parking space lines to meet current standards



## Applicable Standards

### Accessible Parking Spaces:

- Accessibility for Ontarians with Disabilities Act (AODA)
- Ontario Traffic Manual (OTM)
- Facility Accessibility Design Standards (FADS)
- Site Plan Control By-law



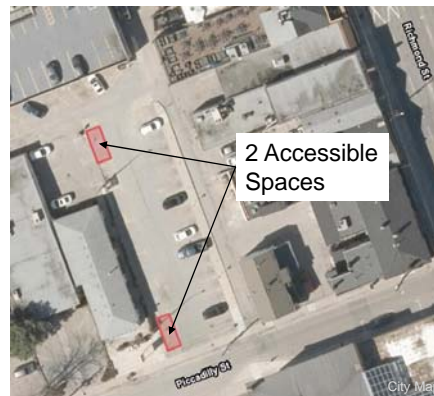
## Lot 3W Piccadilly West of Richmond

### Existing:

- 18 standard parking spaces
- 6 parallel parking spaces

### Accessibility

- 2 parallel spaces are accessible
- Only 1 access aisle





## Lot 3W Piccadilly West of Richmond

### After Construction:

- Approx. 16 standard parking spaces
- Approx. 6 parallel parking spaces

### Accessibility

- 2 spaces to be accessible (per AODA):
  - 1 Type A parking space with aisle
  - 1 Type B parking space with aisle



## Lot 3E Piccadilly East of Richmond

### Existing:

- 35 parking spaces

### Accessibility

- 2 accessible parking spaces
- No access aisles
- Walkway and parking pay station have physical barriers to access





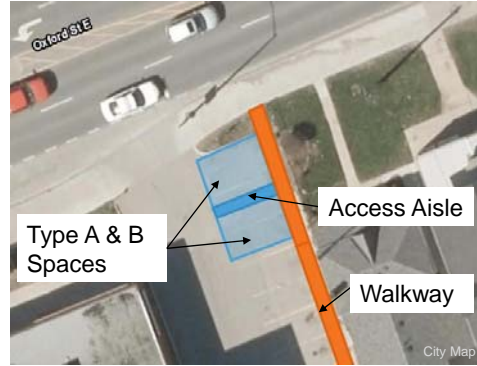
## Lot 3E Piccadilly East of Richmond

### After Construction:

- Approximately 34 parking spaces

### Accessibility

- 2 spaces to be accessible (per AODA)
- New walkway with 1.8m width



## Lot 4 Marshall Street

### Existing:

- 113 parking spaces

### Accessibility:

- 4 accessible parking spaces
- No access aisles





## Lot 4 Marshall Street

### After Construction:

- Approx. 112 parking spaces

### Accessibility

- 5 spaces to be accessible (per AODA):
  - 3 Type A spaces with aisles
  - 2 Type B spaces with aisles







# Review of the Forthcoming City of London Complete Streets Design Manual

Presentation to the Accessibility Advisory  
Committee  
May 24, 2018

[london.ca](http://london.ca)



## Introduction - What are Complete Streets?

“ A complete street is one that is designed to accommodate the mobility needs of **all ages, abilities, and modes of travel**. Safe and comfortable access for **pedestrians, bicycles, transit users, and the mobility challenged** are not design after-thoughts, but are **integral to the planning of the street from the start**. ”

- London Transportation Master Plan

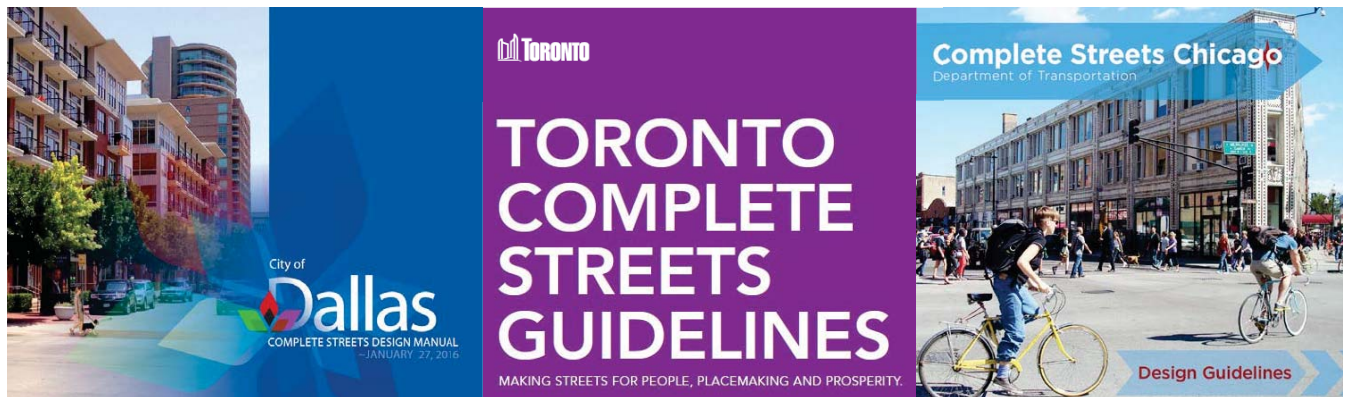


[london.ca](http://london.ca)



## Introduction – Complete Streets Manuals

Complete Streets Guides & Manuals have been developed by **many cities around the world** to help **direct and coordinate** street planning/design towards more balanced mobility options



london.ca

3



## Background

The 2016 City of London Official Plan introduced a group of **Street Classifications**, which set the stage for more **context sensitive city building policies** and **redefining mobility** for Londoners

Classifications Include:

- Rapid Transit Boulevards
- Urban Thoroughfares
- Civic Boulevards
- Main Streets
- Neighbourhood Connectors
- Neighbourhood Streets
- Rural Thoroughfares
- Rural Connectors



**THE  
LONDON  
PLAN**

EXCITING. EXCEPTIONAL. CONNECTED.

london.ca

4



## Background

Each **Street Classifications** was accompanied with policies to guide future planning and design towards a an **intended character and function**, while progressing towards **overall mobility goals**

DESIGN FEATURES	STREET CLASSIFICATION		
	Rapid Transit Boulevard	Urban Thoroughfare	CMC Boulevard
Planned Street Width (Width of Right-of-Way)	50m	45m	36m
<b>VEHICLE ZONE</b>			
Divided and/or Separated	*		
On-street Parking (Additional to Through Lanes)	*	*	*
On-street Parking (In Through Lanes)	*	*	*
Cycle Facility	*	*	*
Left Turn Lanes	*	*	*
Right Turn Lanes		*	*
Planted Medians	*	*	*
Curb Extensions			
<b>PEDESTRIAN ZONE</b>			
Hard Surface (From Curb to Building Face)	*		
Standard Sidewalk (1.5m wide, Both Sides)	*	*	*
Coordinated Utilities	*	*	*
Street Trees	*	*	*
Street Furniture	*		
Pedestrian-scaled Lighting	*		
Landscape Planters	*	*	*
Grass Boulevard	*	*	*
Enhanced Cross-walk Treatments	*		
Low Impact Development	*	*	*



## Background

**Many stakeholders were included in consultation efforts** for the development of the Complete Streets Design Manual and attended a **Stakeholder Workshop**, held on June 2nd, 2017. These groups included:

- Accessibility Advisory Committee
- Can-Bike
- Hyde Park Business Association
- Bell
- London Middlesex Road Safety Committee
- Middlesex Health Unit
- Start Communications
- Cycling Advisory Committee
- London Fire
- London Development Institute (LDI)
- Downtown London BIA
- London Hydro
- London Transit
- Union Gas
- Tree and Forests Advisory Committee
- Argyle BIA
- City of London Water
- London Environmental Network
- City of London Development Services



## Goals

The City of London Official Plan suggested the preparation of a Complete Streets Manual to establish:

- Overall cross-sections for the street classifications
- Design parameters for the public realm



[london.ca](http://london.ca)

7



[london.ca](http://london.ca)

8



## London Complete Street Manual - Content

### Chapter 1: Complete Streets: Vision and Principles

- Complete Streets concepts and policy support

### Chapter 2: Elements of Complete Streets

- Complete Streets features

### Chapter 3: Undertaking Complete Streets Design

- Processes for balancing the needs of current and future users

### Chapter 4: Street Design for Roadways

- Street characteristics/priorities and conceptual cross sections, by street classification

### Chapter 5: Street Design for Intersections

- Intersection treatments that provide Complete Streets elements for specific combinations of street classifications

### Chapter 6: Moving Forward with Complete Streets

- Progress indicators for Complete Streets outcomes



### Contents:

1. What are Complete Streets?
2. Who is This Guide For?
3. Review of Complete Streets Policies in London
4. Core Principles for Complete Streets

## CHAPTER

# 1

## COMPLETE STREETS: VISION AND PRINCIPLES



## Local Policy Support

“At the local level, policy support for complete streets is found in a number of documents, including the:

- Strategic Plan
- The London Plan
- Downtown Plan
- Design Specifications and Requirements Manual
- Cycling Master Plan
- London Rapid Transit
- London Road Safety Strategy
- London 2030 Transportation Master Plan”



# THE LONDON PLAN

EXCITING. EXCEPTIONAL. CONNECTED.



london.ca



11



## Local Policy Support

“Municipal Council adopted the following Vision Zero Principles:

- No loss of life is acceptable
- Traffic fatalities and serious injuries are preventable
- We all make mistakes
- We are all physically vulnerable when involved in motor vehicle collisions
- Eliminating fatalities and serious injuries is a shared responsibility between road users and those who design and maintain our roadways”



london.ca

12



## Core Principles



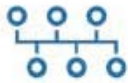
**Prioritize Safe and Accessible Options for People**



**Embed Sustainability**



**Emphasize Vitality**



**Prioritize Connectivity**



**Ensure Context Sensitivity**

[london.ca](http://london.ca)

**COMPLETE  
STREETS: VISION  
AND PRINCIPLES**

13



## Core Principles

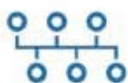


**Prioritize Safe and Accessible Options for People**

“The safety and mobility needs of all users is a priority in any street design exercise.”



**Emphasize Vitality**



“Streets that attract pedestrians enhance urban vitality in London.”



[london.ca](http://london.ca)

**COMPLETE  
STREETS: VISION  
AND PRINCIPLES**

14



## Accessibility

The Manual defines what a pedestrian is, describes the central role of walking and mobility device travel within London and outlines how the City will support pedestrians through Complete Streets.

### Key considerations:

- Tactile walking surface indicators
- Separation of pedestrians and cyclists where practical
- Consideration of user needs and land uses in prioritizing street elements such as sidewalk width
- Design processes that emphasize consultation with stakeholder groups
- Pedestrian crossing refuge islands
- Accessible transit stop design

**COMPLETE  
STREETS: VISION  
AND PRINCIPLES**

[london.ca](http://london.ca)

15



### Contents:

General Considerations and Tools for:

1. Pedestrian Facility Design
2. Cycling Facility Design
3. Transit Facility Design
4. Motor Vehicles
5. Green Infrastructure
6. Utilities and Municipal Services

**CHAPTER**

**2**

**ELEMENTS OF  
COMPLETE  
STREETS**

[london.ca](http://london.ca)

16





## Pedestrian Facility Considerations



An AODA compliant push button

[london.ca](http://london.ca)



Buffered bicycle lane in London.

## Cycling Facilities Considerations

**ELEMENTS OF COMPLETE STREETS**



“**Provide connectivity:** As the slowest mode of transportation, pedestrians have the greatest sensitivity to route directness.”



An AODA compliant push button

[london.ca](http://london.ca)



Buffered bicycle lane in London.

“**Prioritize vulnerable users:** Cyclists are more vulnerable than transit riders and motorists in a collision because they are not protected within a vehicle.”

**ELEMENTS OF COMPLETE STREETS**



## Design For Accessibility

“Pedestrians include those who are using a walker, crutches, a wheelchair or an electrically powered mobility device as well as individuals with a visual impairment.

Design features should be used to accommodate all of London’s pedestrians, such as:

- appropriately wide pedestrian clearways;
- audible pedestrian signals;
- tactile walking surface indicators (TWSIs);
- visually contrasting surface treatments; and
- amenities such as seating



ELEMENTS OF  
COMPLETE  
STREETS



## Contents: (under development with City input)

1. Process Overview
2. Planning
3. Conceptualizing
4. Designing
5. Implementing

CHAPTER

3

UNDERTAKING  
COMPLETE  
STREETS  
DESIGN



## Contents:

1. Street Typologies
2. Design Guidance for:
  - Rapid Transit Boulevards
  - Urban Thoroughfares
  - Civic Boulevards
  - Main Streets
  - Neighbourhood Connectors
  - Neighbourhood Streets
  - Rural Thoroughfares
  - Rural Connectors

## CHAPTER

# 4

## STREET DESIGN FOR ROADWAYS



### Example Civic Boulevard





“ Physically separated and continuous cycling facilities are preferred. ”

Example  
**Civic Boulevard**

“ Civic Boulevards provide multi-modal connections between different neighbourhoods across the City including downtown. ”



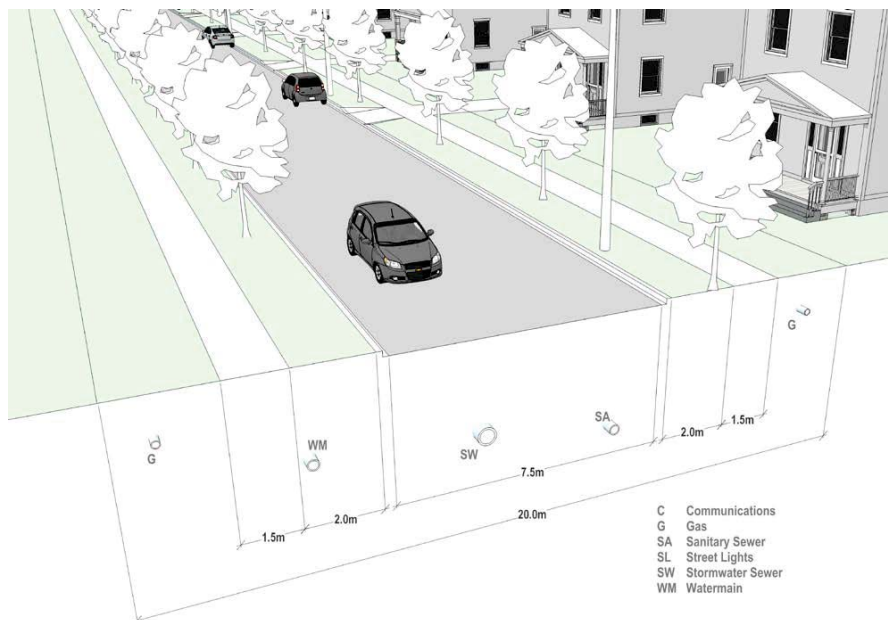
“ The variety of destinations along these corridors can generate significant volumes of walking trips ”

[london.ca](http://london.ca)

**STREET DESIGN FOR ROADWAYS**



Example  
**Neighbourhood Street**



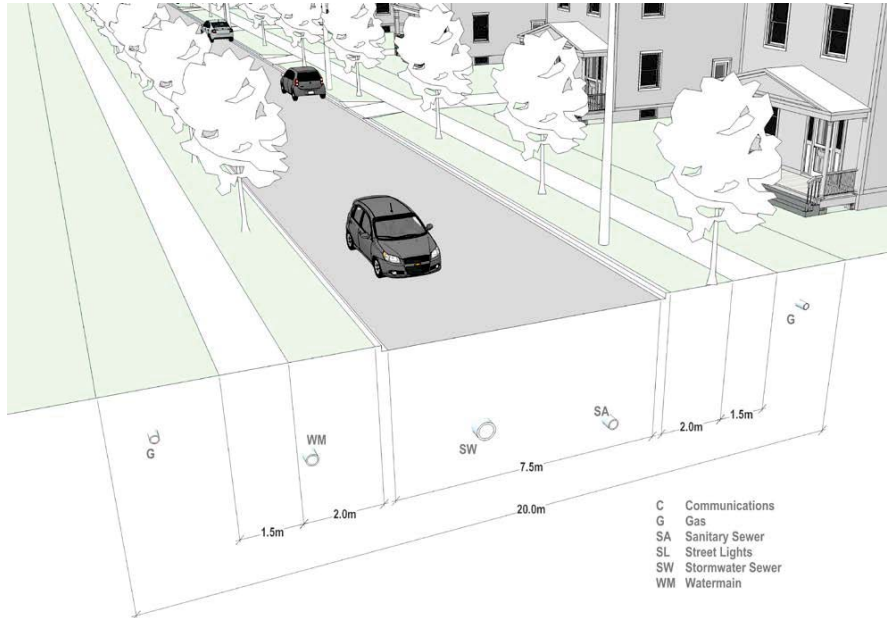
**STREET DESIGN FOR ROADWAYS**

[london.ca](http://london.ca)



Example  
**Neighbourhood Street**

“Neighbourhood Streets are where most Londoners, including many families, live; enhancing the livability, sense of community, and the ability to age-in-place are important considerations.”  
london.ca



“Benches and newspaper boxes are typically provided at corners with other major streets.”

**STREET DESIGN FOR ROADWAYS**



**Contents:**

1. Intersection Design Principles
2. Design Guidance for:
  - Rapid Transit Boulevard Intersecting a Main Street
  - Urban Thoroughfare intersecting a Civic Boulevard (Signalized)
  - Urban Thoroughfare Intersecting a Civic Boulevard (Roundabout)
  - Urban Thoroughfare Intersecting a Neighbourhood Connector
  - Civic Boulevard Intersecting a Neighbourhood Street

**CHAPTER**

**5**

**STREET DESIGN FOR INTERSECTIONS**



Example  
**Rapid Transit Boulevard  
Intersecting a  
Main Street**



**STREET  
DESIGN FOR  
INTERSECTIONS**

[london.ca](http://london.ca)

27



Example  
**Rapid Transit Boulevard  
Intersecting a  
Main Street**



**STREET  
DESIGN FOR  
INTERSECTIONS**

“The pedestrian clearway widens as the planter boxes and trees are discontinued, providing for greater ease of pedestrian movement and queuing.”

“Centre median design requires dedicated transit signals which use the same phasing as the through motor vehicle movement.”

[london.ca](http://london.ca)

28



## Contents:

(under development with City input)

1. Principles of Performance Metrics
2. Options for Measuring Complete Streets Performance

## CHAPTER

# 6

MOVING  
FORWARD WITH  
COMPLETE  
STREETS



## Next Steps

- Share Draft with Stakeholders and Finalize late summer 2018
- Education campaign
- Move towards a network of Complete Streets



# Questions

[london.ca](http://london.ca)





## Parks & Recreation Master Plan Update

May / June 2018

# Accessibility Advisory Committee



## Purpose of Connecting With You

Purpose:

1. To review the plan to update the Parks and Recreation Master Plan this year.
2. Ask for your assistance in sharing the Community Survey with your networks and the public.
3. To request your Committee's input.





## About the Master Plan

Creating a “Game Plan” for Parks, Recreation Programs, Sport Services and Facilities

- The Master Plan provides an overall vision and direction for making decisions. It is a high level/policy directive document.
- It is based on public input, participation trends and usage, best practices, demographic changes and growth forecasts.
- The Plan will be used by the City to guide investment in parks, recreation programs, sport services and facilities over the next ten years and beyond.



## Master Plan Overview

- The City has retained **Monteith Brown Planning Consultants**, **Tucker-Reid & Associates** and **Swerhun Facilitation** to assist in preparing the Update.





## Master Plan Building Blocks

1. Public and Stakeholder Input
2. Demographics and Growth
3. Trends and Usage Data
4. Existing Policies and Guidelines
5. Park, Program, and Facility Distribution
6. Facility Inventories and Asset Management Data



## Project Scope

### Items within Scope:



- **Recreation Programming**, such as aquatic, sport, wellness, arts/crafts, dance/music, and general interest programs provided by the City and other sectors



- **Recreation and Sport Facilities**, such as community centres, pools, sports fields, playgrounds and more



- **Parks & Civic Spaces**, such as major parks, neighbourhood parks, gardens and civic squares



- **Investment in the Community**, such as neighbourhood opportunities, public engagement, sport tourism and more





## Project Scope

### Items out of Scope:

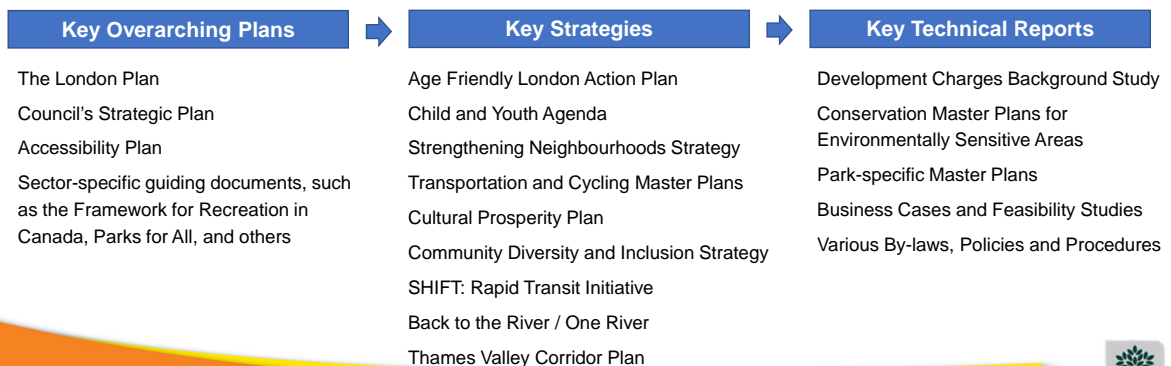
- **Parkland Dedication Policies** (London Plan)
- **Cycling** (London Plan, Transportation and Cycling Master Plans)
- **Natural Heritage and Trails** (London Plan, Conservation Master Plans, ESA Master Plans)
- **Arts, Culture and Heritage** (Cultural Prosperity Plan and related reports)

Although these items are addressed in other studies, the Master Plan will ensure alignment



## Guiding and Supporting Documents

The Master Plan is a Strategy that guides the provision and management of parks, recreation programs, sport services and facilities. It is influenced by several Overarching Plans and informs several Technical Reports.





## Deliverables and Timing

- **Background Research** March to June 2018
- **Engagement** May to July 2018
  - Community Survey (Opens May 23<sup>rd</sup>)
  - Stakeholder Sessions/Focus Groups/Interviews
- **Draft Plan #1** Sept / Oct 2018
- **Draft Plan #2** Oct / Nov
- **Final Plan** presented to the new Council January 2019



## Community Survey

### Purpose

- To establish a broad picture of usage, satisfaction, priorities, demographics

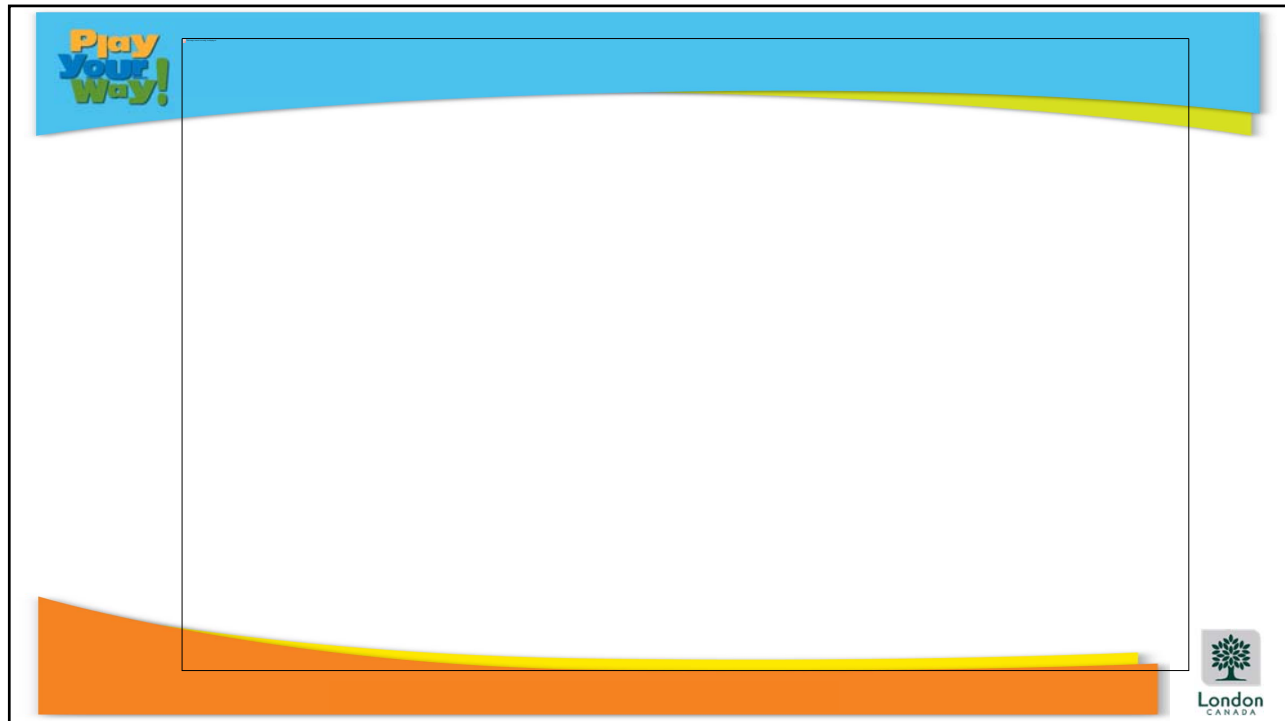
### Timing

- Will be available May 23 until mid-July, hosted through [getinvolved.london.ca](http://getinvolved.london.ca)

### How can you help?

- Share the link to the survey with your networks
- Let us know if you would like posters or postcards to distribute





## Play Your Way! Advisory Committee Input

- Individuals can complete the Community Survey at [getinvolved.london.ca](http://getinvolved.london.ca)
- Tell us about groups or organizations that we should invite to the Stakeholder sessions
- Committee can provide written responses to the Questions

AND / OR

- Committee can provide comments on the last Parks and Recreation Strategic Master Plan (2009) and Interim Update (Jan. 2017)

Email to: [PlayYourWay@london.ca](mailto:PlayYourWay@london.ca)

Play Your Way!

London CANADA



## Advisory Committee Input

### Guiding Questions

1. What are the most pressing **issues and priorities** for your Advisory Committee?
2. How can the City of London's parks, recreation and sport **services and facilities** continue to support the needs of your Committee? Please be specific.
3. How can your Committee, the City and others **work together** to meet future needs?
4. Are there any initiatives that are being contemplated, planned or are being implemented that could tie into these or other priorities for parks, recreation and sport services and facilities?



Parks & Recreation Master Plan Update

**Thank you!**

# Accessibility Advisory Committee

## Report

3rd Meeting of the Accessibility Advisory Committee  
March 22, 2018  
Committee Room #4

Attendance                   PRESENT: J. Madden (Chair), M. Cairns, L. Chappell, M. Dawthorne, A. Forrest, J. Higgins, N. Judges, P. Moore, K. Ramer and P. Quesnel and J. Bunn (Secretary).

ABSENT: K. Schmidt and F. Simmons.

ALSO PRESENT: C. Da Silva, J. DeVito, K. Husain, A. Macpherson, L. McDougall and J. Michaud.

The meeting was called to order at 3:00 PM.

### 1. Call to Order

#### 1.1 Disclosures of Pecuniary Interest

That it BE NOTED that no pecuniary interests were disclosed.

### 2. Scheduled Items

#### 2.1 Conservation Master Plan for the Medway Valley Heritage Forest ESA (South)

That the Conservation Master Plan for the Medway Valley Heritage Forest ESA (South) BE ENDORSED by the Accessibility Advisory Committee; it being noted that the Meeting Minutes from the ESA CMP Planning Process and the AODA Information Meeting held on February 21, 2018, as well as the attached presentation from L. McDougall, Ecologist, were received.

#### 2.2 Playground Proposal for the South West Community Centre

That the implementation of Option 1, as outlined in the attached presentation from J. Michaud, Landscape Architect, for the proposed playground at the South West Community Centre, BE SUPPORTED by the Accessibility Advisory Committee.

### 3. Consent

#### 3.1 2nd Report of the Accessibility Advisory Committee

That the 2nd Report of the Accessibility Advisory Committee, from its meeting held on February 22, 2018, BE RECEIVED.

#### 3.2 City of London Planning Services Committee Information Meeting - Supervised Consumption Facilities and Temporary Overdose Prevention Sites

That the Notice from City of London Planning Services with respect to a Community Information Meeting related to planning for supervised consumption facilities and temporary overdose prevention sites, from L. Maitland, Planner I, BE RECEIVED.



3.3 Notice of Application - City of London - Old East Village

That the Notice of Application dated March 12, 2018, from C. Parker, Senior Planner, with respect to an application by the City of London related to the Old East Village, BE RECEIVED.

3.4 Municipal Council Resolution - 1st Report of the Accessibility Advisory Committee

That the Municipal Council resolution from its meeting held on March 6, 2018, with respect to the 1st Report of the Accessibility Advisory Committee, BE RECEIVED.

**4. Sub-Committees and Working Groups**

None.

**5. Items for Discussion**

5.1 2018 Accessibility Advisory Committee Work Plan

That the revised ~~attached~~ 2018 Work Plan for the Accessibility Advisory Committee BE FORWARDED to the Municipal Council for consideration.

5.2 Accessibility Advisory Committee Deferred List

That the Accessibility Advisory Committee Deferred List, as of March 2018, BE RECEIVED.

**6. Deferred Matters/Additional Business**

6.1 (ADDED) Sub-Committee Chairs and Meeting Dates

That J. Madden BE APPOINTED as Interim Chair of the Built Environment Sub-Committee and P. Moore BE APPOINTED as Chair of the Transportation Sub-Committee; it being noted that both the Built Environment Sub-Committee and the Transportation Sub-Committee will meet the second Tuesday of each month.

**7. Adjournment**

The meeting adjourned at 4:58 PM.

# Accessibility Advisory Committee

## Report

4th Meeting of the Accessibility Advisory Committee  
April 26, 2018  
Committee Room #4

Attendance                   PRESENT: J. Madden (Chair), M. Cairns, M. Dawthorne, A. Forrest, J. Menard, P. Moore and P. Quesnel and J. Bunn (Secretary)

ABSENT: L. Chappell, J. Higgins, N. Judges, K. Ramer, K. Schmidt and F. Simmons

ALSO PRESENT: S. Corman, C. Da Silva, R. Hicks, K. Husain and J. Raycroft

The meeting was called to order at 3:00 PM.

### 1. Call to Order

#### 1.1 Disclosures of Pecuniary Interest

That it BE NOTED that no pecuniary interests were disclosed.

### 2. Scheduled Items

None.

### 3. Consent

#### 3.1 Municipal Council Resolution - 3rd Report of the Accessibility Advisory Committee

That it BE NOTED that the Municipal Council resolution from its meeting held on April 10, 2018 with respect to the 3rd Report of the Accessibility Advisory Committee, was received.

#### 3.2 Municipal Council Resolution - 4th Report of the Environmental And Ecological Planning Advisory Committee

That the Municipal Council resolution from its meeting held on April 10, 2018 with respect to the 4th Report of the Environmental and Ecological Planning Advisory Committee BE DEFERRED to the May meeting of the Accessibility Advisory Committee (ACCAC) in order for the ACCAC to review the draft of the Green Standards for Light Pollution and Bird-Friendly Development and be prepared to make comments.

#### 3.3 Township of Severn - Facility Accessibility Design Standards

That it BE NOTED that a communication dated March 28, 2018, from T. Wellhauser, Division Manager, Facilities, with respect to the adoption of the City of London 2007 Facility Accessibility Design Standards (FADS) by the Township of Severn, was received.

3.4 Notice of Public Information Centre 3 - Adelaide Street North / Canadian Pacific Railway Grade Separation - Municipal Class Environmental Assessment Study

That it BE NOTED that the Notice of Public Information Centre 3 from A. Spahiu, City of London and J. Goldberg, WSP, with respect to the Adelaide Street North/Canadian Pacific Railway Grade Separation Municipal Class Environmental Assessment Study, was received.

3.5 Notice of Public Meeting - The London Plan and the Downtown Plan

That it BE NOTED that the Notice of Public Meeting, dated April 11, 2018, from C. Parker, Senior Planner, with respect to the Official Plan, The London Plan and Downtown Plan Criteria for Downtown Temporary Surface Commercial Parking Lots, was received.

3.6 Notice of Public Meeting - Terms of Reference for Old East Village - Dundas Street Corridor Secondary Plan

That it BE NOTED that the Notice of Public Meeting, dated April 11, 2018, from C. Parker, Senior Planner, with respect to the Terms of Reference for the Old East Village Dundas Street Corridor Secondary Plan, was received.

**4. Sub-Committees and Working Groups**

4.1 Education and Awareness Subcommittee Meeting

That the following actions be taken with respect to the Education and Awareness Sub-Committee report, from the meeting held on April 3, 2018:

a) the "Top Asks" in each of the three key identified areas (transportation, employment, infrastructure), contained in the revised attached Education and Awareness Sub-Committee report, BE ENDORSED by Municipal Council as leading priorities and actions to be undertaken to support accessibility; it being noted that five community open house events identified these three key areas of deficiency as barriers to accessibility; and,

b) a request for delegation status for the Accessibility Advisory Committee BE APPROVED for the May 29, 2018 meeting of the Community and Protective Services Committee to speak to the above.

**5. Items for Discussion**

5.1 Accessible Election 2018

That it BE NOTED that the Voting Accessibility Checklist and the Poll Location documents, appended to the agenda, were received.

5.2 Jeffreybrook Close - Paratransit

That the communications dated April 6, 2018, from D. McDonald and B. Dunne, Participation House and B. Orr, Participation House, with respect to Paratransit service to Jeffreybrook Close BE DEFERRED based on the overlap with the identified priorities being presented to the Community and Protective Services Committee as part of clause 4.1 of this Report; it being noted that consultation, etc. with Paratransit is a part of the approved 2018 Accessibility Advisory Committee Work Plan.

### 5.3 Scooter Charging Stations - S. Connors

That the following actions be taken with respect to the communication dated March 24, 2018, from S. Connors with respect to improving accessibility:

- a) the Civic Administration BE ENCOURAGED to include designated scooter/wheelchair charging stations in any new municipal buildings, or significant renovations to municipal buildings, as well as including this concept in the next revision to the Facility Accessibility Design Standards (FADS); and,
- b) the City of London Accessible Customer Service Training BE AMENDED to include a process for accommodating requests for charging scooters/wheelchairs at existing municipal facilities.

## 6. Deferred Matters/Additional Business

### 6.1 Outdoor Event Guide

That the Manager, Special Events, Community Rentals, or designate, BE REQUESTED to provide an update regarding the status of the Outdoor Event Guide.

## 7. Adjournment

The meeting adjourned at 4:13 PM.

# Minutes from the Education and Awareness Sub-Committee

Date: Apr. 3, 2018

Time: 7 p.m.

Location: Kiwanis Seniors Centre, 78 Riverside Dr., London, ON

Attendees: Jay Menard (chair), Michael Cairns, Ashton Forrest, Jacqueline Madden, and Penny Moore.

## AGENDA

### 1. Top-Five Ask re: “Summary and Compilation of the Accessibility Advisory Committee’s Open House Project.”

The team reviewed the documentation and has put forward its top three categories, with actionable items under each. These items appear in the documentation below. We propose the following motion:

“Be it resolved that the following statement be forwarded and presented to CAPS, with the intent of receiving approval to move to council to undertake action on the priorities disclosed herein:

The Accessibility Advisory Committee asks for the following actions to be undertaken. These asks have been formed through a combination of community statements, lived experience, and historical reference, and galvanized by our five community open houses, wherein these three key areas of deficiency: Transit, Employment, and Infrastructure, were deemed to be of the highest priority and the greatest barriers to a fully inclusive community in London.

#### TRANSIT

The City of London, in order to provide an equitable accessible transit service, will commit to the following improvements:

- Reduction of wait time from three days to a maximum of one day
- Improvement of service call times to match call/wait/response times of that of the larger transit system
- Improve booking system to meet today’s standards
- Increase of availability of accessible spaces on LTC busing or increasing paratransit rides
- Appropriate training and education of transit providers to assist in the respectful and appropriate interaction with people with disabilities, both visible and invisible.

The City of London has a vested interest, from a financial standpoint, in paratransit through its LTC commitments. As such, there can be no deflection of responsibility. An improved overall service would also align with mandates listed in AODA compliance, efforts to increase employment access in the city, the London Plan, the various roadmaps to ending poverty, and a commitment to developing an age-friendly city.

#### EMPLOYMENT

City of London to be a leader in removing barriers currently preventing people with disabilities from becoming employed, by committing to the following:

- Removing artificial, non-job-essential requirements from all postings (CPR, driver’s license, vehicle)
- Improving transit to ensure that people are able to get to interviews or jobs throughout the city
- Providing examples to the community of successfully employed PWD to provide visual representation for youth career aspirational goals

- Work with unions to remove systemic barriers to hiring people with disabilities (flexible hours, work from home, ergonomic issues, breaking up a full-time job into two part-time jobs)
- Working with community partners to improve awareness of accessible hiring best practices and tangible improvements to employment issues, including that the application process is fully accessible

#### And INFRASTRUCTURE

To promote a safe environment and foster equitable access to the community for all Londoners, ACCAC requests that the city:

- Improves notification of construction projects, blocked passages, and road work, bus route changes, and review the timing of pedestrian crossovers to ensure adequate opportunity for people of all ages and abilities to safely navigate through the city;
- Work with heritage departments to find a human-focused solution to promote accessibility in heritage-designated buildings
- Change snow removal minimums and prioritize pedestrian pathways and bus access points when it comes to snow removal.
- Commit to ensuring that all community gathering areas and parks under the City's mandate be fully accessible
- Ensure that City-funded housing programs live up to AODA-compliance metrics and that accessibility is a key component in the approval of development projects, both residential and commercial.”
- Commit to a review and, if required, an update of the 2007 FADS report by the end of 2018.

The Accessibility Advisory Committee also requests delegate status to speak to this request at the May 29, 2018 CAPS meeting.”

## **2. Virtual meeting trial discussion**

The committee engaged in a brief, albeit relatively informal, discussion about hosting virtual meetings.

The committee agreed that it may be easier to implement at a subcommittee level and will investigate opportunities to ensure that meeting areas have the facilities required to support these efforts.

What is needed is the following:

- A facility with free and steady wifi
- An opportunity for participants to phone into a meeting
- A technological solution (whether it's a laptop or tablet), that allows for broadcasting

Jay has committed to investigating the opportunities that are available and presenting these at the next subcommittee meeting.

## **3. Investigate/discuss benefits and impact of making ACCAC brochures/materials available in accessible formats.**

Deferred to next meeting

## **4. Next Meeting Date.**

Tuesday, May 1, 2018 at Kinsmen Recreation Centre, 20 Granville St., London, ON.

7 p.m.



P.O. Box 5035  
300 Dufferin Avenue  
London, ON  
N6A 4L9

April 11, 2018

S. Muscat  
AECOM  
250 York Street  
London, ON N6A 6K2

P. Yeoman  
Manager, Development Services

S. Shannon  
Technologist II

I hereby certify that the Municipal Council, at its meeting held on April 10, 2018 resolved:

That, the following actions be taken with respect to the 4th Report of the Environmental and Ecological Planning Advisory Committee from its meeting held on March 15, 2018:

- a) the following actions be taken with respect to the Victoria Bridge Environmental Assessment:
- i) the detailed design BE REVIEWED by one of the City of London's Ecologist Planners; and,
  - ii) an Environmental Study Report BE REQUIRED in the Request for Proposal;

it being noted that the Environmental and Ecological Planning Advisory Committee received a presentation appended to the 4th Report of the Environmental and Ecological Planning Advisory Committee from S. Shannon, Technologist II, Transportation Planning and Design and S. Muscat, AECOM, with respect to this matter;

b) the revised You, Your Dog and Environmentally Significant Areas brochure BE REFERRED back to the Working Group for further amendments and to report back at the next Environmental and Ecological Planning Advisory Committee meeting;

c) clause 4.2 of the 4th Report BE AMENDED by deleting the clause in its entirety and replacing it with the following:

“the fourth draft of the Green Standards for Light Pollution and Bird-Friendly Development BE REFERRED to the Manager, Development Services, to review and to prepare a version for the Municipal Council's consideration; it being noted that three Advisory Committees have made this recommendation; it being further noted that Section 4.1 of the Guidelines contemplates a light curfew for London; the specific times have been left blank; a suggested light curfew would be from 1:00 AM to 7:00 AM.”;

d) the fourth draft of the Green Standards for Light Pollution and Bird-Friendly Development BE REFERRED to all City of London Advisory Committees for their consideration; and,



e) clauses 1.1, 2.1, 3.1, 3.2, 3.3 and 6.1 BE RECEIVED. (3.1/6/PEC)



C. Saunders  
City Clerk  
/lm

- cc. Chair and Members, Accessibility Advisory Committee  
Chair and Members, Animal Welfare Advisory Committee  
Chair and Members, Diversity Inclusion and Anti-Oppression Advisory Committee  
Chair and Members, Community Safety and Crime Prevention Advisory Committee  
Chair and Members, London Housing Advisory Committee  
Chair and Members, Advisory Committee on the Environment  
Chair and Members, Transportation Advisory Committee  
Chair and Members, Agriculture Advisory Committee  
Chair and Members, London Advisory Committee on Heritage  
Chair and Members, Trees and Forests Advisory Committee  
Chair and Members, Environmental and Ecological Planning Advisory Committee  
Chair and Members, Cycling Advisory Committee  
Chair and Members, Childcare Advisory Committee  
J. Bunn, Committee Secretary  
K. M. Myers, Committee Support Clerk

# GREEN STANDARDS FOR LIGHT POLLUTION & BIRD-FRIENDLY DEVELOPMENT

By – law recommendations for the City of  
London

Prepared by the Ecological and Environmental Advisory Committee (EEPAC), the  
Advisory Committee on the Environment (ACE), & the Animal Welfare Advisory  
Committee (AWAC)

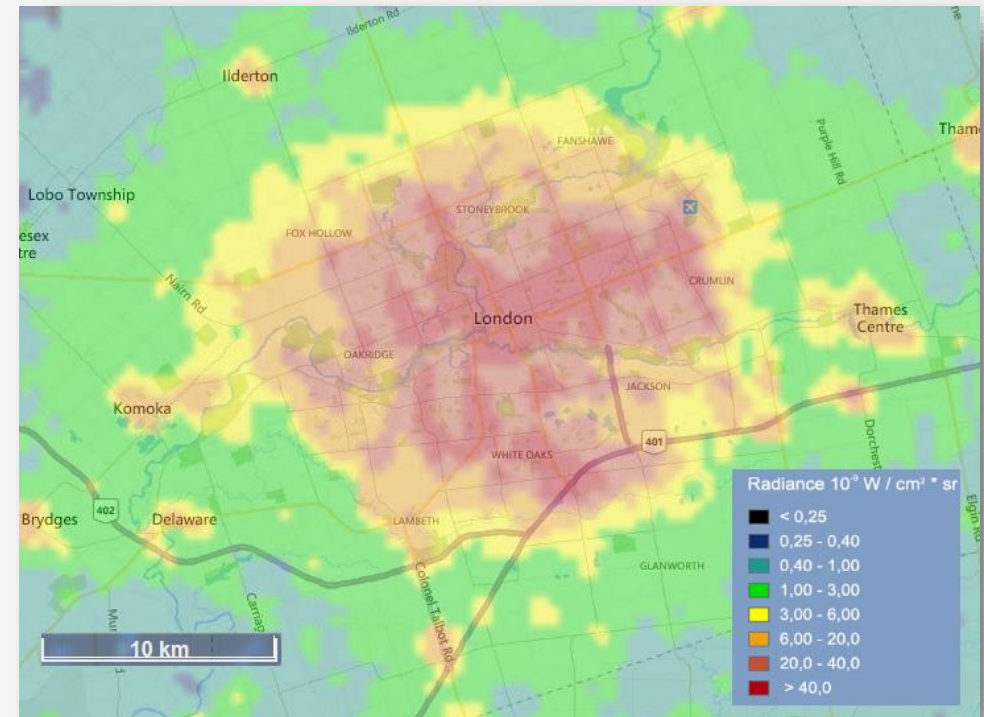
- Fourth Draft -  
March 2018



# TABLE OF CONTENTS

<b>1. DEFINITIONS</b> .....	1
<b>2. PURPOSE AND JUSTIFICATION</b> .....	2
2.1 Environmental Impacts .....	2
2.2 Carbon Footprint and Cost .....	2
<b>3. GENERAL INFORMATION</b> .....	3
3.1 Light Pollution .....	3
3.2 Bird-Friendly Design .....	3
<b>4. LIGHTING DESIGN CRITERIA</b> .....	4-7
4.1 Hours of Operation .....	4
4.2 Universal Outdoor Light Fixture Requirements .....	4
4.3 Residential .....	5
4.4 Non-Residential .....	5
4.5 Specific Use Design Considerations and Lumen Allowance Additions .....	6
4.5.1 Entertainment Venues and Events .....	6
4.5.2 Parking Lots and Garages .....	6
4.5.3 Outdoor Sales Lots .....	6
4.5.4 Service Stations and Gas Stations .....	7
4.5.5 Sports Recreational Fields .....	7
4.5.6 Architectural and Vanity Lighting .....	7
4.5.7 Security Lighting .....	7
4.5.8 Other .....	7
<b>5. EXEMPTIONS</b> .....	8
5.1 Grandfathered Lighting .....	8
5.2 General Exemptions .....	8
5.3 Temporary Exemptions .....	8

<b>6. BIRD-FRIENDLY DESIGN</b> .....	9-11
6.1 Visual Markers .....	9
6.2 Glass Treatment .....	10
6.3 Muting Reflections Options .....	11
6.4 External Lighting .....	11
6.5 Interior Lighting .....	11
<b>7. REFERENCES</b> .....	12
<b>8. CONTRIBUTORS</b> .....	13



Light pollution in London, Ontario. From [www.lightpollutionmap.info](http://www.lightpollutionmap.info)



# 1. DEFINITIONS

Definitions were derived from pre-existing standard documents of other municipalities within Ontario<sup>1-5</sup>. For the purpose of this document, terms shall be defined as follows:

- **Architectural lighting** – outdoor lighting to illuminate landscaping features (e.g. trees, stones, or water), building facades, etc. (excepting signage)
- **Automatic timing device** - any device which controls light fixtures to automatically turn on and off at designated times
- **City** – the City of London, Ontario
- **Council** - the elected municipal council of the City
- **Curfew** - a time defined by the City when outdoor lighting must be reduced or switched off
- **Cut-off shielding** - a luminaire having a light distribution in which zero lux intensity occurs at or above and angle of 90° nadir
- **Decorative lighting** - see *vanity lighting* (below)
- **Diode** - a device allowing one-directional flow of current
- **Direct light** - light directly emitted from the installed light fixture or off of its internal reflector or luminaire
- **Emergency conditions** - lighting that is only switched on during an emergency, exit paths during an emergency situation, or security lighting used solely during alarms
- **Glare** - undue brightness from a light source. Light emitted from fixtures which diminish a bystander's ability to see and/or causes discomfort
- **Grandfathered** - existing light fixtures which may be exempt from these recommendations (Section 6)
- **Hardscape** - permanent human-made elements of an outdoor landscape design
- **Horizontal illuminance** - Amount of light energy landing on a horizontal surface (e.g. the ground)
- **IESNA** - Illuminating Engineering Society of North America or any successor organization
- **Indirect light** - light which is scattered or reflected off of other surfaces
- **Lamp** - any artificial source of light
- **LED (Light Emitting Diodes)** - a popular modern type of lamp
- **Light fixture** - a complete lamp assembly which includes lamp, housing, reflector, mounting bracket, and/or pole socket
- **Light pollution** - any adverse consequence of artificial light including, but not limited to, glare, light trespass, sky glow, energy waste, compromised safety and security, and impacts on the nocturnal environment
- **Light trespass** - any light which falls beyond the property it is intended to illuminate
- **Lumen** - a measurement unit that quantifies the amount of light produced by a lamp or emitted from a luminaire (distinct from 'watt', a measure of power consumption). Conversion to lux is possible
- **Luminaire** - see *Light fixture* (above)
- **Lux** – an international unit used to measure light intensity. Conversion to lumen is possible
- **Official Plan** - the City of London and Planning Area's Official Plan, revised periodically
- **Outdoor lighting** - any outdoor installed or portable luminaire used for flood lighting, general illumination, or advertisement
- **Outdoor recreational facilities** - an outdoor space or venue used for sporting events or entertainment purposes within the city
- **Over-illumination** - lighting of an area beyond that which human vision is able to differentiate
- **Owner** - the registered owner according to the land registry office or the person in the actual occupation of the land
- **Point illuminance** - Amount of light energy measured at a given point
- **Shielded luminaire** - refers to luminaires with an adjustable mounting device allowing aim in any direction and contains a shield, louver, or baffle to reduce direct view of lamp
- **Sky glow** - any brightening of the nighttime sky caused by light directed and/or reflected upwards and/or sideways that reduces the ability to view the night sky
- **Sufficient daylight** - adequate natural lighting such that exterior artificial lighting is not required (approximately 30 minutes after sunrise or 30 minutes prior to sunset)
- **Vanity lighting** - lighting for the purpose of drawing attention. For example, lighting to illuminate landscaping features (e.g. trees, stones, or water), building facades, etc. (excluding signage)
- **Ventilation grate** - street grates or grills which disperse air from structures under roadways and/or sidewalks to reduce heat gain in the summer and allow for passive heating in winter
- **Visual markers** - a physical design visible within a bird's optical wavelength to indicate a barrier is present



London, Ontario downtown at night. Photograph © Joanna Kurowski

# 2. PURPOSE & JUSTIFICATION

The City of London plans to become one of the greenest cities in Canada by reducing its impacts on the environment and its carbon footprint (direction 4, The London Plan)<sup>1</sup>. Specifically, The London Plan contains the goals of minimizing bird strikes on buildings and reducing negative environmental impacts of light pollution<sup>1</sup>. In Canada, it is estimated that 25 million birds die annually from collisions with buildings<sup>22</sup>. The purpose of this document is to provide guideline recommendations for by-law development to achieve these goals. Many specifications in this document are derived from pre-existing guidelines of other Ontario municipalities<sup>2-9</sup>, as well as from the Illuminating Engineering Society of North America (IESNA).

## 2.1 Environmental Impacts

Light pollution impacts the behaviour and survival of birds, mammals, amphibians, fish, and arthropods, and diminishes ecological health both locally and nationally<sup>10</sup>. Specific threats to wildlife include disruption of movement and migration<sup>11-14</sup>, changes in communication and reproductive behaviours (e.g. songbird call times)<sup>15</sup>, shifts in species diversity, altered interactions among species<sup>16,17</sup>, disruption of foraging behaviour, and increased mortality<sup>18-21</sup>.

## 2.2 Carbon Footprint and Cost

Goals of the current London Community Energy Action Plan<sup>23</sup> include an 80% reduction in greenhouse emissions by 2050 and energy cost savings. Policy and design standards to reduce wasted lighting energy are crucial if the City of London is to achieve these goals. Reducing wasted energy is an easy way for the City of London to reduce its carbon footprint; total wasted light energy in the United States is estimated between 80 and 225 kg of CO<sub>2</sub> annually<sup>24</sup>. The negative economic impacts of light pollution on health, wildlife, and astronomy are estimated at \$7 billion each year in the United States<sup>10</sup>.



# 3. GENERAL INFORMATION

## 3.1 Light Pollution

The City of London's Advisory Committee on the Environment (ACE), Environmental and Ecological Protection Advisory Committee (EEPAC), and Animal Welfare Advisory Committee (AWAC) (or 'we the committees') collectively recognize that it is beneficial to protect dark skies through responsible city lighting policies. We the committees recognize that other Ontario municipalities have outdoor lighting ordinances to reduce glare and light intrusion while promoting energy conservation and healthy neighbourhoods.

Light pollution has been defined as "excessive or obtrusive artificial light caused by bad lighting design"<sup>10</sup>. Proper lighting design and illumination standards can reduce light pollution by<sup>20</sup>:

- Preventing lighting in specific areas
- Limiting lighting duration
- Reducing light trespass
- Reducing light intensity

## 3.2 Bird-Friendly Design

Bird-friendly design is critical for city-wide progressive green development standards. Designs to reduce bird mortality may be similar to light pollution reduction strategies, with further inclusion of non-reflective glass and ventilation grates. In accordance with The City of London's Humane Urban Wildlife Conflict Policy, the City of London can take the following measures to reduce bird fatalities:

- Placement of bird-friendly exterior light fixtures in conjunction with glass design elements
- Adoption of a migratory bird policy<sup>8</sup>
- Provision of a comprehensive list of design-based development strategy options to architects, planners, urban designers, building owners and managers, tenants, and homeowners that can be applied to new or existing buildings
- A campaign that promotes awareness of the dangers the urban environment poses to migrating birds such as the City of Toronto's "Lights Out Toronto" event
- Bird-friendly ventilation grates with a porosity no greater than 2 cm<sup>2</sup> or covered with netting to prevent injured birds from falling through
- If transparent noise barriers must be used, they shall have visual markers for birds to perceive and avoid them
- Eliminate reflective glass and mirrors from exterior landscape and building design. Birds are unable to distinguish between reflected and real habitat, which results in increased collision mortality



The night sky in Toronto, Ontario during a power outage in 2003 (left) and on a night with power (right). Photograph © Todd Carlson

# 4. LIGHTING DESIGN CRITERIA

All general recommendations found in Section 4.1 are applicable to all newly installed lighting fixtures. Specific design details can be found in the following sections categorized by site usage type (residential, non-residential, special consideration sites). These recommendations and criteria are amalgamated from the design guideline recommendations of the Model Lighting Ordinance<sup>2</sup>, and various Ontario municipalities (e.g. Toronto, Burlington, and Richmond Hill).

## 4.1 Hours of Operation

Recommendations for luminance and timing of lighting are intended to reduce or eliminate unnecessary light pollution. The IESNA and other documents typically use a light curfew to achieve this. The city of London's curfew begins **at and ends at**

Facilities requiring a curfew adjustment (e.g. restaurants, bars, sports stadiums, hospitals) will be evaluated on a case-by-case basis. During curfew, outdoor lighting must adhere to Section 4.2, bullet 5 option A or B. All residential and non-residential areas, including illuminated signs, are subject to the curfew<sup>36</sup>. Some site uses may warrant a curfew extension (e.g. recreation or entertainment) (see Section 6, General Exemptions).

## 4.2 Universal Outdoor Light Fixture Requirements

The general recommendations laid out below apply to all properties and lots.

- All outdoor light fixture installations must use shielded or cut-off fixtures
- No installed light fixtures will emit light above 90° from a direct downward plane
- Light fixture mounts/poles must have a non-reflective finish to reduce glare
- Maximum lumen levels for different light fixture heights must conform to Table 4.2
- All outdoor installed lighting (unless stated otherwise in Section 4.5) must incorporate one of the following:

A. An automatic switch (or automatic timing device) to extinguish all outdoor lighting curfew. These switches can include photoelectric, astronomic, programmable, or building automation switches. The switch must include a backup power device (battery or other)

B. Occupancy sensors/timers/motion sensors

- Light trespass at the property line will not exceed 11.6 lumens / ft<sup>2</sup> for commercial/industrial property boundaries or 5.8 lumens / ft<sup>2</sup> for residential property boundaries. In the case of a mixed residential/commercial boundary, the value for the residential shall take precedence
- Adjustable, or swivel fixtures, are prohibited
- Pole heights cannot exceed: **Height = Distance from pole to property line x 4** and should not exceed height of adjacent structures. Large parking lots and parking garages with >10 parking spaces are exempt from this recommendation. If a non-residential zone light fixture must be installed higher due to safety considerations, cut-off shielding greater than 90° must be installed
- Glare onto adjacent properties, roadways, and pedestrian thoroughways is prohibited. This may require the use of additional shielding
- All light sources (a.k.a bulbs, diodes) must be directed in such a way so that the light source is not directly visible from adjacent properties
- Openings in buildings which will contribute to light spillage must be blocked or shielded to transmit less than 10% light during the overnight hours (11 PM - 6 AM )
- The use of lasers, search lights, strobe lights, twinkle lights, or chasing lights are prohibited unless used for emergency services

Table 4.2

Mounting Height		Maximum Single Light Fixture
Feet	Meters	Lumens
6	1.83	500 – 1000
8	2.44	600 – 1600
10	3.05	1000 – 2000
12	3.66	1600 – 2400

# 4. LIGHTING DESIGN CRITERIA

## 4.3 Residential

All residential zones (R1 through R11) must adhere to the requirements listed above. If the residential zone is combined with a non-residential zone, the property is strongly encouraged to meet both residential (Section 4.3) and non-residential (Section 4.4) guidelines. Residential guidelines are as follows:

- Maximum single fixture lumen allowance at a main entrance will not exceed 1,260 lumens.
- Maximum lumen allowance for each additional fixture (excluding main entrance, driveway/parking (Section 4.5.2), and motion sensed security lighting (Section 4.5.7), is 315 lumens / fixture.
- In residential buildings with 5 or more stories, shielded directional fixtures with motion-sensors for security are not to exceed 1,260 lumens each.

Additional design criteria for specific types of sites or property uses (including parking lots and security lighting, which may be utilized for residential properties) are included in Section 4.5.

## 4.4 Non-Residential

For all non-residential sites, Table 4.4 must be followed. Site total lumen allowance will be determined by number of parking spaces (if site has fewer than 10) or total square footage of hardscape. These site lumens may be divided among all light fixtures on the property, so long as they adhere to the universal guidelines noted above (Section 4.2) and any specific site guidelines below. Some specific types of site usage (e.g. sale lots or service stations) will have additional design considerations or may receive additional lumen allowance (Section 4.5).

Table 4.4

Light Zone Code	City of London Property Zone Code(s)			Lumen Allowance	
				Lumens / parking space (for sites <= 10 parking spaces)	Lumens / ft <sup>2</sup> of hardscape (sites > 10 parking spaces)
LZ-0	AG	ER	OS	350	0.5
	UR				
LZ-1	AG	DC	HER	490	1.25
	C				
	OC	RO	RRC		
	T	TGS			
LZ-2	AC	GI	OF	630	2.5
	ASA	HS	OR		
	BDC	LI	RSC		
	CC	NF	NSA		
	CF	CSA	OB		
	CR				
LZ-3	DA	RF	SS	840	5
	EX	RSA			
	HI	RT			

Values obtained from the IESNA. This table is intended for non-residential zones only.

LZ0 - "Recommended default zone for wilderness areas, parks, and preserved, and undeveloped rural areas."

LZ1 - "Recommended default zone for rural and low-density residential areas" (may include business parks).

LZ2 - "Recommended default zone for light commercial business districts and high density or mixed-use residential districts" (may include churches, schools, recreation facilities, light industrial zoning).

LZ3 - "Recommended default zone for large cities' business district" (may include business zone districts, commercial mixed-use, and heavy industrial zones).





# 4. LIGHTING DESIGN CRITERIA

## 4.5 Specific Use Design Considerations and Lumen Allowance Additions

The following sections have been provided for specific-use zones and may be applicable to residential or non-residential areas.

### 4.5.1 Entertainment Venues and Events

Entertainment venues and specific events are to be evaluated individually on a case by case basis.

### 4.5.2 Parking Lots and Garages

Lighting in parking lots and garages are primarily for the safety of pedestrians. Parking structure lighting should be modulated so that they transition to match, but not exceed, adjacent roadway lighting levels at exits/entrances. All parking lots must adhere to maximum lumens at property line as described in Section 4.2.

In general, all parking lots shall have an average horizontal illuminance of no more than 25 lux with a maximum point illuminance not to exceed 40 lux. In the individualized case that a parking lot requires enhanced security due to the threat of vandalism or personal safety, the average horizontal illuminance and maximum point illuminance may be no greater than 75 lux.

These recommendations apply to any and all residential, institutional, customer, employee, or general use parking lots.

### 4.5.3. Outdoor Sales Lots

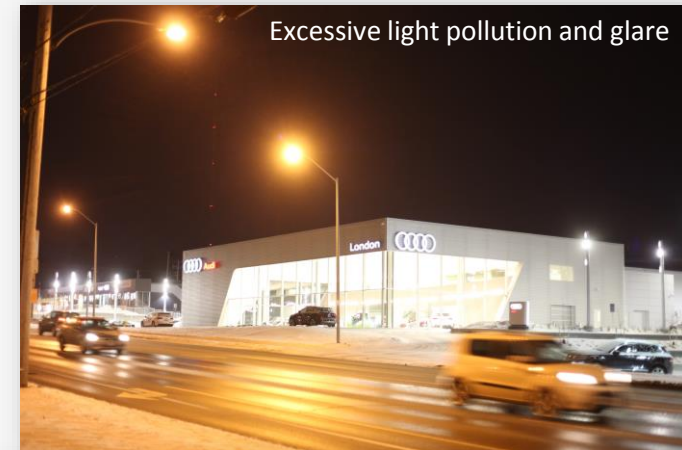
Sales lots are illuminated to draw attention to displayed products and/or for security purposes. The lighting requirements include a graduated illuminance level from the front row (between the roadway and the front row of merchandise) to the last row. In addition to the universal guidelines presented in Section 4.2, site maximum horizontal illuminance is not to exceed:

- 100 lux at the front row
- 50 lux at all other rows
- 20 lux at all pathways/drives on the property

In addition to the lumen allowance provided in Table 4.4, outdoor sales lots used exclusively for the sale of vehicles have an additional allowance of:

- LZ-1, additional 4 lumens / ft<sup>2</sup> hardscape
- LZ-2, additional 8 lumens / ft<sup>2</sup> hardscape
- LZ-3, additional 16 lumens / ft<sup>2</sup> hardscape

These recommendations apply to every outdoor sales lot to be illuminated and are to be incorporated into the light fixture design in accordance to the lumen allowance for non-residential areas.



Two commercial lots in London, Ontario with excessive light pollution and glare (top) and relatively low light pollution and low glare (below). Photographs © Ryan Fraser 2015

# 4. LIGHTING DESIGN CRITERIA

## 4.5.4 Service Stations and Gas Stations

The purpose of lighting a service/gas station is to ensure patron safety and to draw attention and interest to the business. Over-illumination of the property is prohibited, and the illumination limits for property boundaries (Section 4.2) must be maintained. Installed fixtures are to be limited to a canopy whenever possible. In addition to adherence to the universal guidelines presented in Section 4.2, site average horizontal illuminance is not to exceed:

- 100 lux for pump island/under canopy
- 30 lux for service areas
- 20 lux for pathways/drives

In addition to the allowance provided in Table 4.4, service stations/gas stations have additional allowed lumens:

- LZ-1, 4000 additional lumens / pump
- LZ-2, 8000 additional lumens / pump
- LZ-3, 16,000 additional lumens / pump

These values are additional design criteria which need to be implemented in conjunction with the lumen allowance provided for non-residential sites.

## 4.5.5 Sports Recreational Fields

Outdoor sports fields require lighting for clear illumination of players. Sports/recreational fields have been divided into 4 classes:

1. More than 5,000 attendance seats (e.g. universities, colleges, semi-pro players)
2. 1,500 – 5,000 attendance seats (e.g. small universities or colleges, high-attendance high schools)
3. 500 – 1,500 attendance seats (e.g. high schools, training clubs with spectator seats)
4. Less than 500 attendance seats (e.g. leagues, elementary schools, little league, social events)

Using this classification system, illumination levels and lighting equipment must adhere to the IESNA Recommended Practice for Sports and Recreational Area Lighting (RP-6, latest edition). Illuminance values, fixture positioning, pole height, and curfew timing mandated in the IESNA RP-6 shall take precedence over the requirements outlined in this document.

## 4.5.6 Architectural and Vanity Lighting

Architectural lighting is used to highlight and attract attention to architectural features, heritage features, and municipal landscaping, monuments, or fountains. No fixture will be installed to emit light above the horizontal plane (e.g. directly upwards). No light fixture will be aimed at reflective or polished surfaces such as glass, smooth stone, glazed tile, etc. The maximum total illuminance shall not exceed 100 lux. Architectural/vanity lighting must be extinguished at curfew, preferably by automatic switch (Section 4.2, bullet 5, option A).

Lumens from architectural light fixtures must be included in the site maximum lumen allowance for non-residential sites (Table 4.4).

## 4.5.7 Security Lighting

Lighting to ensure the safety of pedestrians shall be used as required. Light fixtures for this purpose shall:

- Reduce brightness contrast
- Ensure no light is directed 90° above the horizontal
- Employ motion sensors (Section 4.2, bullet 5, option B)

These guidelines shall apply to all pedestrian trafficked areas and will be included in the site/lot lumen allowance.

## 4.5.8 Other

- Vehicular and temporary emergency lighting required by Fire and Police departments, or other emergency services shall be exempt from the requirements of the By-law.
- Outdoor lighting utilizing fossil fuels, including torches, lanterns, and open flames.
- Lights used by contractors, providing the lights are located on the property where such work is taking place and only during hours where work is occurring.
- Specific instances where concern for public safety conflicts with the guidelines outlined in this document will be evaluated on a case-by-case basis.

# 5. EXEMPTIONS

## 5.1 Grandfathered Lighting

All existing light fixtures in place at the time of this policy shall be grandfathered. Grandfathered light fixtures which are determined to cause excessive glare or light trespass may be required to be shielded, redirected, or removed. Any modification, relocation, repair, or reinstallation of any grandfathered light fixture must meet the design criteria laid out in Section 4. Should a property undergo a use or zoning change, all light fixtures must be updated to meet the design criteria in Section 4. All new fixtures installed after the date of this policy must meet the design criteria in Section 4.

## 5.2 General Exemptions

These guidelines do not take precedence over highway and road lighting bylaws.

### 5.2.1 Recreational use - after 11 PM - limitation

Where an outdoor recreational use in an outdoor recreational facility continues after 11 PM, outdoor light fixtures required to be on in connection with that use are permitted, but only while that use continues.

### 5.2.2 Entertainment event - after 11 PM - limitation

Where a concert, play or other entertainment event in a park or on other land owned by the Corporation and used for public purposes takes place or continues after 11 PM, outdoor light fixtures required to be on in connection with that event are permitted, but only while the event takes place or continues.

### 5.2.3 Hospitals

All hospitals shall be exempt.

### 5.2.4 Seasonal lighting

Lighting such as Christmas and other holiday lighting shall be exempt.

## 5.2.5 Temporary Exemptions

Any person may submit a written request for temporary exemption from the recommendations by completing a written request form prepared by the City. The written request should include:

- Specific exemption request
- Type and use of exterior lighting involved
- Date(s) of the event
- Duration of the event
- Location of exterior lighting
- Size, wattage, and height of proposed lighting

The owner or lease of the land upon which the prohibited light(s) will be placed shall apply to the city for an exemption. Plans for the location and fixture specifications for the specified light(s) shall be submitted with the application.

An exemption may be granted in whole or in part with terms and conditions. Any breach by the applicant of any of the terms or conditions will render the exemption null and void.



Keith Urban at Rock the Park music festival, London Ontario.  
Photograph © Derek Ruttan 2015



# 6. BIRD-FRIENDLY DESIGN

Mortality rates of birds are increasing due to collisions with buildings, especially during the migratory season. Each year nearly 25 million birds die in Canada from building collisions alone, making reflected light from buildings one of the most deadly threats to birds. With new guidelines in place, a building that emits reflected light which injures or kills birds is now a violation of the provincial Environmental Protection Act (EPA) and the federal Species At Risk Act (SARA). Due to these legal offenses, it is important for buildings to follow bird-friendly design guidelines across Canada.

The following strategies outline recommendations for achieving green standards for bird-friendly development, and are derived from the City of Toronto Green Development Standard: Bird-Friendly Development Guidelines (2007), City of Toronto Green Development Standard Version 2.0 (2015) and City of Toronto Bird-Friendly Development Guidelines Best Practices Glass (2016). These documents work together to reduce the threat of death from buildings by making glass less dangerous to birds and by mitigating light pollution. Options for creating visual markers, treating glass, and muting reflection shall be applied to 85% of glass features and windows for the first 12 m above grade (dimensions relate to typical tree height). Dimensions for visual markers and muting reflection applications are subject to building design and site conditions.

## 6.1 Visual Markers

Visual markers are the most effective technique to reduce window strikes and shall be used on exterior surface glass, balcony railings, fly-through conditions and parallel glass within the first 12 m of the building. The distance between patterns or applications on glass must be a distance of 10 cm by 10 cm or less and at least 5 mm in diameter. Visual markers should have high contrast and be applied to low reflectance, exterior surface glass.



A window with visual marker stripes and a bird decal to prevent bird strikes  
Photograph from [www.smith.edu/news/preventing-bird-collisions-at-mcconnell/](http://www.smith.edu/news/preventing-bird-collisions-at-mcconnell/)



# 6. BIRD-FRIENDLY DESIGN

## 6.2 Glass treatments

Glass treatments shall be applied above 12 m to the height of or anticipated height of the surrounding tree canopy and vegetation at maturity in sites close to natural areas such as ravines or woodlots. Glass treatments must also be applied to glass adjacent to or in the vicinity of elevated landscapes such as podium gardens and green roofs. Glass treatment options must also be applied to windbreaks, solariums and greenhouses in order to create sufficient visual markers for birds.

**UV glass** can be effective since birds are able to see into the UV spectrum, making UV treated glass opaque to birds but translucent to humans. Such UV glass must be tested and approved by a third party for effectiveness as outlined in the 2014 Toronto Green Standard version 2.0.

**Patterned or 'fritted' glass** refers to glass which contains opaque or translucent images or abstract patterns. The images are created by using dots in a variety of sizes and densities which are most effective on the exterior surface of the glass. Only non-reflective glass should be used when combined with fritted patterns. Pattern design should follow the outlines in 6.1: Visual Markers.

**Film products** refers to external film applications or laminates which contain images or patterns and can be designed to enhance the architectural design of the building.

**Decals** with no more than 5 to 10 cm of clear spaces between patterns can be used. Decals must be located on the exterior glass.

**Decorative Grilles and Louvres** refer to exterior grille features which if applied must be 10 cm by 10 cm or less.

**Fenestration Patterns** refer to multiple paned glass containing horizontal and vertical mullions. Panes must be no more than 28 cm with 10 cm or less the most effective visual marker.

**Art work** applied to the interior or exterior of windows can be used to provide sufficient visual markers while allowing for natural light.



Photo: John Carley



Photo: FLAP Canada



Photo: MMC Architects



Photo: MMC Architects

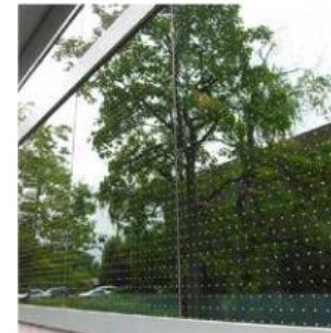


Photo: FLAP Canada



Photo: FLAP Canada

# 6. BIRD-FRIENDLY DESIGN

## 6.3 Muting Reflections Options

**Awnings and overhangs** to mute images at ground floor level.

**Sunshades** refer to applications to reduce direct sunlight, while allowing indirect light into rooms. This feature mutes reflection thus reducing window strikes.

## 6.4 External Lighting

**Decorative Lighting** should be eliminated wherever possible. For existing buildings, decorative lighting should be projected downward and turned off during migratory season (September – November, March – May)

**Advertising Lighting** must be lit from above to reduce the volume of light being projected unnecessarily into the night sky.

**Event and Festival Lighting** such as spotlights and search lights must be prohibited during bird migration season.

**Roof Top Lighting** that should be prohibited. Vanity lighting may be allowed only if the following conditions are met:

- Exterior light fixtures are installed to prevent unnecessary light spillage.
- Vanity lighting is turned off from 11 PM - 5 AM year-round without exception utilizing an automatic device.

Overrides afterhours may be provided by a manual or occupant sensing device with a limit of 30 minutes.

## 6.5 Interior Lighting

**Bird Friendly Operational Systems and Practices** refers to the use of operating and system practices by residents, tenants, building owners, and managers to help reduce migratory bird fatalities. The following strategies can be used:

- **Installation of interior task lighting** at work stations be the recommended light source during evening work hours, increasing energy efficiency, reducing light pollution, and migratory bird fatalities. Overhead lighting be turned off at night and focused lighting such as task lighting be used during bird migration season.
- **Provision of shielding from interior generated light** with less than 10 % transmittance overnight for all fenestrations (windows, doors, skylights, curtained walls), for example blinds and curtains.
- **Motion-Sensitive Lighting** to be installed and retrofitted in lobbies, walkways, corridors, and operating systems that automatically turn off lights during after work hours.
- **Internal Location of Greenery:** Building owners and managers must locate greenery away from clear glass and minimize lighting levels through motion sensing lighting in ground floor lobbies, walkways and corridors and retrofit glass in these areas wherever possible with bird friendly window applications in order to meet the Bird Friendly Green Standard (birds drawn into cityscapes by light pollution seek safety by flying towards greenery and are extremely dangerous in these areas.)



# 7. REFERENCES

- 1 Corporation of the City of London. 2015. The London Plan. London, ON. 463p. (Available at:
- 2 IDA-IES, J. 2011. Model lighting Ordinance (MLO). Retrieved from [http://darksky.org/wp-content/uploads/bsk-pdf-manager/16\\_MLO\\_FINAL\\_JUNE2011.PDF](http://darksky.org/wp-content/uploads/bsk-pdf-manager/16_MLO_FINAL_JUNE2011.PDF).
- 3 Corporation of the City of London. 2015. Roadway Lighting & Traffic Control - Street lights. London, ON. (Available at: <https://www.london.ca/residents/Roads-Transportation/traffic-management/Pages/Street-Lights.aspx>).
- 4 Corporation of the City of London. 2016. Roadway Lighting & Traffic Control - Transportation Energy Optimization Plan. London, ON. (Available at: <https://www.london.ca/residents/Roads-Transportation/traffic-management/Pages/Transportation%20Energy%20Optimization%20Plan.aspx>).
- 5 Corporation of the City of Burlington. 2008. Guidelines for outdoor lighting. Burlington, ON. 22p. (Available at: <https://www.burlington.ca/uploads/92/635575154693976963.pdf>).
- 6 Corporation of the City of Mississauga. 2012. Nuisance lighting by-law 262-12. Mississauga, ON. 7p. (Available at: <http://www.mississauga.ca/file/COM/nuisancelighting2013.pdf>).
- 7 Hiscocks, P. D. 2011. Summary of lighting regulations. (Toronto Chapter, Royal Astronomical Society of Canada, Toronto, ON).
- 8 Corporation of the City of Toronto. 2007. City of Toronto Green Development Standard: Bird-Friendly Development Guidelines. Toronto, ON. 42p. (Available at: [https://www1.toronto.ca/city\\_of\\_toronto/city.../pdf/development\\_guidelines.pdf](https://www1.toronto.ca/city_of_toronto/city.../pdf/development_guidelines.pdf)).
- 9 Corporation of the City of Richmond Hill. 2008. Chapter 105: Light pollution by-law. (Available at: [www.richmondhill.ca/documents/municipalcode/1050.pdf](http://www.richmondhill.ca/documents/municipalcode/1050.pdf)).
- 10 Gallaway, T., Olsen, R. N. & Mitchell, D. M. 2010. The economics of global light pollution. *Ecological Economics* 69, 658-665.
- 11 Perkin, E. K. et al. 2011. The influence of artificial light on stream and riparian ecosystems: questions, challenges, and perspectives. *Ecosphere* 2, art122.
- 12 Kriska, G., Bernath, B., Farkas, R. & Horvath, G. 2009. Degrees of polarization of reflected light eliciting polarotaxis in dragonflies (Odonata), mayflies (Ephemeroptera) and tabanid flies (Tabanidae). *Journal of Insect Physiology* 55, 1167-1173.
- 13 Stone, E. L., Jones, G. & Harris, S. 2009. Street lighting disturbs commuting bats. *Current Biology* 19, 1123-1127.
- 14 Moore, M. V., Pierce, S. M., Walsh, H. M., Kvalvik, S. K. & Lim, J. D. 2001. Urban light pollution alters the diel vertical migration of *Daphnia*. *Internationale Vereinigung fur Theoretische und Angewandte Limnologie Verhandlungen* 27, 779-782.
- 15 Miller, M. W. 2006. Apparent effects of light pollution on singing behavior of American robins. *The Condor* 108, 130-139.
- 16 Davies, T. W., Bennie, J., Inger, R., Ibarra, N. H. & Gaston, K. J. 2013. Artificial light pollution: are shifting spectral signatures changing the balance of species interactions? *Global Change Biology* 19, 1417-1423.
- 17 Meyer, L. A. & Sullivan, S. M. P. 2013. Bright lights, big city: influences of ecological light pollution on reciprocal stream-riparian invertebrate fluxes. *Ecological applications* 23, 1322-1330.
- 18 van Langevelde, F., Ettema, J. A., Donners, M., WallisDeVries, M. F. & Groenendijk, D. 2011. Effect of spectral composition of artificial light on the attraction of moths. *Biological Conservation* 144, 2274-2281.
- 19 Longcore, T. & Rich, C. 2004. Ecological light pollution. *Frontiers in Ecology and the Environment* 2, 191-198.
- 20 Gaston, K. J., Davies, T. W., Bennie, J. & Hopkins, J. 2012. Reducing the ecological consequences of night-time light pollution: options and developments. *Journal of Applied Ecology* 49, 1256-1266.
- 21 Gaston, K. J., Bennie, J., Davies, T. W. & Hopkins, J. 2013. The ecological impacts of nighttime light pollution: a mechanistic appraisal. *Biological Reviews* 88, 912-927.
- 22 Machtans, C. S., Wedeles, C. & Bayne, E. M. 2013. A first estimate for Canada of the number of birds killed by colliding with building windows. *Avian Conservation and Ecology* 8, 6.
- 23 Corporation of the City of London. 2014. Community Energy Action Plan. London, ON. 32p. (Available at: <https://www.london.ca/residents/Environment/Energy/Documents/Community%20Energy%20Plan.pdf>).
- 24 Claudio, L. 2009. Switch on the night: policies for smarter lighting. *Environmental Health Perspectives* 117, A28-A31.
- 25 Reiter, R. J. et al. 2007. Light at night, chronodisruption, melatonin suppression, and cancer risk: a review. *Critical Reviews in Oncogenesis* 13.
- 26 Blask, D. et al. 2012. Light pollution: adverse health effects of nighttime lighting. 27.
- 27 Wyse, C., Selman, C., Page, M., Coogan, A. & Hazlerigg, D. 2011. Circadian desynchrony and metabolic dysfunction; did light pollution make us fat? *Medical Hypotheses* 77, 1139-1144.
- 28 Anisimov, V. N. 2005. Light pollution, reproductive function and cancer risk. *Neuro Endocrinology Letters* 27, 35-52.
- 29 Cinzano, P., Falchi, F. & Elvidge, C. D. 2001. The first world atlas of the artificial night sky brightness. *Monthly Notices of the Royal Astronomical Society* 328, 689-707.
- 30 Gallaway, T. 2010. On light pollution, passive pleasures, and the instrumental value of beauty. *Journal of Economic Issues* 44, 71-88.
- 31 Lyytimäki, J. 2013. Nature's nocturnal services: light pollution as a non-recognised challenge for ecosystem services research and management. *Ecosystem Services* 3, e44-e48, doi:<http://dx.doi.org/10.1016/j.ecoser.2012.12.001>.
- 32 Mizon, B. Light pollution: responses and remedies. (Springer Science & Business Media, 2012).
- 33 Sherman, L. et al. 2011. Preventing crime: what works, what doesn't, what's promising. (University of Maryland Department of Criminology and Criminal Justice).
- 34 Morrow, E. N. & Hutton, S. A. The Chicago Alley Lighting Project: Final Evaluation Report. (Illinois Criminal Justice Information Authority, 2004).
- 35 Steinbach, R. et al. 2015. The effect of reduced street lighting on road casualties and crime in England and Wales: controlled interrupted time series analysis. *Journal of Epidemiology and Community Health*. doi:10.1136/jech-2015-206012.
- 36 Corporation of the City of Richmond Hill. 1995. Chapter 1050 - Light pollution. Richmond Hill, ON. 21p. (Available at: <http://starlightcascade.ca/rl/richmondhill-bylaw1050.pdf>).
- 37 City of Toronto, City Planning. Bird-friendly best practices glass. 2016. (Available at: <https://www.toronto.ca/wp-content/uploads/2017/08/8d1c-Bird-Friendly-Best-Practices-Glass.pdf>)



# 8. CONTRIBUTORS

## **Ecological and Environmental Planning Advisory Committee (EEPAC)**

Lauren Des Marteaux

Andrea Boyer

Caitlin Kushnir

Peter Ferguson

Matthew Watson

Natalie St. Amour

Carol Dyck

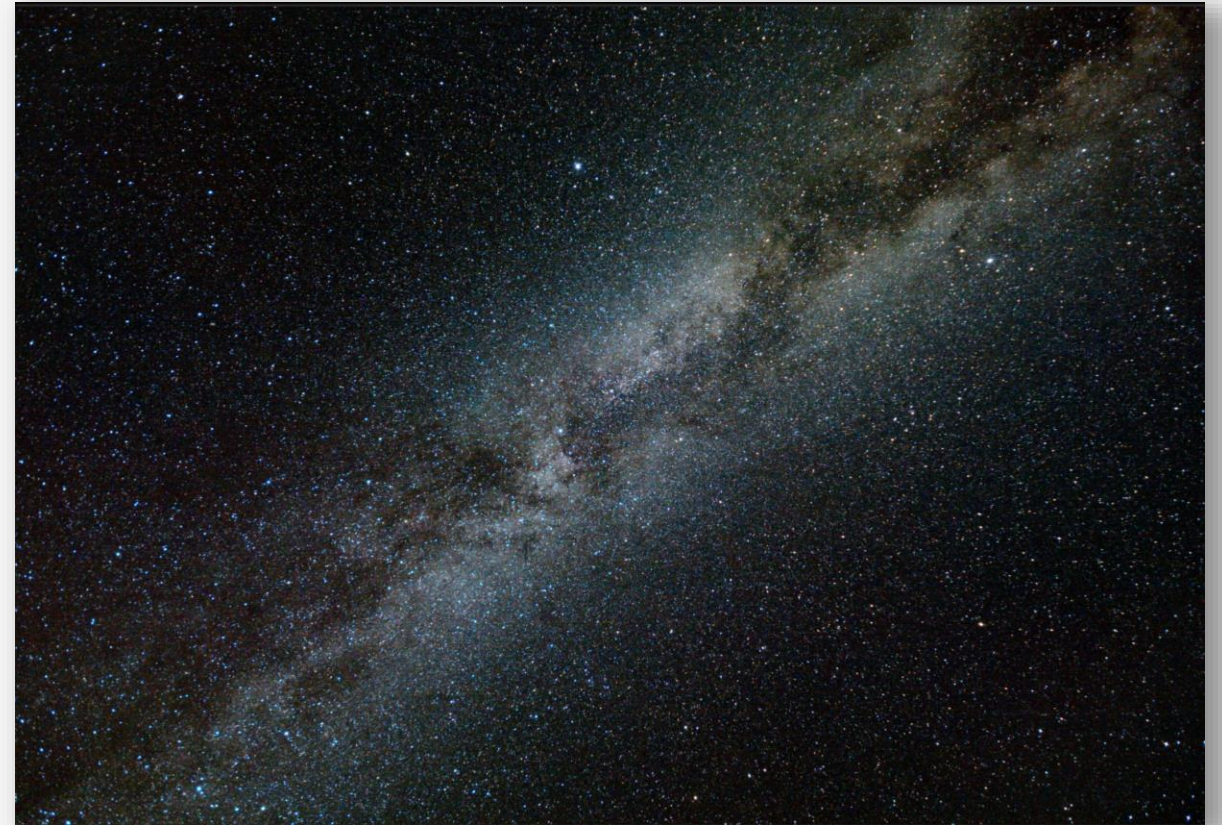
## **Advisory Committee on the Environment (ACE)**

Becki Schulz

Susan Hall

## **Animal Welfare Advisory Committee (AWAC)**

Wendy Brown



The Summer Triangle and Milky Way, from Fingal, Ontario.  
Photograph © Ryan Fraser and Trevor McNaughton 2012





P.O. Box 5035  
300 Dufferin Avenue  
London, ON  
N6A 4L9

**London**  
CANADA

April 25, 2018

C. Saunders  
City Clerk

I hereby certify that the Municipal Council, at its meeting held on April 24, 2018 resolved:

That, on the recommendation of the City Clerk, the proposed by-law appended to the staff report dated April 17, 2018 as Appendix "A" BE INTRODUCED at the Municipal Council meeting to be held on April 24, 2018 for the purpose of amending By-law No. CPOL.-18-214 being "A by-law to revoke and repeal Council policy related to Mayor's New Year's Honour List and replace it with a new Council policy entitled Mayor's New Year's Honour List Policy", by replacing the Mayor's New Year's Honour List Policy with a new Mayor's New Year's Honour List Policy to change the name of the nomination category "Persons with Disabilities" to the name "Accessibility"; and to change the current description of the award from "(i.e. contributions to the promotion and facilitation of a barrier-free community for citizens of all abilities, including those with disabilities)" to "(awarded to those who, through action and/or example, foster an environment of inclusion that embraces citizens of all abilities)". (2.2/9/CSC)

B. Westlake-Power  
Manager of Legislative Services  
/hw

cc: L. Rowe, Deputy City Clerk  
A. Bush, Administrative Assistant II  
Chair and Members, Accessibility Advisory Committee  
Documentation Services Representative



P.O. Box 5035  
300 Dufferin Avenue  
London, ON  
N6A 4L9

April 25, 2018

J. Fleming  
Managing Director, Planning and City Planner

I hereby certify that the Municipal Council, at its meeting held on April 24, 2018 resolved:

That the following actions be taken with respect to the Conservation Master Plan for the Medway Valley Heritage Forest Environmentally Significant Area (South):

- a) the Conservation Master Plan (CMP) for the Medway Valley Heritage Forest Environmentally Significant Area (South) (ESA), appended to the staff report dated April 16, 2018, **BE REFERRED** back to the Civic Administration to report back at a future meeting of the Planning and Environment Committee, after undertaking the following actions:
- i) deleting proposed bridge A from the CMP;
  - ii) deleting the proposed bridge D from the CMP;
  - iii) undertaking further public consultation with respect to those portions of the CMP that effect changes to the eastern boundary of the ESA, including the use of public streets;
  - iv) undertaking further consultation with the Accessibility Advisory Committee (ACCAC), the Environmental and Ecological Planning Advisory Committee (EEPAC), the Upper Thames River Conservation Authority and neighbouring First Nations Governments and Organizations with respect to improved trail access and conditions;
  - v) actions be taken to discourage crossings of the creek at sites A, B, C, D and E, as identified in the CMP;
  - vi) hardscaped surfaces on the level 2 trails be limited to the greatest extent possible;
- b) staff **BE DIRECTED** to work with our community partners in the implementation of the CMP with regard to external funding opportunities;
- c) the members of ACCAC, EEPAC and the Local Advisory Committee and the community **BE THANKED** for their work in the review and comments on the document;
- d) the Civic Administration **BE DIRECTED** to report back on the following matters with respect to the Medway Valley Heritage Forest Environmentally Significant Area (south) Conservation Master Plan:

- i) ways to improve the public consultation process for any Environmentally Significant Areas and Conservation Master Plans; and,
- ii) amending the Trails Systems Guidelines to incorporate consultation with neighbouring First Nations, Governments and Organizations at the beginning of the process;

it being noted that the Planning and Environment Committee reviewed and received the following communications with respect to this matter:

- a Municipal Council resolution adopted at its meeting held on January 16, 2018;
- the Environmental and Ecological Advisory Committee's revised statement and recommendations;
- a communication dated April 7, 2018 from S. Dagnone, 675 Eagletrace Drive;
- a communication from S. and S. Pacifico, 1607 Gloucester Road;
- a communication from S. Levin, 59 Longbow Road;
- a communication dated April 9, 2018 from A. Cojocar, 2345 Humberside Common;
- a communication from L. Kari, 56 Doncaster Place;
- a communication dated April 7, 2018 from L. Robinson, 2120 Valleyrun Boulevard;
- a communication dated April 7, 2018 from C. Robinson, 2120 Valleyrun Boulevard;
- a communication dated April 8, 2018 from D. Wake, 597 Kildare Road;
- a communication dated April 6, 2018 from D. Lucas, Vice Principal, Finance and Administration, Huron University College;
- a communication dated April 7, 2018 from M. Trotter, 2408 Meadowlands Way;
- a communication dated April 8, 2018 from K. and L. Zerebecki, 205-240 Village Walk Boulevard;
- a communication from R. Croft, by e-mail;
- a communication from R. Agathos, by e-mail;
- a communication from P. Agathos, 2112 Valleyrun Boulevard;
- a communication from C. Parvulescu, 397 Castlegrove Boulevard;
- a communication dated April 7, 2018 from C. Sheculksi, Vice-President, Sunningdale West Residents Association;
- a communication from B. Morgan, 50 Doncaster Place;
- a communication from L. Symmes, 797 Haighton Road;

- a communication dated April 8, 2018 from R. and A. Menon, 2131 Valleyrun Boulevard;
- a communication dated April 7, 2018 from T. Thrasher, 2048 Valleyrun Boulevard;
- a communication dated April 7, 2018 from J. Peters, 2048 Valleyrun Boulevard;
- a communication dated April 5, 2018 from E. Westeinde, 3645 Boswick Road North;
- a communication dated April 8, 2018 from D.R. Donnelly, Donnelly Law;
- a communication dated April 3, 2018 from G. Miller, Miller Environmental Services Inc.;
- a communication from W. and F. Fretz, 1984 Valleyrun Boulevard;
- a communication from B. Adair, 675 Eagletrace Drive;
- a communication dated April 7, 2018 from L. Carriere, 73-825 Dundalk Drive;
- a communication dated April 7, 2018 from J. Robinson, 2156 Valleyrun Boulevard;
- a communication from S. Russell, by e-mail;
- a communication from Dr. A. Guy Plint, Professor of Geology, Western University;
- a communication dated March, 2018 from C. Dyck, by e-mail;
- a communication from M. Does, 161 Bruce Street;
- a communication dated April 5, 2018 from Susan Hall, by e-mail;
- a communication from G. Neish, 1706 Ironwood Road;
- a communication dated April 4, 2018 from R. Duench, 121, Wychwood Park;
- a communication from W. Van Hemessen, Terrestrial Ecologist, Parsons Inc.;
- a communication dated April 5, 2018 from A. Caveney, 46 Kingspark Crescent;
- a communication from J. Bruce Morton, 11 Doncaster Avenue;
- a communication dated March 4, 2018 from G. Wood, by e-mail;
- a communication dated February 5, 2018 from C. Blake, 18 Braemar Crescent;
- a communication dated March 28, 2018 from J. Davies, 60 Longbow Road;
- a communication dated April 4, 2018 from G. McGinn-McTeer, Stoneybrook Heights-Uplands Residents Association;
- a communication dated March 29, 2018 from P. Pendl and A. Vanstone, 74 Green Acres Drive;
- a communication dated February 12, 2018 from J. Nesbitt, by e-mail;

- a communication from C. Boles, 455 Piccadilly Street;
- a communication dated January 30, 2018 from D. Bickford, 64 Doncaster Place;
- a communication dated January 24, 2018 from S. Levin, President, Orchard Park Sherwood Forest Ratepayers;
- a communication from J. Farquar, 383 St. George Street;
- a communication dated March 29, 2018 from G. and S. Sinker, 1597 Gloucester Road;
- a communication dated April 8, 2018 from P. Hayman, 77 Doncaster Avenue;
- a communication dated February 7, 2018 from D. Potten, 110 West Rivertrace Walk;
- a communication dated April 9, 2018 from D. Schmidt, Development Manager, Corlon Properties;
- a communication from I. Connidis, 38 Doncaster Avenue;
- a communication dated April 9, 2018 from S. Handler, 54 Doncaster Place; and,
- a communication dated April 4, 2018 from Professor J. Blocker, et. al;

it being pointed out that at the public participation meeting associated with these matters, the individuals indicated on the attached public participation meeting record made oral submissions regarding these matters. (AS AMENDED) (3.2/7/PEC)



C. Saunders  
City Clerk  
/lm

- cc. A. Macpherson, Manager, Environmental and Parks Planning  
L. McDougall, Ecologist Planner  
D. Burns, Executive Assistant  
Chair and Members, Environmental and Ecological Planning Advisory Committee  
Chair and Members, Accessibility Advisory Committee  
PEC Deferred  
External cc list in the City Clerk's Office

## PUBLIC PARTICIPATION MEETING COMMENTS

### 3.2 PUBLIC PARTICIPATION MEETING – Medway Valley Heritage Forest Environmentally Significant Area (South) – Conservation Master Plan

- Jennifer Petruniak, Dillon Consulting – see attached presentation.
- *(Councillor T. Park indicating that there is a lot of talk about AODA and she did not hear anything about the general exceptions that are available under the AODA; under Section 80.1.5(5), it says that the exceptions to the requirements that apply to recreational trails and beach access routes are permitted where obligated organizations can demonstrate one or more of the following and in subsection 5, it says if there is a significant risk that the requirements, or some of them, would adversely affect water, fish, wildlife, plants, invertebrates, species at risk, ecological integrity or natural heritage value, whether the adverse effects are direct or indirect; the report itself, from her perspective, felt fairly silent on that; wondering if staff could address that; Mrs. J. Petruniak, Dillon Consulting, responding that through the Conservation Master Plan process, Phase 1 really dealt with identifying what needed that most amount of protection, what was the most ecologically sensitive within the Valley and that is where they defined the Nature Reserve zones; everything else that already had some indication of cultural disturbance, and this is through the Provincially recognized ecological land classification that these delineations are made to identify vegetation communities; these are areas that are already disturbed; where AODA compliant features, trails are proposed, that is only within the natural environment zone where it has already been determined that these features in here are not ecologically sensitive and are not prone to disturbance.*
- *Councillor A. Hopkins asking for clarification on the presentation; asking how many bridges are currently on there; Mrs. J. Petruniak, Dillon Consulting, responding that there are currently two proposed on the southern part of the Medway Valley Environmentally Significant Area; Councillor Hopkins asking to have the latest trails identified on the map; asking if trails have been installed recently; Mrs. J. Petruniak, Dillon Consulting, responding that the majority of trails in the plan are existing trails; there are some trails that have been identified for upgrade and these might be wet and muddy and as people use them, they go around so that causes the trail to widen; advising that those are existing trails that they have recommended improvements, a boardwalk may be more suitable; the only new trail is where they are proposing a Level 2 trail to direct users further away from the false rue anemone that loops in the northern part and to keep that Level 2 trail fully in the natural environment zone as well as the trail in the Attawandaron Park to delineate the naturalization zones in there as well as there is one trail that is currently temporarily closed that is proposed to be reopened on the top of the slope in the area that is currently mown grass as part of naturalization to help delineate where the naturalization begins; Mr. A. Macpherson, Manager, Environmental and Parks Planning, adding that on the slide shown at the meeting you can see the natural area that is mown grass and that is the only new trail that is being proposed, which is through the lawn area of parkland; the other ones that you can see on the map from A5, an existing trail, but the proposal is to upgrade that from a Level 1 to a Level 2, A11 down the hill towards proposed Bridge D is an existing trail and to upgrade that from a Level 1 to a Level 2; Councillor Hopkins confirming that it is just those two trails being upgraded; Mr. A. Macpherson, Manager, Environmental and Parks Planning responding yes, just those two trails.*
- *Councillor M. Salih enquiring about the \$2,100,000, in a ten year span, with maintenance and everything, does the \$2,100,000 include that long-term cost or what is the life expectancy costs of trail maintenance; Mr. A. Macpherson, Manager, Environmental and Parks Planning, responding that the City has an ongoing Capital Budget that is carried out each year and that funding is only \$200,000 divided amongst the seven Environmentally Significant Areas but for 2018 and 2019 there is money identified for the Medway Valley; they will have to come back through the next budget process seeking additional funding for that capital program to implement this Master Plan; the ongoing maintenance, fortunately, is covered through the Upper Thames River Conservation Authority's contract so they will look after trail maintenance, tree hazards, by-law enforcement,*

restoration of small boardwalks and structures through the Operating Budget as they do yearly; *Councillor M. Salih asking if they know, roughly, how much staff will be asking for when they come back asking for those additional funds*; Mr. A. Macpherson, Manager, Environmental and Parks Planning, responding that they will put it through a Business Case for a four year budget but it would be in the nature of approximately \$1,900,000 to implement this Master Plan over time and that will be stretched out beyond the four year budget ask because it is a ten year Master Plan.

- *Mayor M. Brown enquiring about the multi-use pathway that is being recommended; confirming that that is just outside of the Environmentally Significant Area to the west*; Mrs. J. Petruniak, Dillon Consulting, responding that it is right on the edge of the Environmentally Significant Area, currently it is mown grass; the idea is that they would be working with a local Trail Advisory Group to sight exactly where that trail is but to put that trail in and then to basically naturalize the area to continue to improve the ecological integrity in that area; *Mayor M. Brown asking about the reference to the independent ecologist and the credentials that person carries, asking why that was important to be part of this presentation and expand a bit on the credentials*; Mrs. J. Petruniak, Dillon Consulting, asking for confirmation that the Mayor is referring to Appendix “D” of the staff report; responding that the reason that they felt that it was important to include that in there is that Dillon Consulting has been working on this file since 2013 and the City of London has been working on it since it started and this is someone who came to them and asked them what they are doing in the Medway, they know there are historic populations of false rue anemone there and what are they seeing as they have the most current data; indicating that they worked with Holly and they worked with the Federal government and their mapping experts to really explain what past information the City of London had, what current information Dillon had collected and what, under the *Endangered Species Act*, Provincially, what they were doing to recover the species and what they had seen over the course of 2014, 2015 and 2016 and through that you will see references to the conversations that she had with them and to the documents the City provided, as well as Dillon Consulting, that helped inform the recovery strategy that was reviewed by Environment Canada scientists, has gone through their public consultation process as well; felt that her opinion would help the Planning and Environment Committee understand that what is being proposed here, they are already doing some great work to help recover the species and some of the things that are actually shown on this slide are completely aligned with the recovery strategy and what they are suggesting to help further recover and help protect the species and they have recognized that the population in Medway is healthy, it is thriving, they are seeing that the population, with any population of species it is going to fluctuate year over year and they are going to see those things, as the weather, it does crazy things and this is a floodplain plant that you can actually only see it for very few weeks of the year, it is something we call an ephemeral plant; working through all those things, it can be a very abstract concept to this so they thought it was important to somebody who is recognized who identifies species in decline, who works with the Ministry of Natural Resources, an independent body as part of COSSARO, to identify what kinds of things a species needs for recovery and what causes its decline and threats as well as working with the Federal government and she was the lead author on the recovery strategy; *Mayor M. Brown asking for an expansion on COSSARO*; Mrs. J. Petruniak, Dillon Consulting, responding that under the Provincial *Endangered Species Act*, they recognize an independent committee, much like the Advisory Committees that we have formed in the City of London, that acts as a scientific arm and what COSSARO’s job is, is it is made up of twelve members and twice a year they assess species; they are given a list of species and they decide, is this species threatened, is this species endangered, is it of special concern, does the government need to sit up and pay attention as to what is going on with the species and create a plan for its recovery so that they do not lose it; COSSARO is different than the Federal government, COSEWICK might be something else that you have heard; COSEWICK is an Advisory Committee to the Minister for Environment Canada and for Fisheries and Oceans and they provide their recommendations; COSSARO, on the other hand, is independent and what

they say goes, the government must adopt their recommendations when it comes to species protection.

- *Councillor H.L. Usher wondering how much of this work is going to be new asphalt paving; Mrs. J. Petruniak, Dillon Consulting, confirming that the Councillor is asking what percentage of the trails are going to be AODA compliant; there have not been any determinations yet as to what the actual covering of the trail is going to be, Level 1 is dirt, Level 2 is firm and stable AODA compliant but that can take many forms, it can be limestone screenings or wood chips in some cases; this is a Valley, it is prone to flooding so those kinds of surfaces may not be appropriate so a more granular asphalt surface could be implemented but it is the specific details that are site specific that will happen once they get past the consultation planning; Councillor Usher indicating that he is glad that Mrs. Petruniak switched his question because what he wanted to know was pavement but AODA compliant is good enough for him; enquiring that all the asphalt is within the Environmentally Significant Area; Mrs. J. Petruniak, Dillon Consulting, responding that yes, any of the Level 2 AODA compliant trails are within the Environmentally Significant Area; Councillor Usher asking about the increased use of trails and any possible negative impacts on the species in the area; Mrs. J. Petruniak, Dillon Consulting, responding that that is one of the concerns that they have heard from the community, saying that if you build accessible, easy to use trails, that more people are going to use them; that part, you cannot predict the future; they are proposing no new parking, there is no parking for this Environmentally Significant Area, it is mostly used by the people in the community; will use go up, we hope so, it is a great Valley, there is going to be a lot of educational opportunities for people to go and explore and really learn about what they are looking at, will that increase use affect ecological integrity, it is her professional opinion that it will not; well-designed trails are known to keep and direct and manage the use of natural areas by people and is probably the best way for people in an urban environment, such as the City of London, to manage the use of a natural area within the urban limits; Councillor Usher asking about the \$500,000 for the annual contract with the Upper Thames River Conservation Authority (UTRCA), wondering if that will be increased or will it stay the same; Mr. A. Macpherson, Manager, Environmental and Parks Planning responding that this is an annual contract that they currently have and it is due for renewal as of January 1, 2019 so it is already built into the Operating budget for the City and they will be back to Council later this year with a report about renewing the contract with the UTRCA and it is already in the approved budget as a pre-approved expenditure, it is a five year contract; Councillor Usher asking if it is likely to increase as a result of this; Mr. A. Macpherson, Manager, Environmental and Parks Planning, responding that the budget only goes up if they add additional land area but what you find, however, and take it or leave it, hardened trails are actually easier to look after than wood chip trails, sometimes dirt trails, once they go in they are stable and firm for a long time, sometimes you would even look at the bridge that they showed you there that has a longer life span than any boardwalk that they are building, it is actually less maintenance than a lot of the lower key boardwalk infrastructure; there is not any proposed increase as a result of this Master Plan.*
- *Councillor M. van Holst wondering what would happen if either one of the proposed bridges were not included, to the trail system, what would you expect would happen to the patterns of use; Mrs. J. Petruniak, Dillon Consulting, responding that if they were to leave the system as it is, the current 5.4 kilometers of informal trails going through public property and habitats and features such as seepage areas would probably continue and would possibly even increase as the population increases or more people start to use this, if they were specifically not to put bridges in here, you would limit the amount of accessible trails that are in the Valley there would be a small loop that is accessible, currently there is an existing trail; there is evidence of people traversing the Creek, as well as D, not so much the A, so you end up with people in the Creek because people want to get from one side to the other; Councillor van Holst indicating that right now he notices that there are three loops almost being tied in the middle but they do not touch; wondering if, in the informal trails, do they expect that people are going to want to move across those or are we expecting people to take the larger loop; it looks like you can work your way around the whole trail system if you go through the subdivisions as well;*



Mrs. J. Petruniak, Dillon Consulting, responding that they felt that it was important to show this kind of neighbourhood connection; currently there is an informal trail that is going through these private properties and with the private property going right to the Creek, it is not possible to create a connection within the Environmentally Significant Area here plus they have the bigger colony of false rue anemone as well as some seepage areas and some slopes that are not safe for people to travel on; it is going to take a lot of work, that is part of the Plan, is to do an even better job of working to close these trails, not just to close them through landscape features but also to close them through signage, telling people why it is important that they not continue past this point to access here.

- Jacqueline Madden, Chair and M. Dawthorne, Member, Accessibility Advisory Committee – expressing support for the staff recommendation; believing the bridges are probably the biggest point of contention; pointing out that the two bridges connect the valley with the north, the trails to the west, the University, and adds a great deal of connectivity of an accessible pathway; an AODA compliant trail does not mean asphalt, it does not mean that plants and trees are being leveled or paved; the Accessibility Advisory Committee has never asked for this; believing this Plan works for everyone; accessibility and the environment are not in competition.
- Dr. Katrina Moser, on behalf of the Environmental and Ecological Planning Advisory Committee – see attached presentation.
- Tom Tillman, 1663 Gloucester Road, representing Gloucester Road, Green Acres and Ryersie Road – advising that this is a neighbourhood of approximately 89 properties; expressing opposition to the proposed staff recommendation; indicating that this was only brought to their attention three weeks ago as they are outside of the 200 metre circulation; stating that they have had no meaningful consultation; and requesting the removal of Access 11 and 12 from their neighbourhoods.
- Christian Therrien, Member, Environmental and Ecological Planning Advisory Committee – expressing opposition to the proposed staff recommendation; speaking to the aquatic environment at Medway Creek and species at risk; advising that the bridges A and D have been flagged for species at risk; indicating that he has observed species at risk at both locations; expressing concern that the footings would be in the flood plain and would flood in the Spring and possibly the Fall and would cause siltation which is a danger to species at risk; advising that the Conservation Master Plan does not have any aquatic habitat information.
- Roslyn Moorhead, 7 Hastings Gate – discussing the need to protect species at risk as well as other species that have the Medway Valley as their home; London is fortunate to have a niche for species that are rare.
- George Sinker, 1597 Gloucester Road – advising that trail A11 abuts their property to the west; indicating that the trail that is there now is a Level 1 trail; indicating that between 2017 and 2018 the Plan was completely changed; believing that trail A11 should remain a Level 1 trail; believing that the environment should be the first priority; this should not be ecology versus accessibility; stating that we only have on Carolinian forest in London; requesting deferral of decision until Councillors have a chance to walk the A11 trail.
- Kinan Tien, 1125 Western Road, Perth Hall, on behalf of Western's Wildlife Conservation Society – wondering how many of the over seven hundred comments that staff received were in support and how many were against this proposal; stating that the largest threat to false rue anemone is habitat destruction due to recreational activities; expressing concern if the pathways are to be asphalt; reading from the City of London Official Plan, indicating that it states that it should be retained in its natural state; indicating that this is one of the last remaining locations for false rue anemone.
- Professor Lila Kari – reading her letter included in the Planning and Environment Committee Agenda.
- Sal Pacifico, 1607 Gloucester Road – expressing opposition to the staff recommendation; advising that they do not have sidewalks or curbs on their street and the proposal would dump all the traffic coming out of the Environmentally Significant Area onto their street; advising that there is no accountability; stating that they asked for signs twenty years ago and they still do not have signs posted;

not sure how By-law Enforcement can enforce dogs off leash and the dumping of trash; we will not be able to bring the Valley back once the pathways are built.

- Lynn Schmidt, 420 Lawson Road – indicating that it comes down to valuing what we have; feeling the presence of the Natives that were here before us; stating that it is a beautiful, peaceful spot; advising of the presentations held by City staff and Carolinian Canada at the Home and Garden Show on how beneficial it is to get out in nature; advising that at all the meetings they attended they were told that there would not be any bridges, now there are two; stating that this is an Environmentally Significant Area not a park; and, indicating that nature cannot survive us if we do not treasure it.
- Holden Rhodes, 1633 Gloucester Road – expressing opposition to the staff recommendation; understanding that the two access points, A11 and A12 were inserted there and kept as municipally owned allowances to access the Valley because there was no other access from the neighbourhood to the Valley; stating that the neighbourhood does not need access as there is better access through the Elsie Perrin Estate property; indicating that Gloucester Road is twenty-three feet wide, with no sidewalks, curbs or gutters; opening a trail between A11 and A12 will allow parking on a narrow street; advising that one person received notice in their neighbourhood; indicating that no one was asked to sit on the Local Advisory Committee; asking Council to defer this due to lack of notice.
- Alison Vanstone, 74 Green Acres Drive – advising that her property is situated directly beside where the pathway is proposed to go through their backyard and connect to A12; advising that she contacted staff approximately three years ago to ask about any proposed development; noting that she found out about this plan two weeks ago, she was very upset; thinking it is important for community consultation; advising that this feels too late and not enough.
- Dale Belucci, 1586 Gloucester Road – expressing concern with the potential increased crime in their neighbourhood and surrounding neighbourhoods; advising that there is little crime in their neighbourhood because they have limited access; advising that crime is committed when there is accessibility, connectivity and attractiveness; indicating that they do not have sidewalks and lighting; indicating that they were not consulted on these issues; indicating that she is willing to share her research; requesting deferral of the process.
- Mike Landers, 141 Ridgewood Place – advising that this Committee is in a unique position and can make the right decision and save two million dollars.
- Chris Sheculski, 2025 Wallingford Avenue – agreeing that the Valley is amazingly unique; advising that the environment and trails do not have to be at odds; people stay on the trail, help when asked to bust goutweed; understanding the fear of the unknown; advising that he would like to see it extended.
- Jim Davies, 60 Longbow Road – expressing disappointment that the bridges have come up again; relating to Bridge D, there is an interesting area at the bend in the River, the area called the beach, which is a magnet for people in the summer but there is an area behind it with endangered plants; stating that if you remove Bridge D, the area is accessible.
- Dr. Bill Maddeford – believing a lot of this goes back to the guideline for an Environmentally Significant Area, that is to protect it; seeing nothing in the Plan that protects this; believing access should be given to people in the neighbourhood; advising that this Valley is narrow and deep and has a very special value to the City; expressing concern with dogs off leash; advising that he has not seen anything about monitoring; indicating that there is a significant increase in birds in the south area; thinking if this is passed, this will be done in other Environmentally Significant Areas.
- Maddie Hymowitz, 59 Longbow Road – expressing opposition to the staff recommendation; commenting on the Local Advisory Committee process as it has been adversarial and unproductive; indicating that there was not site visit scheduled for the Local Advisory Committee members; public information sessions did not include information on species at risk; expressing that she feels managed and does not like it; requesting the Plan be referred back to staff.
- Aashish Goela, 1587 Ryersie Road – indicating that the key things here are process, what process gaps may have been there; wondering why, after the Environmental and Ecological Planning Advisory Committee made comments an independent consultant was hired; changing trails A11 and A12 from Level 1 to

Level 2 may seem reasonable but the neighbourhood nearby was not engaged; wondering why the neighbourhood was not consulted; wondering how the process works as a lot of people have found out about this in the last month.

- Lisa Bildy, 1370 Corley Drive – believing this is similar to the tragedy of the Commons; stating that when people have a sense of entitlement to an area it becomes something that people can take as much as they want to from and this could become a running or cycling event as it is no longer a significant area; requesting that bridges not be built in this area; requesting that this area be kept natural as there are several parks in the city that can be used for bicycling and walking; indicating that pretty soon there will be nothing left to protect.
- Dave Potten, 110 West Rivertrace Walk – expressing support for the staff recommendation; advising that he supports recreation in the city and improving the habitat; indicating that the community has taken ownership of the northern portion of the Medway Valley Heritage Forest; providing the history of the Valley; indicating that when you close trails, people make their own; Hiking for Happiness is held for people who are disabled, not necessarily wheelchair bound, who enjoy hiking.
- Vicki Van Linden, 431 Ridgewood Crescent – expressing opposition to the staff recommendation; urging the Planning and Environment Committee to accept the concerns expressed by the Environmental and Ecological Planning Advisory Committee; believing that Environmentally Significant Areas should not be treated as parks or recreational areas; indicating that all species of wildlife are declining; asking that the wildlife be considered; asking for increased by-law enforcement in all Environmentally Significant Areas.
- Bruce Morton, Doncaster Avenue – advising that his property abuts an existing Level 2 trail that goes into the Environmentally Significant Area; observing people using the trail all times of the year; expressing concern about the protection of the Environmentally Significant Area; indicating that people dump gardening debris into the Environmentally Significant Area; contacting By-law Enforcement and they do not have the resources to deal with matters of dumping in Environmentally Significant Area; asking Council to invest in mechanisms of oversight in the interest of protecting the Environmentally Significant Area.
- Gil Warren, 16-624 William Street – expressing support for the staff recommendation; using the Kilally Environmentally Significant Area on a regular basis; pointing out that the proposed bridges are not in environmentally sensitive area; believing that the position put forward by the Planning Services area is a compromise; believing that it is time to make a decision on this matter; indicating that there has been consultation on this issue and there will never be consensus; advising that trails are temporary and there are other places that would be happy to have the bridges.
- Sandy Levin, 59 Longbow Road – see [attached](#) presentation.
- David Donnelly, Environmental Lawyer, Toronto, representing the Lower Medway Valley Rate Payers Group (LMVRG) - expressing opposition to the proposed staff recommendation; expressing concern with the traffic and species at risk; indicating that the bridges should not be built; requesting a deferral of the Planning and Environment Committee's decision so a more accommodating discussion can be had; pointing out a lack of First Nations consultation is a serious legal liability; outlining that the issue is not more access but better access; bring people to nature, do not build more bridges; building bridges is not a legal obligation of the City under the AODA.
- John Bestard, 1526 Ryersie Road – expressing opposition to the proposed staff recommendation; expressing concern about crime where currently they are backed against a river but once bridges are built they will be into Whitehills and further; expressing concern about the First Nations not being mentioned; expressing concern about adding more people to the BRT zone; advising that citizens have not had any proper knowledge or consultation.
- Jack Blocker, 367 Grosvenor Street – indicating that there are a variety of species are at risk; advising that the Medway is under severe threat from the Conservation Master Plan (CMP); pointing out that the AODA does not require the City to build a bridge where none exists; expressing opposition to the proposed staff recommendation; connecting neighbourhoods is not the job of an ESA; advising that increased through traffic will threaten sensitive species; identifying that access can be provided in nature friendly ways; stating that the bridges will invite more

foot and bicycle traffic; ESA's are not parks, if adopted they will become really nice parks; and delete the bridge building proposal.

- Charlie Shore, 6th Grade Student – advising that he loves the outdoors and the wildlife; indicating that this plan may not help the preservation of wildlife; believing that if a new path is constructed, lots of animals will leave or die during construction or because of increase of human traffic; everything needs to be considered when we disturb an area.
- Gary Brown, 35A - 59 Ridout Street South – indicating that he requires more information about the path that is being installed; putting in a bridge will protect nature from people stepping on the protected species; believing that the case for building a bridge has not been made but a case for not building a bridge has been made; pointing out that there has been no indigenous consultation; advising that they fought for no pavement in The Coves and it was done and was also made accessible; stating that, if a pathway is constructed, although not permitted, bikes will use this.
- Rene Agathos – advising that she has lived in the Sunningdale area for 18 years and has been asking questions since 2011 about the trails in the area; indicating that she was advised in 2011 that when the sewer trunk was put through or around the Medway Valley so would a multi-use pathway system; pointing out that there are lots of trails in the City but nothing is connected; indicating that people are staying on the trails and causing less damage in the trails in her area; outlining that wildlife and plant life has adapted and flourished; believing they need to come to some sort of a compromise; pointing out that damage has already been done; and the City has done their due diligence in the consulting process.
- Gary Smith, 141 Meadowlily Road South – indicating that these decisions do establish a precedent; advising that green space needs to be protected and appreciated; pointing out that he is not sure how hard paths improve the green quality; asking that Council give consideration to “less is more”; leaving our natural areas alone is a wise philosophy.
- Mike Blewett, 73 Green Acres Drive – advising that he was not notified about the public participation meeting and does not read The Londoner; expressing opposition to the proposed staff recommendation; indicating that the City is trying to put a square peg into a round hole; indicating that if the area is developed then the wildlife will disappear.
- Sarah Jones – advising that, first we must address the issue of safety; expressing concern with increased traffic; pointing out that these are fast flowing waters; expressing concern about people jumping from the bridge into fast flowing water and children drowning; expressing concern about the increased amount of unsupervised young people; expressing concern about drugs and alcohol being used in the area; asking people to consider the risk Council is taking by allowing increased traffic.
- Janet Peters, 2048 Valleyrun Boulevard – advising that she is a hiker, nature lover, adventurer and gardener; indicating that she currently uses the local trails such as Fanshawe, Elgin, and Thames Valley; looking for the continuity for a natural route through the valley floor; stating that the valley's and creeks are not private lands; indicating that she does not want to walk along the property line which is close to people's homes; believing that the City should be enhancing London's trail system.
- John Levstik, 206 St. Bees Close – advising that he served on the Local Advisory Committee that helped put this together; indicating that there are ways to protect the environment and have greater access; believing that enhanced trails and bridges may help lessen the impact on the deterioration of the park.
- Bernie VanDenBelt, 9987 Longwoods Road, President of Nature London – advising that the proposals to create more pathways and bridges has more to do with recreational than conservation; indicating that it is hard to see how more bridges and greater trails will help conservation and the plants of Medway; stating that if you want to preserve habitat you need to delete the bridges from the Master Plan; believing the needs of native and flora fauna should be coming first; pointing out that species are at risk of being trampled on; indicating that Nature London requests that the plan be sent back to staff for revision including the deletion of proposed bridges.

- Judy Ponti-Scargi, Valleyrun Boulevard – advising that she would like to photograph the Medway Valley pre-implementation and post-implementation and offering her services to photograph the Medway Valley.
- K. Zarebecki 205 - 240 Villagewalk Boulevard Unit, representing the Sunningdale Ratepayers Association – advising that he served on the Local Advisory Committee (LAC); advising that the experience at the LAC was much what you have felt and seen tonight; looking at a map of the north section, you would see a continuous path from the north to the south with a couple connection points; pointing out that the utility overlay that the pathway runs over is maybe four or five percent at the most of the whole valley and the pathway system is maybe about three percent of the whole valley system so we have not turned this into a park; advising that Council has made major decisions around pathways up in the north and connection to the Thames Valley Pathway system, he thinks you can do that at here and you'll complete that section of the pathway.
- Mohamed Moussa, 155 Thornton Avenue - requesting that the Plan not be approved in this fashion; expressing agreement with former Councillor Levin and Mr. Donnelly's submissions; adding that crafters of AODA have included exceptions; advising that his property adjoins pathway and in his experience, signage does nothing to keep people on the trail and dogs on-leash without expensive proper enforcement; further stating that bridges and connectivity are not needed.
- Tammy Hogan, 1540 Gloucester - advising that she walks the pathway every day and cannot figure out how a bridge could be built without severe impact to environment and animals.
- Maria Howshell, 1526 Ryersie Road - raising a question about A13 path beside Elsie Perrin; wondering why work has already begun, clear cutting large trees that canopied the path.



**Medway Valley Heritage Forest ESA (South)  
Conservation Master Plan  
Planning and Environment Committee**

**April 16, 2018**




**Location Map**



Medway Valley Heritage Forest ESA (south)




**Conservation Master Plan (CMP) – Council’s Strategic Plan**

The Medway ESA CMP is one of Council’s Strategic Priorities under:  
**“Building a Sustainable City – Strong and Healthy Environment”**





And linked to:  
**“Strengthening our Community – Healthy and safe and accessible city”**





**London’s Official Plan - Key Directions  
Policy 58 - 4**

**“Protect and Enhance the health of our Natural Heritage System”**

**London’s Official Plan -Key Directions  
Policy 62 - 11**

**“Ensure that all the planning we do is in accordance with the Accessibility for Ontarians with Disabilities Act, so that all of the elements of our city are accessible for everyone.”**

**London’s Official Plan - Policy 1304**

**Why is Natural Heritage Important to Our Future?  
 ...natural heritage features and areas that form the Natural Heritage System, shall be protected and managed**

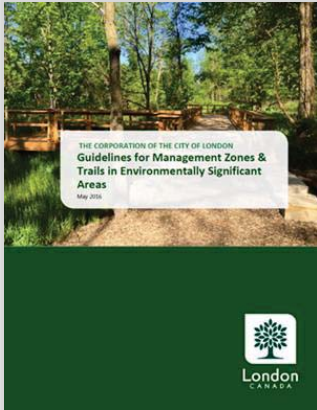
to improve their ecological integrity

and

to provide opportunities for public use where appropriate.




## Guidelines



## BACKGROUND

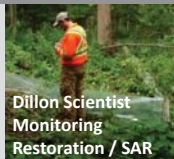
### CONSERVATION MASTER PLAN PROCESS 2013-2018

- PHASE 1:** Community Engagement and Participation ✓  
 Life Science Inventory and Evaluation ✓  
 Boundary Delineation ✓  
 Application of Management Zones & Review of Existing Trails ✓  
 Identifying Management Issues\* ✓
- PHASE 2:** Community Engagement and Participation ✓  
 Goals, Objectives, Recommendations ✓  
 Ecological Protection, Enhancement & Restoration ✓  
 Trail Planning & Design Process ✓  
 Priorities for Implementation ✓  
**Final Conservation Master Plan** ✓

\*2014 Ecological Restoration began to protect False Rue-anemone, SAR etc.

## Environmental Management Strategy: Restoration

- ✓ More than 50% of Restoration work is completed and or in process and monitored, all Top/High Priority areas to protect SAR implemented and monitored 2014-2018.
- ✓ CMP includes restoration & monitoring for all informal trails.
- ✓ City / ESA Team successfully coordinated majority of restoration in **less than 4 years**, remainder will be addressed.
- ✓ City / Dillon & UTRCA recognized for innovative work, SAR habitat protection, contributions to [Federal Recovery Strategy for the False Rue-anemone \(\*Enemion biternatum\*\) in Canada](#)
- ✓ City recognized with **Ontario Nature Award 2016** for leadership, exceptional ESA habitat protection
- ✓ City recognized with **Service to the Environment Award 2017** for Guidelines for Management Zones and Trails in ESAs
- ✓ Ontario Invasive Plant Council identifies **City of London** as a **provincial leader in Invasive Species Management**



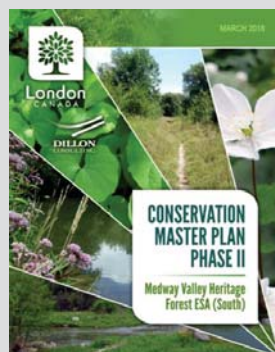
## Accessibility for Ontarians with Disabilities Act (AODA)

AS OF JANUARY 1, 2016

**Newly constructed or redeveloped recreational trails that the City intends to maintain shall meet the accessibility standards**

## Conservation Master Plan – Key Issues

- Environmental Protection
- False Rue-Anemone
- Increased Use
- Accessibility for Ontarians with Disabilities Act (AODA)
- Details of the Trail System



## Guidelines for Management Zones and Trails in ESAs

Guidelines Approved by Council May 2016:

- Endorsed by Trails Focus Group which included members of the Medway ESA CMP Local Advisory Committee (LAC):
  - EEPAC, ACCAC, Nature London, UTRCA;
  - Adopt an ESA Groups: Friends of Medway Creek; and, Orchard Park/ Sherwood Forest Ratepayers.
- City of London received external recognition for the Guidelines from the City of Toronto, and, an [Award for Service to the Environment](#) by the Ontario Association of Landscape Architects
- Guidelines based on the latest science to ensure protection of ESA ecosystems & meet AODA req.



Medway ESA CMP Complies with and follows process in Council approved Guidelines

## 5 Guiding Principles of Conservation Master Plan – Guidelines for Management Zones and Trails in ESAs

- ✓ **Natural features and ecological functions** for which the ESA has been identified shall be protected.
- ✓ **The ecological integrity and ecosystem health of the ESA shall have priority in any use or design related decision.**
- ✓ **A properly designed and implemented trail system appropriate to specific management zones** and reflecting sensitivity of the natural features will be implemented to achieve the primary objective of protection and the secondary objective of providing suitable recreational and educational opportunities.
- ✓ **The community will be engaged** in natural areas protection and the trail planning process to build awareness, foster education, and encourage participation in order to increase the capacity for creating a conservation culture that promotes natural areas as a common good and conservation as a collective responsibility.
- ✓ **Enjoyable, safe, accessible trails** for recreation appropriate in an ESA and learning environment **will be permitted in accordance with** any/all recognized **accessibility legislation such as the Accessibility for Ontarians with Disabilities Act, (AODA)**, best practices and the above principles.



## Management Zones

### Nature Reserve (NR) Management Zone

- **Level 1 trails** (e.g. dirt, wood chips, stepping stones) and structures (e.g. boardwalks, bridges, stairways) may be permitted in NR Zones to reduce impacts to significant ecological features and increase the sustainability of the trail system in the ESA. **These are areas where exceptions to making trails accessible would apply** as such activities may have a negative effect on water, fish, wildlife, plants, invertebrates, species at risk, ecological integrity or natural heritage values.



Medway ESA  
CMP Complies  
with Council  
approved  
Guidelines

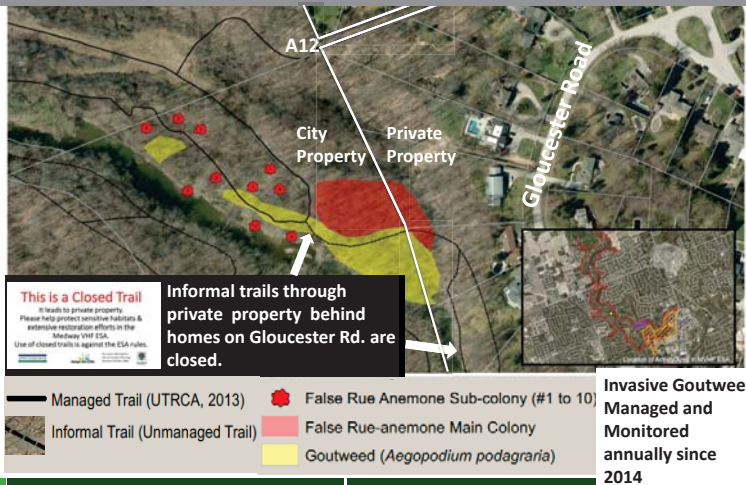
### Natural Environment (NE) Management Zone

- **Level 1 and Level 2 trails** may be located in NE Zones where it can be demonstrated that the trail will not result in negative impact to the adjacent ecological features and functions of the ESA. Trails that comply with the Guidelines in NE zones can/must be made accessible as per AODA. *Especially* when Utility Overlay for existing sewers are present.

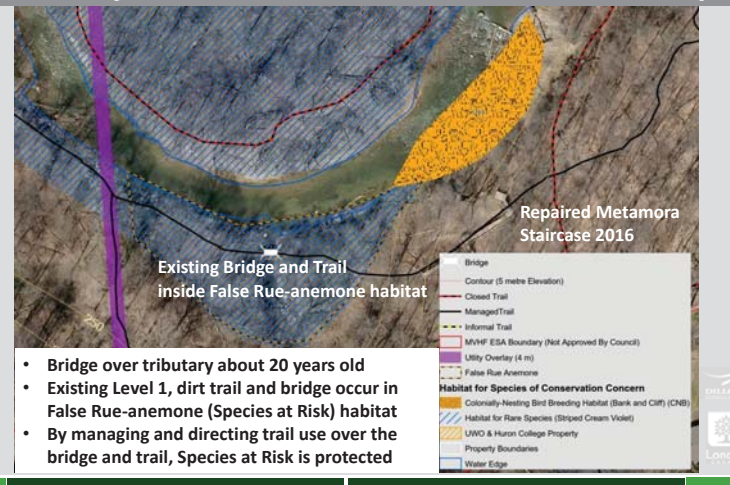
CMP and Sustainable Trail Plan complies with AODA & Guidelines



## Protection of False Rue-anemone



## Existing Bridge and Trail near Metamora Cres. Access 17 Currently Protects False Rue-anemone Habitat in Medway S.





## Ecologist Review Supporting CMP for Protection of SAR

The Ecologist who authored the initial draft of the [Recovery Strategy for the False Rue-anemone \(\*Emion biternatum\*\) in Canada, 2017](#) reviewed the CMP (letter in Appendix D of staff report in PEC agenda) and confirms:

- “I have reviewed relevant sections and plans within the CMP and I believe it is consistent with the actions proposed in the recovery strategy for this federally Threatened plant species.”
- “In my opinion, the Medway ESA CMP and supporting work by the City of London will help to protect and restore the False Rue-anemone population within this densely populated urban area.”

Ecologist, Holly Bickerton who authored the review of the CMP is a current member of the:

- [Committee on the Status of Species at Risk in Ontario \(COSSARO\)](#)
- [Field Botanists of Ontario](#), and, [Ontario Invasive Plant Council](#)



## Trail Planning for CMP and AODA in Guidelines

### Section 2.1 and 2.3: Policy for Trail Planning and Design

- Enjoyable, safe, accessible trails for recreation appropriate in an ESA learning environment will be permitted in accordance with recognized accessibility legislation (such as the Accessibility for Ontarians with Disabilities Act, 2005 (AODA), best practices and the above principles).
- Trails to permit access for persons with disabilities, consistent with these guiding principles and AODA requirements, will be provided where this can be achieved while protecting the ecological integrity and ecosystem health of the ESA.

### Section 5.5.2: Utility Overlay

- Where maintenance access is required, trails should be located along the same route to minimize impacts to the surrounding ESA while achieving a social benefit by designing the trails to accommodate persons with disabilities wherever possible.

### Section 7.1: Design and Construction - Trails

- Design and Maintenance Standards: Where the trail is deemed accessible, the trail in its entirety shall meet AODA recreational trail surface requirements for both firmness and stability.



Medway ESA  
CMP Complies  
with Council  
approved  
Guidelines



## 5 Year Community Engagement Process 2013-2018

- Council launched Ph. 2 Medway CMP Feb/17
- Met with EEPAC 7 times
- Met with ACCAC 5 times
- Letters to all homes (1860) within 200m of entire Medway ESA sent 3 times in 2017 (exceeded std. 120 meter notification limit)
- 7 Notices in Londoner 2013-2018
- Met with 18 member, Local Advisory Committee (LAC) 6 times, Minutes in CMP
- Online CMP Survey June 2017 – “Ideas, Issues, Opportunities, and Observations”
- 4 Open Houses (Phase 1 & 2 in 2013-2017)
- Presentation to OPSF Ratepayers 2017 AGM
- 767 comments 2017-2018
- Process paused 2015-2016 to update Council approved Guidelines for MZs and Trails, 2016



Open House #1 - June 1, 2017



Open House #2 - Nov. 15, 2017



## Summary of Community Feedback 2017-2018

### General Agreement on these parts of CMP:

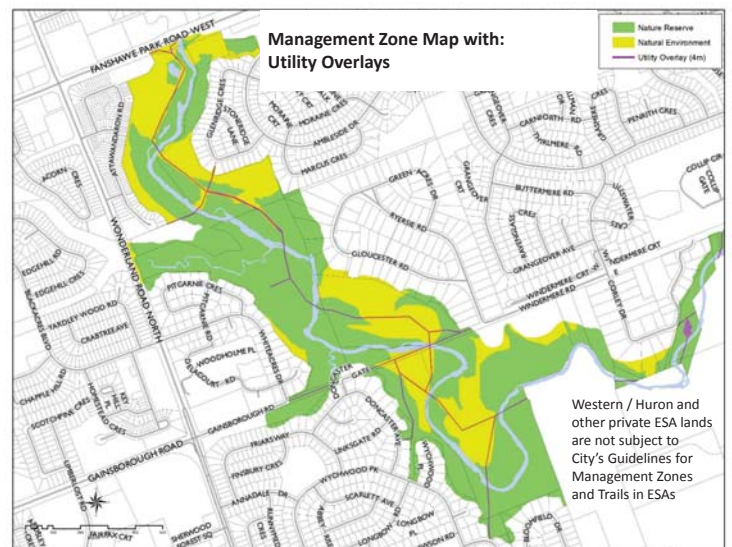
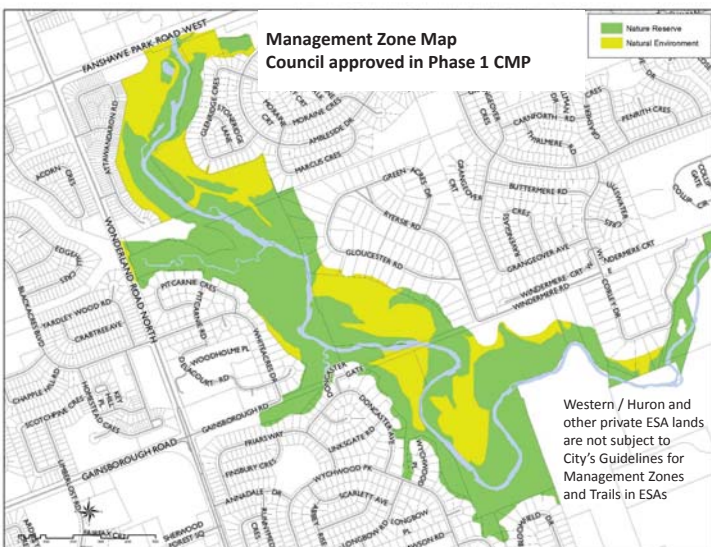
- The ESA is a unique feature; protecting and restoring/maintaining ecological integrity is the first priority and goal of CMP
- Continue successful work on invasive species removal, restoration and naturalization as per CMP
- Increase enforcement of by-laws and ESA rules
- Improvements of trails over muddy, icy, wet areas of trail system
- Monitoring - continue and enhance as per CMP

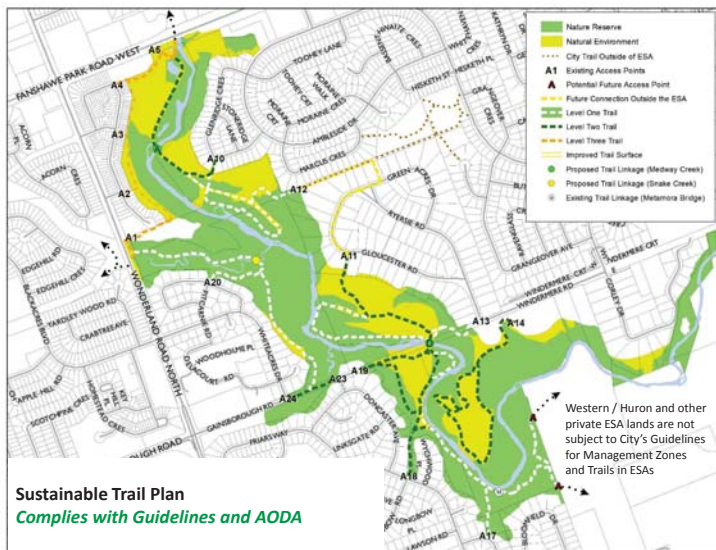
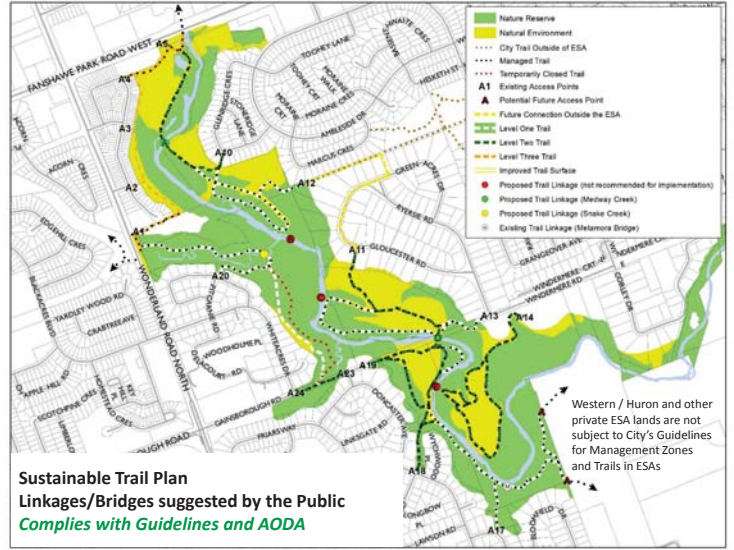
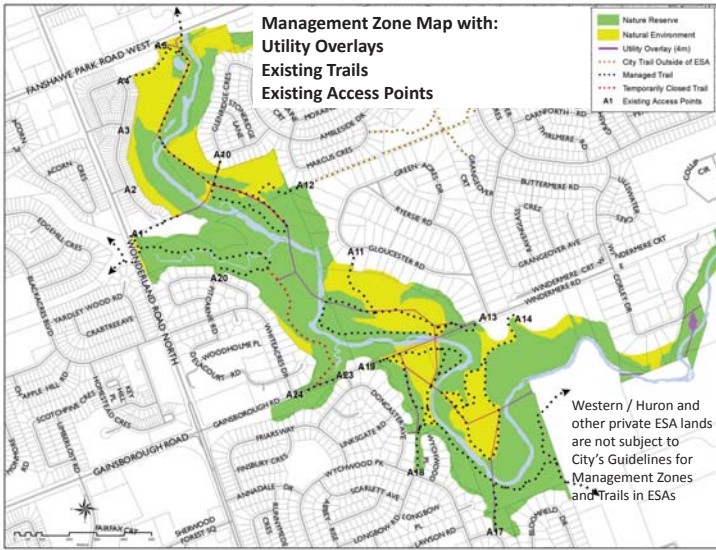
### Varied Opinions on these parts of CMP:

- Amount of Connectivity of trails in the ESA (i.e. linkages, bridges, and connections outside the ESA etc. suggested by the public)
- Hardening of trails to provide inclusive access to nature consistent with the Guidelines to comply with AODA requirements and for protection of ESA ecosystems
- CMP complies with Council's Guidelines for MZ and Trail in ESAs (for protection of ESA ecosystems and inclusive trail use to meet AODA requirements)



Medway ESA  
CMP Complies  
with Council  
approved  
Guidelines





### Trail Types

- Level 1 Trail
- Level 2 Trails (Accessible):

Existing Sewer Manhole

"Dirt" surface, up to 1 meter wide (about 3 feet wide)

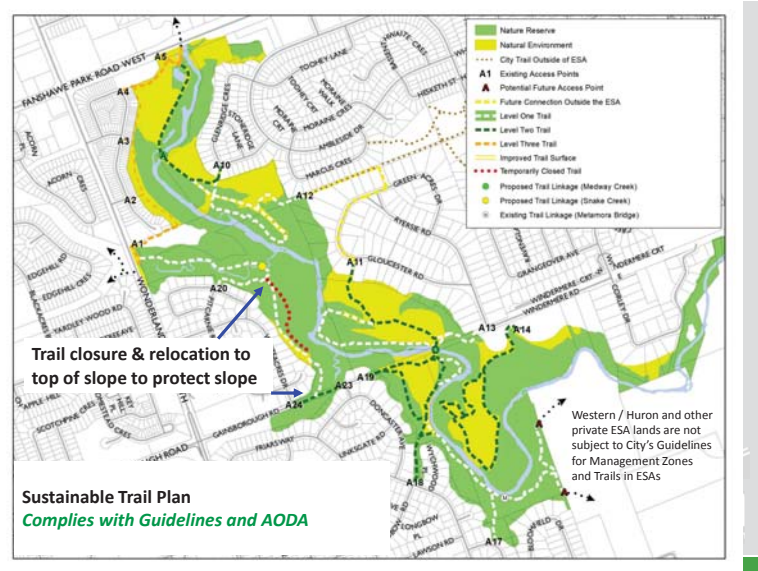
Granular surface up to 2 meters wide / (about 6 feet wide)

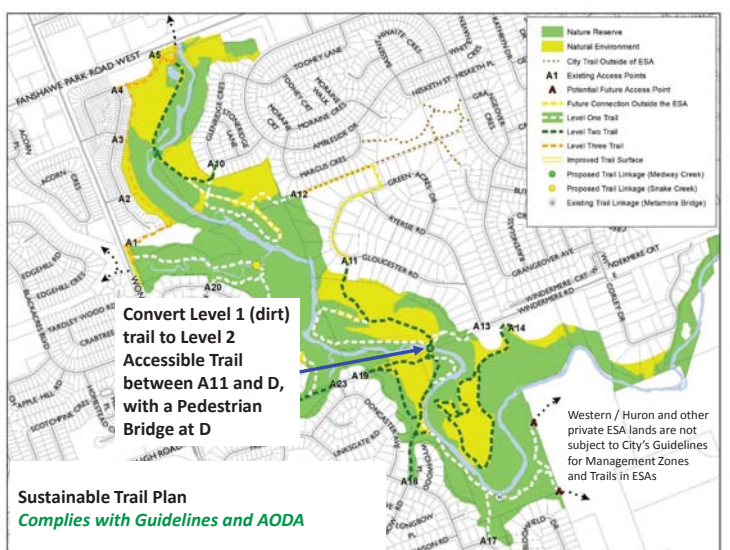
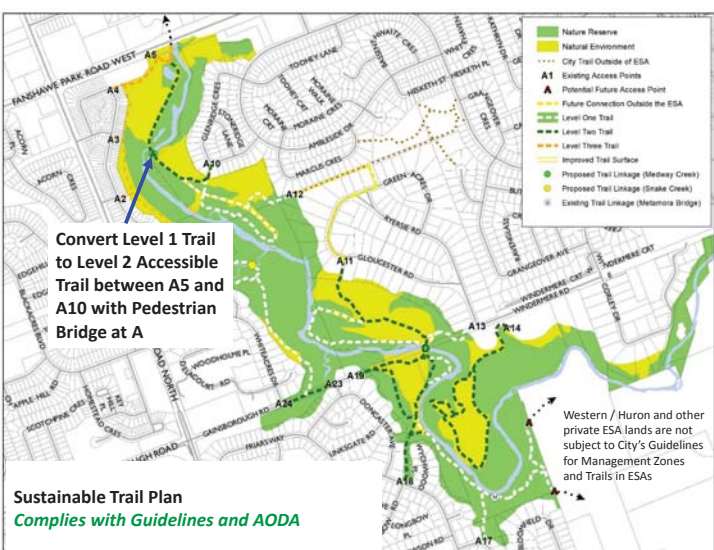
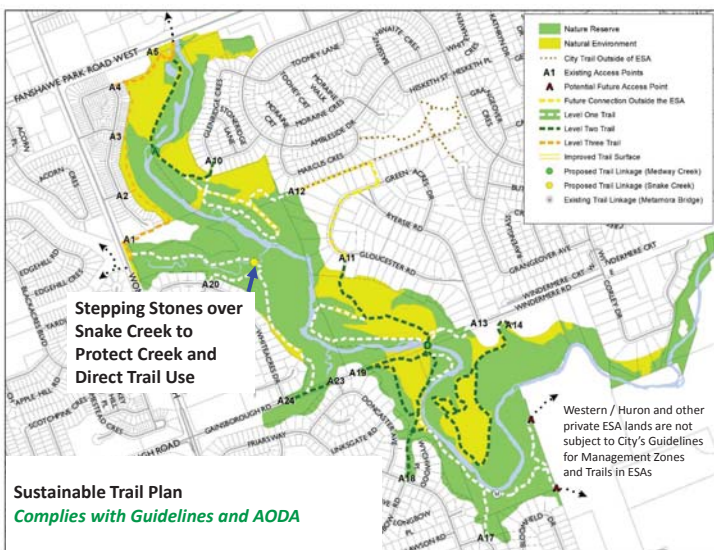
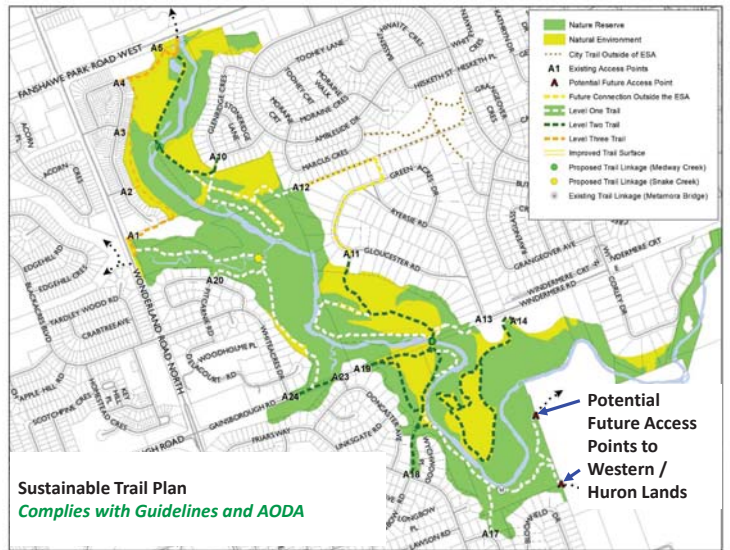
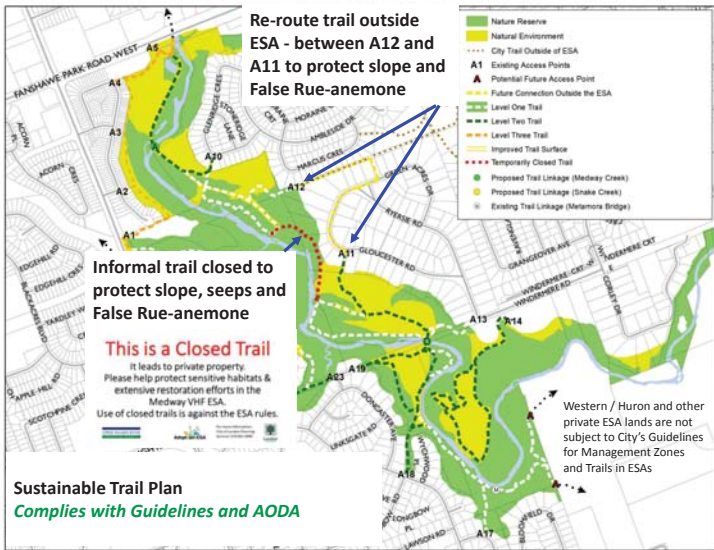
Asphalt surface up to 2 meters wide (about 6 feet wide)

### What might an Accessible Linkage at look like at A and D?

- Pedestrian Bridge south of Sunningdale Road West in MVHF ESA
- Fully Spans Creek, Protects riparian shoreline

**London**





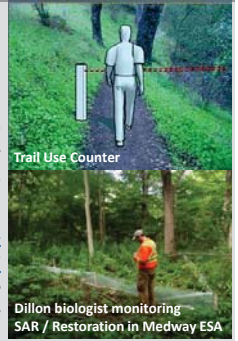
## Continued Adaptive Management and Monitoring

- ✓ Most thorough monitoring program of any ESA in the City is already in place, registered with the Province & recognition from the Federal Government for best practices.
- ✓ Annual invasive species control / SAR monitoring reports, outlining positive active management are circulated to EEPAC, and Ministry of Natural Resources & Forestry (MNRF), are listed in the CMP.
- ✓ Table 12 Monitoring Framework in CMP to continue to track:
  - Bank migration
  - Trail condition
  - Trail usage / linkages over Medway Creek
  - Sensitive species, Invasive species
  - Wildlife & wildlife habitat
  - Encroachment, Non-permitted uses
  - Restoration and naturalization



## Continued Adaptive Management Monitoring: Monitoring Measures of Success

- Monitoring and adaptive management after trail improvements, bridge installation, naturalization and restoration work - described in Table 12 of CMP.
- Trail use in sensitive areas *may decrease* after closure of informal trails and drier, firm and stable Accessible trails are provided in less sensitive areas over sewer alignments, and, linkages are provided outside the ESA.
- Either way the Recovery Strategy for the False Rue-anemone (*Enemion biternatum*) in Canada, 2017 identifies in Table 5 that; “Activities restricted to the surface of existing, authorized... recreational trails would not result in the destruction of critical habitat.”
- If use of trails goes up, natural surveillance goes up, and Crime Prevention Through Environmental Design (CPTED) principles show *increased* compliance with rules and ESA protection



## ONGOING PROTECTION OF SENSITIVE FEATURES LEVEL 1 TRAIL LOOP SOUTH of A10 and WEST of A12

- ✓ Barricade / Corral at transition from Level 2 to Level 1 Trail Type as per Guidelines
- ✓ Educational / Regulatory Signage on Corral:
  - How to protect Sig. Features
  - Why Stay on Trail / Dog on Leash
  - Use at Own Risk / Not AODA compliant
- ✓ Same signage/species Metamora A17, A18
- ✓ Level 1 Trail Loop use *may go down*
- No access to Level 1 Loop from A11 & A13
- Level 2 trail will draw people north to drier, accessible, longer trail
- ✓ If use goes up, rule compliance goes up (CPTED)
- ✓ Use / sensitive species continue to be monitored
- ✓ Biggest threat inv. species has been addressed

**Entrance corral at transition from Level 2 → Level 1 trail - AODA info & interpretative signage**

## ADAPTIVE MANAGEMENT

**Adaptive Management Could Include:**

- Seasonal Trail Closure of for 6-8 weeks in spring while False Rue-anemone is growing
- OR
- Permanent Closure of all trails near/in False Rue-anemone habitats including:
  - Level 1 Trail South of A12
  - Level 1 Trail North of A17, East of A15 / A16

**This is a Closed Trail**

Please help protect sensitive habitats & extensive restoration efforts in the Medway VHF ESA. Use of closed trails is against the ESA rules.

## Implementation of CMP: Budget

Assumed maximum budget based on Estimated Cost table in CMP (Table 4) is \$2,100,000 over ten years

- This accounts for >50% of recommended restoration underway and/or complete
- Based on previous construction costs, each proposed bridge is estimated to fall within a range of \$400,000 – \$500,000 to construct.
- AODA Trail improvements assumed to not exceed \$280/m (2,750 m assumed)

CMP Action	Maximum Estimated Cost
Restoration	\$200,000 remaining (approx. 50% already carried out)
Naturalization	\$120,000
Sustainable Trail Concept Actions	\$1,680,000
Monitoring	Operating Budget and \$100,000 Capital
<b>TOTAL</b>	<b>\$2,100,000</b>



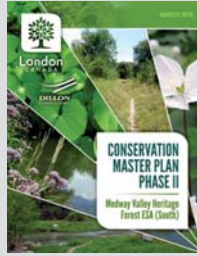
## SUMMARY – Conservation Master Plan

- Satisfies Council’s Strategic Plan
- Follows London Plan Policies
- Complies with Council’s Guidelines for Management Zones and Trails in ESAs
- Addresses AODA regulations and Consultation with Accessibility Advisory Committee

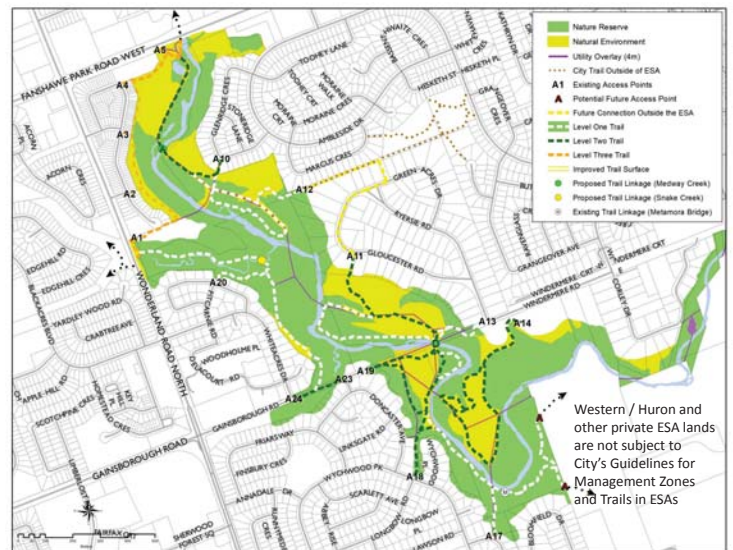
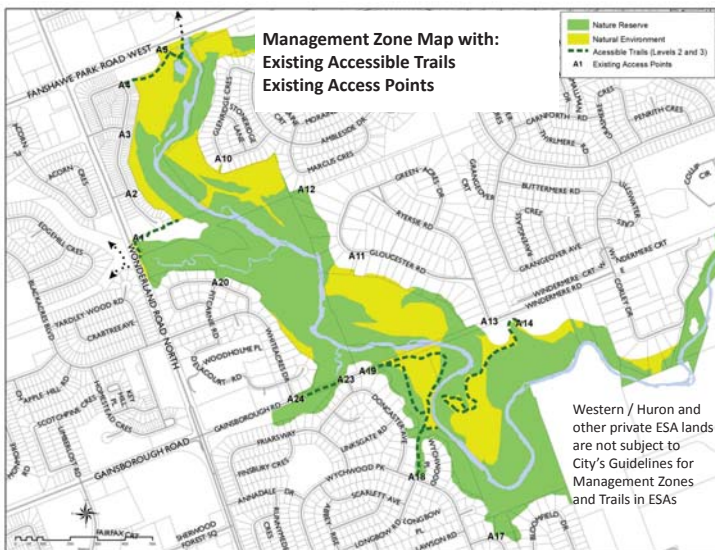


## SUMMARY - Conservation Master Plan

- Ecological Features and Functions Protected
- Increased Use Can be Managed
- False Rue-anemone Protected, Enhanced and Continues to be Monitored
- Accessible Trails Provided Outside Ecologically Sensitive Areas / Over Sewer Alignments



## END



## END of SLIDES



## London Plan

- Policy 1422\_3 London Plan** "The identification of **management zones based on ecological sensitivity**, including descriptions of recreational uses and opportunities for eco-tourism to be provided if applicable, and details of access permitted to and within the area, including formalized pathways and **trail systems**."
- The CMP process is the "trigger" for Accessibility for Ontarians with Disability Act (**AODA**) compliance requirements for the **trail system** including the **requirement** for consultation with the Accessibility Advisory Committee of Council

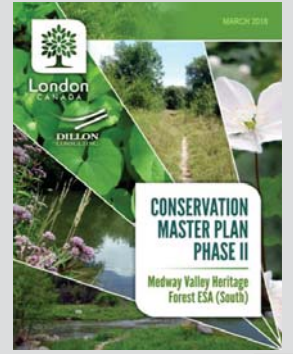
## Accessibility for Ontarians with Disabilities Act (AODA)

- **By law, you must make recreational trails accessible** if you are building new public recreational trails and planning to maintain them or making major changes to existing ones and planning to maintain them
- **Exceptions:**
  - Exceptions where making the trail accessible would have a **significant** negative effect on water, fish, wildlife, plants, invertebrates, species at risk, ecological integrity or natural heritage values
  - In such instances, **the City is expected to meet the requirements of the Standard to the greatest extent possible.**
- **Must Consult with Accessibility Advisory Committee**
- **Accessibility Advisory Committee has ENDORSED the Conservation Master Plan, March 2018**



## Conservation Master Plan – Key Issues

- Environmental Protection
- False Rue-Anenome
- Increased Use
- Accessibility for Ontarians with Disabilities Act (AODA)



**Medway VHF ESA CMP PEC Backup Slides**

April 16 2018

## Firm and Stable Trails Under AODA

Surface Material	Level of Accessibility
Concrete Pavers on Concrete	<p>Accessible</p> <p>Moderately Accessible</p> <p>Least Accessible</p>
Asphalt Crushed Stone Wood Decking	
Soil Cement Untreated Soil	
Wood Chips	
Packed Gravel	

## Accessibility of Trails in London's ESAs – 2017 - Current

Name of ESA	Total Kilometers Managed Trails in each ESA	Kilometers Hiking Trails (Level 1) in ESA	Kilometers of Accessible Trails (Level 2 or 3 or AODA structure) in ESA	Percentage of Accessible Trails in each ESA
Coves	6.4	3.2	3.2	50%
Kains Woods	5.8	5.1	0.7	12%
Kilally Meadows	10.3	5.6	4.7	46%
Lower Dingman	1.4	1.4	0.0	0%
Meadowlily Woods	4.6	4.6	0.0	0%
Medway	11.0	5.9	5.1	46%
Sifton Bog	2.7	2.1	0.6	22%
Warbler Woods	3.9	3.5	0.4	10%
Westminster Ponds	11.4	9.8	1.6	14%
<b>TOTAL ALL ESAS</b>	<b>57.5</b>	<b>41.2</b>	<b>16.3</b>	<b>28%</b>



April 11, 2018

A. Macpherson  
Manager - Environmental & Parks Planning

I hereby certify that the Municipal Council, at its meeting held on April 10, 2018 resolved:

That the following actions be taken with respect to the 3rd Report of the Accessibility Advisory Committee, from its meeting held on March 22, 2018:

- the Conservation Master Plan for the Medway Valley Heritage Forest ESA (South) BE ENDORSED by the Accessibility Advisory Committee; it being noted that the Meeting Minutes from the ESA CMP Planning Process and the AODA Information Meeting held on February 21, 2018, as well as the attached presentation from L. McDougall, Ecologist, were received;
- the implementation of Option 1, as outlined in the attached presentation from J. Michaud, Landscape Architect, for the proposed playground at the South West Community Centre, BE SUPPORTED by the Accessibility Advisory Committee;
- the attached 2018 Work Plan for the Accessibility Advisory Committee BE APPROVED;
- J. Madden BE APPOINTED as Interim Chair of the Built Environment Sub-Committee and P. Moore BE APPOINTED as Chair of the Transportation Sub-Committee; it being noted that both the Built Environment Sub-Committee and the Transportation Sub-Committee will meet the second Tuesday of each month, and;
- clauses 1.1, 3.1, 3.2, 3.3, 3.4 and 5.2 BE RECEIVED. (4.37/CPSC)

C. Saunders



## Maintenance of Utilities within the ESA



- London Hydro is currently repairing two hydro poles that span across Medway Creek from Doncaster Gate to Windermere Road
- This is part of routine maintenance of a utility right-of-way
- Work will include the need to trim and/or cut trees to allow access for machinery and trucks to do this repair work



## Overview of Revisions to Final CMP - Trail Strategy

- Changes were triggered based on the formal response received from ACCAC on January 8, 2018. All changes comply with the Guidelines.
- In order to endorse the MVHF ESA (south) CMP, ACCAC requires the following revisions:
  - Upgrade the trail to Level 2 between A11 to the Medway creek at Linkage "D", noting the current trail runs primarily along a utility overlay within a Natural Environment zone.
  - Install a bridge at Linkage "D". This will create an accessible trail from A11 to A18 and A19.
  - Extension of the boardwalk at A18 noting erosion exists, resulting in muddy surfacing and trail-widening (by those attempting to avoid the mud). This trail improvement will maintain the trail as a Level 2 accessible trail.

Note: ACCAC originally requested A13 to Linkage D to be accessible, but as this is within a Nature Reserve zone, an accessible Level 2 trail would not be in accordance with the Guidelines. This demonstrates an "environment first" approach.



## Trail Management - Access and Wayfinding

- Signage in ESAs as described in Guidelines are:**
- Informational / Regulatory / Warning
  - Interpretive
  - Designation / Directional
  - Access Point Signs: ESA name, pictographs for rules, QR codes - Brochure / Observation Reports, and, use at own risk. Complete rules / by-law sign on the back.

**New AODA compliant signage at all access points to include a map and identify:**

- The length of trail
- The type of surface of which the trail is constructed
- The average and minimum trail width
- The average and maximum running and cross slope
- The location of amenities, where provided



Current ESA Access Point Signage

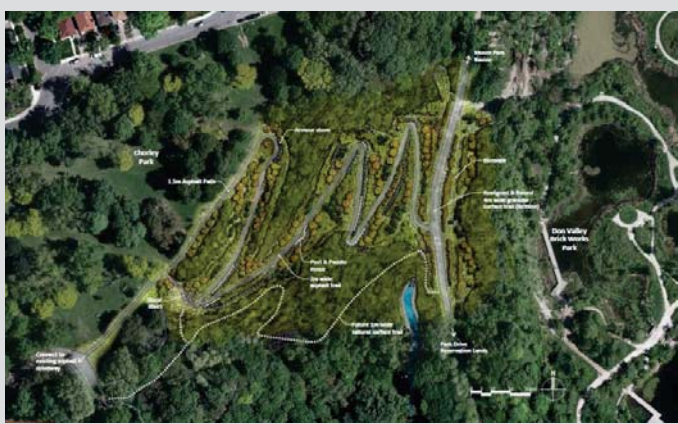


## Examples of Implementing AODA from the City of Toronto Chorley Park

- Existing footpaths, asphalt trail and timber staircase at Chorley Park are not safe for public use and will be removed and converted to a natural forest condition
- To provide safe access into and out of Moore Park Ravine, the City of Toronto developed a plan for two trail connections at Chorley Park:
  - A natural surface footpath for hiking in the forested area
  - An asphalt switchback with a gradual slope to provide access for trail users with differing abilities.
- City of Toronto changed original design to adhere to provincial guidelines. "Supporting Human Rights means providing all citizens with equal and universal infrastructure whenever possible"
- City of Toronto recognizes trails are one tool used to protect ravines and other natural environments. A trail can be planned and managed as a means to help protect and enhance a natural area.
- 160 trees required removal for the project; many were <20 cm dbh, non-native species and/or where susceptible to disease (Elm, Ash). 1500 native trees and shrubs are planned as part of the restoration planting of the site.



## Chorley Park Trails, City of Toronto



## Additional City Policies Taken Into Consideration

- The Age Friendly London Action Plan (2017-2020)**
- Includes recommendations to increase the age friendliness of trails
  - Neighbourhood profiles for Medway and Masonville areas indicate age demographics of 65+ are increasing while younger age groups are on the decline
    - Masonville 2006-2011
      - 28% increase in 65+
    - Medway 2006-2011
      - 10% increase in 65+



- London Strengthening Neighbourhoods Strategy (2017-2020)**
- Provides recommendations and strategies to empower and create sustainable, safe and active communities while also encouraging diversity and inclusiveness



## BRIDGE BACK UP SLIDES



## Response to EEPAC Concerns Bridges over Medway Creek

- Design criteria for bridges:
  - Span the creek and minimize footprint in riparian zone (i.e., no in-water work).
    - Minimize the footprint of the bridge structure approach embankments
  - Allow relief flow generated by the Regulatory 1:250-year event to go around the bridge within the wider floodplain
- Pedestrian bridge structures would be designed and constructed / load rated for pedestrians.



Bridge and Accessible Trail follow existing sewer alignment



Existing Bridge over Medway Creek (north)



## Riparian Zone Undisturbed – No in water work



## Straw Bales and Heavy Duty Sediment and Erosion Fence



## Limit of Disturbance – Minimized



## Linkage A

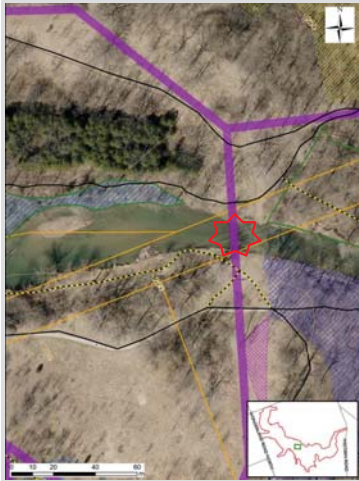


- Linkage A is a Priority:
- ✓ Suggested by the Public
  - ✓ Would connect two existing managed trails
  - ✓ Natural Env. Zone supports Level 2 accessible trails
  - ✓ Current impacts from lack of linkage – informal crossings and trails
  - ✓ No connection may result in further use of the informal trail to the east (closed managed trail) and in Creek crossings
  - ✓ Outside of mapped Significant Ecological Features
  - ✓ Complies with Guidelines
  - ✓ Over Utility Overlay - Minimize Impact & Enhance Accessibility





## Potential Crossing D



### Considerations

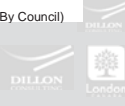
- Would connect two existing managed trails
- Outside of mapped Significant Ecological Features
- Complies with Guidelines

### Trails

- Closed Trail
- Managed Trail
- Informal Trail
- Contour (5 metre Elevation)
- Kentucky Coffee-tree

### Habitat for Species of Conservation Concern

- Habitat for Rare Species (Slender Satin Grass)
- Seeps and Springs Area (S1-S7)
- Habitat for Rare Species (Striped Cream Violet)
- Habitat for Rare Species (American Gromwell)
- Habitat for Special Concern Species (Green Dragon)
- Utility Overlay (4 m)
- MVHF ESA Boundary (Not Approved By Council)



## Potential Crossing E



### Considerations

- Would connect two existing managed trails
- Would require passing through known SCC habitat
- Would not comply with Guidelines as would directly impact Species of Conservation Concern with bridge location along any point of east creek bank.

### Trails

- Closed Trail
- Managed Trail
- Informal Trail
- Contour (5 metre Elevation)
- Butternut
- Kentucky Coffee-tree

### Habitat for Species of Conservation Concern

- Habitat for Rare Species (Slender Satin Grass)
- Habitat for Rare Species (Striped Cream Violet)
- Habitat for Rare Species (American Gromwell)
- Utility Overlay (4 m)
- MVHF ESA Boundary (Not Approved By Council)



## Potential Crossing B



### Considerations

- Would require converting informal trails to managed trails
- Would require passing through known SAR and SCC habitat
- Would not comply with Guidelines as would directly impact Species at Risk with bridge location along any point of creek bank in this location

### Trails

- Closed Trail
- Managed Trail
- Informal Trail
- Contour (5 metre Elevation)
- False Rue Anemone

### Habitat for Species of Conservation Concern

- Habitat for Rare Species (Striped Cream Violet)
- Habitat for Rare Species (American Gromwell)
- Utility Overlay (4 m)
- MVHF ESA Boundary (Not Approved By Council)



## Potential Crossing C



### Considerations

- Would require passing through SAR/SCC habitat
- Would require new trail on west side and/or conversion of informal to managed trail
- Would not comply with Guidelines as would directly impact Species at Risk with bridge location along any point of west creek bank.

### Trails

- Closed Trail
- Managed Trail
- Informal Trail
- Contour (5 metre Elevation)
- False Rue Anemone

### Habitat for Species of Conservation Concern

- Seeps and Springs Area (S1-S7)
- Habitat for Rare Species (Striped Cream Violet)
- Habitat for Rare Species (American Gromwell)
- Habitat for Special Concern Species (Green Dragon)
- Utility Overlay (4 m)
- MVHF ESA Boundary (Not Approved By Council)



## Environmental Management Strategy: Trail Management Plan



Metapora Bridge - before



Metapora Bridge - after

City required by law to meet AODA standards where possible:

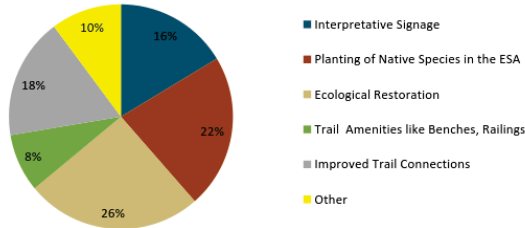
- Linkage A & D (Bridge) recommended :
  - Area low in sensitive ecological features
  - Would provide increased accessibility, keeping accessible trail and linkage in disturbed area with ongoing access req. (Utility Overlay).
  - Supported by ACCAC



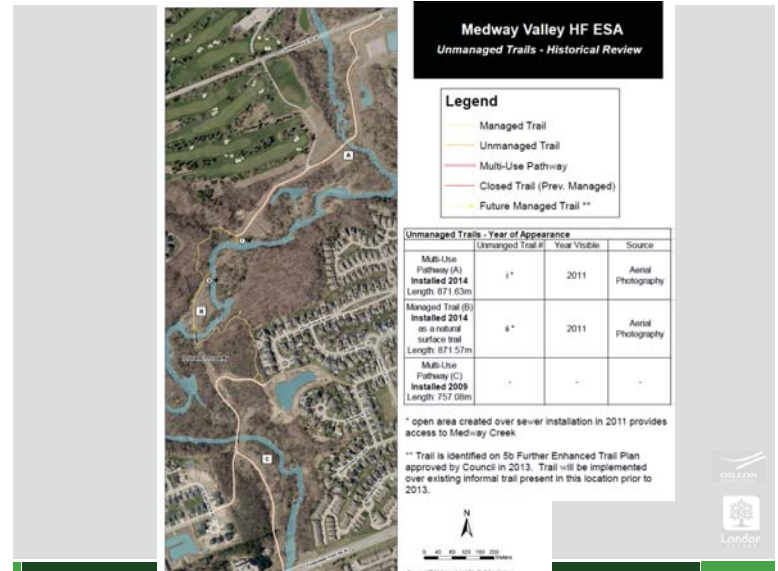
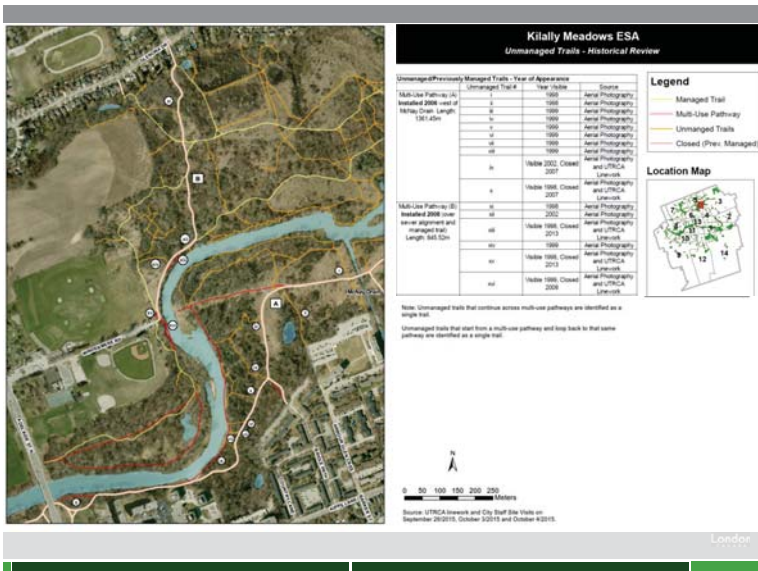
## Survey Results

- Question 3: What do you think could be improved in the MVHF ESA (south)?

### What do you think could be improved in the MVHF ESA (south)?

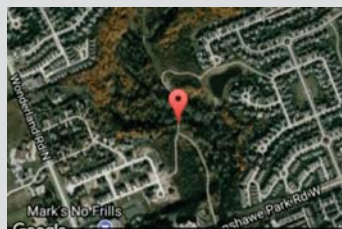


## Trail DATA



## Data from Trail Use Monitor in the MVHF ESA North

- Daily average - **123** people a day from April 2016 to August 2017
- More on weekends (152 a day) – less during the week (111 a day)
- Most people on one day was **432** on Oct 16, 2016
- 44,895** people / year
- All visits between 6am and 10pm **good news – consistent with rules**



## Overview of Revisions to Final CMP - Trail Strategy

With the revisions provided in the final CMP, the trail system through the MVHF ESA (when including both north and south) would be the longest accessible nature trail available throughout the City of London.

### Summary of Trail Lengths in MVHF ESA (south)

Trail Level	Existing Length (m)	Oct. 2017 Version (m)	Final March 2018 Version (m)
Level 1	6,169	4,967	4,834
Level 2	2,116	3,141	3,992
Level 3	487	1,358	1,358
Unmanaged/ Closed		5,435 m	

## Protected Area Annual Visitors, Area, and Trails

Protected Natural Area	Visits per year	Area in hectares	Kilometers of Trails
Medway Valley HF ESA (north) (2016-17)	44,895	62	3
<a href="#">Point Pelee National Park</a> (2015-16)	300,106	19	12
<a href="#">Pinery Provincial Park</a> (2010)	614,479	2,533	17

Comparison of Study raised by LAC member “**10 Factors that Affect the Severity of Impacts of Visitors in Protected Areas**, (Pickering, 2010)” with the **Guidelines for Management Zones and Trails in ESAs**, 2016 and Other Policies and Management for ESAs in London

- City’s Guidelines and related ESA protection policies meet or exceeds all Pickering’s recommendations



## Overcrowding in ESAs?

- Chair of EEPAC circulated New York Times piece Sept. 27/2017 - [National Parks Struggle With a Mounting Crisis: Too Many Visitors](#) to staff / EEPAC Working Group



- Zion is among the most visited parks in the system. In 2016, about 4.3 million people visited, up 60 percent from a decade ago. Considering a first for any national park: requiring reservations for entry.

Contrast with MVHF ESA (north) data at LAC 4:

- average -123 people a day from April 2016 to August 2017
- More on weekends (152 a day) – less during the week (111 a day)
- Most people on one day was 432 on Oct 16, 2016
- 44,895 people / year pass by the trail counter
- All visits between 6am and 10pm good news – consistent with rules



## Access 1 and 12 and Trails outside ESA Photos



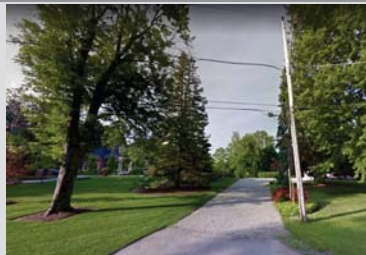
## Greenacres Photos

- Greenacres – Unopened Road Allowance is City Property



## Existing Access 12 – Street view

- Gloucester Road - Access 12



## Existing Trail Outside ESA – leading to Access 11

- Existing dirt / woodchip trail outside ESA behind homes



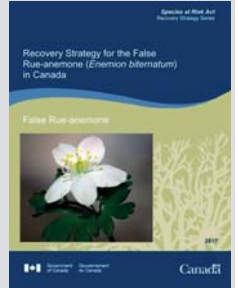
# FALSE RUE ANEMONE BACK UP SLIDES

- Restoration, Naturalization
- Adaptive management



# Response to EEPAC (& Nature London) Concerns False Rue-anemone

- Populations of sensitive species have continued to persist though pressured by invasive species (which are being controlled for).
- 5,435 m of unmanaged/informal trails are proposed to be closed and restored. **Approximately 725 m overlaps False Rue-anemone habitat.**
- Recovery Strategy for the False Rue-anemone (*Enemion biternatum*) in Canada (2017) clearly states as well "Off-trail recreation and trail use" is a threat to this sensitive species if populations undergo trampling and soil compaction."
  - Off-trail recreation goes on to refer primarily to ATV use, but also refers to inadvertent trampling and resulting soil compaction.
- Recommendations provided in CMP to help encourage users to remain on official trails through use of barriers, upgraded trail surfaces and signage. This is consistent with the federal Recovery Strategy.
- Measures to encourage users to remain on trails and divert users to areas away from the core habitat of sensitive species helps to mitigate the potential for inadvertent trampling
- Recovery strategy cites that "activities restricted to the**



**DILLON**  
ENVIRONMENTAL CONSULTANTS

Petruniak, Jennifer <jpetruniak@dillon.ca>

**RE: False Rue-anemone Mitigation Plan for Review**

1 message

Thompson, Melinda (MNR) <Melinda.Thompson@ontario.ca> Fri, Jul 4, 2014 at 2:53 PM  
 To: "Petruniak, Jennifer" <jpetruniak@dillon.ca>  
 Cc: Jonathan Harris <jharris2@dillon.ca>, "McDougall, Linda" <lmcdoug@london.ca>, Brandon Williamson <williamsonb@thamesriver.on.ca>

Hello Jennifer

I have only minor corrections and comments (see the attached). I endorse this Mitigation Plan as it appears to take sufficient steps to mitigate impacts to False Rue-anemone within the Medway Valley, as well as contributing to the reduction of a significant threat to the species.

Melinda

Melinda Thompson, B.A.Hon., M.Sc.  
 Species at Risk Biologist  
 Aurora District, Ministry of Natural Resources  
 50 Bloomington Rd Aurora, ON L4G 0L8  
 Tel. (905) 713-7425  
 Fax. (905) 713-7360  
 melinda.thompson@ontario.ca

**Holly J. Bickerton**  
Consulting Ecologist

143 Ainslie Ave. Ottawa, K2J 2Y1  
 (613) 790-7725  
 holly.bickerton@ranger.com

3 April 2018

Linda McDougall  
 City of London  
 287 Dundas St.  
 London, ON N6A 1H2

RE: False Rue-anemone recovery and the Medway ESA Conservation Master Plan (CMP)

Dear Ms. McDougall,

Thank you for contacting me to comment on the recovery of False Rue-anemone and the Medway ESA CMP as above. I am an Ottawa-based consulting ecologist and botanist specializing in species at risk, particularly at-risk plants. I compiled the first draft of the (2017) Environment Canada Recovery Strategy for the False Rue-anemone (*Enemion biternatum*) in Canada, which is available to the public on the federal Species at Risk Act registry (see reference below).

I have reviewed relevant sections and plans within the CMP and I believe it is consistent with the actions proposed in the recovery strategy for this federally Threatened plant species. By discouraging and decommissioning existing informal trails within the habitat of this species (see Fig. 4b of CMP), the CMP will reduce threats of trampling and disturbance to its sensitive habitat (see p. 20 and Table 3, p. 23 of recovery strategy). By improving trail surfaces adjacent to its habitat, the CMP will prevent visitors from widening wet and muddy trails, and further encroaching into suitable or even occupied habitat. The proposed trail upgrade (improving trail surface) outside the population and habitat as shown in the Concept Plan of the CMP (Level Two Trail from A11, Fig. 4b) directs visitors away from sensitive habitat toward other areas. By increasing signage (p. 37 of CMP), the public will be made aware of the sensitive nature of the habitat (Table 3 of recovery strategy, p. 13). All of these activities are consistent with and support the actions listed in the recovery strategy.

It is important to emphasize that improving surfaces of existing trails is not inconsistent with recovery of populations where it reduces threats to the species or its habitat. As stated in the recovery strategy, the "surfacing of existing, authorized/recreational trails would not result in destruction of critical habitat" (Table 5, p. 19). In my experience and 20 years of observation, well-planned, managed and signed trails protect sensitive habitat by encouraging visitors to stay on the path. In Ottawa, the National Capital Commission (NCC) created such a path through the Mud Lake Conservation Area, a birding area of national significance, over 10 years ago. The creation of this path has worked extremely well to discourage visitors from extensive wandering and trampling of vegetation. These observations and conclusions are supported by both the ecologist who designed the trail route, and by NCC land managers.

The False Rue-anemone population in London is in my opinion, well monitored and managed. The City of London has been active in addressing the most serious threat to this population: invasive Goutweed. By removing this aggressive competitor, monitoring data shows that the native False Rue-anemone populations in Medway Creek are stable to increasing after three years of treatments (see Invasive Species Control Program: Results for the Medway Heritage Forest ESA, January 2018). A clear and detailed plan to mitigate threats and monitor populations is in place (see False Rue-anemone Mitigation Plan: Medway Valley Heritage Forest [South] ESA, July 2014). As stated in the CMP, "on-going monitoring will continue to determine if controlled species re-established" (p.54). The stable to expanding size of this population suggests that it can persist and even recover when the predominant threat (invasive species) is removed, despite multi-use trails elsewhere in the Medway ESA.

Staff and consultants of the City of London were active contributors to the development of the recovery strategy, freely providing documents and data. In its development, the recovery strategy also underwent extensive review by ecologists and land managers at all levels of government, and was made available for review by the general public for several months.

The Medway Valley False Rue-anemone population is an important one for this species' recovery. In my opinion, the Medway ESA CMP and supporting work by the City of London will help to protect and restore the False Rue-anemone population within this densely populated urban area.

Please feel to contact me at the number above if I can provide any further information or assistance.

Yours sincerely,

**Holly Bickerton**  
 Consulting Ecologist, B.A.Sc., M.E.S.  
 Member of COSSARO, Field Botanist of Ontario, Ottawa Field-Naturalists  
 and Ontario Invasive Plant Council.

Reference:  
 Environment and Climate Change Canada. 2017. Recovery Strategy for the False Rue-anemone (*Enemion biternatum*) in Canada. Species at Risk Act Recovery Strategy Series. Environment and Climate Change Canada, Ottawa. vii + 37 pp.



## Protection of False Rue-anemone (*Enemion biternatum*), a Threatened<sup>A</sup> species found in the Medway Valley Heritage Forest ESA

**2013**  
Phase I Inventory identified Goutweed (*Aegopodium podagraria*) as a Threat to False Rue-anemone in MVHF ESA

**2014**  
City contracted UTRCA and Dillon to control Goutweed to assist in the recovery of a Threatened Species at Risk

**2015**  
Goutweed Control early success and native species return to understorey

Opportunity to increase awareness of Species at Risk and promote education of invasive species threats consistent with the recommendations in the proposed Recovery Strategy for the False Rue-anemone in Canada, 2016

The City of London was recognized for their innovative work, habitat protection and contributions to the Federal Recovery Strategy for the False Rue-anemone in Canada, 2016.

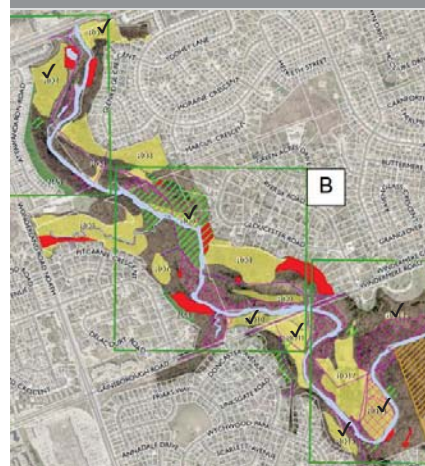
Existing trails in the ESA have helped to limit trampling and promote public awareness of this species, while also providing a physical barrier to prevent the spread of Goutweed

**2016**  
Goutweed population significantly reduced as of 2016/2017

**2017**  
False Rue-anemone identified in areas where Goutweed once existed

<sup>A</sup> "Threatened" means the species lives in the wild in Ontario, is not endangered, but is likely to become endangered if steps are not taken to address factors threatening it.

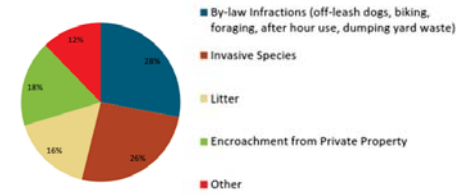
## Environmental Management Strategy: Restoration



- Previous Work - Majority of restoration work underway in 8 of 15 Restoration Overlays (RO) on Figure 2
- High Priority RO 5, 14 & 15 to protect SAR implemented in 2013-2017
- City / Dillon & UTRCA recognized for innovative work, SAR habitat protection and contributions to the [Federal Recovery Strategy for the False Rue-anemone \(Enemion biternatum\) in Canada](#)
- Phragmites high priority in all ESAs incl. Medway. Control since 2013 (RO 1 & 2)
- Current Work to manage Periwinkle, Goutweed, Buckthorn, Norway Maple, Phragmites, Loosestripe, and native tree / shrub plantings (RO 10, 11 & 13)
- Garlic Mustard pulled by SF Adopt an ESA
- Future Work – implement RO3, 4, 6, 7, 8, 9 & 12 to manage Buckthorn, Snowdrops, Woodland Sedge, plant trees & continue monitoring

## Adaptive Management for Dogs off Leash

What do you consider to be the biggest "Threat" to the ESA?



### Dogs off leash identified throughout the entire process by residents as big concern:

- Innovative measures to increase compliance with rules have worked in other natural areas (Tardona, 2012) – idea was circulated to EEPAC and OPSF Ratepayers Adopt an Group for consideration
- New measures could include banning all dogs from Medway Valley ESA south
- Increased compliance with dogs on leash rules shown on paved trails (99% compliance vs woodchip or un-paved trail sections 71-74%) (Leung et. al., 2015)



## Phase I Summary of Findings

1. All significant ecological features identified in Phase 1 were found to be compatible with the existing managed trails based on Chart 2 from the Guidelines for Management Zones and Trails in ESAs.
2. Fifteen areas were identified that require active ecological restoration or special management. Majority of ecological restoration work is underway in 8 of 15 Restoration Overlays. (Figure 2)
3. Five areas were identified for naturalization. Two currently identified in Phase II. (Figure 2)



## Phase I CMP Summary of Findings

5. **Nine wildlife habitat types identified & recommendations provided for:**
  - Colonialily-Nesting Bird Breeding Habitat
  - Amphibian Breeding Habitat
  - Seeps and Springs
  - Habitat for Species of Conservation Concern:
    - Shrubby St. John's Wort
    - Striped Cream Violet
    - Slender Satin Grass
    - American Gromwell
    - Green Dragon
6. **Habitat for Threatened or Endangered native species identified:**
  - Butternut
  - Cucumber Magnolia
  - Kentucky Coffee-tree
  - False Rue-anemone
  - Queensnake
  - Spiny Softshell
  - SAR bats



## EEPAC INVOLVEMENT WITH FALSE RUE-ANEMONE EEPAC is Circulated ~ 4 times a year with False Rue-anemone Updates

- March 2018 Staff ESA Capital Project List included False Rue Anemone management
- August 2017 Dillon Presented August CMP and False Rue-anemone information
- October 2017 - Dillon Presented October CMP and False Rue-anemone information
- September 2017 – Staff ESA Committee Minutes included False Rue-anemone management work
- March 2017 - Staff ESA Committee Minutes included False Rue-anemone management work
- January 2017 Staff Presented and Circulated Invasive Species Control Program Results Medway Valley Heritage Forest ESA, December 2016
- January 2017 Dillon Presented and Circulated Memo Response to EEPAC on False Rue-anemone and Green Dragon, Medway Valley Heritage Forest ESA.
- November 2016 Staff Presented and Circulated Invasive Species Control Program Results Medway Valley Heritage Forest ESA, December 2015 (Second time)
- January 2016 Staff Presented and Circulated Invasive Species Control Program Results Medway Valley Heritage Forest ESA, December 2015
- October 2015 - ESA Update and Capital Project List included information about Invasive Species Work to protect SAR/ False Rue-anemone in MVHF ESA
- February 2015 List of ESA Capital Projects included False-Rue-anemone project
- April 2015 Presentation of revised Phase 1 CMP including False Rue anemone
- May 2015 – Ecosystem Planning presentation included slides on False Rue-anemone
- November 2014 – ESA Update included information about Invasive Species Work to protect SAR in MVHF ESA
- September 2014 – Abstract of False Rue-anemone Goutweed project presentation to Ontario Invasive Plant Council AGM on EEPAC's agenda
- + EEPAC attended all 6 LAC meetings in 2017 for CMP process including discussions on False Rue-anemone

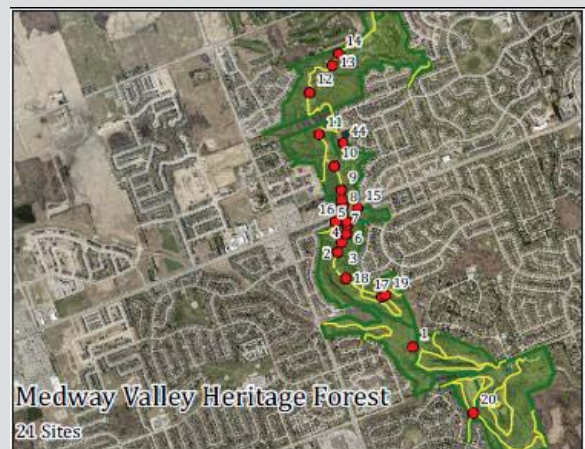


## Environmental Management Strategy: Naturalization



- NA1, NA2 and NA3 – Part of RO9, RO11, RO12
- NA4: Identified during Phase I
- NA5: Identified during Phase II
- High quality ecological restoration of mown lawn areas into native meadows and succession to woodland
- Restoration work in association with trail implementation over lawn areas could define limit of restoration and limit future encroachment

## Phragmites Treatment in Medway – 21 sites have been treated and are Monitored annually



## 2017 Council Resolution



February 15, 2017

J. M. Fleming  
Managing Director, Planning and City Planner

I hereby verify that the Municipal Council, at its meeting held on February 14 and February 15, 2017 resolved:

4. That, on the recommendation of the Managing Director, Planning and City Planner, the following actions be taken with respect to the Midway Valley Heritage Forest Environmentally Significant Area (south) Conservation Master Plan (Phase 1 and 2):

41. the Natural Heritage Inventory and Evaluation for the Midway Valley Heritage Forest Environmentally Significant Area (MNHF ESA), forming Phase 1 of the Conservation Master Plan, approved by the staff report dated February 8, 2017 as Appendix 'A', BE APPROVED in accordance with Section 15.3.3. of the Official Plan and policies 1421 and 1422 of The London Plan;

42. the Addendum to the Natural Heritage Inventory and Evaluation MNHF ESA, including the existing trail network approved by the staff report dated February 8, 2017 as Appendix 'B', BE APPROVED in accordance with Section 15.3.3. of the Official Plan and policies 1421 and 1422 of The London Plan;

43. the Local Advisory Committee BE INCLUDED in the trail planning and discussions relating to environmentally significant areas as appropriate;

44. the members of the Environmental and Ecological Planning Advisory Committee, Nature London and the community BE THANKED for their work in the review and comments on the Phase 1 document; and

45. based on the process with the recently updated Guidelines for Management Zones and Trails in ESAs, Phase 1 of the Conservation Master Plan for the Midway Valley Heritage Forest Environmentally Significant Area (south) BE INITIATED. (2017-422) (AM/PEC)

*J. M. Fleming*

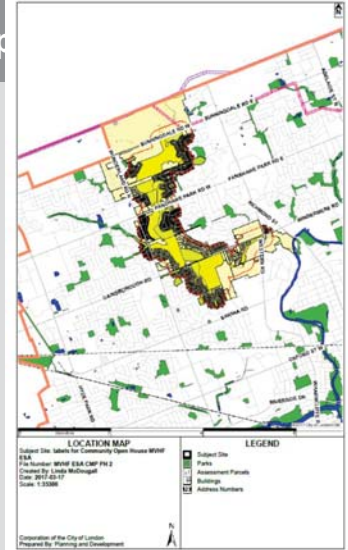
C. Saunders  
City Clerk

46.

A. Macpherson, Manager, Environmental and Parks Planning  
I. McLaughlin, Ecological Planner  
I. Midway, Ecological Planner  
Chair and Members, Environmental and Ecological Planning Advisory Committee



## Radius Notification Map



## Continued Community Engagement

- Additional content identifies federal and provincial initiatives to help increase appreciation for and accessibility to nature while also educating:
  - Mood Walks** is a province-wide initiative that promotes physical activity in nature, or "green exercise," as a way to improve both physical and mental health.
  - Naturally Accessible - Discovering Ontario's Land Trusts** is an initiative of the Ontario Land Trust Alliance (OLTA) in partnership with the Accessibility Directorate of Ontario.
  - Canadian Parks Council - Healthy by Nature**, Encouraging Canadians to spend more time in parks will support improved physical and mental/emotional health, and provide opportunities to inform and educate people about the important connection between healthy ecosystems and healthy human populations.



## END PRESENTATION





OZ-8852  
Planner: L. Maitland  
Telephone: 519-661-2489 extension 7360  
Fax: 519-661-5397  
Email: [lmaitlan@london.ca](mailto:lmaitlan@london.ca)  
Website: [www.london.ca](http://www.london.ca)

April 25, 2018

**NOTICE OF PUBLIC MEETING  
BEFORE THE PLANNING & ENVIRONMENT COMMITTEE  
for OFFICIAL PLAN & ZONING BY-LAW AMENDMENT  
APPLICATION**

**APPLICANT:**

The Corporation of the City of London

**LOCATION:**

City-wide.

**PURPOSE AND EFFECT:**

The purpose and effect of this Official Plan and Zoning By-law is to introduce a policy framework within the Official Plan, 1989 and the London Plan and to add new zoning definitions with the Zoning By-law for Supervised Consumption Facilities and Temporary Overdose Prevention Sites. These uses provide for locations that permit the consumption of illicit substances authorized through an exemption granted by the Federal or Provincial government.

**POSSIBLE AMENDMENT:**

Amend the Official Plan, 1989 and The London Plan to add new policies related to Supervised Consumption Facilities and Temporary Overdose Prevention Sites which: identify Supervised Consumption Facilities and Temporary Overdose Prevention Sites as separate land uses and distinguish them from other land uses; establish municipal land use goals related to their establishment; provide criteria for future Zoning By-law amendments requesting to add the uses; and to provide for a neighbourhood consultation process.

Amend Zoning By-law Z.-1 related to Supervised Consumption Facilities and Temporary Overdose Prevention Sites to add a new definition for both uses.

**PUBLIC MEETING:**

By letter dated November 23, 2017, you were informed of the possible amendment described above.

You are now advised that the Planning & Environment Committee will consider this application at its meeting on **Monday, May 14, 2018 no earlier than 4:45 p.m.** Meetings are held in the Council Chambers of City Hall, located at 300 Dufferin Avenue (north-east corner of Wellington Street). Each application is allocated a time for public delegations. It should be recognized however, that the Planning & Environment Committee may find it necessary to exceed the limit. Your co-operation is appreciated in the event that you have to wait for your application to be considered.

**Please Note:** Personal information collected and recorded at the Public Participation Meeting, or through written submissions on this subject, is collected under the authority of the Municipal Act, 2001, as amended, and the Planning Act, 1990 R.S.O. 1990, c.P.13 and will be used by Members of Council and City of London staff in their consideration of this matter. The written submissions, including names and contact information and the associated reports arising from the public participation process, will be made available to the public, including publishing on the City's website. Video recordings of the Public Participation Meeting may also be posted to the City of London's website. Questions about this collection should be referred to Cathy Saunders, City Clerk, 519-661-2489 extension 4937.

If a person or public body does not make oral or written submissions at a public meeting or make written submissions to the City of London before the proposed amendment is adopted, the person or public body may not be entitled to appeal the decision of the Council of the City of London to the Ontario Municipal Board, or may not be added by the Board as a party to the hearing of an appeal unless, in the opinion of the Board, there are reasonable grounds to do so.

A neighbourhood or community association may exist in your area. If it reflects your views on this proposal, you may wish to select a representative of the association to submit comments on your behalf.

Your representative on City Council would be pleased to discuss any concerns you may have with this application.

### **FOR MORE INFORMATION:**

Copies of this report are available from Planning Services and will be available at the Planning & Environment Committee meeting. If you wish to view additional information or material about the requested Official Plan amendment and/or Zoning By-law amendment, it is available for public viewing at Planning Services, 206 Dundas St., London, ON, Monday to Friday, 8:30a.m.-4:30p.m.

**For more information, please call L. Maitland at 519-661-2489 extension 7360, referring to "OZ-8852".**

### **TO BE NOTIFIED:**

If you wish to be notified of the adoption or refusal of a request to amend the Official Plan and Zoning By-law, you must make a written request to the City Clerk, 300 Dufferin Avenue, P.O. Box 5035, London, ON N6A 4L9. You will also be notified if you address the Planning & Environment Committee at the public meeting about this application and leave your name and address with the Secretary of the Committee.



**From:** Nicole Turner  
**Sent:** Thursday, May 10, 2018 12:41 PM  
**To:** Bunn, Jerri-Joanne <[jbunn@London.ca](mailto:jbunn@London.ca)>  
**Subject:** Formal Resignation

Hi Jerri-Joanne, I hope you are well!

I am writing to formally resign from my Post Secondary Student Representative position on ACCAC, as I am graduating in June. Thank you very much for the opportunity, I would greatly appreciate being involved in future projects/kept up to date if possible!

Could you send me the link to the application, please? I will then share it with folks who are interested in the position.

Thanks and take care,

Nicole

--

Nicole Turner