

Agenda

Accessibility Advisory Committee

3rd Meeting of the Accessibility Advisory Committee

March 22, 2018, 3:00 PM

Committee Room #4

	Pages
1. Call to Order	
1.1 Disclosures of Pecuniary Interest	
2. Scheduled Items	
2.1 3:00 PM - L. McDougall, Ecologist – Conservation Master Plan for the Medway Valley Heritage Forest ESA (south)	2
2.2 3:15 PM - J. Michaud, Landscape Architect – Playground Proposal for the South West Community Centre	
3. Consent	
3.1 2nd Report of the Accessibility Advisory Committee	40
3.2 City of London Planning Services Committee Information Meeting - Supervised Consumption Facilities and Temporary Overdose Prevention Sites	43
3.3 Notice of Application - City of London - Old East Village	44
3.4 Municipal Council resolution from its Meeting held March 6, 2018, with respect to the 1st report of the Accessibility Advisory Committee	48
4. Sub-Committees and Working Groups	
5. Items for Discussion	
5.1 2018 ACCAC Work Plan	49
5.2 ACCAC Deferred List	53
6. Deferred Matters/Additional Business	
7. Adjournment	

Next Meeting: April 26, 2018



MEETING MINUTES

Subject: ESA CMP Planning Process and the AODA Information Meeting

Date and Time: February 21, 2018 17:30 – 19:00

Location: Stevenson Hunt Room, Central Library, City of London

Our File: 18-7086

Attendees

Michael Dawthorne*	Accessibility Advisory Committee (AACAC)
Katrina Moser	Environmental & Ecological Planning Advisory Committee (EEPAC)
Dan Jones	Upper Thames River Conservation Authority (UTRCA)
Sandy Levin	MVHF ESA Adopt an ESA: Sherwood Forest / Orchard Park RPA
Chris Sheculski	Sunningdale West RPA
Dr. Rhonda Bathurst	Museum of Ontario Archaeology
Jack Blocker	Huron University College
Mady Hymowitz	Nature London
Alex Vanderkam	Thames Valley Trail Association (TVTA)
Renee Agathos	Sunningdale North Residents Association
Linda McDougall	City of London
Andrew Macpherson	City of London
James MacKay+	City of London
John Fleming	City of London
Karla Kolli	Dillon Consulting Limited
Jennifer Petruniak	Dillon Consulting Limited
Jonathan Harris	Dillon Consulting Limited

*indicates an alternative representative

+had to depart earlier than the meeting end

Regrets

Greg Thorn	Sherwood Forest / Orchard Park RPA
Elgin Austen	MVHF ESA Adopt an ESA: Friends of Medway Creek
Michael Lunau	Western University
Bruce West	Attawandaron Residents
John Levstik	Old Masonville Ratepayers
Keith Zerebecki	MVHF ESA Adopt an ESA: Sunningdale West Rate Payer Association (RPA)
Brenda McQuaid	Heritage London Foundation

The main purpose of this meeting was to further clarify the City of London's requirements to meet the *Accessibility for Ontarians with Disabilities Act* (AODA) within the Conservation Master Planning process. The meeting also reviewed three main concerns with the October 2017 MVHF ESA (south) CMP and how they were addressed before the final version of the CMP is submitted to the Planning and Environment Committee (PEC). The meeting format included presentation of information related to both AODA and

the MVHF ESA (south) CMP. Opportunities were provided throughout the presentation for participants to ask questions and discuss the material being presented.

The meeting started with Andrew Macpherson welcoming those in attendance. Andrew relayed that the meeting was also being held to notify Local Advisory Committee (LAC) members of major revisions to the CMP that had been made to the October 2017 version of the CMP in response to comments received from committees of Council. It had been previously promised that if significant changes to the version to be submitted to PEC were made, the City would report back to the LAC first.

Andrew then introduced John Fleming from the City who is the Managing Director of Planning and the City Planner. Andrew noted that John would be the one bringing the motion to adopt the CMP to Council.

Mr. Fleming introduced himself to the LAC members in attendance and thanked them for their participation in the planning process including the 5 LAC meetings, 2 Open Houses, and a visit to the Orchard Park Sherwood Forest Ratepayers AGM, and for bringing their local perspectives and expertise. Mr. Fleming provided his insight regarding where the CMP stands right now, acknowledging there are a few outstanding issues that the scientists and facilitators from Dillon Consulting will lead us through.

Notes

Item	Discussion
1.	Agenda Item - Welcome to Information Meeting
1.1.	John Blocker posed a question about the documents provided at the meeting [referring to the comment letters received from ACCAC and EEPAC, as well as a Conservation Action Alert from Nature London], wondering who they were specifically addressed to?
1.1.1.	Linda McDougall noted that the January 2018 letter from ACCAC was directed to the Environmental and Parks Planning (E&PP) staff at the City, the December 2017 EEPAC Statement and Recommendations were from EEPAC's agenda (and the Planning and Environment Committee (PEC) agenda) and the Nature London Conservation Action Alert was distributed to subscribers and was forwarded to E&PP staff at the City.
1.1.2.	Jack noted he was aware of one other document (referring to an alternate report) that was submitted for inclusion on the February PEC agenda but was not included in the documents provided to the members of the LAC.
1.1.3.	Linda noted that any documents submitted to the clerk for the PEC meeting were not sent to or received by City staff in E&PP and therefore would not be presented as part of the LAC process but included as part of the PEC meeting when it occurs.
1.1.4.	Karla Kolli reiterated that one of the focuses of this meeting was regarding AODA and the specific letters provided from EEPAC and ACCAC to the City, as these are two official committees that advise Council.
1.1.5.	Jack noted that he was still "baffled" by the choice of documents that were circulated to the LAC for this meeting.

1.1.6. Andrew closed off this comment by noting that the documents circulated to the LAC, in particular the ACCAC and EEPAC formal responses, were those that were received by City staff at E&PP. Andrew also noted that City staff from E&PP have not seen the document Jack was referring to.

2. Agenda Item - AODA and the CMP Process

2.1. Sandy Levin requested clarification on the wording in the AODA concerning “new or redeveloping” of trails and “must”. If the City is not constructing new trails or redeveloping trails then there is no “must” and no requirement to make trails accessible?

2.1.1. Jen Petruniak reiterated Dillon and the City’s interpretation of the AODA, as presented on the slides [that once the CMP process is started, the review pertains to all trails within the defined boundary of the ESA], and asked Michael Dawthorne to provide ACCAC’s interpretation as well.

2.1.2. Michael noted that ACCAC sees the CMP as applying to the entire valley and when an ESA is under review during a CMP process accessibility of trails for the entire feature is to be reviewed as a whole. This implies that a review of all trails in the MVHF ESA (south) was required though doesn’t mean all trails would be required to be made accessible. Michael noted that ACCAC’s interpretation of the AODA with regards to trails is the same as Dillon and City’s based on direction provided in the Guidelines. Michael closed his statement by also noting that improving accessibility of trails following the Guidelines doesn’t conflict with or override protection of the valley or the environment.

2.1.3. Jen touched on accessibility and protection of the environment as working together following the Guidelines, noting the exceptions under the AODA and noting that an example of how the exception is applied by the City, according to the Guidelines, will be provided during the presentation.

2.2. Mady Hymowitz posed the question whether any other CMP’s for ESAs have used this interpretation of AODA.

2.2.1. Andrew noted that other CMP’s, the most recent being The Coves, did include the same interpretation of the AODA.

2.2.2. Jen also noted that this is the first CMP applying the 2016 Guidelines and that the previous 2012 Trail Standards had too much ambiguity with regards to the definition of management zones and applicable types of trails permitted to consistently apply the AODA.

2.3. Jack wanted to gain a better understanding of the AODA as it applies to trails. Jack questioned that if the City is reviewing all trails then under AODA, all trails have to be made accessible?

2.3.1. Jen provided a response that while all trails are reviewed as part of the CMP process in the Guidelines, not all trails would need to be made accessible if the exceptions identified under the AODA apply. Jen referred back to the exceptions under the AODA which were provided on one of the presentation slides. As part of the review of trails, the City is required under the AODA to make trails accessible where this doesn’t pose a significant risk that would adversely affect water, fish, wildlife, plants, invertebrates, species at risk, ecological integrity and/or natural heritage values. The Guidelines are

clear that in less sensitive, culturally influenced, Natural Environment zones and over sewers for example, accessible trails are permitted and will be provided.

3. Agenda Item – References to AODA in Guidelines

- 3.1. A pause was made during the presentation for any questions regarding this portion of the presentation. No questions or comments were made.

4. Agenda Item – Revisions to MVHF ESA (south) CMP/Overview of Revisions to Final CMP - Trail Strategy (Maps)

- 4.1. Katrina Moser noted being confused that the bridge at location D is now okay and included in the CMP. Katrina referred to thinking that D had been noted in a previous version of the CMP as not being considered due to environmental concerns.

- 4.1.1. Jen noted that the D location was previously included in the August 2017 version of the CMP and complied with the Guidelines and was dropped in the October version as there was uncertainty regarding feasibility for implementation and challenges with providing accessibility up to Access 13 in a Nature Reserve zone. The D location was previously noted as a likely candidate for stepping stones or a bridge. Jen provided an overview of the bridge feasibility review Dillon engineers undertook as an extra step (and not part of the CMP process) to determine whether a pedestrian bridge would be feasible. Jen noted that a pedestrian bridge similar in specifications to what was most recently constructed in the MVHF ESA (north) near Sunningdale Road W. is feasible at both locations A and D.

- 4.1.2. Mady wanted to clarify that the bridge noted at D was the one that was included in previous draft and then taken off.

- 4.1.3. Jen confirmed that there was a “linkage” (i.e., stepping stones or a bridge) identified at location D that was included in the August 2017 draft of the CMP and then removed in the subsequent October 2017 version.

- 4.2. Andrew noted that ACCAC’s original request was that a connection from A13 to A18/A19 which would not be feasible without a bridge in place. It was also noted that the request of ACCAC could not be included as this would have required Level 2 trails in Natural Reserve which would not comply with the Guidelines. To fulfill the ACCAC request, the request for an accessible connection was revised by ACCAC in their January 2018 letter, to be from A11 to D and from D to A18/A19.

- 4.3. Susan Hall (attended as EEPAC’s alternate rep.) noted that AODA compliance seems paramount and wanted clarification on the process and why the AODA was not mentioned at the beginning?

- 4.3.1. Michael noted the AODA was in place well before Guidelines were developed, and during the development of the Guidelines the AODA was included.

- 4.3.2. Chris Sheculski noted that principles of AODA were brought up during first LAC meetings.

- 4.3.3. Karla also provided clarification that the AODA was brought into the development of the Guidelines, as approved by Council, and was outlined right at the beginning of the LAC meetings.

- 4.4. Alex Vanderkam wanted clarification that the LAC would get a copy of the final CMP.

4.4.1. Jen confirmed that LAC members would be circulated a link to the final CMP prior to submission of the document to the PEC.

5. **Agenda Item - EEPAC (and Nature London) Concerns/ Response to EEPAC Concerns**

5.1. A pause was made for any questions regarding this portion of the presentation. No questions or comments were made.

6. **Next Steps**

6.1. Mady feels like she has been put in a difficult position. Appreciates the needs and requirements of AODA as raised by ACCAC, but feels sandbagged with the appearance of a bridge at D that was previously removed in the October 2017 version of the CMP.

6.1.1. John Fleming noted the City was committed to the continued consultation with the LAC, as evidenced by presenting the revised content in the MVHF ESA (south) CMP to the LAC first, prior to submission to PEC or distribution to the general public via the City website.

6.2. Susan brought up her previous comment regarding ACCAC/AODA. Susan noted it would have been more appropriate to have received more overview on how the AODA would factor into the CMP process and trail management strategy component earlier in the process. Susan expressed how she felt like the opinions of the ACCAC were not clearly represented during the LAC meetings.

6.3. Katrina echoed Mady's comment and also has concerns that the timeline is rather short with the upcoming presentation of the CMP to the PEC being March 19. Katrina noted that this would not allow enough time to present the final CMP to EEPAC prior to the PEC meeting. Katrina requested more time to allow her to bring this back to EEPAC to review as D was not included prior to.

6.3.1. Jen wanted to know what Katrina would like to bring back.

6.3.2. Katrina wanted to see comparison of maps again and those would be the most crucial to bring back to EEPAC

6.3.3. Linda noted that the August version of the CMP did include the Linkage at location D and the City received comments back from EEPAC with regards to Linkage D. E&PP staff and Dillon provided formal Memo responses to EEPAC's comments which were circulated on EEPAC's agenda and through the LAC.

6.3.4. Jen also noted that the linkage at location D has always been presented as complying with the Guidelines.

6.4. Sandy requested that the slides be provided prior to the March 7 release of the finalized report also noting a tight timeline to get anything on the PEC agenda.

6.5. As there were concerns regarding the presented timeline of releasing the final CMP on March 7 to the LAC and the presentation to the PEC being March 19, Karla inquired with the City whether the March 19 date is set or open for discussion.

6.5.1. Andrew noted that it would be possible to move the presentation date.

6.5.2. John also noted that City can be flexible with the dates but does want to avoid delaying the process much further noting we have heard from the scientists at Dillon that the revised CMP complies with Guidelines. The City doesn't want to rush the process but

does want to move things forward as many members of the LAC are looking forward to implementation of the CMP.

- 6.5.3. Jen also noted that the information in the final document is similar to the August 2017 version with regards to the bridge at D and other revisions are minor.
- 6.6. Discussion was held between the LAC members, City and Dillon as a more appropriate date to present the CMP to the PEC given the overlapping March break and Easter/Passover with upcoming PEC meetings. It was agreed upon by the LAC members in attendance that the April 16 meeting of the PEC would allow for more time to review the final CMP and submit items for the PEC meeting agenda.
- 6.7. The City and Dillon will review the revised timeline and let the LAC know when the revised CMP would be available.
- 6.8. This information meeting concluded at 18:35.

Errors and/or Omissions

These minutes were prepared by Jonathan Harris (Dillon Consulting) who should be notified of any errors and/or omissions.



ESA CMP Planning Process and the AODA

Information Meeting

February 21, 2018

8



London
CANADA

Presentation Overview

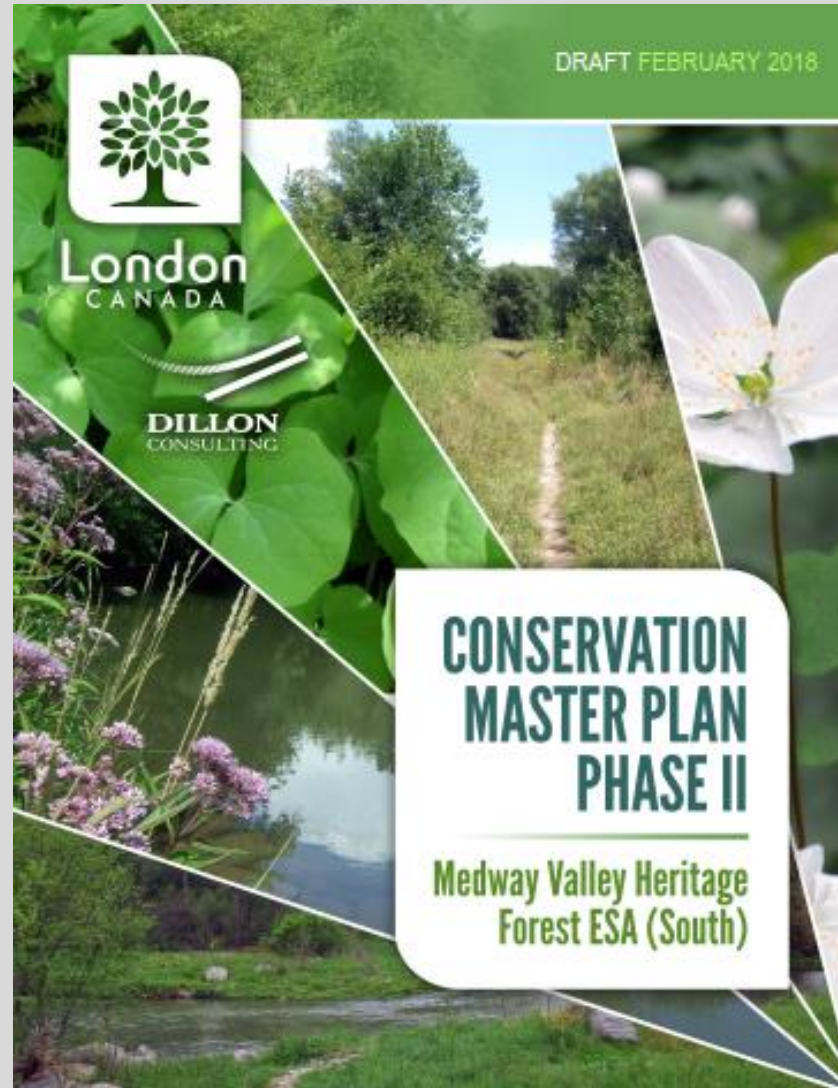
- Welcome to Information Meeting
- Purpose and Goals of Meeting
- AODA and the Conservation Master Planning Process
- What this means for the MVHF ESA (south) CMP?
 - What has remained the same in the CMP?
 - What was revised in the CMP to meet the Guidelines and AODA?
- Next Steps



Purpose of Meeting

Purpose of the meeting:

- To clarify the City of London's requirements to meet the *Accessibility for Ontarians with Disabilities Act* (AODA) within the Conservation Master Planning process.
- To review three main concerns with the October 2017 MVHF ESA (south) CMP before it is submitted to the Planning and Environment Committee



CONSERVATION MASTER PLAN PROCESS

PHASE 1:

- Community Engagement and Participation
- Life Science Inventory and Evaluation
- Boundary Delineation
- Application of Management Zones & Review of Existing Trails
- Identifying Management Issues

PHASE 2:

- Community Engagement and Participation
- Goals, Objectives, Recommendations
- Ecological Protection, Enhancement & Restoration
- Trail Planning & Design Process
- Priorities for Implementation
- Final Conservation Master Plan



Guidelines for Management Zones and Trails in ESAs

Approved by Council February 14, 2017

- Endorsed by Trails Focus Group on May 17, 2016
- Trails Focus Group that endorsed the Guidelines included members of the MVHF ESA (South) CMP Phase II LAC:
 - EEPAC;
 - ACCAC;
 - Nature London;
 - UTRCA;
 - MVHF ESA Adopt an ESA: Friends of Medway Creek; and,
 - MVHF ESA Adopt an ESA: Orchard Park/ Sherwood Forest Ratepayers.
- City has received external recognition for Guidelines including an [Award for Service to the Environment](#) by the Ontario Association of Landscape Architects

Guidelines Revision History |

Guidelines Revision History

Version	Date	Prepared By	Description
1.0	June 4, 2012	City of London Parks Planning and Design, Planning Division with Schollen & Company Inc. and North South Environmental	Approved Planning and Design Standards for Trails in Environmentally Significant Areas
2.0	April 25, 2016	City of London Environmental and Parks Planning, Planning Services and Dillon Consulting Limited	Draft revised guidelines based on consultation with a Trails Focus Group
2.1	May 12, 2016	City of London Environmental and Parks Planning, Planning Services and Dillon Consulting Limited	Revised guidelines submitted to the Trails Focus Group for endorsement
2.2	May 17, 2016	City of London Environmental and Parks Planning, Planning Services and Dillon Consulting Limited	Guidelines endorsed by the Trails Focus Group

Page 1 of 6



MEETING MINUTES

Subject: Trails Focus Group
Date and Time: Monday, May 16, 2016 5:15 – 7:00 pm
Location: London City Hall
File No.: 16-3052

Attendees

Shaughnessy Boland	Westminster Working Group / Adopt an ESA WMP
Ian Bailey	Friends of Killaly Meadows/ Adopt an ESA
Brandon Williamson	UTRCA
Anita Caveney	Nature London
James MacKay	City of London
Linda McDougall	City of London
Andrew Macpherson	City of London
Michael Dawthorne	Accessibility Advisory Committee (ACCAC)
Sandy Levin	Neighbours of Sherwood Forest Adopt an ESA Medway VHF ESA
Dave Potten	Friends of Medway Creek / Adopt an ESA
Don McLeod	Friends of Meadowlily Woods - Adopt an ESA
Thom McClenaghan	Friends of the Coves Subwatershed Inc./ Adopt an ESA
Lauren Des Marteaux	EEPAC
Dave Wake	Kains Woods / Adopt an ESA
Karla Koll	Dillon Consulting, Facilitator
Jennifer Petruniak	Dillon Consulting
Jonathan Harris	Dillon Consulting

Regrets:
 Jane Vincent Havelka Thames Valley Trail Association

*Gary Smith was unable to attend and Don arrived as his alternate.




Documentation of Meeting Minutes

These meeting minutes document Meeting #5 of the Trails Focus Group (TFG). The purpose of the meeting was to review the updated City's Guidelines for Management Zones and Trails in Environmentally Significant Areas (hereafter referred to as the "Guidelines"). Prior to the fifth meeting of the TFG, the City distributed electronic versions of the revised guidelines to members for review.

Purpose for Meeting #5

Prior to this meeting #5 of the TFG, the full revised Guidelines document was distributed for review by TFG members. During the meeting, Dillon led a review of the Guideline document and members of the TFG provided additional feedback and discussion of particular topics

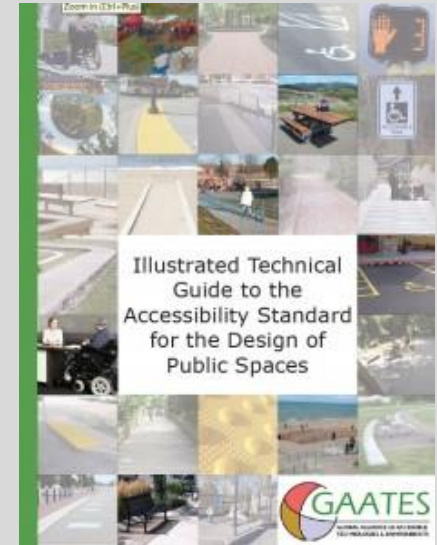
DILLON CONSULTING LIMITED
www.dillon.ca

AODA and the CMP Process

By law, you must make recreational trails accessible if you are:

- a private or non-profit organization with 1+ employee(s) or a public sector organization (i.e. the City of London); and
- building **new** public recreational trails and planning to maintain them or **making changes** (i.e., redevelop) to existing trails and planning to maintain them
- ***The Design of Public Spaces Standard (Ontario Reg. 191/11) (“the Standard”)*** - there can be exceptional conditions where the need to provide accessible trails may need to be reviewed with other legitimate concerns:
 - Exceptions to making the trail accessible are permitted where it can be demonstrated the accessibility requirements would pose a significant risk that would adversely affect water, fish, wildlife, plants, invertebrates, species at risk, ecological integrity or natural heritage values
 - In such instances, ***the City is expected to meet the requirements of the Standard to the greatest extent possible.***



References to AODA in Guidelines

Section 2.1: Policy for Trail Planning and Design

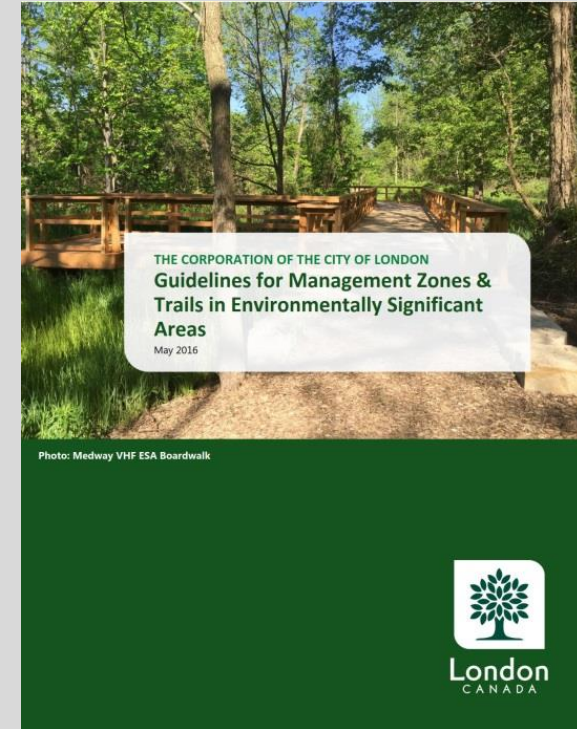
- Enjoyable, safe, accessible trails for recreation appropriate in an ESA and learning environment will be permitted in accordance with recognized accessibility legislation (such as the *Accessibility for Ontarians with Disabilities Act, 2005*), best practices and the above principles [outlined in Guidelines].

Section 2.3: Policy for Trail Planning and Design

- Trails to permit access for persons with disabilities, consistent with these guiding principles and AODA requirements, **will be provided** where this can be achieved while protecting the ecological integrity and ecosystem health of the ESA.

Section 7.1.2 : Design and Construction: Trails

- Design and Maintenance Standards: Where the trail is deemed accessible, the trail in its entirety shall meet AODA recreational trail surface requirements for both firmness and stability.



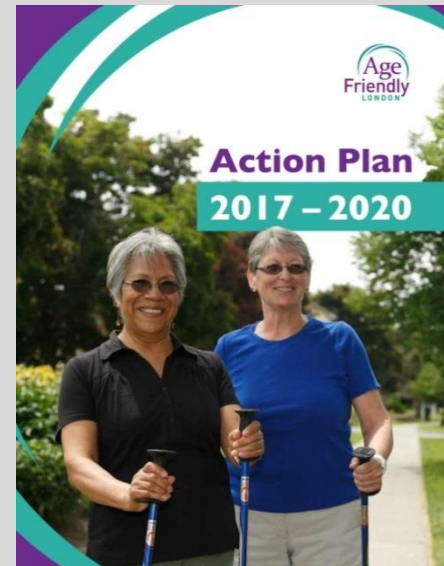
Additional City Policies Taken Into Consideration

The Age Friendly London Action Plan (2017-2020)

- Includes recommendations to increase the age friendliness of trails
- Neighbourhood profiles for Medway and Masonville areas indicate age demographics of 65+ are increasing while younger age groups are on the decline
 - Masonville 2006-2011
 - 28% increase in 65+
 - Medway 2006-2011
 - 10% increase in 65+

London Strengthening Neighbourhoods Strategy (2017-2020)

- Provides recommendations and strategies to empower and create sustainable, safe and active communities while also encouraging diversity and inclusiveness



Recent Comments on the MVHF ESA (south) CMP

Generally two opinions regarding the CMP were voiced by the community and received through public engagement. The two opinions are well-summarized by the two advisory committees to Council, who were also represented on the LAC:

- **Accessibility Advisory Committee of Council (ACCAC):**
 - *“Doesn’t support CMP as proposed upgrades to accessibility are superficial; inconsistent with assurances made to ACCAC in the past; inconsistent with legislation (and the spirit of the legislation); and fall significantly short in providing equitable, quality access to the valley for all Londoners, regardless of ability.”*
 - *“ACCAC is supportive of some proposed changes, and could support the plan with two additional amendments.”*
- **Environmental and Ecological Planning Advisory Committee (EEPAC):**
 - *“Rejects any CMP that includes hardening of trails or bridge crossings of the Medway Creek as it would fail adequately protect the long-term ecological integrity of the ESA.”*
 - *“Instead of focusing on increasing recreational use of the area, EEPAC encourages the council and staff to see a secondary goal as an opportunity for MVHF ESA to become a renowned demonstration site of best practises for the protection of ecological integrity, diversity and species at risk within an urban area.”*

Revisions to MVHF ESA (south) CMP

Section of CMP	Overview of <i>Main Changes*</i> from Oct. 2017 version
Environmental Management Strategy	
3.2 - Restoration	No change
3.3 - Naturalization	No change
3.4 - Trail Management	Revisions required
Adaptive Management and Monitoring Framework	
4.3 – Monitoring	No change
Continued Community Engagement	
5.1 Stewardship	No change
5.2 Education	Additional content added
5.3 Community Events	No change
5.4 Opportunities for Scientific Research	No change

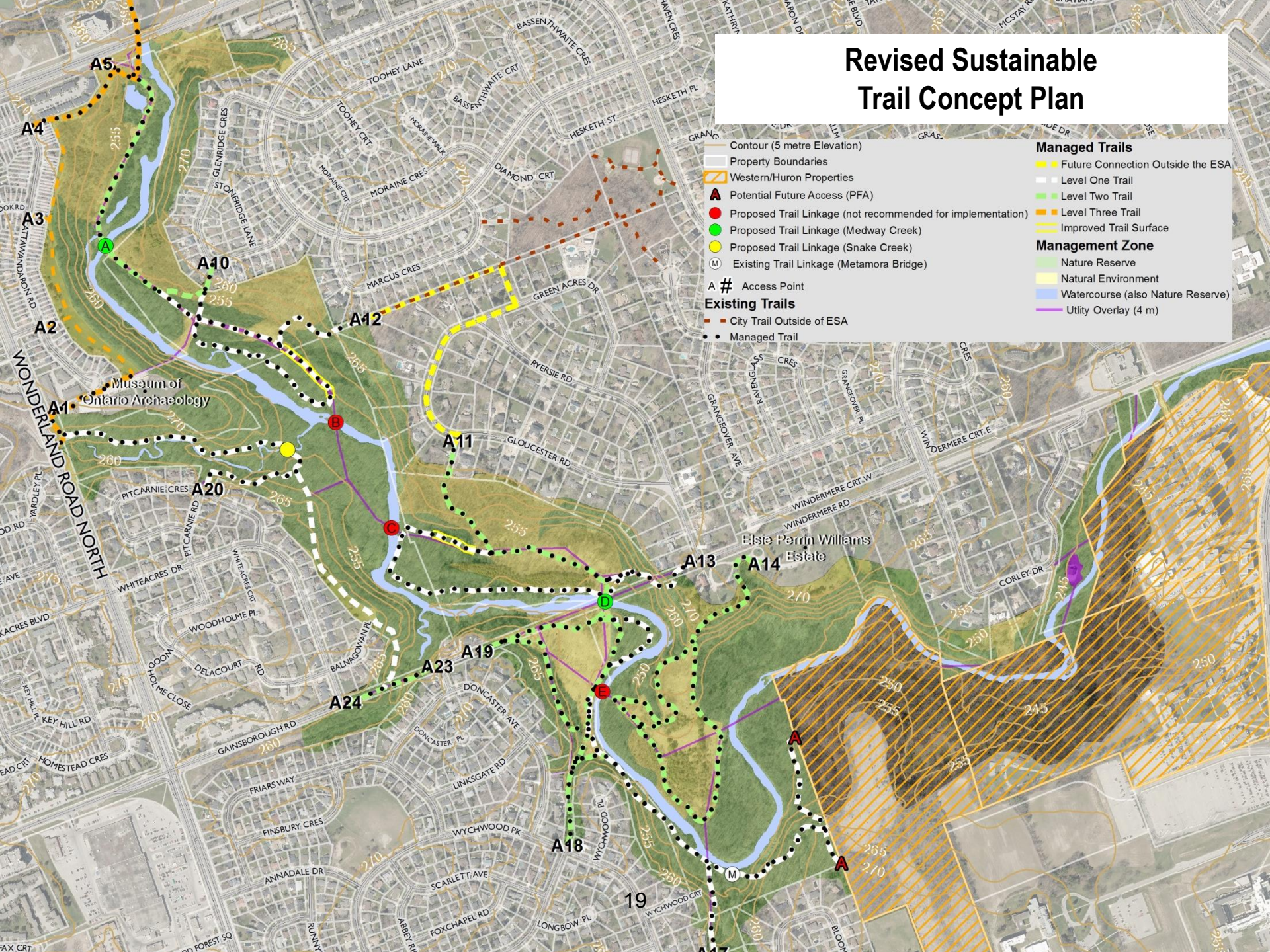
*Additional changes and/or edits have been made in the February 2018 version to further clarify existing conditions and/or other conservation efforts completed to date

Overview of Revisions to Final CMP - Trail Strategy

- Changes were triggered based on the formal response received from ACCAC on January 8, 2018. All changes comply with the Guidelines.
- In order to endorse the MVHF ESA (south) CMP, ACCAC requires the following revisions:
 - Upgrade the trail to Level 2 between A11 to the Medway creek at Linkage “D”, noting the current trail runs primarily along a utility overlay within a Natural Environment zone.
 - Install a bridge at Linkage “D”. This will create an accessible trail from A11 to A18 and A19.
 - Extension of the boardwalk at A18 noting erosion exists, resulting in muddy surfacing and trail-widening (by those attempting to avoid the mud). This trail improvement will maintain the trail as a Level 2 accessible trail.

Note: ACCAC originally requested A13 to Linkage D to be accessible, but as this is within a Nature Reserve zone, an accessible Level 2 trail would not be in accordance with the Guidelines. This demonstrates an “environment first” approach.

Revised Sustainable Trail Concept Plan



<ul style="list-style-type: none"> — Contour (5 metre Elevation) — Property Boundaries ▨ Western/Huron Properties ▲ Potential Future Access (PFA) ● Proposed Trail Linkage (not recommended for implementation) ● Proposed Trail Linkage (Medway Creek) ● Proposed Trail Linkage (Snake Creek) Ⓜ Existing Trail Linkage (Metamora Bridge) A # Access Point Existing Trails — City Trail Outside of ESA ● Managed Trail 	<ul style="list-style-type: none"> Managed Trails ▨ Future Connection Outside the ESA — Level One Trail — Level Two Trail — Level Three Trail ▨ Improved Trail Surface Management Zone ▨ Nature Reserve ▨ Natural Environment ▨ Watercourse (also Nature Reserve) ▨ Utility Overlay (4 m)
---	--

WONDERLAND ROAD NORTH

Museum of Ontario Archaeology

Elsie Perrin Williams Estate

EEPAC (& Nature London) Concerns

A formal response was received from EEPAC on December 21, 2017 expressing concerns with regards to the CMP.

EEPAC's Recommendations:

- *"We recommend, based on a serious risk to the ecological integrity and biodiversity of the MVHF ESA, that the council reject any CMP that includes hardening of trails or bridge crossings of the Medway Creek."*
 - A Nature London Conservation Action Alert was distributed to members in early February citing that recommendations in the CMP for bridges and upgraded trails would have negative impacts on the populations of False Rue-anemone
- *"We recommend council encourage staff to focus the CMP more on protecting the ecological integrity of the MVHF ESA and less on recreational use in a revised CMP."*
- *"...we encourage the council and staff to see a secondary goal as an opportunity for this ESA to become a renowned demonstration site of best practices for the protection of ecological integrity, diversity and species at risk within an urban area."*



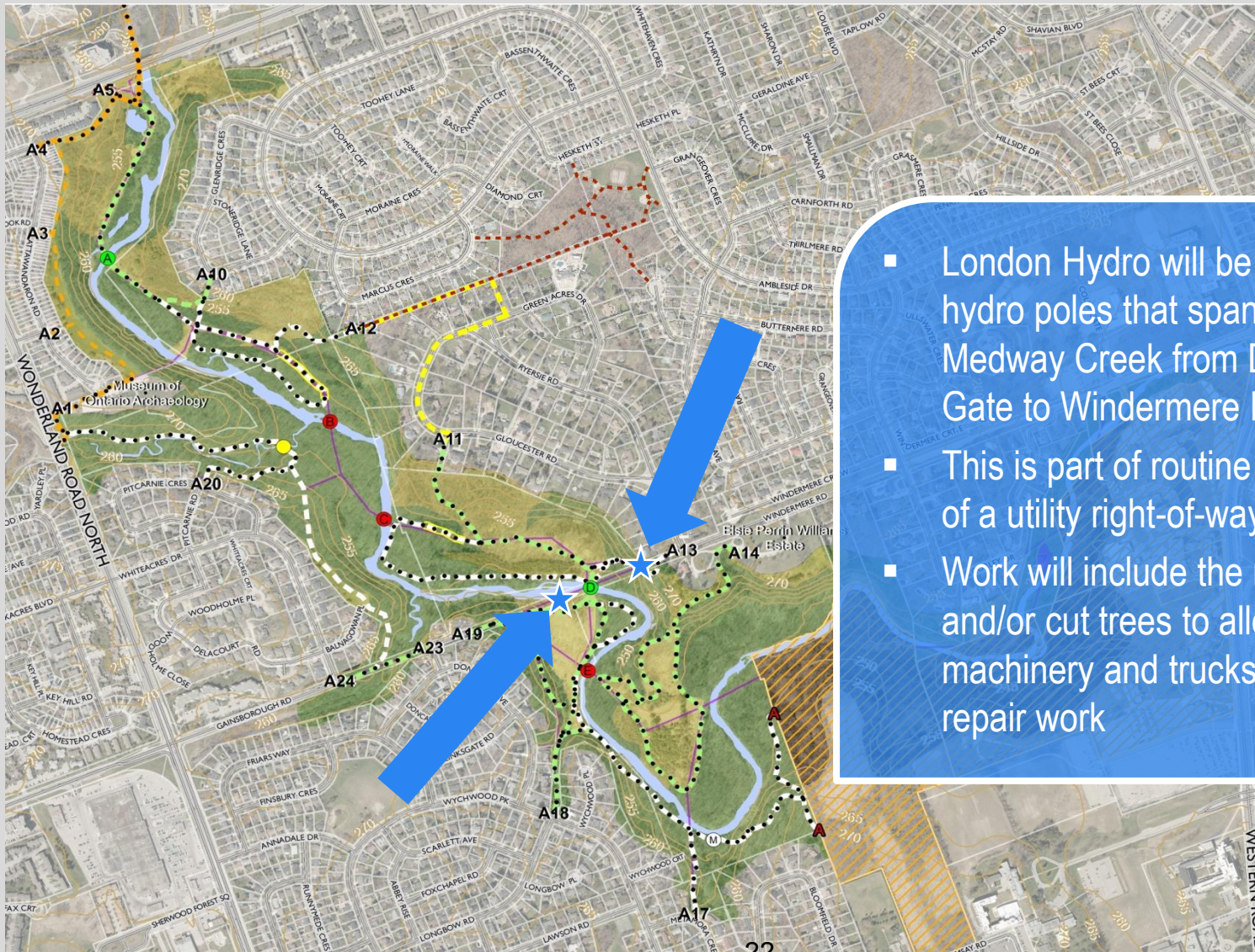
Response to EEPAC Concerns

Use of ESA, “Hardening of Trails”

- Trail management recommendations are provided as a means to manage public use of ESAs through sustainable trail planning and ongoing monitoring and restoration work.
- The recommendations for trails and bridges provided in the CMP are in compliance with the Guidelines, as endorsed by ACCAC, EEPAC and Nature London.
 - Proposed accessible Level 2 trails are in Natural Environment zones and primarily over existing utilities (sewer lines)



Maintenance of Utilities within the ESA



- London Hydro will be repairing two hydro poles that span across Medway Creek from Doncaster Gate to Windermere Road
- This is part of routine maintenance of a utility right-of-way
- Work will include the need to trim and/or cut trees to allow access for machinery and trucks to do this repair work

Response to EEPAC Concerns

Bridges over Medway Creek

- Design criteria for bridges:
 - Span the creek and minimize footprint in riparian zone (i.e., no in-water work).
 - Minimize the footprint of the bridge structure approach embankments
 - Allow relief flow generated by the Regulatory 1:250-year event to go around the bridge within the wider floodplain
- Pedestrian bridge structures would be designed and constructed with a load rated for pedestrians only.



Bridge over Medway Creek (north)

Legend



MVHF ESA (north) – bridge area circa 2014

Google earth



Legend

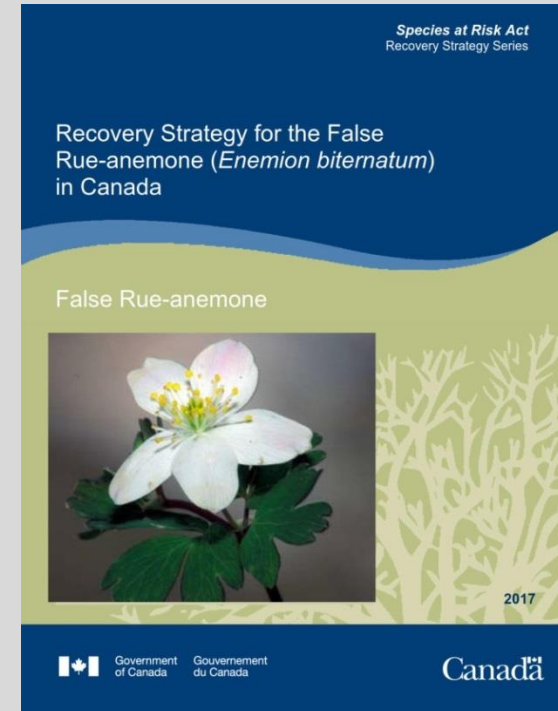
MVHF ESA (north) – bridge area circa 2016

Google earth

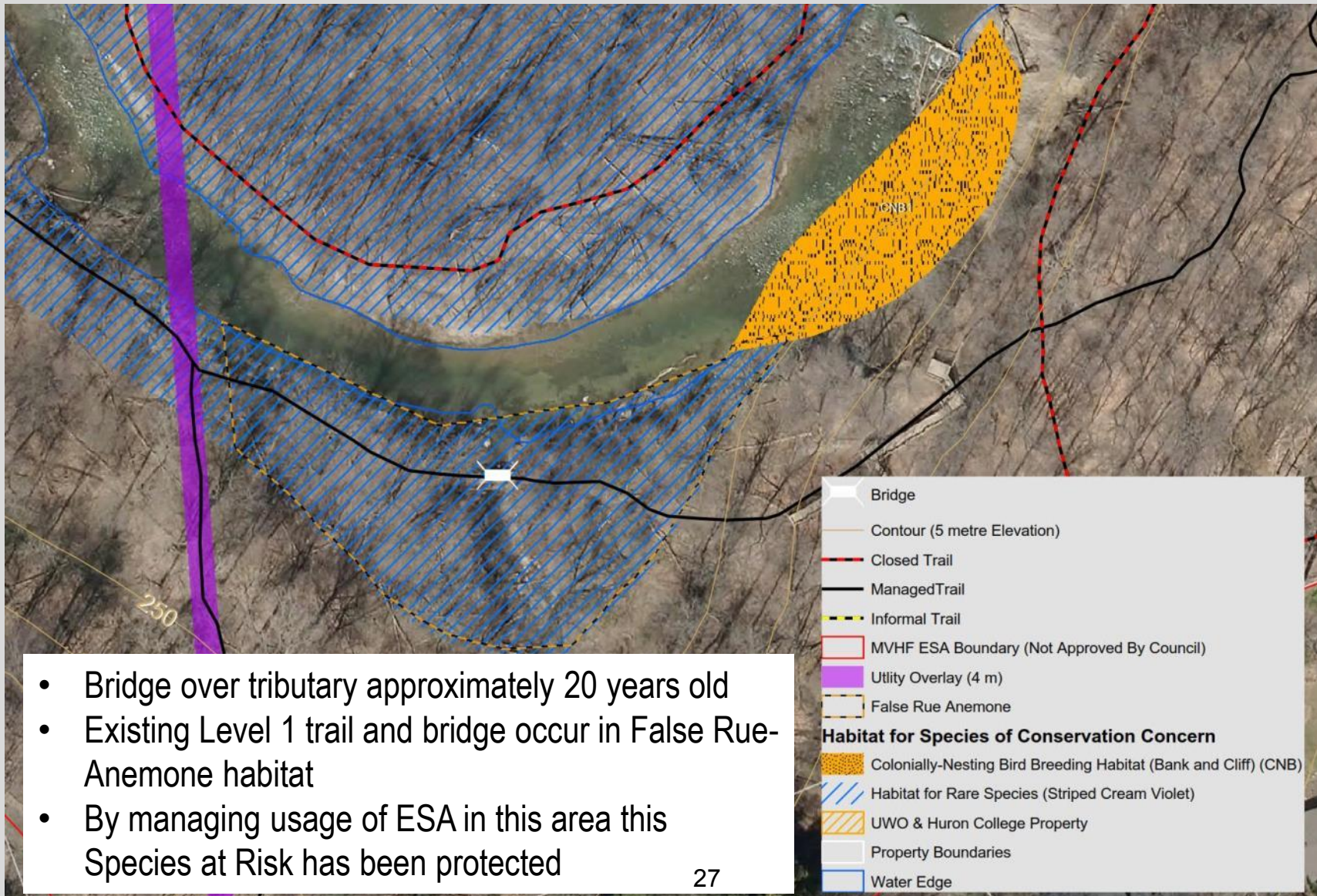
Response to EEPAC (& Nature London) Concerns

False Rue-anemone

- Populations of sensitive species have continued to persist though pressured by invasive species (which are being controlled for).
- 5,435 m of unmanaged/informal trails are proposed to be closed and restored. **Approximately 725 m overlaps False Rue-anemone habitat.**
- Recovery Strategy for the False Rue-anemone (*Enemion biternatum*) in Canada (2017) clearly states as well “Off-trail recreation and trail use” is a threat to this sensitive species if populations undergo trampling and soil compaction.”
 - Off-trail recreation goes on to refer primarily to ATV use, but also refers to inadvertent trampling and resulting soil compaction.
- Recommendations provided in CMP to help encourage users to remain on official trails through use of barriers, upgraded trail surfaces and signage. This is consistent with the federal Recovery Strategy.
- Measures to encourage users to remain on trails and divert users to areas away from the core habitat of sensitive species helps to mitigate the potential for inadvertent trampling
 - **Recovery strategy cites that activities restricted to the surface of recreational trails would not result in the destruction of critical habitat.**



Existing Bridge and Trail near Metamora Protects False Rue-Anemone Habitat



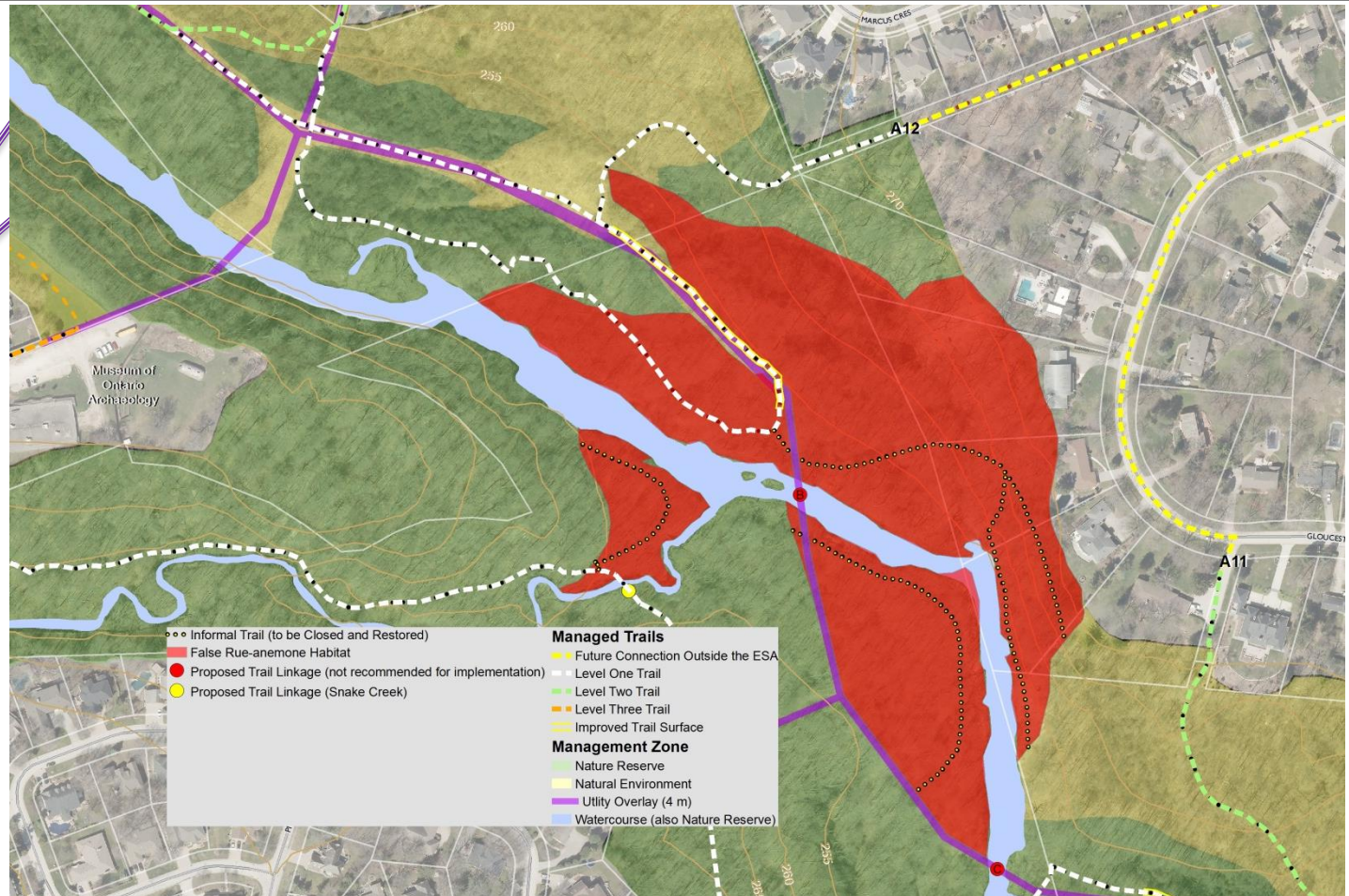
- Bridge over tributary approximately 20 years old
- Existing Level 1 trail and bridge occur in False Rue-Anemone habitat
- By managing usage of ESA in this area this Species at Risk has been protected

Ongoing Protection of Sensitive Features

Level 1 Trail Loop South of A10 and West of A12



Example of a barricade

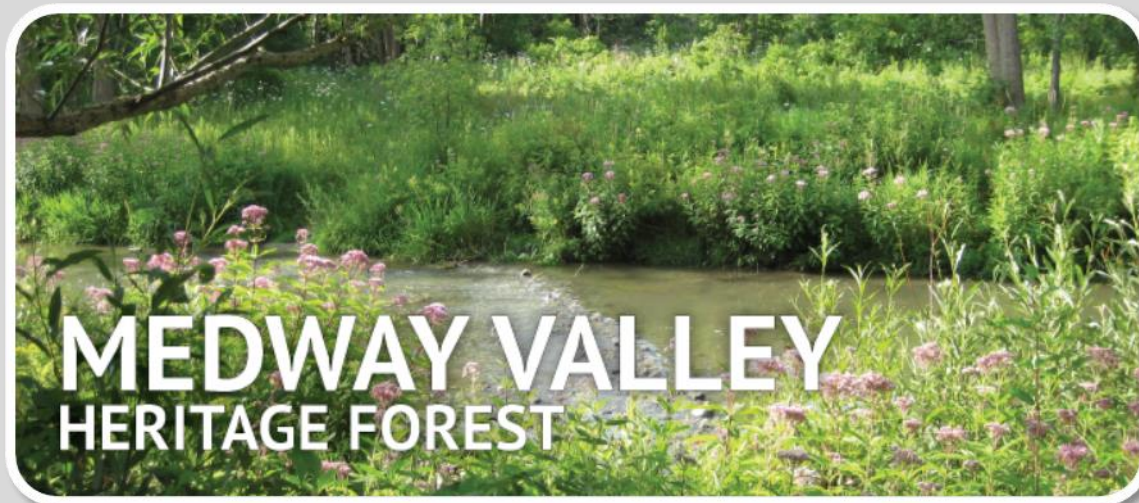


- ✓ Barricade / Corral at transition from Level 2 to Level 1 Trail Type as per Guidelines
- ✓ Educational / Regulatory Signage on Corral:
 - How to protect Significant Features
 - Why Stay on Trail / Keep Dogs on Leash
 - Use Trail at Own Risk / Not AODA compliant
- ✓ Same signage/species Metamora A17, A18
- ✓ Level 1 Trail Loop use *may go down*

- No access to Level 1 Loop from A11 & A13
- Level 2 trail will draw people north to drier, accessible, longer trail
- ✓ If use goes up, compliance with rules goes up (CPTED)
- ✓ Use and health of sensitive species continue to be monitored
- ✓ **Biggest threat is invasive species, which has been addressed**

Next steps

- The changes made to the February 2018 version of the CMP, and reviewed here, comply with the Guidelines, which incorporate the regulations under the AODA.
- The CMP will be distributed to the LAC and posted on the City's website
 - Target date is Wednesday, March 7, 2018
- The February 2018 version of the CMP will be presented to the Planning and Environment Committee (PEC)
 - Target date is March 19, 2018



Stance of The Accessibility Advisory Committee

The Accessibility Advisory Committee does not support the proposed “Conservation Master Plan Phase II; Medway Forest ESA (South)”. The proposed upgrades to accessibility are superficial; inconsistent with assurances made to ACCAC in the past; inconsistent with legislation (and the spirit of the legislation); and fall significantly short in providing equitable, quality access to the valley for all Londoners, regardless of ability. As noted below, ACCAC is supportive of some proposed changes, and could support the plan with two additional amendments.

Background

When the original Trails Standards document [subsequently revised and replaced with the Guidelines for Management Zones & Trails in Environmentally Significant Areas (2016)], the Accessibility Advisory Committee was provided reassurances that, “whenever possible” trail systems would be made/upgraded to be accessible. Since the adoption of the original standards, this promise has been largely unmet. There are currently unfinished ‘accessible’ trails, non-compliant boardwalks and other structures, inadequate signage, incomplete accessible loops (meaning the user must return along the same path they already walked), among other concerns. Although ACCAC acknowledges the City’s efforts and intentions to continue to work on these areas of concern, the Medway Valley South CMP is an opportunity to ensure accessibility is considered and implemented fully at the onset, not in retrospect.

Proposal

The Accessibility Advisory Committee recognizes some enhancements to accessibility were included in the proposal. ACCAC is in support of the following proposed changes:

- Bridge at crossing A and Level 2 trail from A5 to A10– as these enhancements will provide an accessible path thorough the northern most portion of the valley, connecting the Ambleside community to the Medway Valley North Accessible path system. ACCAC does however note this trail provides little regarding access to the actual valley. At virtually all points along this path development is clearly visible to the North, East and West, thus no ‘nature experience’ for Londoners requiring accessibility.
- Level 3 trail from A1 to A4 – as this enhancement will create an accessible connection of Medway Valley North, as well as those areas served by the proposed A5 to A10 route
- Trail surface improvements (such as those near A11 and A12) being completed to AODA standards

- 2 closed level 2 trail loops beginning at A19 and A14 - as these provide a limited degree of trail/nature experience, however noting this provides no route options, and limit path of travel to one route with a single entrance/egress point.

During discussions with City staff the Accessibility Advisory Committee was informed the existing proposal contained an error which directly impacts accessibility. The proposal identifies access point A18 as a Level 1 Trail. This is inconsistent with its existing usage and maintenance (contains an existing boardwalk). ACCAC was advised the portion of trail from A18 to the proposed Level 2 trail loop from A19 should be a level 2 Trail. On a walk through, ACCAC noted significant erosion and trail widening outside the segment of trail containing the boardwalk.

Accessibility Advisory Committee Proposed Enhancements

The Accessibility Advisory Committee proposes 3 additional enhancements which would significantly improve accessibility within Medway Valley South while posing no risk to the environment.

- Upgrade the trail from A11 to the Medway creek at point D, noting this trail runs primarily along a utility overlay
- Install a Bridge at crossing D
- Extension of the boardwalk at A18 noting significant erosion exists, resulting in muddy surfacing and trail-widening (by those attempting to avoid the mud).

Rationale

The combination of the upgrade to trail at A11 to Medway creek, and the bridge at crossing D will provide a connection between the proposed level 2 trail at A19 and the Ambleside community. Individuals can then follow existing roadways and park path to connect to the proposed accessible route (A5-A10). This pair of enhancement would mean the valley would now have 10 of the identified 24 access points connected through a single accessible path (plus one additional accessible point at A14). This also serves to connect to the accessible trail system in Medway Valley North. This pair of enhancements would make the trail system through Medway Valley the longest accessible nature trail available throughout the City of London.

Although these enhancements still require the user to exist from the valley and re-enter at a later access point (A10 to A11), this is consistent with all users as the existing informal trail from A12 to A11 is being closed.

These enhancements would mean Londoners requiring accessible trails could have an experience through the valley comparable to that of all Londoners.

The formalized bridge crossing at D also eliminates the need for 'impromptu' bridges or crossings being 'built' by persons in the valley. Thus, the accessibility enhancements also serve to reduce environmental impact in other sensitive areas, and reduce risk to the city and all Londoners (e.g. injuries to those using the impromptu crossings).

ACCAC would also like to reiterate the principal of trail development and maintenance... a well developed and maintained trail is best for the environment around it.

Legislation, Laws, Guidelines and Standards

The proposal, as outlined in this submission by the Accessibility Advisory Committee is in adherence with all accessibility, human rights, and environmental legislation, acts, laws, studies, recommendations, Standards and/or Guidelines, at the municipal, provincial, federal, and international levels; including:

- Council approved Guidelines for Management Zones & Trails in Environmentally Significant Areas (2016)
- The Official Plan (The London Plan)
- Ontario Human Rights Code
- Accessibility for Ontarians with Disabilities Act (AODA)
- City of London's Facility Accessibility Design standards (FADS)
- United Nations' Convention on the Rights of Persons with Disabilities
- Ontario *Endangered Species Act, 2007*;
- Pull any referenced environmental legislation to this list
- Natural Heritage Inventory and Evaluation; Medway Valley Heritage Forest ESA (Dillon Consulting, January 2015)
- Recovery Strategy for the False Rue-anemone in Canada, 2016
- Upper Thames River Source Protection Area Amended Proposed Assessment Report (August 2011)
- Medway Creek Community-based Enhancement Strategy (Friends of Medway Creek and UTRCA, 2009)
- Guideline Document for the Evaluation of Ecologically Significant Woodlands (City of London, 2006)
- Middlesex Natural Heritage Study (UTRCA, 2003)
- The City of London Sub-Watershed Studies Implementation Plan (City of London, 1995)
- 2012 Upper Thames River Watershed Report Cards (Upper Thames River Watershed Report Card)
- Species at Risk Act (2002)
- City of London Environmental Management Guidelines (2007)
- Medway Creek Community-Based Enhancement Strategy (2009); and
- Any, and all further legislation, acts, laws, studies, recommendations, Standards and/or Guidelines referenced throughout the Medway Valley South Phase II Conservation Master Plan development process.

Summary

Important to note, the proposal put forth by ACCAC is consistent with all legislation and guidelines used by the City of London and honours commitments made to the accessibility community. The additional enhancements included in this proposal do not require any paving or asphalt surfacing. The enhancements requested simply ensure firm, stable ground (which *could* include asphalt *if* the city and the trails advisory committee felt it were the most feasible option. The ACCAC proposal calls for limited additional development, i) extension of the board walk at A18, and ii) a bridge at connection point D; noting this point of connection is the only place along the river that can be accessed from both sides without risking environmental damage.

The proposed additional enhancements provides Londoners requiring accessible paths with the largest, most comprehensive, comparable and equitable trail experience anywhere in London. These enhancements further connect accessible pathways (outside the valley), Medway Valley North; and the communities of Sunningdale and Ambleside, through one continuous accessible trail/pathway system.

ACCAC further calls on the City to ensure adequate funding is budgeted to complete the proposed upgrades.

Finally, in recognition of concerns this proposed plan *could* result in increased pedestrian traffic through the valley, ACCAC supports any call for additional enforcement of municipal bylaws, monitoring of environmental impacts, and any calls for funding necessary to achieve these objectives.

Medway Valley Heritage Forest (South) ESA Conservation Master Plan 2017

EEPACs Recommendations

As EEPAC's representative on the LAC, and one of the EEPAC reviewers of the MVHF ESA CMP, I am seeking input and support from EEPAC to present a statement from EEPAC to PEC. I am requesting consideration of the following statement and recommendations for presentation from EEPAC to PEC.

Statement

EEPAC does not support the MVHF (South) ESA CMP because the CMP is counter to the current city plan. The CMP fails to adequately protect the long-term ecological function and biodiversity of the area. See City's current Official Plan's statement concerning the use of natural heritage features:

15.1.1 (v) Maintain, restore, and improve the diversity and connectivity of natural features, and the long-term ecological function with biodiversity of natural heritage systems.

In particular, the "upgrading" or hardening of trails on either side of crossing A (figure 5) and the trail that runs parallel to Attawandaron Road in the proposed area of naturalization (NAS in Figure 2) and the construction of the bridge crossing the Medway Creek at A (Figure 5) put at risk the ecological integrity of this ESA.

We support and encourage even greater efforts to close informal trails, improve signage to better educate the public about the ESA and trail closures, restore natural habitat to protect species at risk, and naturalize some areas. We also support the stepping stone crossing at Snake Creek (C) because it should reduce erosion at this site.

Recommendations

1. We recommend, based on a serious risk to the ecological integrity and biodiversity of the MVHF ESA, that the council reject any CMP that includes hardening of trails or bridge crossings of the Medway Creek.
2. We recommend council encourage staff to focus the CMP more on protecting the ecological integrity of the MVHF ESA and less on recreational use in a revised CMP. There should be better development of more detailed plans for monitoring, trail closures and education in a revised CMP in order that EEPAC and others can accurately assess those plans.
3. We recommend that the council encourage staff to rethink the MVHF ESA CMP. This is a small, but unique and incredibly diverse environment that has been, to date, preserved within an urban center. Instead of focusing on increasing recreational use of the area, we encourage the council and staff to see a secondary goal as an opportunity for this ESA to become a renowned demonstration site of best practises for the protection of ecological integrity, diversity and species at risk within an urban area.

Financial Statement Information

Financial Statement Information

The following information is provided for the financial statements of the Company for the period ended December 31, 2017. The information is presented in the same format as the financial statements of the Company.

Balance Sheet

The following table presents the balance sheet information for the Company for the period ended December 31, 2017. The information is presented in the same format as the balance sheet of the Company.

The following table presents the balance sheet information for the Company for the period ended December 31, 2017. The information is presented in the same format as the balance sheet of the Company.

The following table presents the balance sheet information for the Company for the period ended December 31, 2017. The information is presented in the same format as the balance sheet of the Company.

The following table presents the balance sheet information for the Company for the period ended December 31, 2017. The information is presented in the same format as the balance sheet of the Company.

Income Statement

The following table presents the income statement information for the Company for the period ended December 31, 2017. The information is presented in the same format as the income statement of the Company.

The following table presents the income statement information for the Company for the period ended December 31, 2017. The information is presented in the same format as the income statement of the Company.

The following table presents the income statement information for the Company for the period ended December 31, 2017. The information is presented in the same format as the income statement of the Company.

The following table presents the income statement information for the Company for the period ended December 31, 2017. The information is presented in the same format as the income statement of the Company.

NATURE LONDON

CONSERVATION ACTION ALERT!

Medway Valley Heritage Forest Environmentally Significant Area (ESA)

Since 2013, the City of London has been preparing a Conservation Master Plan (CMP) for the southern portion of the Medway Valley ESA. This process is rapidly nearing a conclusion. The final draft of the CMP contains proposals which, in the view of Nature London's Conservation Action Committee (CAC), threaten the ecological integrity of this jewel of London's natural heritage. The latest draft may be seen at (the final report will not be available until Feb 14th.

https://www.london.ca/residents/Environment/Natural-Environments/Documents/MVHF_ESA_south_PhII.pdf

The CMP will be presented to the Planning and Environment Committee (PEC) of Council at a public participation meeting at City Hall on February 20, beginning not before 5:15 p.m.

Your help is needed! Here's why.

Specifically, the draft recommends construction of a bridge over Medway Creek south of Fanshawe Park Road. Given the physical requirements of the proposed site, this bridge likely would be a large 10-15 m long bridge like those north of Fanshawe to Sunningdale Road. (There are currently no crossings of the Medway in the southern portion of the ESA). The draft also recommends creating 800 m of paved or asphalt surface paths in place of the natural hiking trails leading to the creek from near Fanshawe Park Road and from the Creek to Glenridge Crescent on the east. The fundamental purpose of an ESA is to protect the ecological integrity of areas of the City designated for their special qualities. There is, however, no ecological justification for the proposed bridge and pathway construction. City policy clearly makes recreation secondary to environmental protection in its ESAs.

Other parts of the draft CMP contain valuable recommendations for naturalization, invasive species management, and monitoring, but these are not accompanied by spending commitments. Therefore, the Conservation Action Committee recommends that Council defer approval of the revised CMP (once the bridge and trail construction proposals have been removed) until funding commitments can be made as part of the City's 4-year budget process.

The bridge and trail construction proposals are especially alarming because they could have a negative impact on a spring flower, False Rue-anemone, which is designated as Threatened by both the Provincial and Federal governments. The largest population in Canada of this beautiful white flower, a flood-plain specialist, is located in the Medway and would be subject to a greater risk of trampling. The City has devoted considerable effort and expense to protecting False Rue-anemone from invasive Goutweed, but the proposed bridge and trail construction will bring greatly increased foot, dogs off leash and, potentially, bicycle traffic into precisely the habitat of this population. Consequently, conservation-minded members of the Local Advisory Committee for the CMP have recommended to Council that these objectionable proposals be deleted from the final CMP.

Here's what you can do to help:

- Contact your City Councillor and ask for the CMP to be modified, by removing the bridge and trail construction proposals from the plan and deferring acceptance of the rest until funding is confirmed through the 4 year budget (see email addresses below).
- Submit a letter to pec@london.ca not later than Feb 12, to be placed on the PEC agenda.
- Attend the public participation meeting on February 20 and speak in support of these CAC recommendations for modification to the draft CMP.
- Just attend the public participation meeting to show your support for conservation.
- Contact other conservation minded friends to do the same.

Thank you for your support of protecting one of London's Environmentally Significant Areas.

Councillor e-mails

mayor@london.ca, mvanholst@london.ca, barmstro@london.ca, msalih@london.ca,
jhelmer@london.ca, mcassidy@london.ca, psquire@london.ca, joshmorgan@london.ca,
phubert@london.ca, ahopkins@london.ca, vridley@london.ca, sturner@london.ca, husher@london.ca,
tpark@london.ca, jzaifman@london.ca



Photo by Keith Zerebecki, Friends of Medway Creek

UPDATE

HABITAT PROTECTION, RESTORATION & STEWARDSHIP

MEDWAY VALLEY HERITAGE FOREST ENVIRONMENTALLY SIGNIFICANT AREA

City of London - Habitat Protection, Restoration & Stewardship Initiatives 2017-2018

1. The City, Dillon Consulting and UTRCA recognized for their innovative invasive species management, habitat protection and contributions to the Federal Recovery Strategy for the False Rue-anemone (*Enemion biternatum*) in Canada (2016).
2. The Draft Conservation Master Plan Phase 2 MVHF ESA (South) identifies that all Top and High (and some Moderate and Low) priority restoration work is underway, completed and/or under a monitoring program.
3. Phragmites, Japanese Knotweed, Buckthorn, Scots Pine, Goutweed, Garlic Mustard, Purple Loosestrife and Periwinkle are monitored and managed annually.
4. 2017 London Community Foundation funded additional invasive species control and native tree planting in MVHF ESA south.
5. The City received provincial awards from Ontario Nature and the OALA for demonstrating community leadership and exceptional achievement in planning and implementing programs that protect and regenerate the natural environment.
6. Butternut Habitat Stewardship Protection SAR Federal Grant and study underway.
7. Three groups have adopted portions of the ESA through City's Adopt an ESA program.
8. The Friends of Medway Creek (FOMC) proposal for interpretive ESA signs and benches were winners in the Medway Decides City funded program.
9. City and FOMC community tree planting, fish demonstrations held in 2016, 2017.
10. London is first in Ontario to draft a City-wide Invasive Plant Management Strategy with support from the Ontario Invasive Plant Council.
11. The City's London Phragmites Working Group is developing London's Phragmites Management Strategy the largest initiative in the Great Lakes Basin, with Ontario's Phragmites expert Dr. Janice Gilbert.
12. City is an identified leader among Ontario municipalities and other levels of government in the management of invasive species in protected natural areas since 2007.

For more information on habitat protection, restoration and stewardship initiatives and opportunities, please contact the City of London Environmental & Parks Planning Section.

CONTACT

Ecologist, Linda McDougall
519-661-2489 ext. 6494
lmcDoug@london.ca

Visit our website: www.london.ca/ESA

UPPER THAMES RIVER
CONSERVATION AUTHORITY



MEDWAY VALLEY HERITAGE FOREST ENVIRONMENTALLY SIGNIFICANT AREA

ESAs to inform the National Heritage Act 1980 (as amended) (NHAA) 1980

- 1. The area is a landscape of high natural beauty, and is of great importance to the local community.
- 2. The area is a landscape of high natural beauty, and is of great importance to the local community.
- 3. The area is a landscape of high natural beauty, and is of great importance to the local community.
- 4. The area is a landscape of high natural beauty, and is of great importance to the local community.
- 5. The area is a landscape of high natural beauty, and is of great importance to the local community.
- 6. The area is a landscape of high natural beauty, and is of great importance to the local community.
- 7. The area is a landscape of high natural beauty, and is of great importance to the local community.
- 8. The area is a landscape of high natural beauty, and is of great importance to the local community.
- 9. The area is a landscape of high natural beauty, and is of great importance to the local community.
- 10. The area is a landscape of high natural beauty, and is of great importance to the local community.
- 11. The area is a landscape of high natural beauty, and is of great importance to the local community.
- 12. The area is a landscape of high natural beauty, and is of great importance to the local community.
- 13. The area is a landscape of high natural beauty, and is of great importance to the local community.
- 14. The area is a landscape of high natural beauty, and is of great importance to the local community.
- 15. The area is a landscape of high natural beauty, and is of great importance to the local community.
- 16. The area is a landscape of high natural beauty, and is of great importance to the local community.
- 17. The area is a landscape of high natural beauty, and is of great importance to the local community.
- 18. The area is a landscape of high natural beauty, and is of great importance to the local community.
- 19. The area is a landscape of high natural beauty, and is of great importance to the local community.
- 20. The area is a landscape of high natural beauty, and is of great importance to the local community.



2ND REPORT OF THE
ACCESSIBILITY ADVISORY COMMITTEE

Meeting held on February 22, 2018, commencing at 3:04 PM, in Committee Room #4, Second Floor, London City Hall.

PRESENT: J. Madden (Chair), M. Cairns, L. Chappell, M. Dawthorne, A. Forrest, N. Judges, P. Moore, K. Ramer and P. Quesnel and J. Bunn (Secretary).

ABSENT: J. Higgins, J. Menard, K. Schmidt and F. Simmons.

ALSO PRESENT: C. Da Silva, J. Davison and K. Husain.

I. CALL TO ORDER

1. Disclosures of Pecuniary Interest

That it BE NOTED that no pecuniary interests were disclosed.

II. SCHEDULED ITEMS

2. Accessibility Advisory Committee Orientation

That it BE NOTED that the attached presentations from C. Da Silva, Specialist I, Municipal Policy (AODA) and M. Dawthorne, Vice-Chair, Accessibility Advisory Committee (ACCAC), with respect to ACCAC Orientation for new members were received; it being noted that a verbal delegation from J. Bunn, Committee Secretary, was heard related to this matter.

III. SUB-COMMITTEES & WORKING GROUPS

3. Policy Sub-Committee Report

That it BE NOTED that the Accessibility Advisory Committee approved the creation of a "Deferred Matters List" to be included on every agenda and updated with matters that require follow-up.

IV. CONSENT ITEMS

4. 1st Report of the Accessibility Advisory Committee

That it BE NOTED that the 1st Report of the Accessibility Advisory Committee, from its meeting held on January 25, 2018, was received.

5. RESIGNATION - Accessibility Advisory Committee - J. Sanders

That it BE NOTED that the letter of resignation dated January 25, 2018, from J. Sanders, was received.

6. Municipal Council Resolution - Appointment to the Accessibility Advisory Committee

That it BE NOTED that the Municipal Council resolution from its meeting held on February 13, 2018, with respect to the appointment of P. Quesnel to the Accessibility Advisory Committee, was received.

7. Laurentian University School of the Environment, Class ENVI 2546 – FADS

That it BE NOTED that a communication dated February 6, 2018, from T. Wellhauser, Division Manager, Facilities, with respect to the adoption of the City of London 2007 Facility Accessibility Design Standards (FADS) by the Laurentian University School of the Environment, Class ENVI 2546, was received.

8. Confederation College - FADS

That it BE NOTED that a communication dated February 6, 2018, from T. Wellhauser, Division Manager, Facilities, with respect to the adoption of the City of London 2007 Facility Accessibility Design Standards (FADS) by Confederation College, was received.

V. ITEMS FOR DISCUSSION

9. ACCAC Delegations at Community and Protective Services Committee

That it BE NOTED that the Accessibility Advisory Committee held a general discussion related to the approved delegations before the Community and Protective Services Committee, related to Community Gardens and the Mayor's New Year's Honour List.

10. Volunteer from ACCAC for Candidate Information Session on April 7, 2018

That it BE NOTED that A. Forrest, M. Cairns and K. Husain will attend as Accessibility Advisory Committee volunteers at the Candidate Information Session to be held on April 7, 2018.

11. ACCAC Work Plan

That the ~~attached~~ 2017 Accessibility Advisory Committee (ACCAC) Work Plan Summary BE FORWARDED to the Municipal Council for their information; it being noted that the ACCAC held a general discussion related to the 2018 Work Plan.

VI. DEFERRED MATTERS/ADDITIONAL BUSINESS

None.

VII. ADJOURNMENT

The meeting adjourned at 6:03 PM.

NEXT MEETING DATE: March 22, 2018



London
CANADA

City of London Planning Services

COMMUNITY INFORMATION MEETING

Planning for Supervised Consumption Facilities and Temporary Overdose Prevention Sites

Leif Maitland

Tel: 519-661-2489 ext. 7360 | Fax: 519-661-5397

Email: lmaitlan@london.ca | Website: www.london.ca

WHAT

The City of London is in the process of establishing land use planning policies for Supervised Consumption Facilities and Temporary Overdose Prevention Sites.

This process aims to provide policy and regulations for Supervised Consumption Facilities and Temporary Overdose Prevention Sites which achieve the following goals:

- Plan for facilities in locations that can serve those who will use them
- Plan for facilities to avoid land use conflicts
- Design facilities to avoid stigma and promote safety

As part of the policies, requirements for community engagement in advance of establishing a site would also be established.

On January 30, 2018 Municipal Council directed that staff circulate draft Official Plan policy and Zoning By-law regulations for feedback & input. The regulations are available for review at www.getinvolved.london.ca/SCF

On January 30 Council also adopted a Council Policy to provide interim guidance on Supervised Consumption Facilities and Temporary Overdose Prevention Sites while the final Official Plan and Zoning-by-law amendments are being prepared.

WHERE

Goodwill Industries
255 Horton Street, N6B 1L1

WHEN

Wednesday March 21, 2018
7:00 to 9:00 PM

WHO

Everyone is welcome to attend, please share this notice widely.

NEXT STEPS

This meeting is a community meeting to seek input on the draft policies. A future Notice of Public Meeting will inform you of the statutory public participation meeting, as required under the Planning Act, to be held at the Planning and Environment Committee of Council to be scheduled for April.

HOW TO GIVE COMMENTS

Please call, email, fax, or mail your comments to:
City of London Planning Division
206 Dundas Street, London, ON
N6A 1G7
Attention: Leif Maitland

Please note: This is a community meeting to provide the public with an opportunity to provide feedback and input on land use planning policies and regulations for Supervised Consumption Facilities and Temporary Overdose Prevention Sites.

There will be a future public participation meeting as required under the Planning Act, held at the planning and Environment Committee to be scheduled for April. Notice of this meeting will be provided shortly.

Personal information collected at this meeting is collected under the authority of the Planning Act, R.S.O. 1990, and may be used for the purpose of informing you of future information meetings and statutory public meetings related to this Secondary Plan.



O-8879
Planner: Chuck Parker
Telephone: 519-661-2489 extension 4648
Fax: 519-661-5397
Email: cparker@london.ca
Website: www.london.ca

March 12, 2018

NOTICE OF APPLICATION TO AMEND THE OFFICIAL PLAN

The Municipal Council for the City of London is considering an amendment to the City's Official Plan for the lands shown on the map as attached. The requested change is described below. We are advising you of this application to invite your comments.

APPLICANT:

City of London

LOCATION:

Old East Village - see attached map

PURPOSE AND EFFECT:

The need for an Old East Village Dundas Street Corridor Secondary Plan was identified through discussions on the implementation of the Bus Rapid Transit System. The east-west bus rapid transit route is proposed to run eastward from the Downtown along King Street onto Ontario Street and then eastward along Dundas Street within the study area (see attached Map).

The purpose of the Secondary Plan is to establish a long term vision for the area and guide the future character of development through more specific policies than those contained in the Rapid Transit and Urban Corridors Section of the London Plan. The Secondary Plan can also be used to implement a vision or design concept, specifically, an urban design framework to connect the King Street rapid transit corridor and the Old East Village business district to the north. The Plan will provide a framework for the evaluation of future planning applications and public and private investment in the area.

POSSIBLE AMENDMENT:

Possible amendments to Sections 20.2 and 20.3 and Schedule D of the existing Official Plan and Policy 1565 and Map 7 of the London Plan to add the Old East Village Dundas Street Corridor Secondary Plan as a new Secondary Plan.

PLANNING POLICIES:

The lands have various designations in the Existing Official Plan. These include Main Street Commercial Corridor, Regional Facility, Community Facility, Office Residential, Multi-Family High Density Residential and Multi-Family Medium Density Residential (refer to the Official Plan for specific uses and policies).

The subject lands are in the Rapid Transit Corridor Place Type in *The London Plan* (Council-adopted June 13, 2016 and Ministry approved December 28, 2016). The London Plan designates lands on either side of this corridor as a Rapid Transit Corridor which envisions medium density, mid-rise, mixed use development.

HOW TO COMMENT:

Your opinion on this application is important. Please call in, mail, e-mail or fax your comments to The City of London Planning Services, P.O. Box 5035, London, ON, N6A 4L9, Attention Chuck Parker **by June 30, 2018**, if possible. There will also be community meetings, information sessions and further notifications as well as a part of the Secondary Plan preparation process. A webpage will be created on the City's website (www.london.ca) for the project which will include all relevant material related to the project.

Please Note: Personal information collected and recorded at the Public Participation Meeting, or through written submissions on this subject, is collected under the authority of the Municipal Act, 2001, as amended, and the Planning Act, 1990 R.S.O. 1990, c.P.13 and will be used by Members of Council and City of London staff in their consideration of this matter. The written submissions, including names and contact information and the associated reports arising from the public participation process, will be made available to the public, including publishing on the City's website. Video recordings of the Public Participation Meeting may also be posted to the City of London's website. Questions about this collection should be referred to Cathy Saunders, City Clerk, 519-661-2489 extension 4937. Please ensure you refer to the file number or municipal address of the item on which you are commenting.

If a person or public body does not make oral or written submissions at a public meeting or make written submissions to the City of London before the proposed amendment is adopted, the person or public body may not be entitled to appeal the decision of the Council of the City of London to the Ontario Municipal Board, or may not be added by the Board as a party to the hearing of an appeal unless, in the opinion of the Board, there are reasonable grounds to do so.

A neighbourhood or community association may exist in your area. If it reflects your views on this proposal, you may wish to select a representative of the association to submit comments on your behalf.

Your representatives on City Council, Ward 4 and 13 Councillors Jesse Helmer (Office -519 - 661-2489 Ext. 4004 or jhelmer@london.ca) and Tanya Park (Office-519-661-2489 Ext. 4013 or tpark@london.ca), respectively, would be pleased to discuss any concerns you may have with this application.

PUBLIC MEETING:

A Draft Terms of Reference will be presented to Planning and Environment Committee on April 3, 2018 to start the Secondary Plan process. The Plan process information will be provided on the City's website at www.london.ca.

The appropriateness of the Official Plan amendment will be considered at a future meeting of the Planning & Environment Committee. You will receive another notice inviting you to attend this meeting.

If a person or public body does not make oral or written submissions at a public meeting or make written submissions to the City of London before the proposed amendment is adopted, the person or public body may not be entitled to appeal the decision of the Council of the City of London to the Ontario Municipal Board, or may not be added by the Board as a party to the hearing of an appeal unless, in the opinion of the Board, there are reasonable grounds to do so.

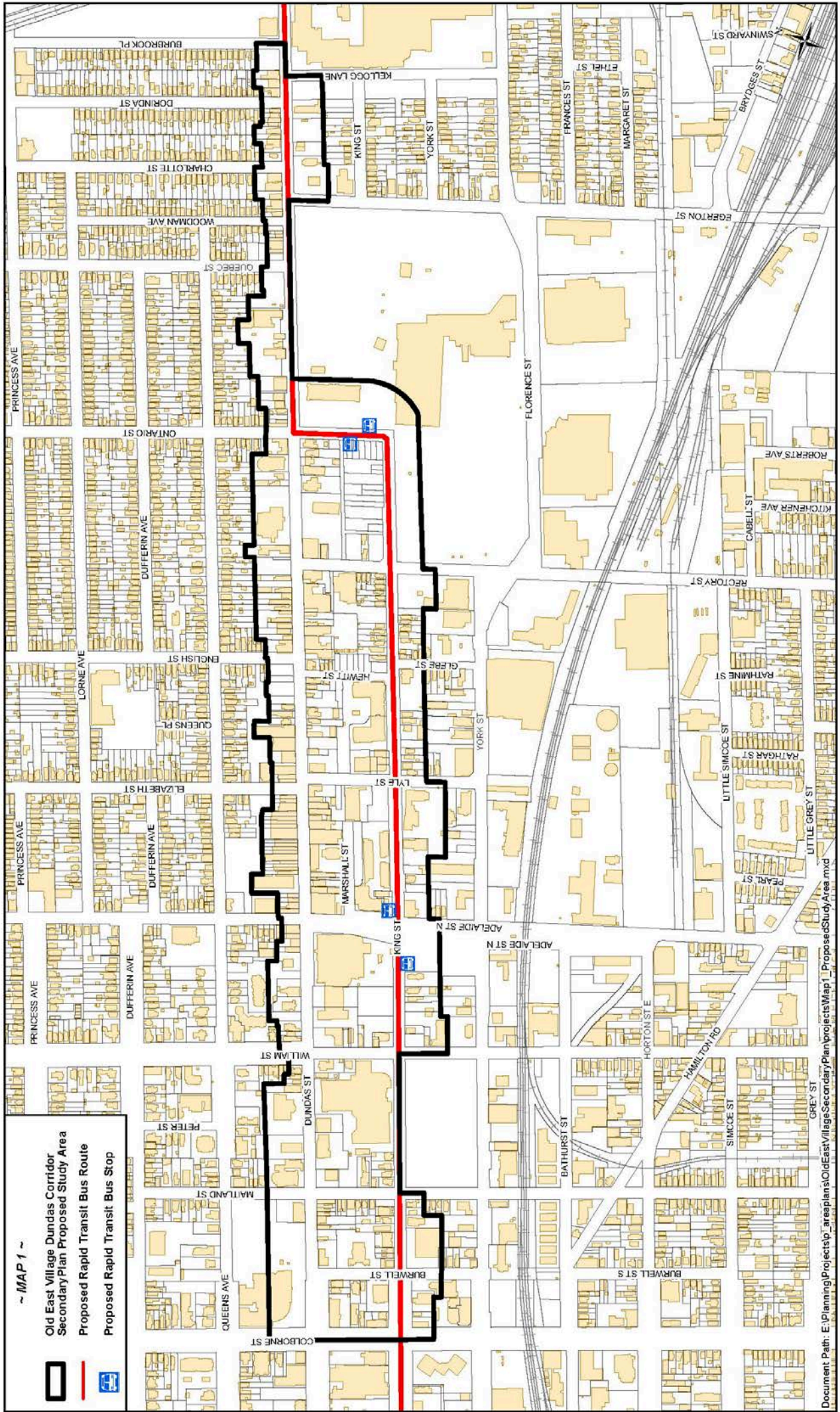
FOR INFORMATION:

If you wish to view additional information or material about the Official Plan amendment, it is available to the public for inspection at Planning Services, 206 Dundas St., London, ON, Monday to Friday, 8:30a.m.-4:30p.m.

For more information, please call Chuck Parker at 519-661-2489 extension 4648, referring to “O-8879”.

TO BE NOTIFIED:

If you wish to be notified of the adoption or refusal of an Official Plan amendment, you must make a written request to the City Clerk, 300 Dufferin Avenue, P.O. Box 5035, London, ON N6A 4L9. You will also be notified if you address the Planning & Environment Committee at the public meeting about this application and leave your name and address with the Secretary of the Committee.





P.O. Box 5035
300 Dufferin Avenue
London, ON
N6A 4L9

London
CANADA

March 7, 2018

Chair and Members
Accessibility Advisory Committee

I hereby certify that the Municipal Council, at its meeting held on March 6, 2018 resolved:

11. That the following actions be taken with respect to the 1st Report of the Accessibility Advisory Committee (ACCAC) from its meeting held on January 25, 2018:

- a) the attached Site Plan Checklist BE IMPLEMENTED in the Site Plan Approval Process; it being noted that item 5 on the approved 2017 ACCAC Work Plan is related to the review of Site Plans; it being further noted that the ACCAC heard a verbal delegation from M. Pease, Manager, Development Planning, with respect to this matter;
- b) delegation status at an upcoming Community and Protective Services Committee meeting BE APPROVED, related to the previous resolution with respect to the proposed revised Mayor's New Year's Honour List Award for Accessibility; it being noted that the ACCAC reviewed the submission of the Policy Sub-Committee to the Manager, Licensing and Elections with respect to the Accessible Election Plan; and,
- c) clauses 1 to 4, 6 and 8 to 16, BE RECEIVED (11/4/CPSC)

C. Saunders
City Clerk
/kmm

cc: M. Pease, Manager, Development Planning

Accessibility Advisory Committee 2018 Work Plan

Project/Initiative	Background	Lead/Responsible	Proposed Timeline	Proposed Expenses	Proposed Budget	Relation to London Strategic Plan	Status
Transportation Advisory Committee (TAC) representative	Designated ACCAC rep on TAC	As elected by ACCAC	Ongoing	NIL	NIL	The strategic plan repeatedly references the Transportation Master plan, one of the primary documents used to direct the actions of TAC	
Trails Advisory Group (TAG) Representative	Designated ACCAC rep on TAG	As elected by ACCAC	Ongoing	NIL	NIL	Building a sustainable City 2.A (pg 11)	
Prepare formal recommendations to council based on the feedback gathered during the Accessibility themed open-house(s)/community consultation(s)	ACCAC completed 5 community open houses throughout 2017 workplan.	Education and Awareness Sub-committee	winter/spring 2018	NIL	NIL	Leading in Public Service 1A; 4A; Strengthening Communities 2B; 3A; 5C; 5H Strengthening Communities 3A Note: development of Accessibility plan in conjunction with ACCAC is mandated under AODA legislation	
Long Term Planning	Host a Strategic Planning Session with all ACCAC members to develop Short term (2019 Work Plan) This is mandated under AODA legislation	Chair/Vice-Chair	Fall 2018	Food, Space	200		
Site Plan Reviews	(See Site Plan Process best practice Initiative)	Chair/Vice-Chair	Ongoing	NIL	NIL	This is mandated under AODA legislation	
Continue to advocate for use and expansion of FADS document	ACCAC has identified several areas where the FADS document could be expanded or strengthened. Ideally the municipality would expand FADS to include these areas, including but not limited to: community gardens, playgrounds, trails, parks, etc.	Policy and Bylaw Subcommittee	Ongoing	NIL	NIL	Strengthening our Community 4C; 5H Building a Sustainable City 2A, 4D	
Review/revise best practices/accessibility guidelines and considerations for Site plan review process (developed by ACCAC in 2016) based on staff feedback	Site Plan review is mandated responsibility of ACCAC since the ODA (2001) Changes to AODA, Ontario Building Code and FADS have ensured most accessibility requirements are now met. Legislation still has some gaps or variances (e.g. applicable to different parties) Best practices/accessibility guidelines and considerations may include a review checklist or information document available/distributed with building or renovation permit requests City staff are using the checklist and are set to return to ACCAC for discussion and follow-up.	Education and Awareness subcommittee	Dependent on staff timelines - estimated Spring/Summer 2018	NIL	NIL	Leading in Public Service 5A	

Consult/Advise members of the public/external; parties upon requests or referral from city staff	Historically ACCAC has received, often through City staff or accessibility@london.ca, requests to advise builders, architects, businesses, and citizens (amongst many other groups) on aspects of accessibility ACCAC has historically partaken in outreach varying from hosting full day conferences, to Lunch 'N' Learns, to exhibiting at community events (e.g. Car-free Sundays)	Variable sub-committees or ACCAC Chair/Vice Chair; as appropriate	Ongoing	NIL	Nil	Strengthening our Community 1A; 5B; 5C; 5H
Undertake Community Outreach to raise Awareness of ACCAC and its role within the city; Promote resources developed by ACCAC to Londoners	Opportunities will focus primarily on exhibiting at events, and may include King's College Social Work Week, Dundas Street Festival, etc.	Education and Awareness Sub-committee	Ongoing	registration costs, ACCAC materials	>\$100 per session; not to exceed \$1000 annually	Leading in Public Service 1A; Strengthening Communities 2B; 3A;
Access2 expansion	Several years ago the City of London became the first municipality in Canada to accept the Access2 Card (Easter Seals program) at all municipal venues. During that expansion London also went from 3 to 48 venues accepting the card. Many new venues/programs now exist and could be approached. During 2017 ACCAC began this process by developing a list of potential sites/venues.	Education and Awareness Sub-committee	Ongoing throughout 2018	NIL	NIL	Strengthening our Community 2B, 2C, 3A
Review Deaf/Blind child at play sign policies	ACCAC members have noted many of these signs have been placed in the same location for decades. This has raised questions about the program	Policy Subcommittee	winter-spring 2018	NIL	NIL	Strengthening our Community 5B
Investigate/discuss benefits/impact of making ACCAC brochures/materials in American Sign Language	During revision of ACCAC materials in 2016, some members questioned whether we were reaching all Londoners who may benefit from the information in our materials and encouraged we explore alternate languages. In 2017 it was determined alternate language was not recommended, however the need to reproduce content in ASL	Education and awareness subcommittee	Summer/Fall 2018	translation costs	2000	Strengthening our Community 2A
City wide meeting accessibility protocols and procedure	A 2016 ACCAC meeting did not have an access team for a member require it. Was informed there was no policy or procedure for proceeding/cancellations in such circumstances. Initial meetings were held with city staff and some recommendations were already made in 2017, however more formal protocols should be developed	Policy Subcommittee	Fall 2018	NIL	NIL	Strengthening our Community 2C
Investigate and make recommendation to City on accessibility in 'non-traditional' parks (e.g. community gardens, dog parks, urban agriculture); this may or may not overlap with FADS expansion also included in this plan	ACCAC members have noted many opportunities for enhanced accessibility at outdoor municipal venues/parks. Have worked with Trails, community gardens to date.	Built Environment Sub-Committee	Spring - Fall 2018	NIL	NIL	Strengthening our Community 4C; 5H Building a Sustainable City 2A, 4D

Engage in discussions around Paratransit and what role, if any, the city could/should undertake in improving the service, noting it is an LTC service, not that of the city directly	Paratransit system is significantly overburdened and very cumbersome for users (requiring prebooking 3 days prior, often taking numerous calls to get through, booking times sometimes hours earlier than desired). Many requests go unfilled	Policy Subcommittee	Spring-Fall 2018	potential meeting/consultation sessions, food, space	1200	Strengthening our Community 5H
Participate in the development and review of the 2018-2021 Accessibility Plan	mandated responsibility of ACCAC under the AODA	Policy Subcommittee, final draft to be brought to full committee	Per staff timeline	NIL	Nil	Accessibility Action Plan 2013-2017
Develop and maintain AODA policies, procedures, practices, particularly for the new Integrated Standard.	Included in the current 2013-2017 Accessibility Plan	Policy Subcommittee	Ongoing	NIL	Nil	Accessibility Action Plan 2013-2017
Review City Budget with an accessibility lens.	Included in the current 2013-2017 Accessibility Plan	Chair/Vice-Chair	During budget season	NIL	Nil	Accessibility Action Plan 2013-2017
Annually nominate a candidate for the Mayor's New Year's Honor List under the Persons with Disabilities category. Continue to develop and distribute pamphlets to inform the public about issues related to persons with disabilities.	Included in the current 2013-2017 Accessibility Plan	Chair/Vice-Chair	Fall 2018	NIL	Nil	Accessibility Action Plan 2013-2017
Review resource historic documents produced by ACCAC, currently posted on london.ca	Included in the current 2013-2017 Accessibility Plan ACCAC completed review of 2 existing documents in 2017 (Outdoor events, financial resources) and felt review of remaining documents was prudent	Education and Awareness Subcommittee	Ongoing	printing	\$1,200	Accessibility Action Plan 2013-2017
		Awareness Subcommittee	Fall 2018	NIL	NIL	Leading in Public Service 1B; 1C Strengthening our Community 3A
Produce an 'Awareness Calendar' highlighting awareness days, weeks, months related to Accessibility and disability	This used to be done monthly but was only shared amongst ACCAC. To promote Accessibility and awareness it was felt a broadening of this approach would benefit the community. ACCAC endeavors to create the calendars and engage city staff on including it, merging it with other cultural/awareness calendars currently used/posted by the city	Education and Awareness Subcommittee	Spring/Summer 2018	NIL	NIL	
Advise council on manner to better acknowledge and reflect important awareness dates, including International Day for Persons with a Disability (Dec 3)	Similar to the Awareness calendar, acknowledging key dates of importance will elevate the awareness of Accessibility and our community.	Education and Awareness Subcommittee	Fall 2018	NIL	NIL	

Investigate alternative participation at meetings and sub-committee meetings to increase participation	Under the previous council a survey was sent out regarding Advisory Committee interest in remote access to committee meetings. No further announcement was made after feedback was provided. ACCAC historically experiences Quorum issues, in part due to members missing meetings for the very reason they were appointed (e.g. their disability makes attendance impossible, unable to coordinate Paratransit, etc)	Policy Sub-Committee	Spring/Summer 2018	NIL	NIL
				Total	not to exceed \$6000 (ACCAC's historically approved Annual budget)

DEFERRED MATTERS

ACCESSIBILITY ADVISORY COMMITTEE

as of March 2018

File No.	Subject	Request Date	Requested/Expected Reply Date	Person Responsible	Status
1.	<u>Site Plan Checklist Update in June</u>				
2.	<u>Outdoor Event Guide</u>				
3.	<u>Mayor's New Years Honour's List Name Change</u>				Will be scheduled to speak at the April 4, 2018 CPSC meeting
4.	<u>Community Gardens</u>				Will be scheduled to speak at the April 4, 2018 CPSC meeting
5.	<u>Open Houses Action Items</u>				